

RECEIVED BY

DD

SUBMIT IN TRIPPLICATE

(Other instructions on reverse side)

Form approved.  
Budget Bureau No. 42-R1425.UNITED STATES  
DEPARTMENT OF THE INTERIOR  
GEOLOGICAL SURVEY

## APPLICATION FOR PERMIT TO DRILL, DEEPEN, OR PLUG BACK

1a. TYPE OF WORK  
DRILL ☒ DEEPEN ☐ PLUG BACK ☐

b. TYPE OF WELL  
OIL WELL ☐ GAS WELL ☒ OTHER ☐ SINGLE ZONE ☐ MULTIPLE ☐

2. NAME OF OPERATOR  
Yates Petroleum Corporation

3. ADDRESS OF OPERATOR  
207 South Fourth Street - Artesia, NM 88210

4. LOCATION OF WELL (Report location clearly and in accordance with any State requirements.)  
At surface 660' FNL & 660' FWL  
At proposed prod. zone Same

14. DISTANCE IN MILES AND DIRECTION FROM NEAREST TOWN OR POST OFFICE\*  
Approximately 26 miles northeast of Roswell, New Mexico

15. DISTANCE FROM PROPOSED\* LOCATION TO NEAREST PROPERTY OR LEASE LINE, FT. (Also to nearest drlg. unit line, if any) 660

16. NO. OF ACRES IN LEASE 2520

17. NO. OF ACRES ASSIGNED TO THIS WELL 160

18. DISTANCE FROM PROPOSED LOCATION\* TO NEAREST WELL, DRILLING, COMPLETED, OR APPLIED FOR, ON THIS LEASE, FT. 4350'

19. PROPOSED DEPTH 4350'

20. ROTARY OR CABLE TOOLS Rotary

21. ELEVATIONS (Show whether DF, RT, GR, etc.) 3691.1' GR

22. APPROX. DATE WORK WILL START\* ASAP

23. PROPOSED CASING AND CEMENTING PROGRAM

SIZE OF HOLE	SIZE OF CASING	WEIGHT PER FOOT	SETTING DEPTH	QUANTITY OF CEMENT
14-3/4"	10-3/4"	40.5# J-55	925'	750 sacks - circulate
7-7/8"	4-1/2"	9.5#	TD	350 sacks

We propose to drill and test the Abo and intermediate formations. Approximately 925' of surface casing will be set and cement circulated to shut off gravel and cavings. If needed for lost circulation, 7" intermediate casing will be run to 1500' and cemented with enough cement calculated to tie back into the surface casing. If commercial, production casing will be run and cemented with adequate cover, perforated and stimulated as needed for production.

MUD PROGRAM: FW gel/LCM to 925'; brine to 3200'; brine/KCL water to TD

BOP PROGRAM: BOP's will be installed at the offset and tested daily.

*Gas not dedicated*

IN ABOVE SPACE DESCRIBE PROPOSED PROGRAM: If proposal is to deepen or plug back, give data on present productive zone and proposed new productive zone. If proposal is to drill or deepen directionally, give pertinent data on subsurface locations and measured and true vertical depths. Give blowout preventer program, if any.

24.

SIGNED

*Clifton May*

TITLE

Regulatory Agent

DATE

June 21, 1985

(This space for Federal or State office use)

PERMIT NO.

APPROVAL DATE

APPROVED BY

S/Phil Kirk

TITLE

Area Manager

DATE

7-10-85

CONDITIONS OF APPROVAL, IF ANY:

**NEW MEXICO OIL CONSERVATION COMMISSION  
WELL LOCATION AND ACREAGE DEDICATION PLAT**

Form C-102  
Supersedes C-128  
Effective 1-1-65

All distances must be from the outer boundaries of the Section.

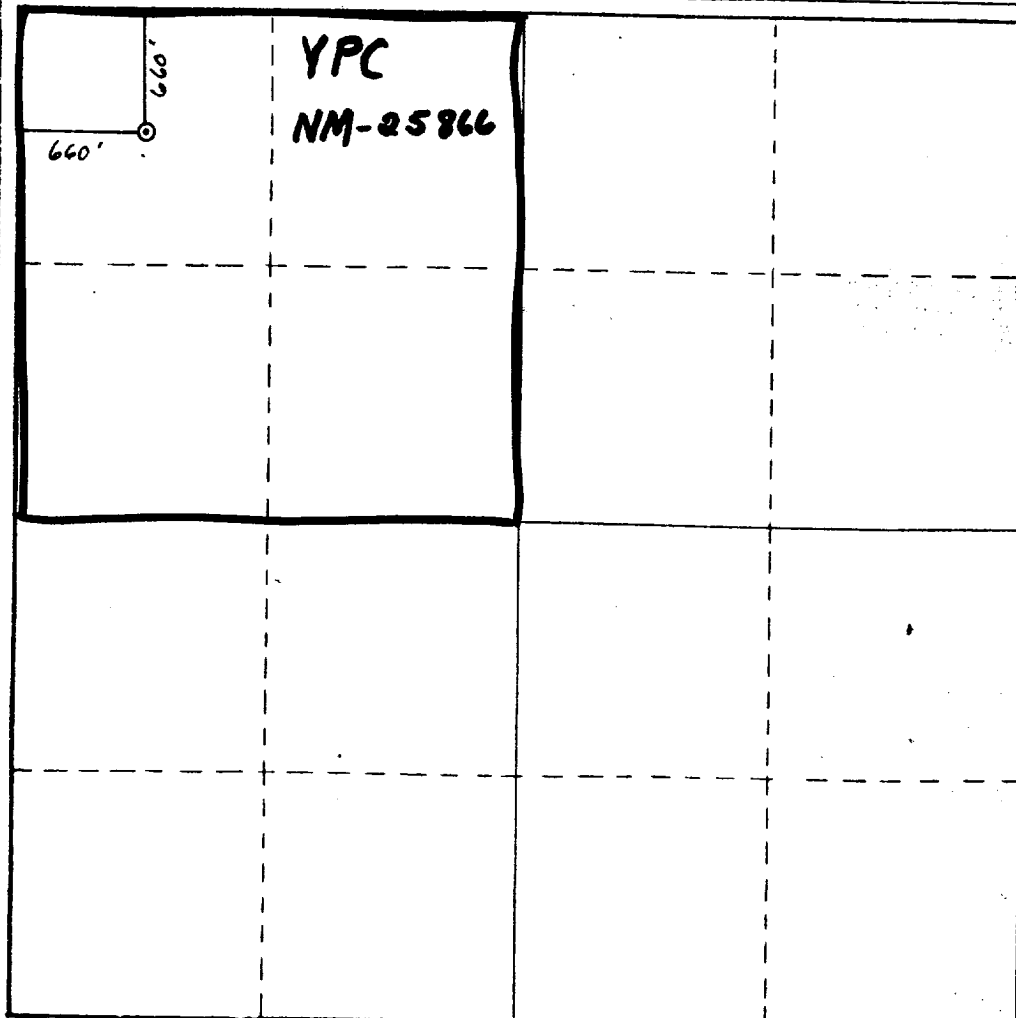
Operator <b>Yates Petroleum Corporation</b>			Lease <b>Buder "ACN" Federal</b>		Well No. <b>1</b>
Unit Letter <b>D</b>	Section <b>22</b>	Township <b>6S</b>	Range <b>26E</b>	County <b>Chaves</b>	
Actual Footage Location of Well: <div style="display: flex; justify-content: space-between;"> <span>660 feet from the North line and</span> <span>660 feet from the West line</span> </div>					
Ground Level Elev. <b>3691.1' GR</b>	Producing Formation <b>Abo</b>	Pool <b>UNDERS PECOS SLURP Abo</b>	Dedicated Acreage: <b>160</b> Acres		

1. Outline the acreage dedicated to the subject well by colored pencil or hachure marks on the plat below.
2. If more than one lease is dedicated to the well, outline each and identify the ownership thereof (both as to working interest and royalty).
3. If more than one lease of different ownership is dedicated to the well, have the interests of all owners been consolidated by communitization, unitization, force-pooling, etc?

☐ Yes   ☐ No   If answer is "yes," type of consolidation \_\_\_\_\_

If answer is "no," list the owners and tract descriptions which have actually been consolidated. (Use reverse side of this form if necessary.) \_\_\_\_\_

No allowable will be assigned to the well until all interests have been consolidated (by communitization, unitization, forced-pooling, or otherwise) or until a non-standard unit, eliminating such interests, has been approved by the Commission.



**CERTIFICATION**

I hereby certify that the information contained herein is true and complete to the best of my knowledge and belief.

*Clifton May*

Name  
**Clifton May**

Position  
**Regulatory Agent**

Company  
**Yates Petroleum Corporation**

Date  
**May 13, 1985**

**HERSCHEL L. JONES**

I hereby certify that the well location shown on this plat was plotted from field notes of actual surveys made by me or under my supervision, and that the same is true and correct to the best of my knowledge and belief.

**May 13, 1985**

Date Surveyed

Registered Professional Engineer and/or Land Surveyor

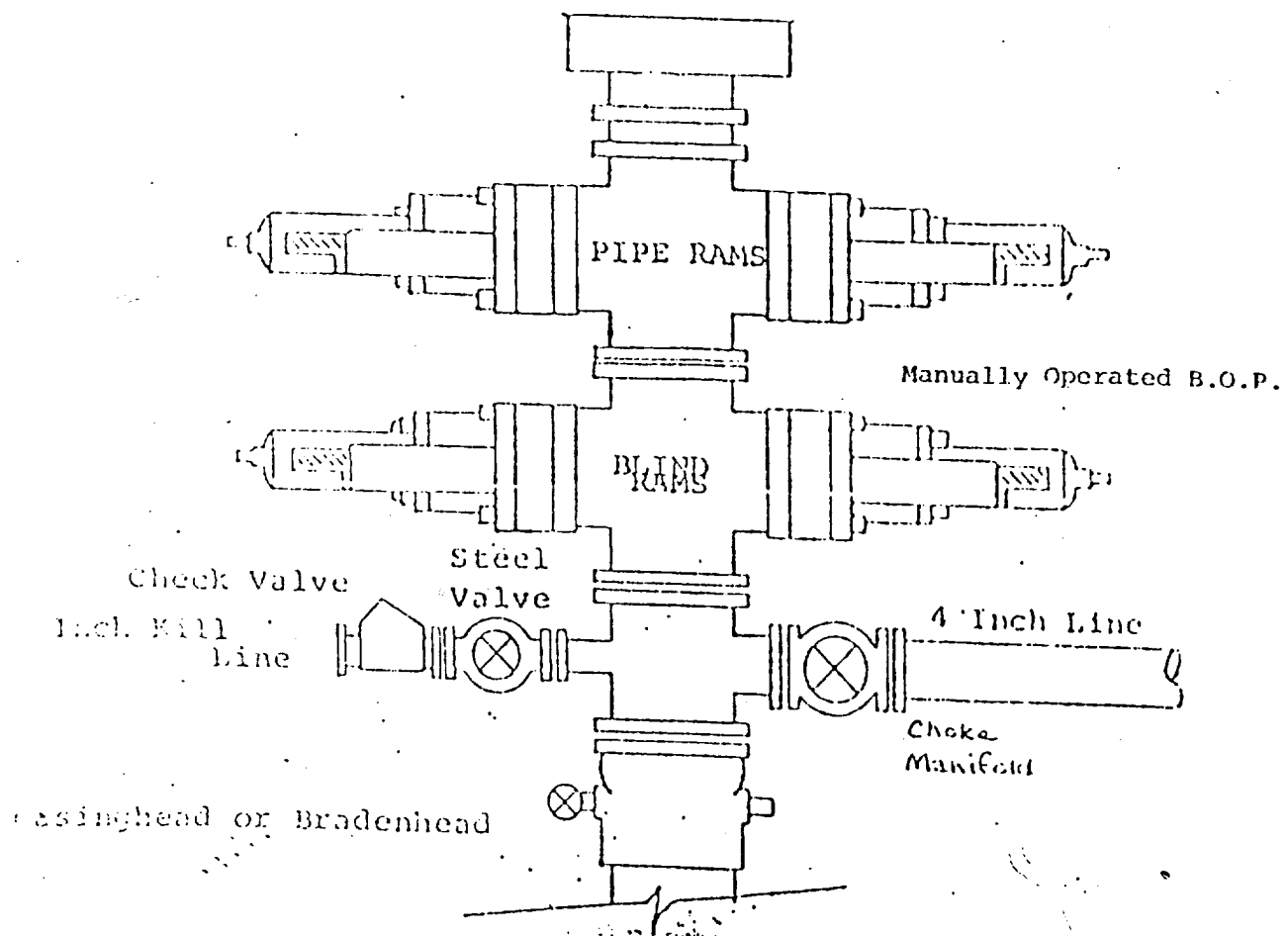
Certificate No.

**3640**

# EXHIBIT B

## BDP DIAGRAM

RATED 3000<sup>#</sup>



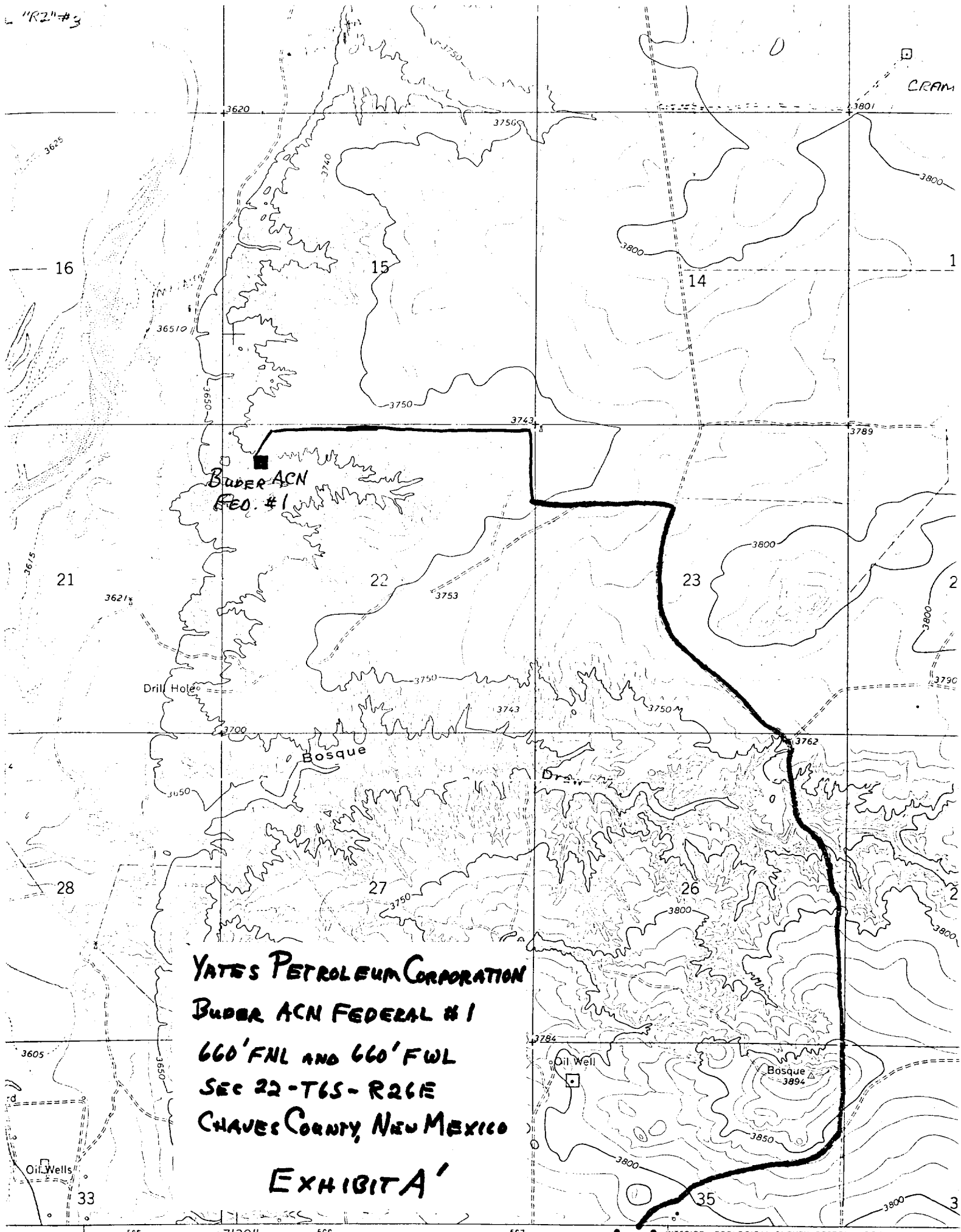
YATES PETROLEUM CORPORATION  
Buder "ACN" Federal #1  
660' FNL and 660' FWL  
Section 22-T6S-R26E  
Chaves County, New Mexico

In conjunction with Form 9-331C, Application for Permit to Drill subject well, Yates Petroleum Company submits the following ten items of pertinent information in accordance with BLM requirements.

1. The geologic surface formation is sandy alluvium.
2. The estimated tops of geologic markers are as follows:

San Andres	650'
Glorieta	1632'
Yeso	1712'
Abo	3878'
TD	4350'
3. The estimated depths at which anticipated water, oil or gas formations are expected to be encountered:  
  
Water: Approximately 250'  
  
Oil or Gas: 3900'
4. Proposed Casing Program: See Form 9-331C.
5. Pressure Control Equipment: See Form 9-331C.
6. Mud Program: See Form 9-331C.
7. Auxiliary Equipment: Kelly Cock; pit level indicators and flow sensor equipment; sub with full-opening valve on floor, drill pipe connection.
8. Testing, Logging and Coring Program:  
  
Samples: Surface casing to TD  
DST's: As warranted  
Coring: None  
Logging: CNL-FDC from TD to casing with GR-CNL on to surface; DLL from TD to casing.
9. No abnormal pressures or temperatures are anticipated.
10. Anticipated starting date: As soon as possible after approval.

"R2" #3

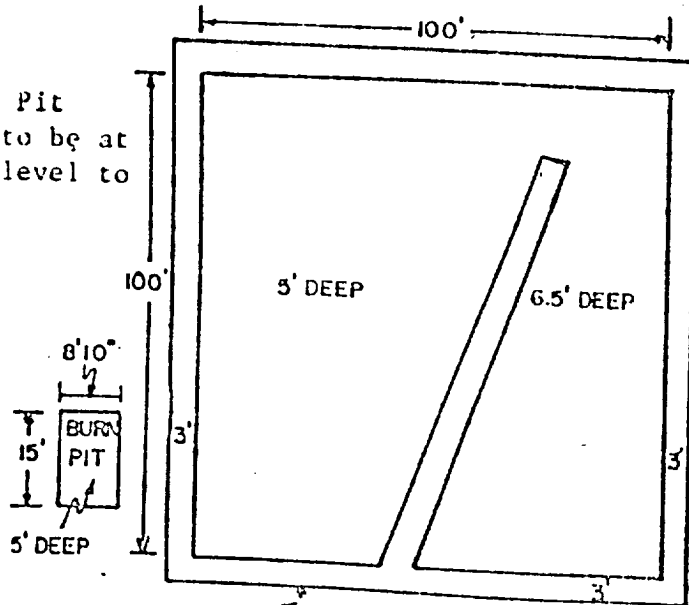


YATES PETROLEUM CORPORATION  
BUDER ACN FEDERAL #1  
660' FNL AND 660' FWL  
SEC 22-T6S-R26E  
CHAVES COUNTY, NEW MEXICO  
EXHIBIT A'

# YATES PETROLEUM CORP.

## Exhibit C

Reserve Pit  
bottom to be at  
ground level to  
1 ft.



NOTE:

Inside walls must be as  
high and wide as outer  
walls of pit.

\* PITS WILL FACE EAST.  
THE OUTSIDE WALLS  
WILL BE AT LEAST 14' WIDE  
AT BOTTOM.

