

MINIMAL REQUIREMENTS FOR CHOKE MANIFOLD

3000 psi W. P.

EXHIBIT "A" Continued

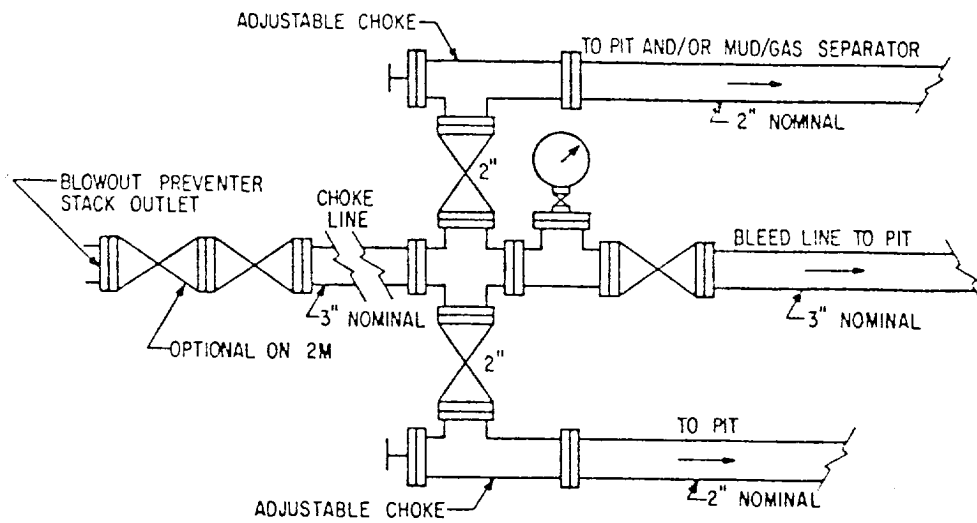


FIG. 3.A.1

TYPICAL CHOKE MANIFOLD ASSEMBLY
FOR 2M AND 3M RATED WORKING
PRESSURE SERVICE - SURFACE INSTALLATION