

NM OIL CONS. COMMISSION UNITED STATES  
Drawer DD DEPARTMENT OF THE INTERIOR  
Artesia, NM 88210  
GEOLOGICAL SURVEY

30-045-62303

5. LEASE DESIGNATION AND SERIAL NO.

NM-36193

6. IF INDIAN, ALLOTTEE OR TRIBE NAME

7. UNIT AGREEMENT NAME

8. FARM OR LEASE NAME

Four Mile Draw Federal

9. WELL NO.

#3

10. FIELD AND POOL OR WILDCAT  
Wildcat11. SEC., T., R., M., OR BLK.  
AND SURVEY OR AREA

Sec. 14-6S-22E

12. COUNTY OR PARISH

Chaves

13. STATE

NM

## APPLICATION FOR PERMIT TO DRILL, DEEPEN, OR PLUG BACK

1a. TYPE OF WORK

DRILL ☒DEEPEN ☐PLUG BACK ☐

b. TYPE OF WELL

OIL  
WELL ☐GAS  
WELL ☒

OTHER

SINGLE  
ZONE ☒MULTIPLE  
ZONE ☐

2. NAME OF OPERATOR

McKay Oil Corporation

3. ADDRESS OF OPERATOR

P.O. Box 2014, Roswell, New Mexico 88202

4. LOCATION OF WELL (Report location clearly and in accordance with any State requirements.)

At surface

660' FWL &amp; 660' FSL

At proposed prod. zone same

RECEIVED BY

NOV 25 1985

O. C. D. ut. m.  
ARTESIA, OFFICE

14. DISTANCE IN MILES AND DIRECTION FROM NEAREST TOWN OR POST OFFICE\*

Approx. 24 miles north of Roswell, New Mexico

15. DISTANCE FROM PROPOSED\*  
LOCATION TO NEAREST  
PROPERTY OR LEASE LINE, FT.  
(Also to nearest drlg. unit line, if any)

660'

16. NO. OF ACRES IN LEASE

2,207.51

17. NO. OF ACRES ASSIGNED  
TO THIS WELL

160

18. DISTANCE FROM PROPOSED LOCATION\*  
TO NEAREST WELL, DRILLING, COMPLETED,  
OR APPLIED FOR, ON THIS LEASE, FT.

1/2 mile

19. PROPOSED DEPTH

3400'

20. ROTARY OR CABLE TOOLS

Rotary

21. ELEVATIONS (Show whether DF, RT, GR, etc.)

4248' GR

22. APPROX. DATE WORK WILL START\*

ASAP

23.

## PROPOSED CASING AND CEMENTING PROGRAM

SIZE OF HOLE	SIZE OF CASING	WEIGHT PER FOOT	SETTING DEPTH	QUANTITY OF CEMENT
12 1/4"	8 5/8"	24.0 J-55	900' ±	850 cf cement circulated
7 7/8"	4 1/2"	10.5 J-55	TD	1200 cf cement including 480 cf to tie in 4 1/2" to 8 5/8" from 1500' to 800'

We propose to drill and test the Abo formation. Approximately 900' of surface casing will be set and cemented to surface. If commercial, 4 1/2" production casing will be run and cemented with adequate cover, perforated and stimulate as needed for production.

MUD PROGRAM: See Supplemental Drilling Data which is attached.

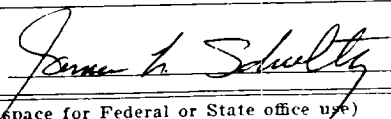
BOP PROGRAM: BOP will be installed on 8 5/8" casing and tested daily.

Gas is not dedicated.

IN ABOVE SPACE DESCRIBE PROPOSED PROGRAM: If proposal is to deepen or plug back, give data on present productive zone and proposed new productive zone. If proposal is to drill or deepen directionally, give pertinent data on subsurface locations and measured and true vertical depths. Give blowout preventer program, if any.

24.

SIGNED



TITLE Landman

DATE 10-29-85

(This space for Federal or State office use)

PERMIT NO.

APPROVAL DATE

APPROVED BY

S/Phil Kirk

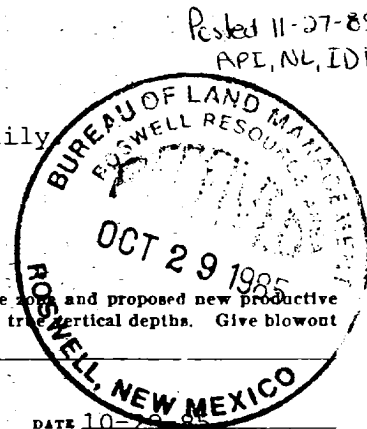
TITLE

Area Manager

DATE

21 NOV 1985

CONDITIONS OF APPROVAL, IF ANY:



STATE OF NEW MEXICO  
ENERGY AND MINERALS DEPARTMENT

OIL CONSERVATION  
P. O. BOX 2088  
SANTA FE, NEW MEXICO 87501

Form C-102  
Revised 10-1-85

All distances must be from the outer boundaries of the Section.

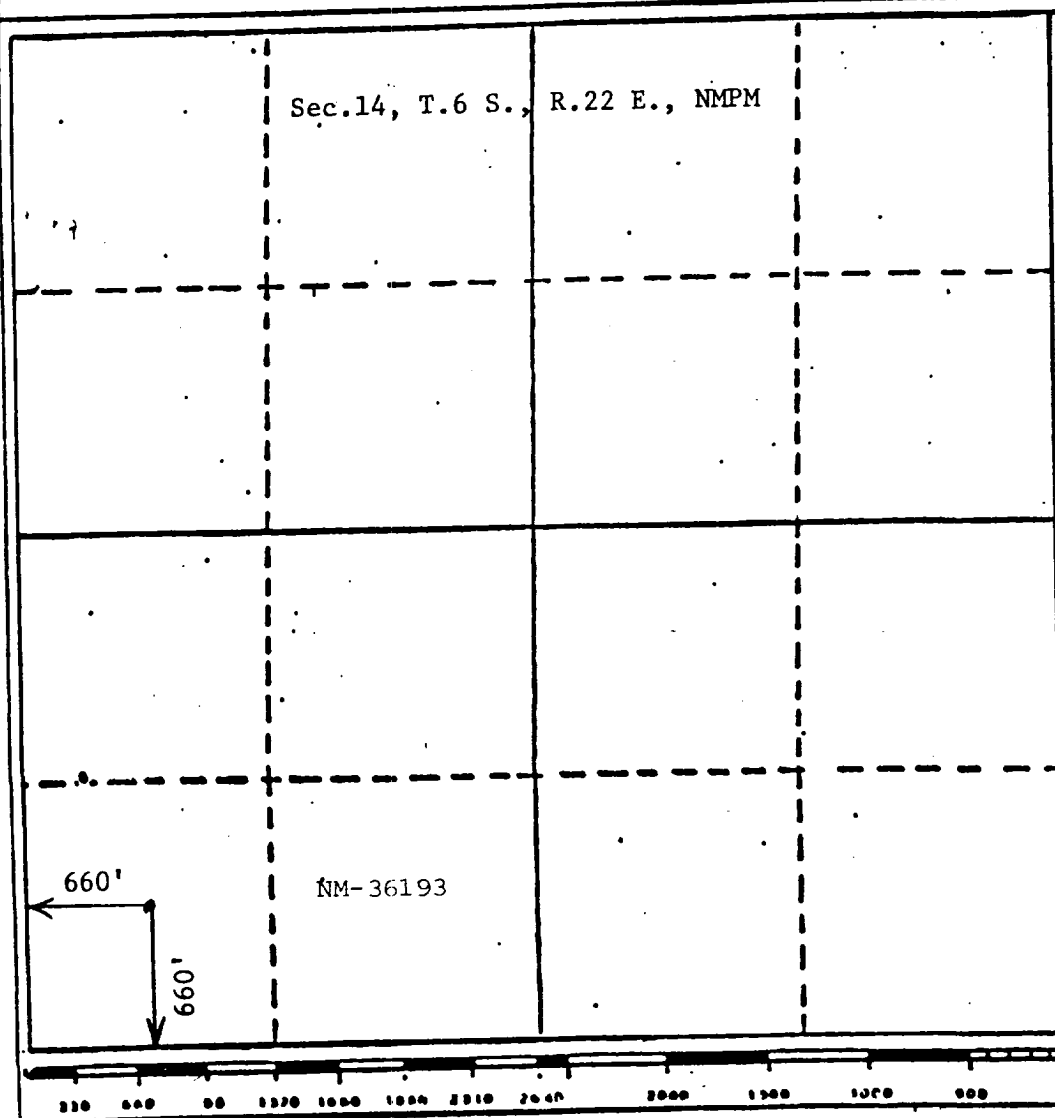
Operator McKay Oil Corp.		Lease Four Mile Draw Federal		Well No. #3
Unit Letter M	Section 14	Township 6 South	Range 22 East	County Chaves
Actual Wellbore Location of Well 660 feet from the South line and 660 feet from the West line				
Ground Level Elev. 4248	Producing Formation Abo	Pool undesignated	Dedicated Acreage 160 Acres	

1. Outline the acreage dedicated to the subject well by colored pencil or hatchure marks on the plot below.
2. If more than one lease is dedicated to the well, outline each and identify the ownership thereof (both as to working interest and royalty).
3. If more than one lease of different ownership is dedicated to the well, have the interests of all owners been consolidated by communitization, unitization, force-pooling, etc?

☐ Yes ☐ No If answer is "yes," type of consolidation \_\_\_\_\_

If answer is "no," list the owners and tract descriptions which have actually been consolidated. (Use reverse side of this form if necessary.) \_\_\_\_\_

No allowable will be assigned to the well until all interests have been consolidated (by communitization, unitization, forced-pooling, or otherwise) or until a non-standard unit, eliminating such interests, has been approved by the Division.



CERTIFICATION

I hereby certify that the information contained herein is true and complete to the best of my knowledge and belief.

*James L. Schultz*  
Name  
James L. Schultz

Position  
Landman

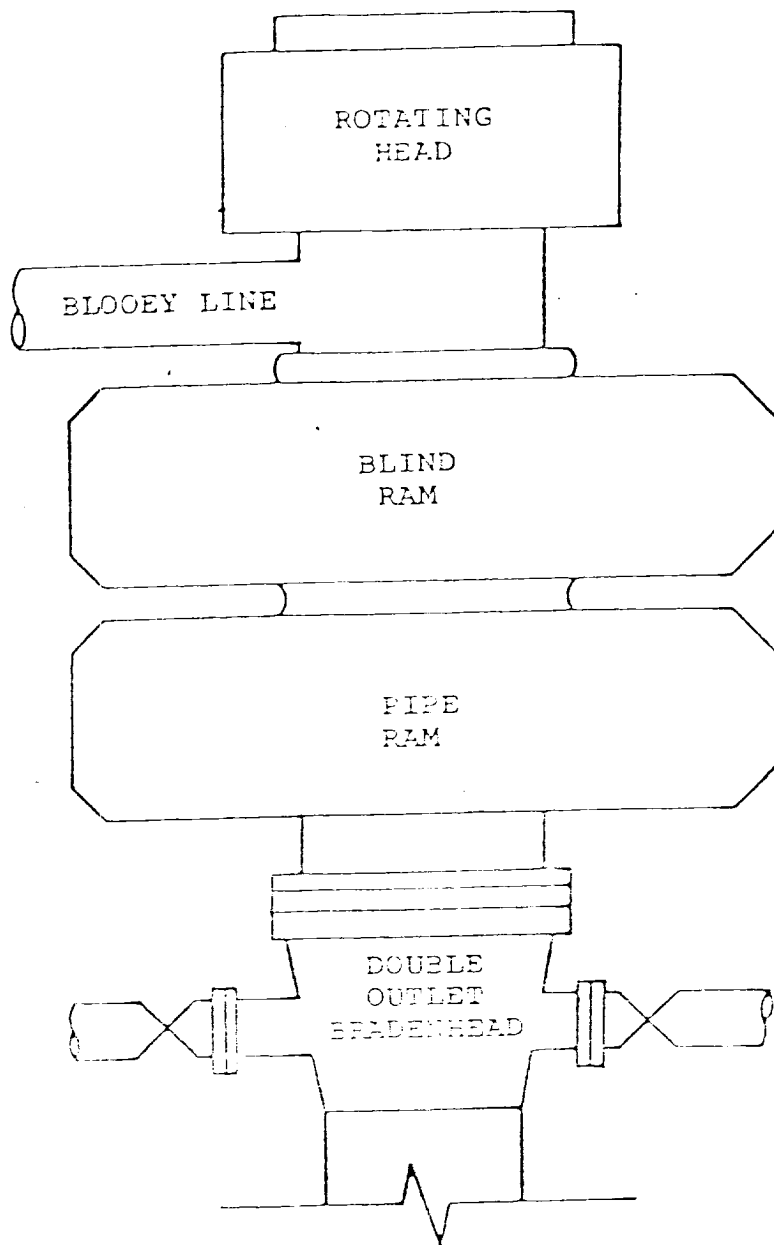
Company  
McKay Oil Corporation

Date  
10-29-85

I hereby certify that the well location shown on this plot was plotted from field notes of actual surveys made by me or under my supervision, and that the same is true and correct to the best of my knowledge and belief.

Date Surveyed  
October 25, 1985  
Registered Professional Engineer and/or Land Surveyor  
*John D. [Signature]*  
John D. [Signature] E. & L.  
Certification No. 6890 PROFESSIONAL ENGINEER

MCKAY OIL CORPORATION  
Four Mile Draw Federal #3  
SW $\frac{1}{4}$ SW $\frac{1}{4}$  Sec. 14-6S-22E  
Chaves County, New Mexico



BOP STACK

3000 PSI WORKING PRESSURE

## SUPPLEMENTAL DRILLING DATA

McKAY OIL CORPORATION  
Four Mile Draw Federal #3  
SW1/4SW1/4 Sec.14-6S-22E  
Chaves County, N.M.

NM 36193

The following items supplement Form 9-331C in accordance with instructions contained in NTL-6.

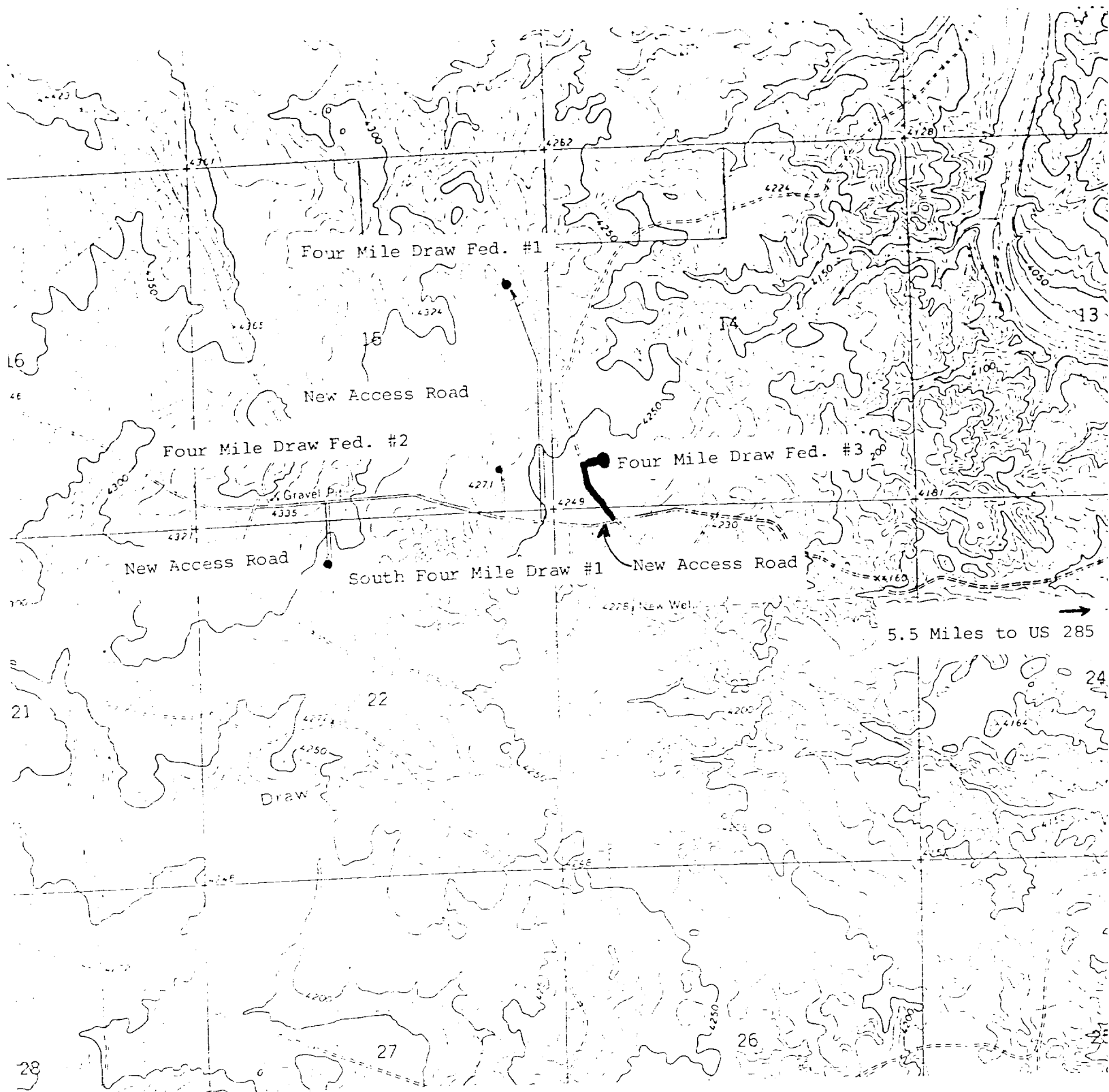
1. SURFACE FORMATION: San Andres
2. ESTIMATED TOPS OF GEOLOGIC MARKERS:

Yeso	- 799'
Tubb	- 2329'
Abo	- 3009'
3. ESTIMATED DEPTHS TO WATER, OIL OR GAS FORMATION:

Fresh water	- In surface formations above 748'
Gas	- In Abo formation below 3009'
4. PROPOSED CASING PROGRAM: See Form 9-331C
5. PRESSURE CONTROL EQUIPMENT: Blowout preventer stack will consist of at least a double-ram blowout preventer rated to 3000#WP. A sketch of the BOP is attached.
6. CIRCULATING MEDIUM:

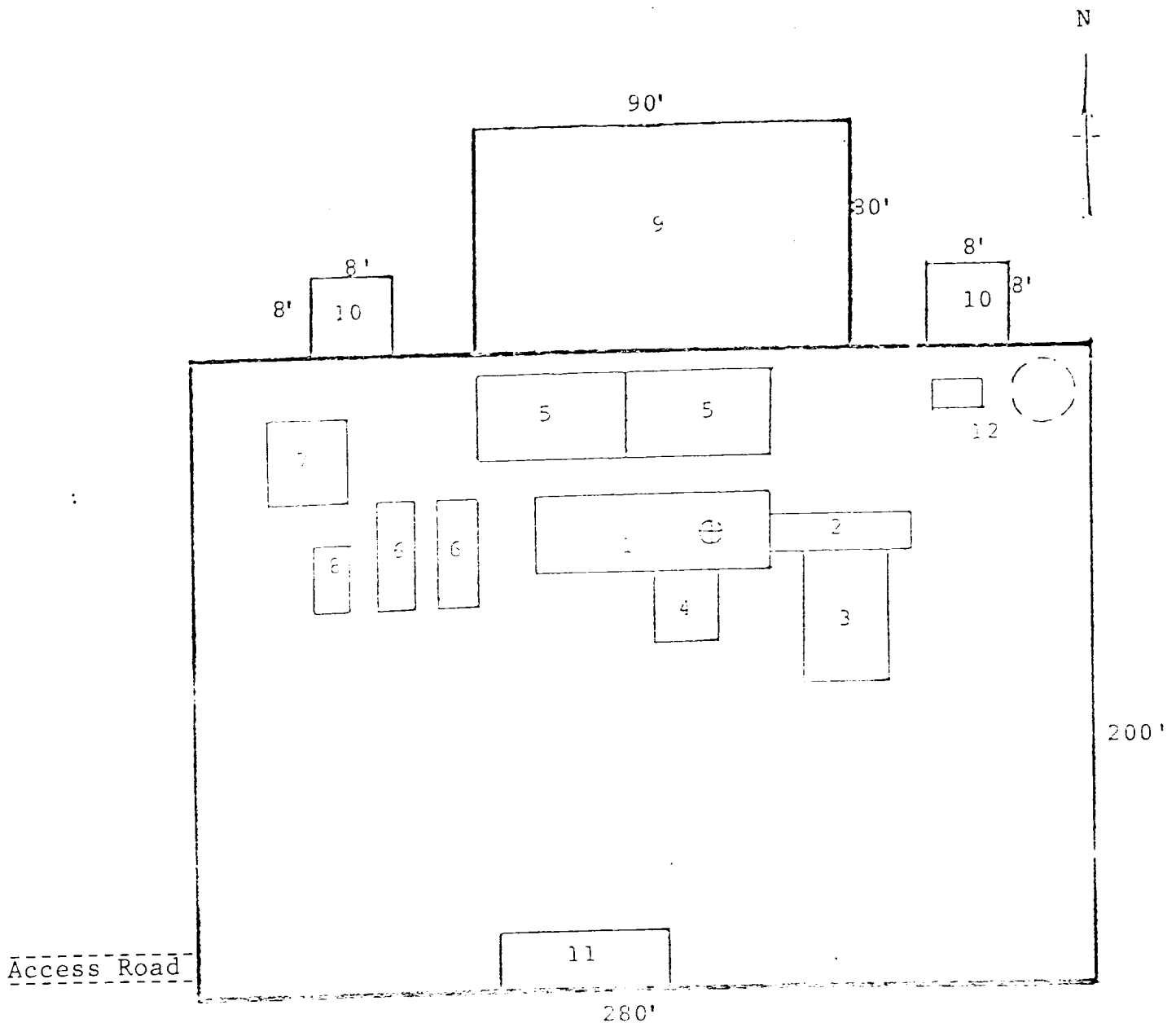
0'- 799'	Lime and gel, spud mud, viscosity 32 to 34 seconds.
799'- 2948'	Fresh water
2948'- TD	Start mudding up at 3300'; viscosity 36 to 38 seconds; water loss 10 cc or less; 3-5% Diesel; 2 KCL

Mud additives will be used to control water loss.
7. AUXILIARY EQUIPMENT: full-opening kelly cock, to fit the drill string in use, will be kept on the rig floor at all times.



MCKAY OIL CORPORATION  
Four Mile Draw Federal #3  
SW1/4SW1/4 Sec. 14-6S-22E  
Chaves County, New Mexico

MCKAY OIL CORPORATION  
 Four Mile Draw Federal #3  
 SW1/4SW1/4 Sec. 14-6S-22E  
 Chaves County, New Mexico



RIG LAYOUT

- |                 |                           |
|-----------------|---------------------------|
| 1. Substructure | 7. Water Tank             |
| 2. Catwalk      | 8. Light Plant            |
| 3. Pipe Rack    | 9. Reserve Pit            |
| 4. Doghouse     | 10. Trash Pit             |
| 5. Mud Pits     | 11. Trailer House         |
| 6. Mud Pumps    | 12. Production Facilities |