

36-005-62304

5. LEASE DESIGNATION AND SERIAL NO.

NM-36195

6. IF INDIAN, ALLOTTEE OR TRIBE NAME

7. UNIT AGREEMENT NAME

8. FARM OR LEASE NAME

Remmele Federal

9. WELL NO.

#2

10. FIELD AND POOL, OR WILDCAT
W. Field Abo Gas
Wildcat11. SEC., T., R., M., OR BLK.
AND SURVEY OR AREA

Sec. 25-6S-22E

12. COUNTY OR PARISH

Chaves

13. STATE

NM

1a. TYPE OF WORK

DRILL ☒DEEPEN ☐PLUG BACK ☐

b. TYPE OF WELL

OIL
WELL ☐GAS
WELL ☒

OTHER

SINGLE
ZONE ☒MULTIPLE
ZONE ☐

2. NAME OF OPERATOR

McKay Oil Corporation

3. ADDRESS OF OPERATOR

P.O. Box 2014, Roswell, New Mexico 88202

4. LOCATION OF WELL (Report location clearly and in accordance with any State requirements.)

At surface

660' FSL & 1980' FEL

At proposed prod. zone same

14. DISTANCE IN MILES AND DIRECTION FROM NEAREST TOWN OR POST OFFICE*

Approx. 21 miles north of Roswell, New Mexico

15. DISTANCE FROM PROPOSED*

LOCATION TO NEAREST

PROPERTY OR LEASE LINE, FT.

(Also to nearest drlg. unit line, if any)

660'

18. DISTANCE FROM PROPOSED LOCATION*

TO NEAREST WELL, DRILLING, COMPLETED,

OR APPLIED FOR, ON THIS LEASE, FT.

3 miles

16. NO. OF ACRES IN LEASE

2,560.00

19. PROPOSED DEPTH

3400'

17. NO. OF ACRES ASSIGNED
TO THIS WELL

160

20. ROTARY OR CABLE TOOLS

Rotary

21. ELEVATIONS (Show whether DF, RT, GR, etc.)

4169' GR

22. APPROX. DATE WORK WILL START*

ASAP

23.

PROPOSED CASING AND CEMENTING PROGRAM

SIZE OF HOLE	SIZE OF CASING	WEIGHT PER FOOT	SETTING DEPTH	QUANTITY OF CEMENT
12 1/2"	8 5/8"	24.0 J-55	900' ±	850 cf cement circulated
7 7/8"	4 1/2"	10.5 J-55	TD	1200 cf cement including
				480 cf to tie in 4 1/2" to
				8 5/8" from 1500' to 800'

We propose to drill and test the Abo formation. Approximately 900' of surface casing will be set and cemented to surface. If commercial, 4 1/2" production casing will be run and cemented with adequate cover, perforated and stimulate as needed for production.

MUD PROGRAM: See Supplemental Drilling Data which is attached.

BOP PROGRAM: BOP will be installed on 8 5/8" casing and tested daily.

Gas is not dedicated.

IN ABOVE SPACE DESCRIBE PROPOSED PROGRAM: If proposal is to deepen or plug back, give data on present productive zone and proposed new productive zone. If proposal is to drill or deepen directionally, give pertinent data on subsurface locations and measured and true vertical depths. Give blowout preventer program, if any.

24.

SIGNED

TITLE Landman

DATE 10-29-85

(This space for Federal or State office use)

PERMIT NO.

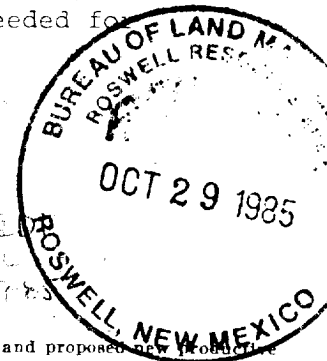
APPROVAL DATE

APPROVED BY

TITLE

DATE 20 NOV 1985

CONDITIONS OF APPROVAL, IF ANY:



All distances must be from the outer boundaries of the Section.

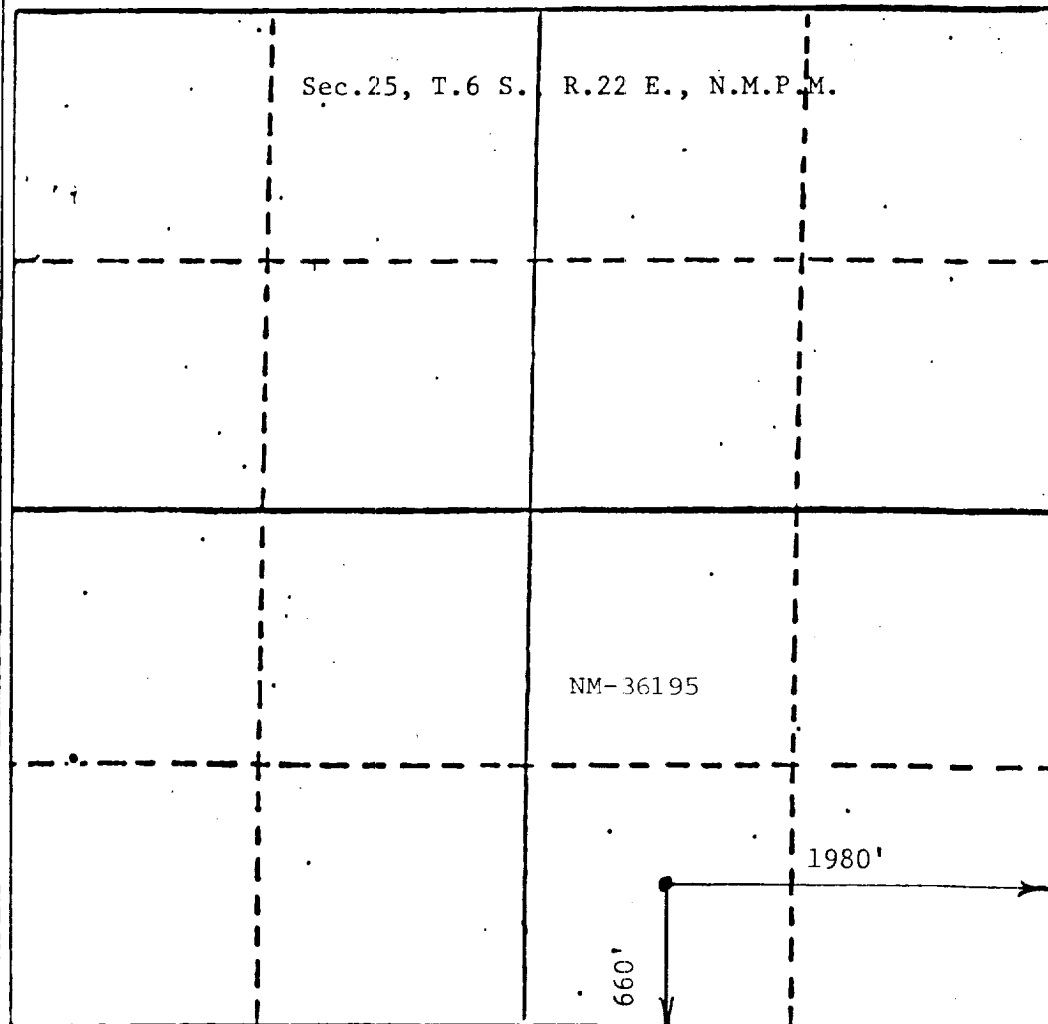
Operator McKay Oil Corp.			Lease Remmele Federal		Well No. #2
Unit Letter 0	Section 25	Township 6 South	Range 22 East	County Chaves	
Actual Wellbore Location of Well					
660		feet from the	South	line and	1980
				feet from the	East
Ground Level Elev. 4169		Producing Formation Abo		Paul W. Pecos Slope also has undesignated	
				Dedicated Acreage 160	Acres

1. Outline the acreage dedicated to the subject well by colored pencil or hachure marks on the plat below.
2. If more than one lease is dedicated to the well, outline each and identify the ownership thereof (both as to working interest and royalty).
3. If more than one lease of different ownership is dedicated to the well, have the interests of all owners been consolidated by communitization, unitization, force-pooling, etc?

☐ Yes ☐ No If answer is "yes," type of consolidation _____

If answer is "no," list the owners and tract descriptions which have actually been consolidated. (Use reverse side of this form if necessary.) _____

No allowable will be assigned to the well until all interests have been consolidated (by communitization, unitization, forced-pooling, or otherwise) or until a non-standard unit, eliminating such interests, has been approved by the Division



CERTIFICATION

I hereby certify that the information contained herein is true and complete to the best of my knowledge and belief.

James L. Schultz
Name
James L. Schultz

Position
Landman

Company
McKay Oil Corporation

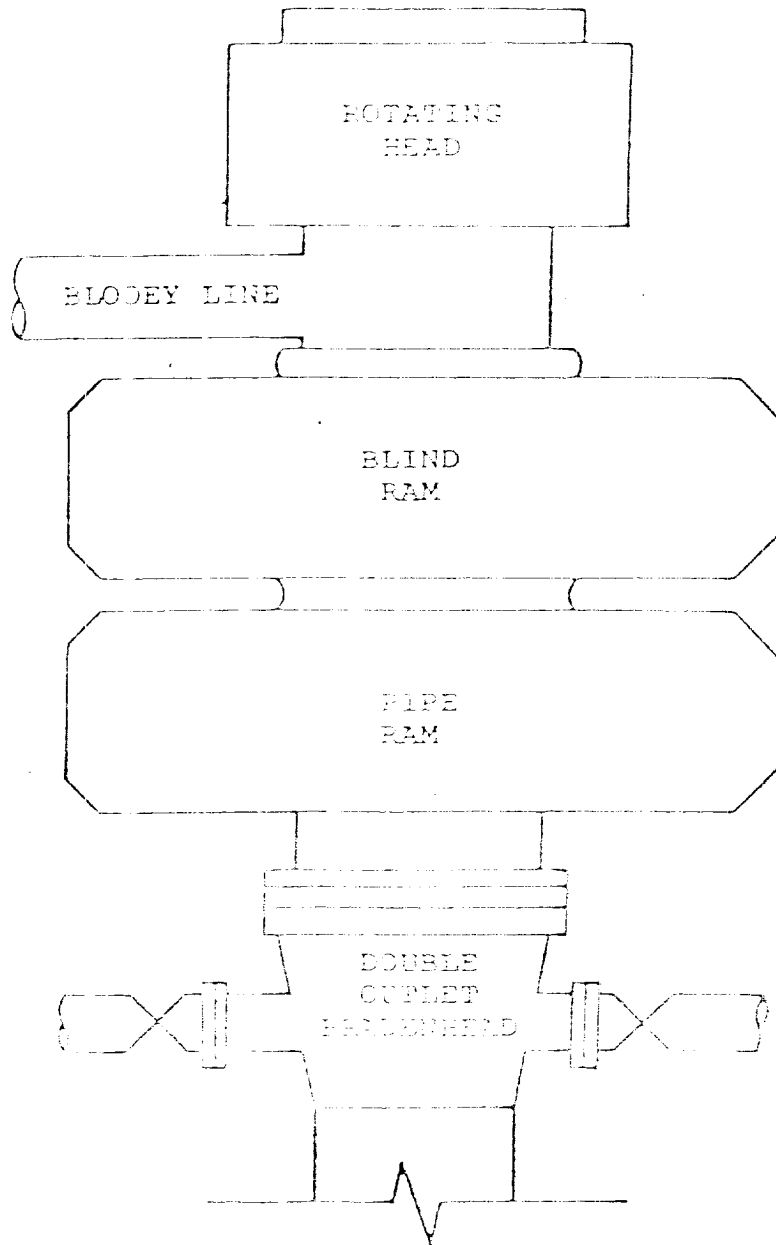
Date
10-29-85

I hereby certify that the well location shown on this plat was plotted from field notes of actual surveys made by me or under my supervision, and that the same is true and correct to the best of my knowledge and belief.

Date Surveyed
October 25, 1985
Surveyed by
JOHN D. JACOB
Professional Engineer
and/or Land Surveyor
6280
JOHN D. JACOB
Professional Engineer
6280

330 660 990 1320 1650 1980 2310 2640 2970 3300 3630 3960 4290 4620 4950 5280 5610 5940 6270 6600

MCKAY OIL CORPORATION
Remmele Federal #2
SW1/4SE1/4 Sec. 25-6S-22E
Chaves County, New Mexico



POP STACK

3000 PSI WORKING PRESSURE

SUPPLEMENTAL DRILLING DATA

McKAY OIL CORPORATION
Remmele Federal #2
SW1/4SE1/4 Sec.25-6S-22E
Chaves County, N.M.

NM 36195

The following items supplement Form 9-331C in accordance with instructions contained in NTL-6.

1. SURFACE FORMATION: San Andres
2. ESTIMATED TOPS OF GEOLOGIC MARKERS:

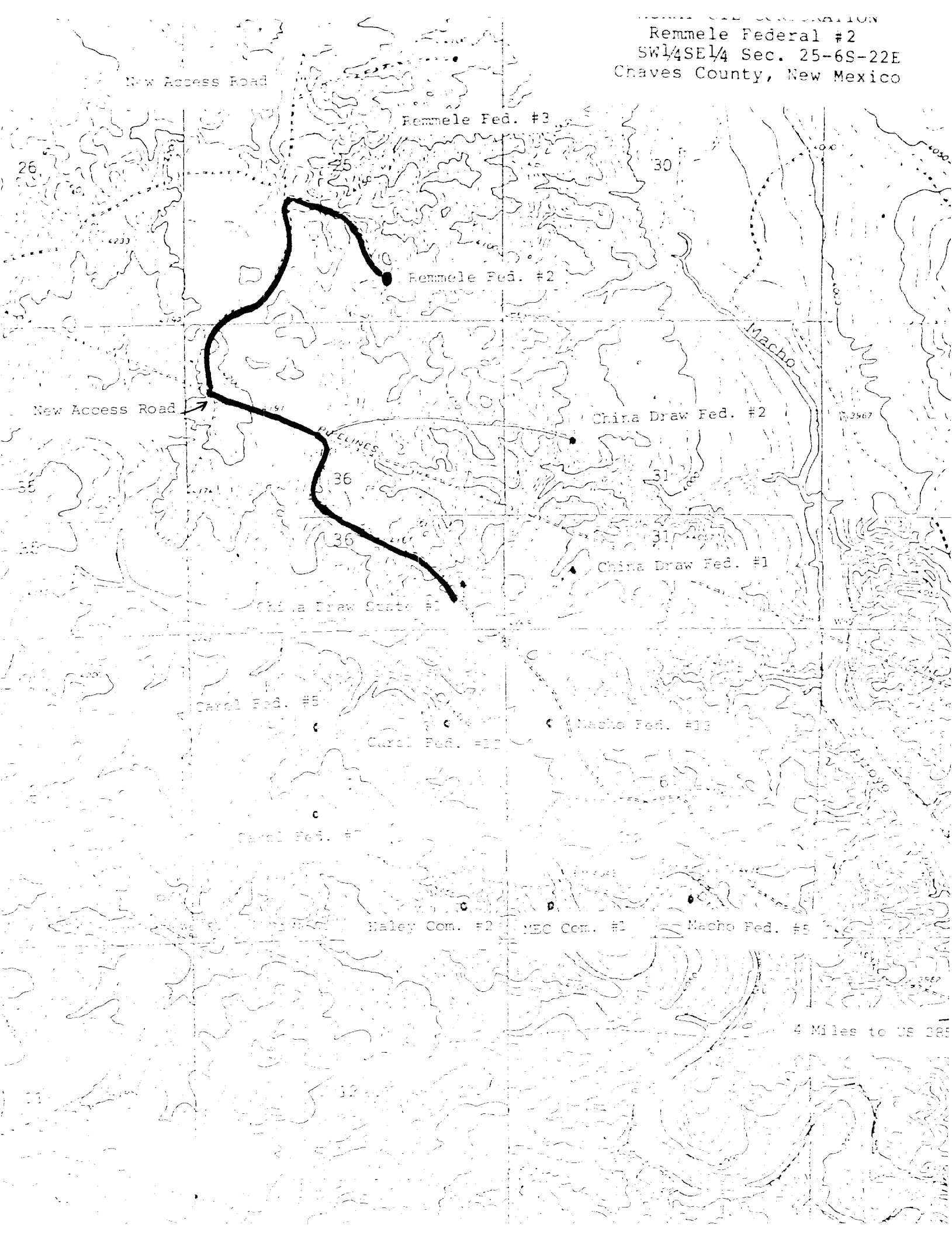
Yeso	- 710'
Tubb	- 2250'
Abo	- 2930'
3. ESTIMATED DEPTHS TO WATER, OIL OR GAS FORMATION:

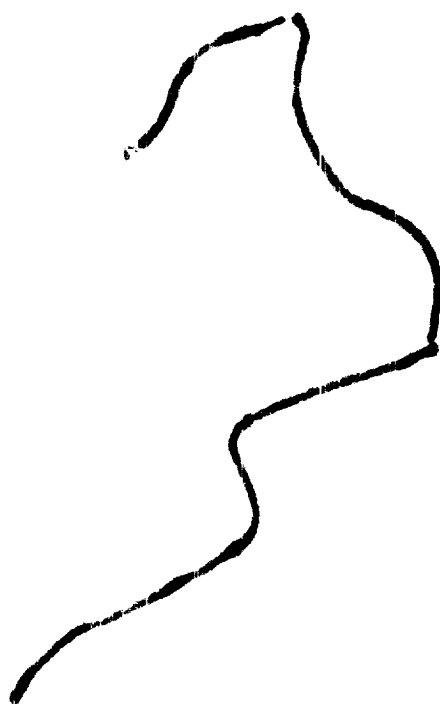
Fresh water	- In surface formations above 669'
Gas	- In Abo formation below 2930'
4. PROPOSED CASING PROGRAM: See Form 9-331C
5. PRESSURE CONTROL EQUIPMENT: Blowout preventer stack will consist of at least a double-ram blowout preventer rated to 3000#WP. A sketch of the BOP is attached.
6. CIRCULATING MEDIUM:

0'- 669'	Lime and gel, spud mud, viscosity 32 to 34 seconds.
669'- 2869'	Fresh water
2869'- TD	Start mudding up at 3300'; viscosity 36 to 38 seconds; water loss 10 cc or less; 3-5% Diesel; 2 KCL

Mud additives will be used to control water loss.
7. AUXILIARY EQUIPMENT: full-opening kelly cock, to fit the drill string in use, will be kept on the rig floor at all times.

Remmele Federal #2
SW1/4SE1/4 Sec. 25-6S-22E
Chaves County, New Mexico





MCKAY OIL CORPORATION
 Remmele Federal #2
 SW1/4SE1/4 Sec. 25-6S-22E
 Chaves County, New Mexico

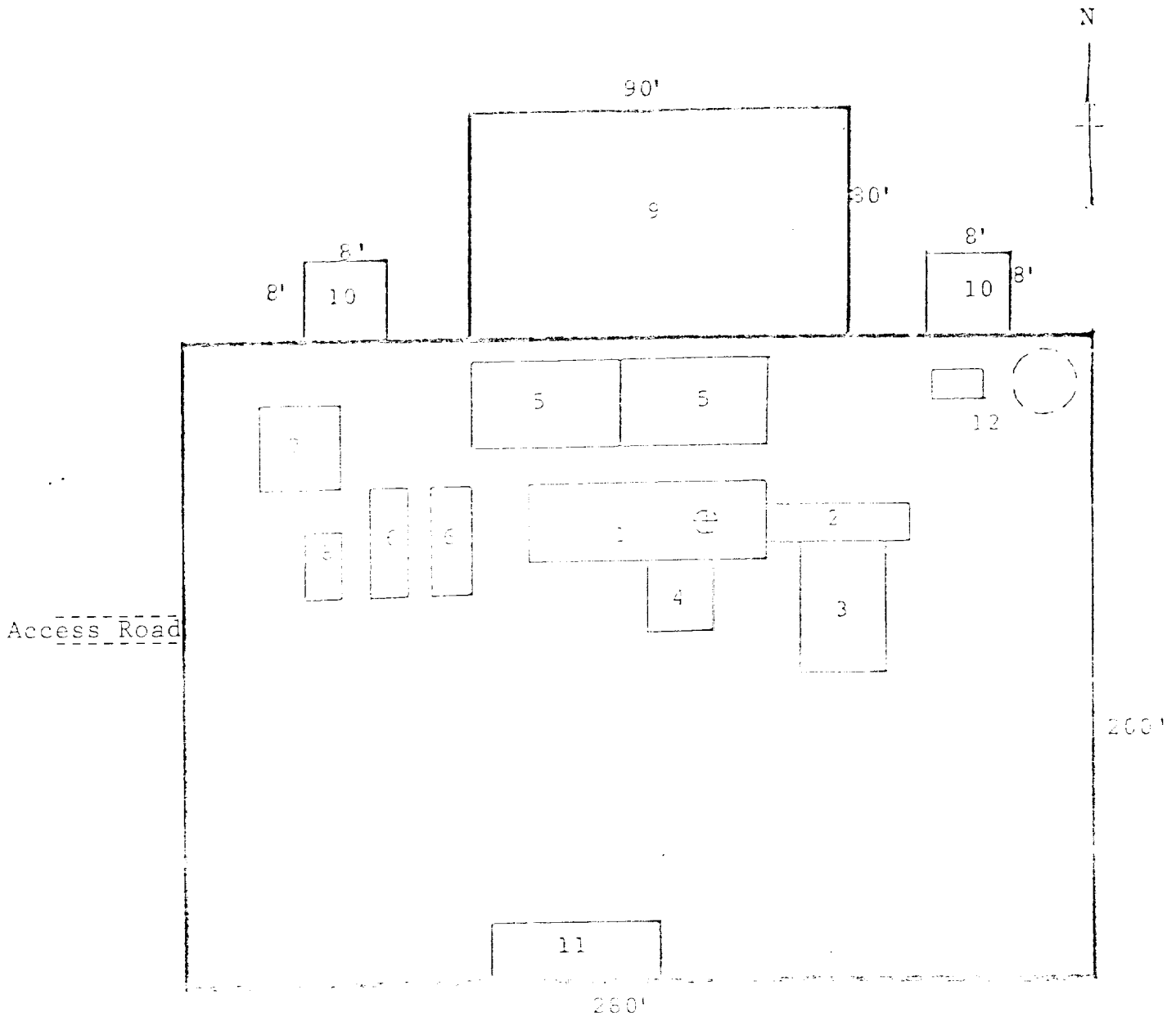


FIG. LAYOUT

- | | |
|-----------------|---------------------------|
| 1. Substructure | 7. Water Tank |
| 2. Catwalk | 8. Night Plant |
| 3. Pipe Rack | 9. Reserve Pit |
| 4. Doghouse | 10. Trash Pit |
| 5. Mud Pits | 11. Trailer House |
| 6. Mud Pumps | 12. Production Facilities |