

NM OIL CONS. COM. UNITED STATES  
Drawer DEPARTMENT OF THE INTERIOR  
Artesia, NM 88210  
GEOLOGICAL SURVEY

30-005-62309

## APPLICATION FOR PERMIT TO DRILL, DEEPEN, OR PLUG BACK

1a. TYPE OF WORK DRILL <input checked="" type="checkbox"/> DEEPEN <input type="checkbox"/> PLUG BACK <input type="checkbox"/>		5. LEASE DESIGNATION AND SERIAL NO. NM-36194
b. TYPE OF WELL OIL WELL <input type="checkbox"/> GAS WELL <input checked="" type="checkbox"/> OTHER <input type="checkbox"/>		6. IF INDIAN, ALLOTTEE OR TRIBE NAME
2. NAME OF OPERATOR McKay Oil Corporation		7. UNIT AGREEMENT NAME
3. ADDRESS OF OPERATOR P.O. Box 2014, Roswell, New Mexico 88202		8. FARM OR LEASE NAME South Four Mile Draw Fed.
4. LOCATION OF WELL (Report location clearly and in accordance with any State requirements.) At surface 660' FNL & 1780' FWL At proposed prod. zone same		9. WELL NO. #1
14. DISTANCE IN MILES AND DIRECTION FROM NEAREST TOWN OR POST OFFICE Approx. 24 miles north of Roswell, New Mexico		10. FIELD AND POOL OR WILDCAT W. Pecos Slope Abo Gas Wildcat
15. DISTANCE FROM PROPOSED LOCATION TO NEAREST PROPERTY OR LEASE LINE, FT. (Also to nearest drlg. unit line, if any) 660'	16. NO. OF ACRES IN LEASE 2520.00	11. SEC., T., R., M., OR BLK. AND SURVEY OR AREA Sec. 22-6S-22E
18. DISTANCE FROM PROPOSED LOCATION TO NEAREST WELL, DRILLING, COMPLETED, OR APPLIED FOR, ON THIS LEASE, FT. N/A	19. PROPOSED DEPTH 3400'	12. COUNTY OR PARISH Chaves
21. ELEVATIONS (Show whether DF, RT, GR, etc.) 4291' GR	20. ROTARY OR CABLE TOOLS Rotary	13. STATE NM
22. APPROX. DATE WORK WILL START ASAP		

## 23. PROPOSED CASING AND CEMENTING PROGRAM

SIZE OF HOLE	SIZE OF CASING	WEIGHT PER FOOT	SETTING DEPTH	QUANTITY OF CEMENT
12 1/2"	8 5/8"	24.0 J-55	900' ±	850 cf cement circulated
7 7/8"	4 1/2"	10.5 J-55	TD	1200 cf cement including 480 cf to tie in 4 1/2" to 8 5/8" from 1500' to 800'

We propose to drill and test the Abo formation. Approximately 900' of surface casing will be set and cemented to surface. If commercial, 4 1/2" production casing will be run and cemented with adequate cover, perforated and stimulate as needed for production.

MUD PROGRAM: See Supplemental Drilling Data which is attached.

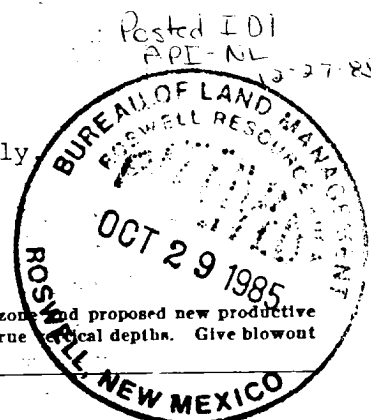
BOP PROGRAM: BOP will be installed on 8 5/8" casing and tested daily.

Gas is not dedicated.

IN ABOVE SPACE DESCRIBE PROPOSED PROGRAM: If proposal is to deepen or plug back, give data on present productive zone and proposed new productive zone. If proposal is to drill or deepen directionally, give pertinent data on subsurface locations and measured and true vertical depths. Give blowout preventer program, if any.

24. SIGNED James L. Shultz TITLE Landman DATE 10-29-85  
(This space for Federal or State office use)

PERMIT NO. \_\_\_\_\_ APPROVAL DATE \_\_\_\_\_  
APPROVED BY Phil Kirk TITLE Area Manager DATE 12 DEC 1985  
CONDITIONS OF APPROVAL, IF ANY:



All Distances must be from the outer boundaries of the Section.

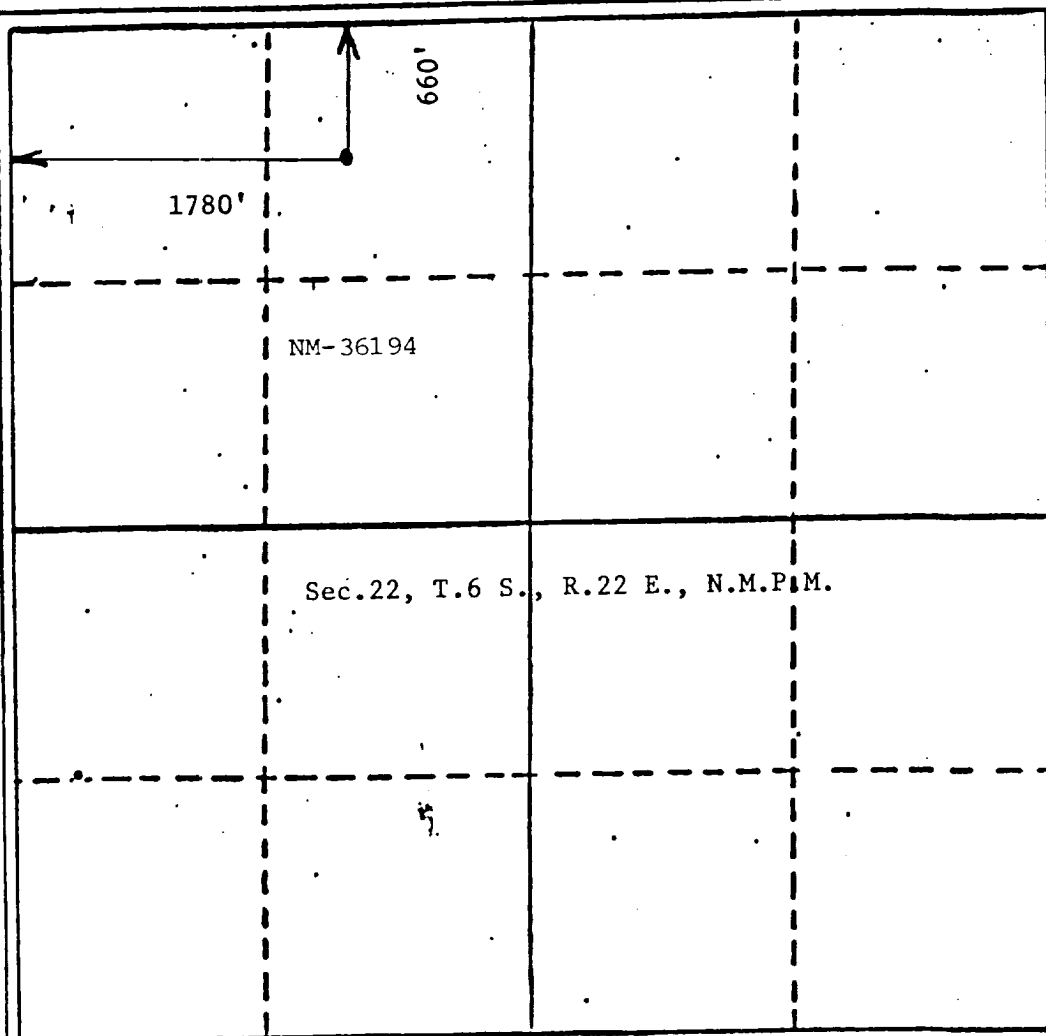
Operator <b>McKay Oil Corp.</b>			Lease <b>South Four Mile Draw Federal</b>		Well No. <b>#1</b>
Unit Letter <b>C</b>	Section <b>22</b>	Township <b>6 South</b>	Range <b>22 East</b>	County <b>Chaves</b>	
Actual Wellbore Location of Well					
660 feet from the		North line and	1780 feet from the		West line
Ground Level Elev. <b>4281</b>	Producing Formation <b>Abo</b>		Pool <b>W. Pecos Slope Abo Gas undesignated</b>		Dedicated Acreage <b>.160</b> Acres

1. Outline the acreage dedicated to the subject well by colored pencil or hatchure marks on the plat below.
2. If more than one lease is dedicated to the well, outline each and identify the ownership thereof (both as to working interest and royalty).
3. If more than one lease of different ownership is dedicated to the well, have the interests of all owners been consolidated by communitization, unitization, force-pooling, etc?

☐ Yes ☐ No If answer is "yes," type of consolidation \_\_\_\_\_

If answer is "no," list the owners and tract descriptions which have actually been consolidated. (Use reverse side of this form if necessary.) \_\_\_\_\_

No allowable will be assigned to the well until all interests have been consolidated (by communitization, unitization, forced-pooling, or otherwise) or until a non-standard unit, eliminating such interests, has been approved by the Division



#### CERTIFICATION

I hereby certify that the information contained herein is true and complete to the best of my knowledge and belief.

*James L. Schultz*  
Name  
**James L. Schultz**

Position  
**Landman**

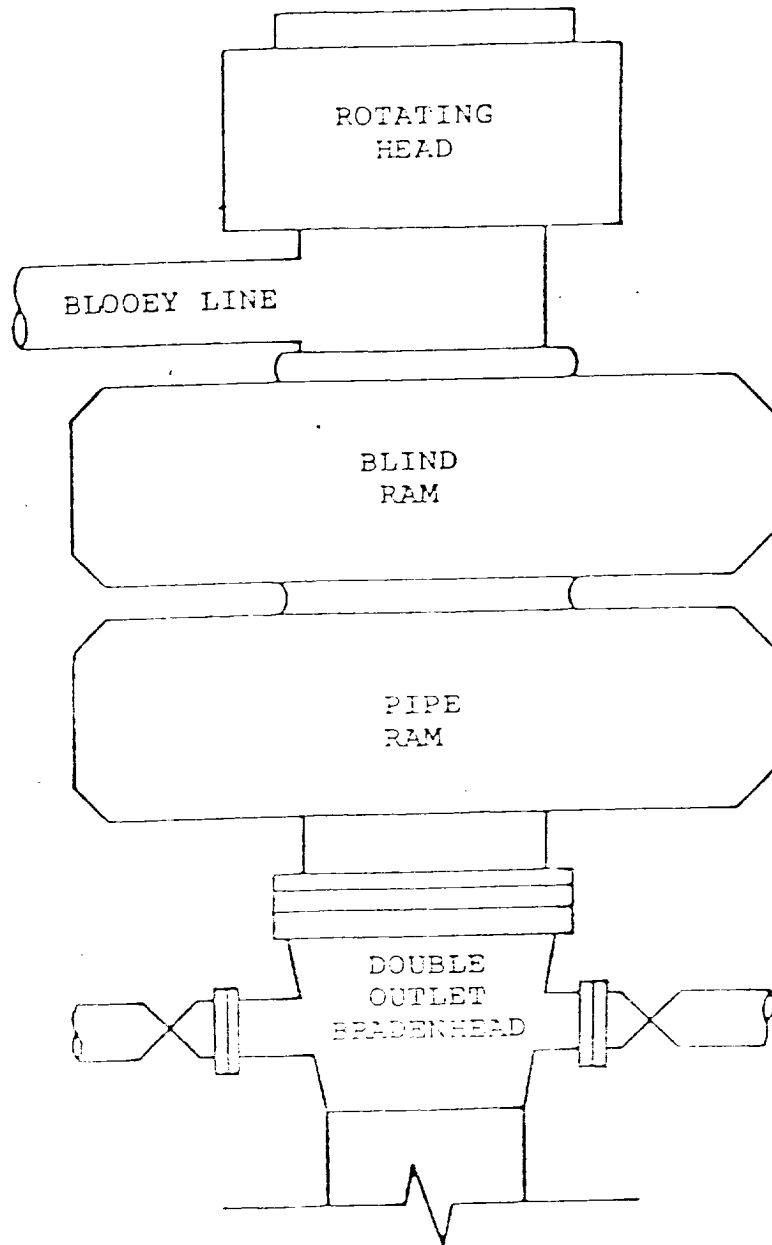
Company  
**McKay Oil Corporation**

Date  
**10-29-85**

I hereby certify that the well location shown on this plat was plotted from field notes of actual surveys made by me or under my supervision, and that the same is true and correct to the best of my knowledge and belief.

Date Surveyed  
**October 25, 1985**  
Registered Professional Engineer and/or Land Surveyor  
**5250**  
**JOHN D. JACQUES, P.E. & L.S.**  
Certificate No. **5250**

MCKAY OIL CORPORATION  
South Four Mile Draw Federal #1  
NE1/4NW1/4 Sec. 22-6S-22E  
Chaves County, New Mexico



BOP STACK

3000 PSI WORKING PRESSURE

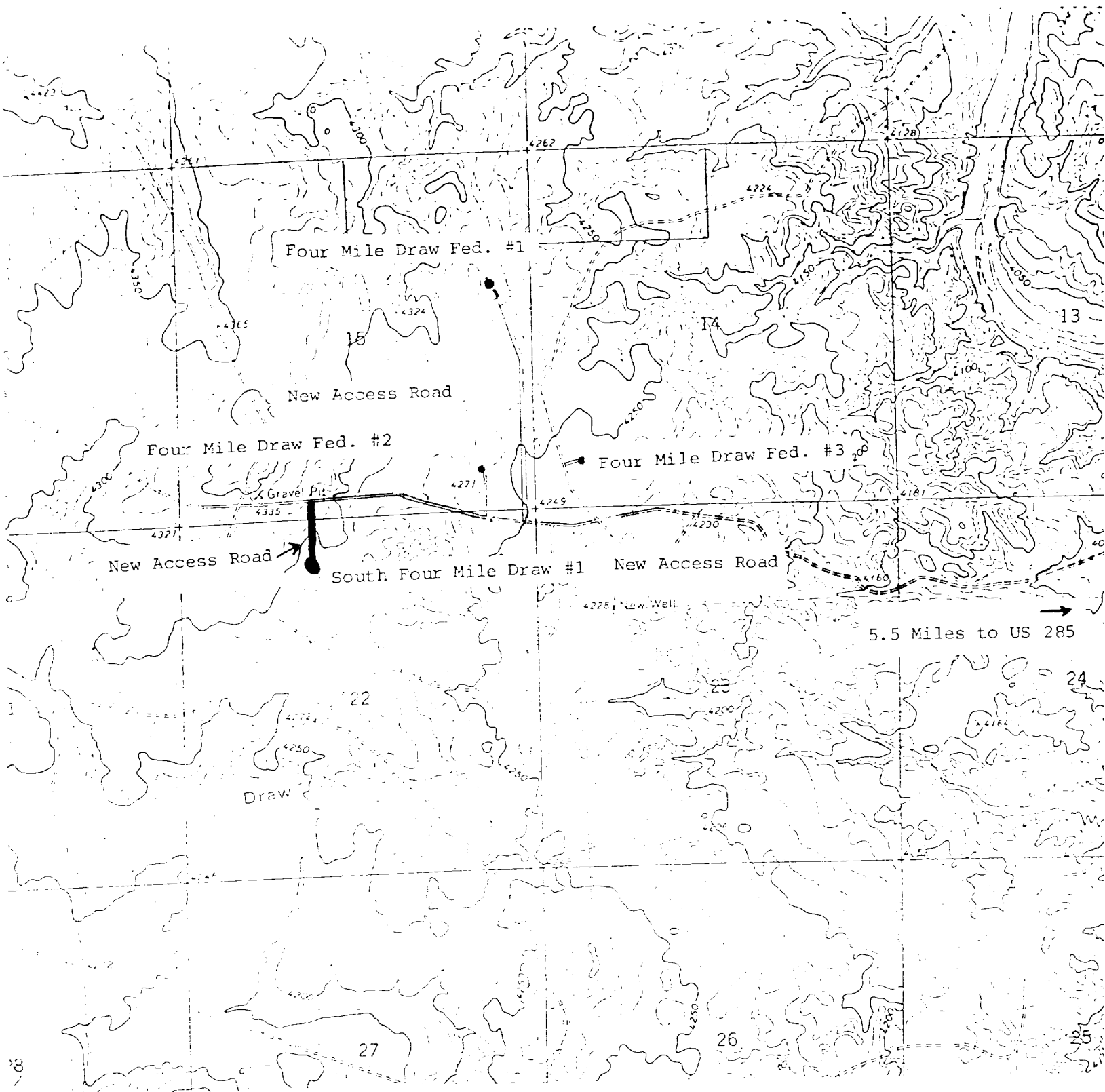
SUPPLEMENTAL DRILLING DATA

McKAY OIL CORPORATION  
South Four Mile Draw Federal #1  
NE1/4NW1/4 Sec.22-6S-22E  
Chaves County, N.M.

NM 36194

The following items supplement Form 9-331C in accordance with instructions contained in NTL-6.

1. SURFACE FORMATION: San Andres
2. ESTIMATED TOPS OF GEOLOGIC MARKERS:  
Yeso - 842'  
Tubb - 2372'  
Abo - 3052'
3. ESTIMATED DEPTHS TO WATER, OIL OR GAS FORMATION:  
Fresh water - In surface formations above 791'  
Gas - In Abo formation below 3052'
4. PROPOSED CASING PROGRAM: See Form 9-331C
5. PRESSURE CONTROL EQUIPMENT: Blowout preventer stack will consist of at least a double-ram blowout preventer rated to 3000#WP. A sketch of the BOP is attached.
6. CIRCULATING MEDIUM:  
0'- 842' Lime and gel, spud mud, viscosity 32 to 34 seconds.  
842'- 2991' Fresh water  
2991'- TD Start mudding up at 3300'; viscosity 36 to 38 seconds; water loss 10 cc or less; 3-5% Diesel; 2 KCL  
Mud additives will be used to control water loss.
7. AUXILIARY EQUIPMENT: full-opening kelly cock, to fit the drill string in use, will be kept on the rig floor at all times.



MCKAY OIL CORPORATION  
South Four Mile Draw Federal #1  
NE1/4NW1/4 Sec. 22-6S-22E  
Chaves County, New Mexico

MCKAY OIL CORPORATION  
 South Four Mile Draw Federal #1  
 NE1/4NW1/4 Sec. 22-6S-22E  
 Chaves County, New Mexico

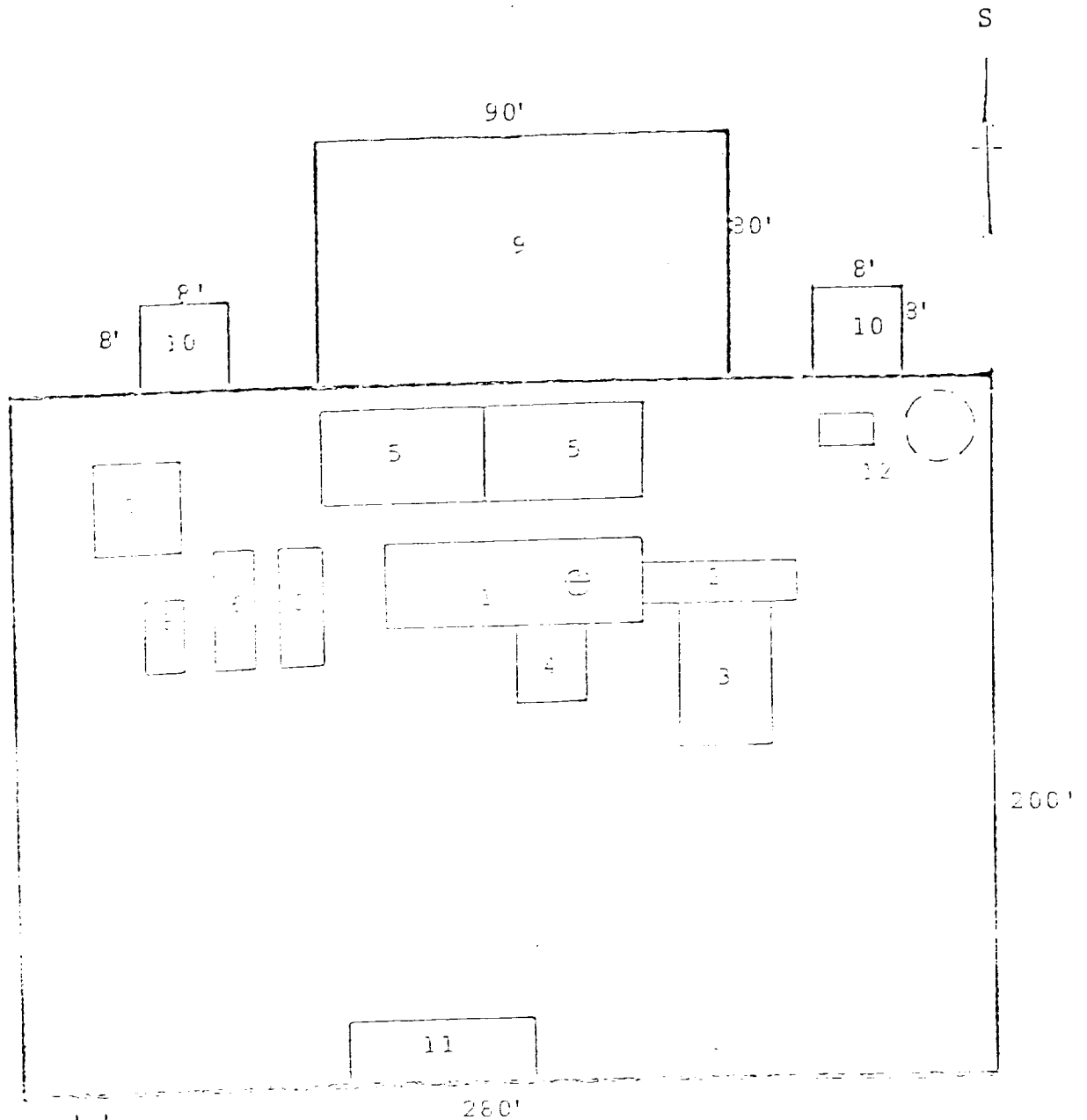


FIG. LAYOUT

Access Road

- 1. Cylindrical
- 2. Cylindrical
- 3. Pipe Rack
- 4. Bighouse
- 5. Mud Pits
- 6. Mud Pumps

- 7. Water Tank
- 8. Light Plant
- 9. Reserve Pit
- 10. Trash Pit
- 11. Trailer House
- 12. Production Facilities