

30-005-62318

APPLICATION FOR PERMIT TO DRILL, DEEPEN OR PLUG BACK

1a. TYPE OF WORK

DRILL ☒DEEPEN ☐PLUG BACK ☐

b. TYPE OF WELL

OIL
WELL ☐GAS
WELL ☒

OTHER

2. NAME OF OPERATOR

Yates Petroleum Corporation ✓

3. ADDRESS OF OPERATOR

207 South Fourth Street - Artesia, New Mexico 88210

4. LOCATION OF WELL (Report location clearly and in accordance with any State requirements.)*

At surface

990' FSL and 660' FWL

At proposed prod. zone

Same

14. DISTANCE IN MILES AND DIRECTION FROM NEAREST TOWN OR POST OFFICE*

Approximately 10 miles east of Roswell, New Mexico

15. DISTANCE FROM PROPOSED*

LOCATION TO NEAREST
PROPERTY OR LEASE LINE, FT.
(Also to nearest drig. unit line, if any)

660'

18. DISTANCE FROM PROPOSED LOCATION*
TO NEAREST WELL, DRILLING, COMPLETED,
OR APPLIED FOR, ON THIS LEASE, FT.

16. NO. OF ACRES IN LEASE

720.38

19. PROPOSED DEPTH

4850'

17. NO. OF ACRES ASSIGNED
TO THIS WELL

160

20. ROTARY OR CABLE TOOLS

Rotary

21. ELEVATIONS (Show whether DF, RT, GR, etc.)

3717.5' GR

22. APPROX. DATE WORK WILL START*

ASAP

23.

PROPOSED CASING AND CEMENTING PROGRAM

SIZE OF HOLE	SIZE OF CASING	WEIGHT PER FOOT	SETTING DEPTH	QUANTITY OF CEMENT
14-3/4"	10-3/4"	40.5# J-55	Approx. 900'	800 sacks - circulate
7-7/8"	4-1/2"	9.5# J-55	TD	350 sacks

We propose to drill and test the Abo and intermediate formations. Approximately 1000' of surface casing will be set and cement circulated to shut off gravel and cavings. If needed for lost circulation, 8-5/8" intermediate casing will be run to 1500' and cemented with enough cement calculated to tie back into the surface casing. If commercial, production casing will be run and cemented with adequate cover, perforated and stimulated as needed for production.

MUD PROGRAM: FW gel/LCM to 900', brine to 3500', brine/SW gel/starch to TD.

BOP PROGRAM: BOP's will be installed at the offset and tested daily

GAS NOT DEDICATED

IN ABOVE SPACE DESCRIBE PROPOSED PROGRAM: If proposal is to deepen or plug back, give data on present productive zone and proposed productive zone. If proposal is to drill or deepen directionally, give pertinent data on subsurface locations and measured and true vertical depths. If blowout preventer program, if any.

24.

SIGNED

Clifton R. May

TITLE Regulatory Agent

(This space for Federal or State office use)

PERMIT NO.

APPROVAL DATE

APPROVED BY S/Phil Kirk

TITLE

Area Manager

DATE

2-6-86

CONDITIONS OF APPROVAL, IF ANY:

**NEW MEXICO OIL CONSERVATION COMMISSION
WELL LOCATION AND ACREAGE DEDICATION PLAT**

Form C-102
Supersedes C-120
Effective 1-1-65

All distances must be from the outer boundaries of the Section

Operator Yates Petroleum Corporation		Location Ogle "ADB" Federal		Well No. #1
Unit Letter M	Section 31	Township 10S.	Range 26E.	County Chavez
Actual Footage Location of Well: 990 feet from the South line and 660 feet from the West line				
Ground Level Elev. 3717.5	Producing Formation A60	Pool PECOS SCORE A60	Dedicated Acreage: 160 Acres	

- Outline the acreage dedicated to the subject well by colored pencil or hatchure marks on the plat below.
- If more than one lease is dedicated to the well, outline and identify the ownership thereof (both as to working interest and royalty).
- If more than one lease of different ownership is dedicated to the well, have the interests of all owners been consolidated by communitization, unitization, force-pooling, etc? **O. C. D.**
☐ Yes ☐ No If answer is "yes," type of consolidation: **ARTESIA, OFFICE**

If answer is "no," list the owners and tract descriptions which have actually been consolidated. (Use reverse side of this form if necessary.) _____

No allowable will be assigned to the well until all interests have been consolidated (by communitization, unitization, forced-pooling, or otherwise) or until a non-standard unit, eliminating such interests, has been approved by the Commission.

CERTIFICATION

I hereby certify that the information contained herein is true and complete to the best of my knowledge and belief.

Clifton R. May

Name

Clifton R. May

Position

Regulatory Agent

Company

Yates Petroleum Corporation

Date

January 28, 1986

I hereby certify that the well location shown on this plat was plotted from field notes of actual surveys made by me or under my supervision, and that the same is true and correct to the best of my knowledge and belief.

Date Surveyed

1/23/86

Registered Professional Engineer and/or Land Surveyor

Certificate No.

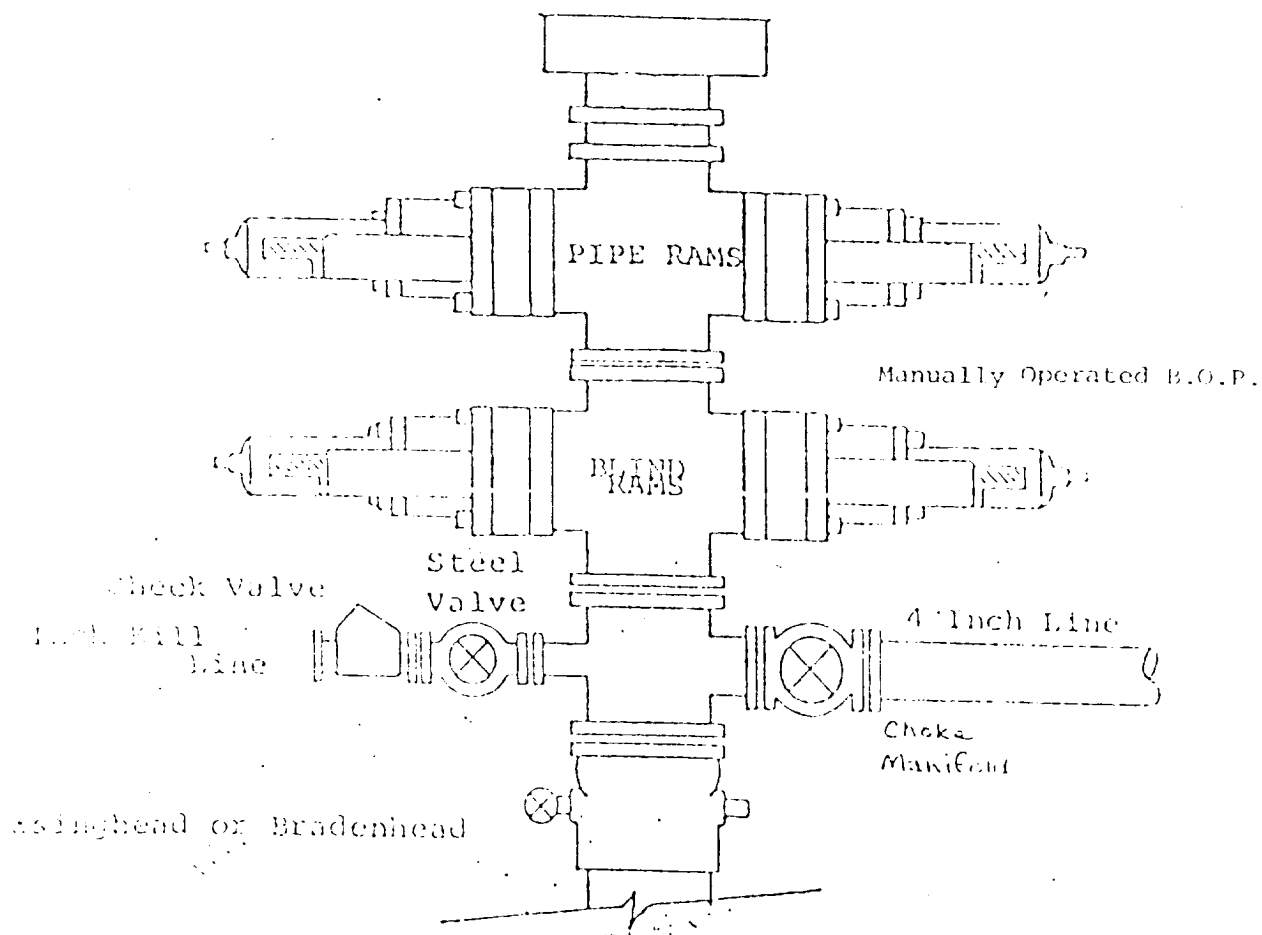
3640

330 660 990 1320 1650 1980 2310 2640 2000 1500 1000 500 0

EXHIBIT B

BDP DIAGRAM

RATED 3000[#]



YATES PETROLEUM CORPORATION
Ogle ADB Federal #1
990' FSL and 660' FWL of
Section 31-10S-26E
Chaves County, New Mexico

In conjunction with Form 9-331C, Application for Permit to Drill subject well, Yates Petroleum Company submits the following ten items of pertinent information in accordance with BLM requirements.

1. The geologic surface formation is sandy alluvium.
2. The estimated tops of geologic markers are as follows:

San Andres	810'
Glorieta	1885'
Yeso	2015'
Abo	4200'
TD	4850'

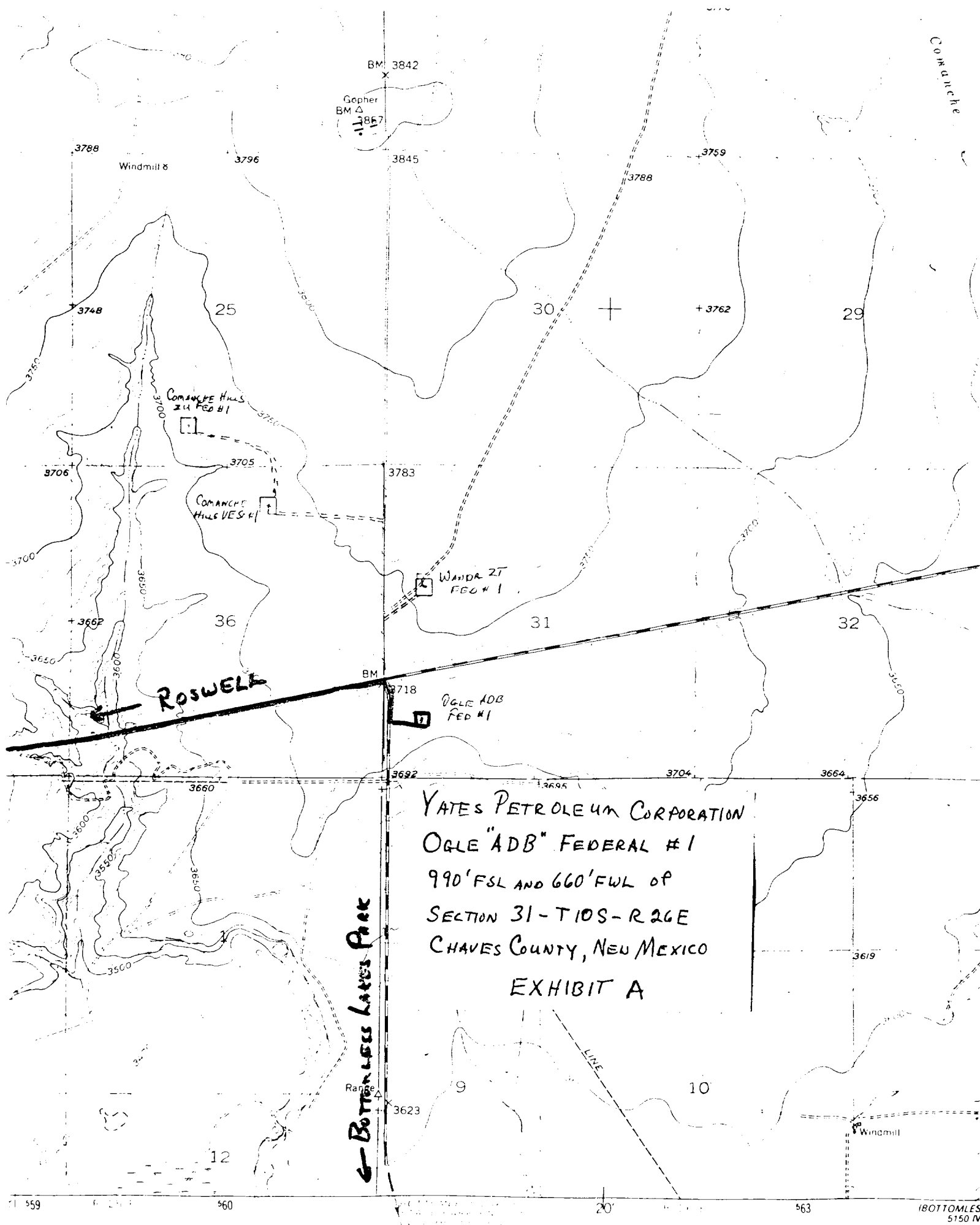
3. The estimated depths at which anticipated water, oil or gas formations are expected to be encountered:

Water: 250-300'

Oil or Gas: 4200'

4. Proposed Casing Program: See Form 9-331C.
5. Pressure Control Equipment: See Form 9-331C.
6. Mud Program: See Form 9-331C.
7. Auxiliary Equipment: Kelly Cock; pit level indicators and flow sensor equipment;
sub with full-opening valve on floor, drill pipe connection.
8. Testing, Logging and Coring Program:

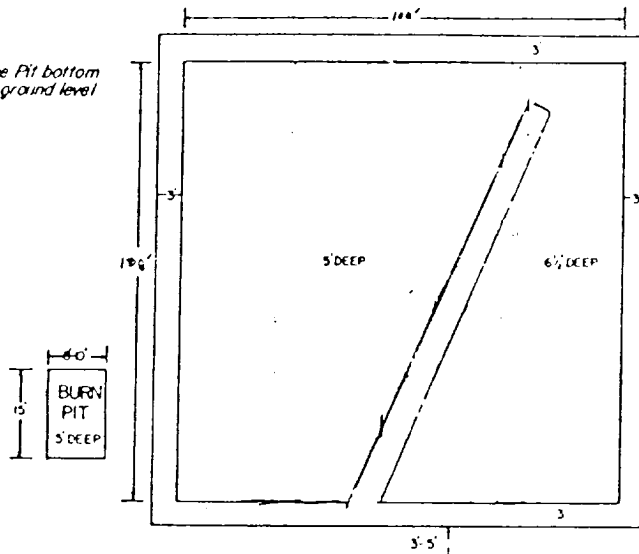
Samples: Surface casing to TD
DST's: As warranted
Coring: None anticipated
Logging: CNL-FDC from TD to casing with GR-CNL on to surface; DLL from TD to casing
9. No abnormal pressures or temperatures are anticipated.
10. Anticipated starting date: As soon as possible after approval.



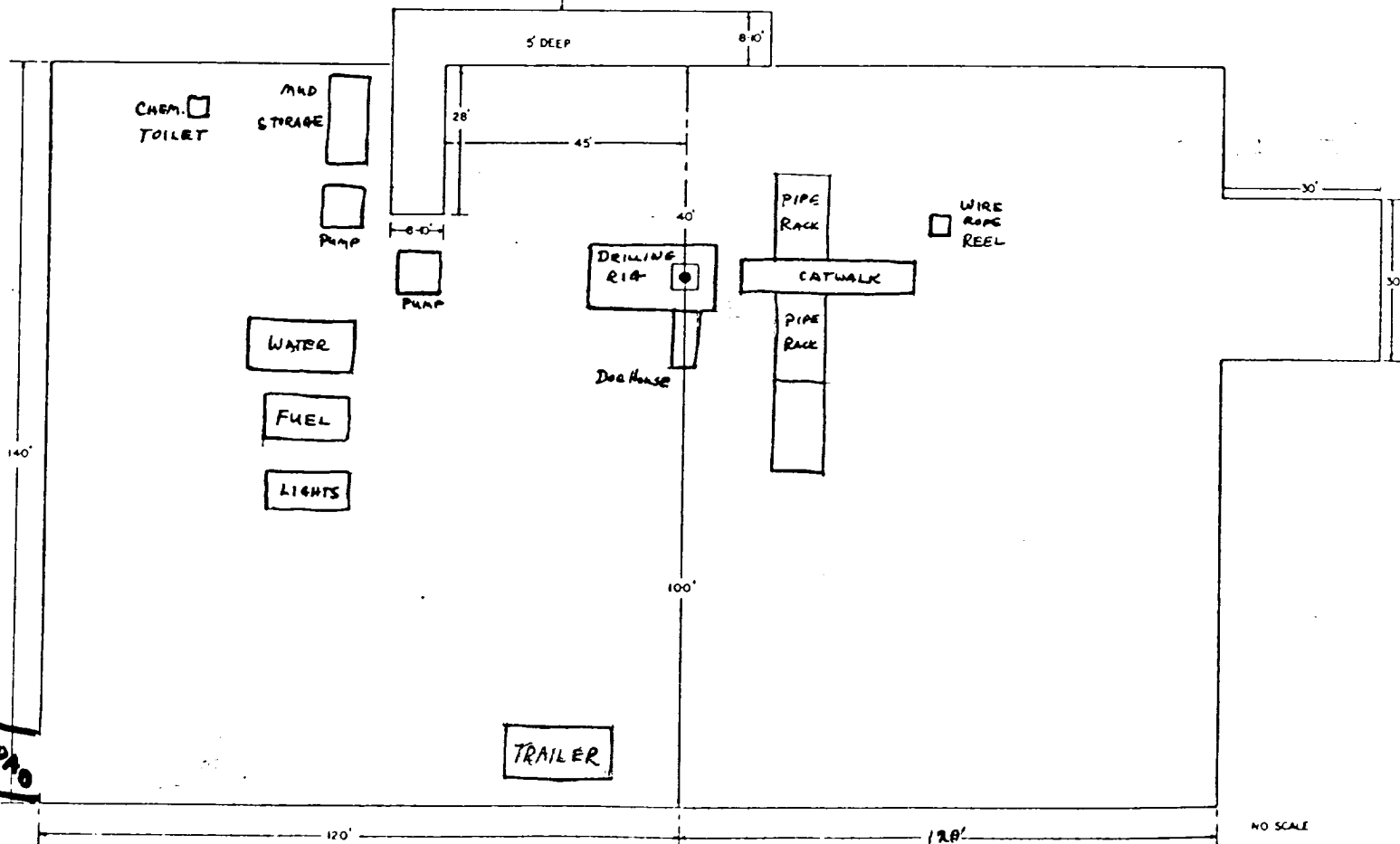
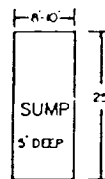
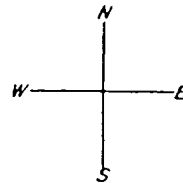
YATES PETROLEUM CORPORATION

EXHIBIT C

Reserve Pit bottom
to be at ground level
to -1 ft.



NOTE:
Inside walls must be as
high and wide as outer
walls of pit.



NO SCALE