

STATE OF NEW MEXICO
ENERGY AND MINERALS DEPARTMENT

OIL CONSERVATION DIVISION

P. O. BOX 2088

SANTA FE, NEW MEXICO 87501

Form C-102
Revised 10-1-78

All distances must be from the outer boundaries of the Section.

Operator R. N. Ainsworth, Inc.		Lease Cooper Federal		Well No. 1
Init Letter B	Section 28	Township 6 South	Range 27 East	County Chaves
Actual Footage Location of Well: 723 feet from the North line and 2016 feet from the East line				
Ground Level Elev. 4059	Producing Formation Cisco	Pool Haystack Cisco	Dedicated Acreage: 320 Acres	

1. Outline the acreage dedicated to the subject well by colored pencil or hachure marks on the plat below.
2. If more than one lease is dedicated to the well, outline each and identify the ownership thereof (both as to working interest and royalty).
3. If more than one lease of different ownership is dedicated to the well, have the interests of all owners been consolidated by communitization, unitization, force-pooling, etc?

☐ Yes ☐ No If answer is "yes," type of consolidation _____

If answer is "no," list the owners and tract descriptions which have actually been consolidated. (Use reverse side of this form if necessary.) _____

No allowable will be assigned to the well until all interests have been consolidated (by communitization, unitization, forced-pooling, or otherwise) or until a non-standard unit, eliminating such interests, has been approved by the Division.

NM-45221 Anadarko Petroleum Corp.		723		2016	

CERTIFICATION

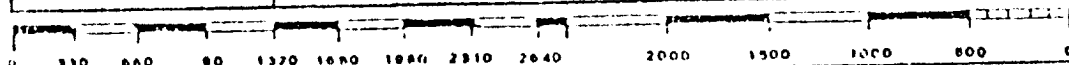
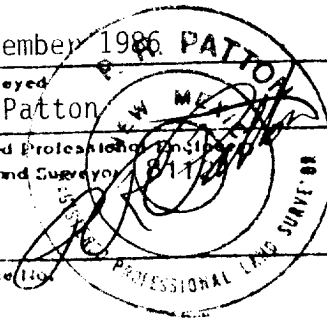
I hereby certify that the information contained herein is true and complete to the best of my knowledge and belief.

George R. Smith

Name
George R. Smith
Position
Agent for:
Company
R. N. Ainsworth, Inc.
Date
Nov. 24, 1986

I hereby certify that the well location shown on this plat was plotted from field notes of actual surveys made by me or under my supervision, and that the same is true and correct to the best of my knowledge and belief.

21 November 1986
Date Surveyed
P. R. Patton
Registered Professional Engineer
and/or Land Surveyor
8112
Certificate No. _____



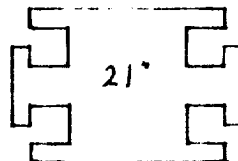
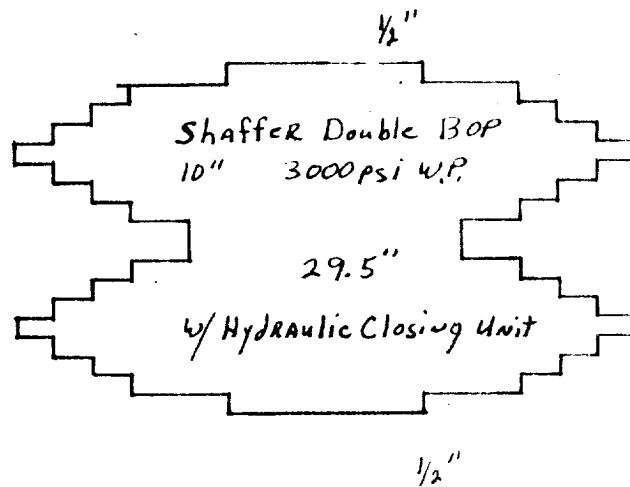
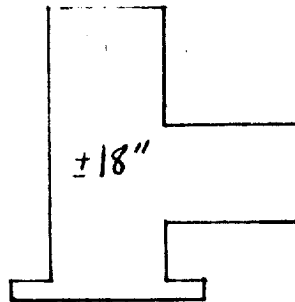


EXHIBIT "E"
R. N. AINSWORTH, INC.
Cooper Federal, Well No. 1
BOP Specifications

APPLICATION FOR DRILLING

R. N AINSWORTH, INC.
Cooper Federal, Well No. 1
723' FNL & 2016' FEL, Sec. 28-T6S-R27E
Chaves County, New Mexico
Lease No.: NM-45221
(Development Well)

In conjunction with Form 9-331C, Application for Permit to Drill subject well, R. N. Ainsworth, Inc. submits the following items of pertinent information in accordance with BLM requirements:

1. The geologic surface formation is recent Permian with quaternary alluvium and other surficial deposits.
2. The estimated tops of geologic markers are as follows:

San Andres	1196'	Cisco Pay	5714'
Glorieta	2332'	Missippi	6109'
Tubb	3763'	Montoya Dolo.	6201'
Abo	4448'	Granite Wash	6287'
Wolfcamp	5152'	T.D.	6330'

3. The estimated depths at which water, oil or gas formations are anticipated to encountered:

Water: Surface water between 100' to 300'.

Oil: Possible in the Montoya below 6201'.

Gas: In the Abo at approximately 4448' and the Cisco approx. 5714'

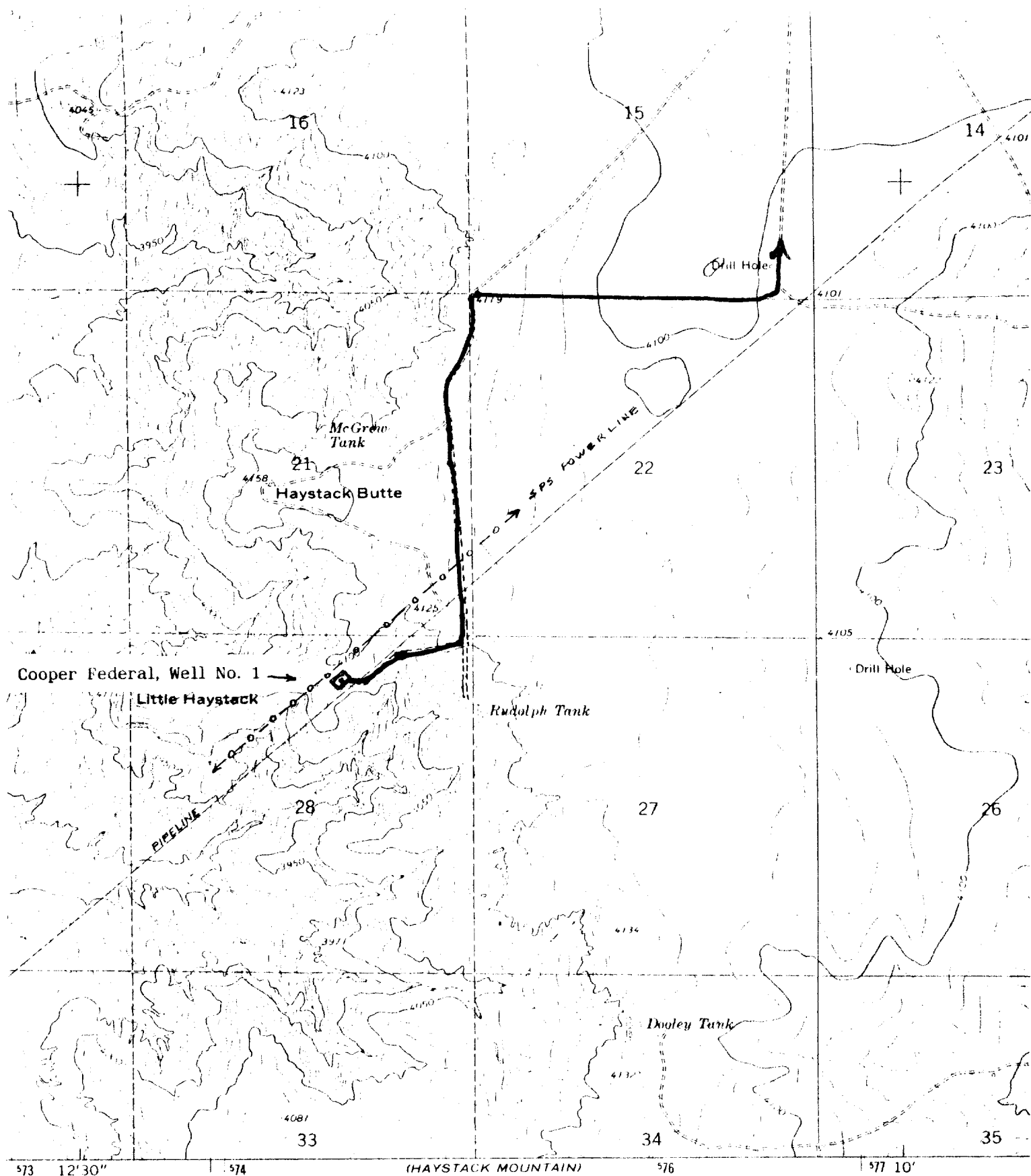
4. Proposed Casing Program: See Form 9-331C.
5. Proposed Control Equipment: See Form 9-331C and Exhibit "E".
6. Mud Program: See Form 9-331C.
7. Auxiliary Equipment: Blowout preventer, gas detector, kelly cock, pit level monitor, flow sensors and stabbing valve.
8. Testing, Logging, and Coring Program:

Drill Stem Tests: As warranted.

Logging: Intermediate Casing to T.D.: G/R, CNL-FDC, DLL, MLL
Surface Casing to T.D.: G/R, CNL

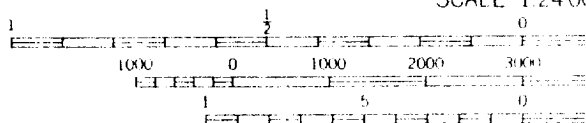
Coring: None planned.

9. No abnormal pressures or temperatures are anticipated. In the event abnormal pressures are encountered the proposed mud program will be modified.
10. Anticipated starting date: November 28, 1986.
Anticipated completion of drilling operations: Approximately 35 days



(HAYSTACK MOUNTAIN)

5151 II NW
SCALE 1:2400



CONTOUR INTERVAL
DATUM IS MEAN SL

EXHIBIT "B"

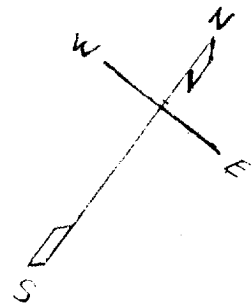
R. N. AINSWORTH, INC.

Cooper Federal, Well No. 1

723' FNL & 1616' FEL, Sec. 28-T6S-R27E

Existing Access Road: —

Proposed Access Road: —



SOUTHWESTERN PUBLIC SERVICE POWERLINE

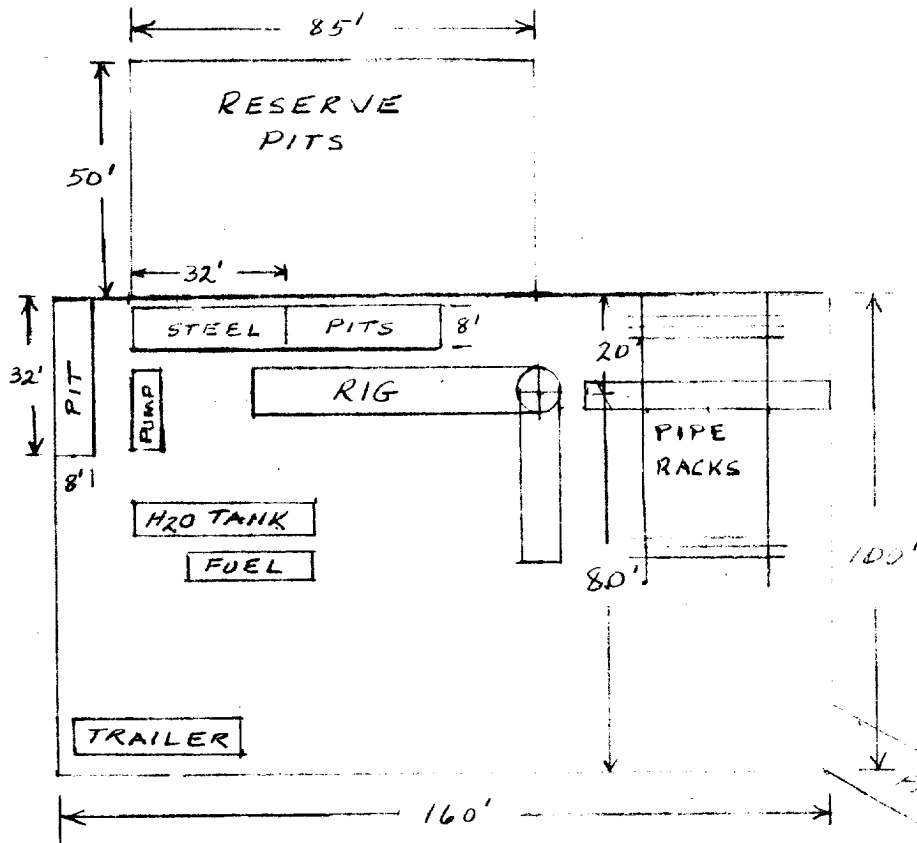


EXHIBIT "D"
R. N. AINSWORTH, INC.
Cooper Federal, Well No. 1
Rig Layout

TRANSWESTERN PIPELINE R/W

EXISTING PIPELINE R/W ACCESS ROAD