

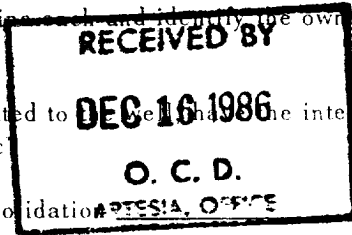
**N MEXICO OIL CONSERVATION COMMISSION
WELL LOCATION AND ACREAGE DEDICATION PLAT**

Form C-102
Supersedes C-128
Effective 1-1-65

All distances must be from the outer boundaries of the Section.

Operator FRED POOL DRILLING INC. ✓			Lease Byrom State		Well No. 2
Unit Letter I	Section 1	Township 9 South	Range 26 East	County Chaves	
Actual Footage Location of Well: 2310 feet from the South line and 990 feet from the East line					
Ground Level Elev. 3884.	Producing Formation San Andres		Pool W C - SA	Dedicated Acreage 40 Acres	

1. Outline the acreage dedicated to the subject well by colored pencil or hachure marks on the plat below.
2. If more than one lease is dedicated to the well, outline each and identify the ownership thereof (both as to working interest and royalty).
3. If more than one lease of different ownership is dedicated to the well and the interests of all owners have been consolidated by communitization, unitization, force-pooling, etc.

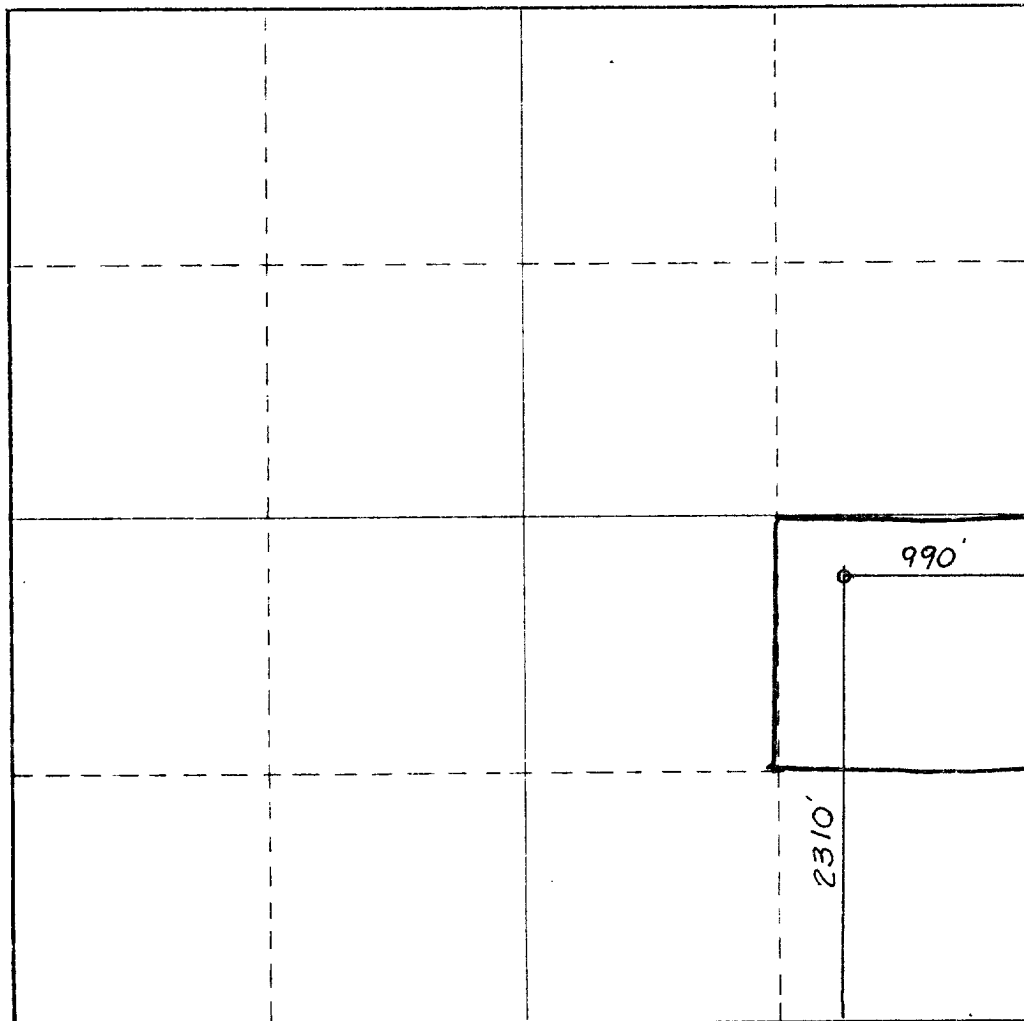


☐ Yes ☐ No

If answer is "yes," type of consolidation

If answer is "no," list the owners and tract descriptions which have actually been consolidated. (Use reverse side of this form if necessary.)

No allowable will be assigned to the well until all interests have been consolidated (by communitization, unitization, forced-pooling, or otherwise) or until a non-standard unit, eliminating such interests, has been approved by the Commission.



CERTIFICATION

I hereby certify that the information contained herein is true and complete to the best of my knowledge and belief.

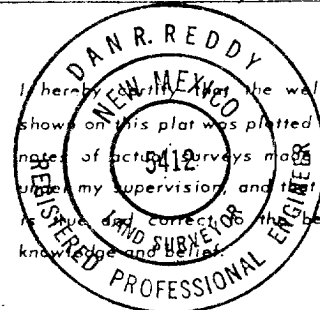
[Signature]
Name

Fred Pool, Jr.

Position
President

Company
Fred Pool Drilling, Inc.

Date
December 16, 1986



I hereby certify that the well location shown on this plat was plotted from field notes of actual surveys made by me or under my supervision, and that the same is true and correct to the best of my knowledge and belief.

Date Surveyed
December 15, 1986

Registered Professional Engineer and/or Land Surveyor

[Signature]
Certificate No.

NM PE&LS NO. 5412

