

NM Oil Cons. Commission
Drawer DD
Artesia, NM
DEPARTMENT OF THE INTERIOR
GEOLOGICAL SURVEYSUBMIT IN TRIPLICATE*
(Other instructions on
reverse side)Form approved.
Budget Bureau No. 42-R1425.

C/SF

APPLICATION FOR PERMIT TO DRILL, DEEPEN, OR PLUG BACK

1. TYPE OF WORK

DRILL ☒DEEPEN ☐PLUG BACK ☐

2. TYPE OF WELL

OIL ☐GAS ☒OTHER ☐SINGLE ☒MULTIPLE ☐

3. NAME OF OPERATOR

McKay Oil Corporation

4. ADDRESS OF OPERATOR

P.O. Box 2014, Roswell, New Mexico 88202

5. LOCATION OF WELL (Report location clearly and in accordance with any State requirements.)

660FSL-660FEL
At proposed prod. zone

6. DISTANCE IN MILES AND DIRECTION FROM NEAREST TOWN OR POST OFFICE*

same
28 Miles Northwest of Roswell, NM

7. DISTANCE FROM PROPOSED*

LOCATION TO NEAREST
PROPERTY OR LEASE LINE, FT.
(Also to nearest drlg. unit line, if any) 660'8. DISTANCE FROM PROPOSED LOCATION*
TO NEAREST WELL, DRILLING COMPLETED,
OR APPLIED FOR, ON THIS LEASE, FT.

1 mile

9. NO. OF ACRES IN LEASE

1360.

10. PROPOSED DEPTH

3,400'

11. NO. OF ACRES ASSIGNED
TO THIS WELL

160.0

12. ROTARY OR CABLE TOOLS

Rotary

13. ELEVATIONS (Show whether DF, RT, GR, etc.)

4118'GL

14. APPROX. DATE WORK WILL START*

ASAP

23. PROPOSED CASING AND CEMENTING PROGRAM

SIZE OF HOLE	SIZE OF CASING	WEIGHT PER FOOT	SETTING DEPTH	QUANTITY OF CEMENT
12 1/4"	8 5/8"	24.0 J-55	900±	850 cf cement circulated
7 7/8"	4 1/2"	9.5 J-55	TD	1200 cf cement including 480 cf to tie in 4 1/2" to 8 5/8" from 1500' to 900'.

We propose to drill and test the Abo formation. Approximately 900' of surface casing will be set and cemented to surface. If commercial, 4 1/2" production casing will be run and cemented with adequate cover, perforated and stimulated as needed for production.

MUD PROGRAM: See Supplemental Drilling Data Which is Attached.

BOF PROGRAM: BOP will be installed on 8 5/8" casing and tested daily.

Gas is not dedicated.

Posted ID-1
NL, API
1-16-87

IN ABOVE SPACE DESCRIBE PROPOSED PROGRAM: If proposal is to deepen or plug back, give data on present productive zone and proposed new productive zone. If proposal is to drill or deepen directionally, give pertinent data on subsurface locations and measured and true vertical depths. Give blowout preventer program, if any.

24.

SIGNED

TITLE Landman

DATE 12-22-86

(This space for Federal or State office use)

PERMIT NO

APPROVAL DATE

APPROVED BY

S/Phil Kirk

TITLE

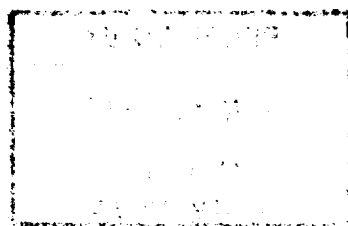
Area Manager

DATE

DEC 29 1986

CONDITIONS OF APPROVAL, IF ANY:

APPROVAL OF THIS APPLICATION DOES NOT WARRANT OR
CERTIFY THAT THE APPLICANT HOLDS LEGAL OR EQUITABLE
TITLE TO THOSE RIGHTS IN THE SUBJECT LEASE WHICH WOULD
ENTITLE THE APPLICANT TO CONDUCT OPERATIONS THEREON.



173-100000
JUN 1970
JUN 1970
JUN 1970

All distances must be from the outer boundaries of the Section.

Operator McKay Oil Corp. ✓		Lease 5 Mile Tank Federal		Well No. #3
Unit Letter P	Section 17	Township 6 South	Range 23 East	County Chaves
Actual Postage Location of Well: 660 feet from the South line and 660 feet from the East line				
Ground Level Elev. 4118	Producing Formation ABO	Pool W. Pecos Slope Abo	Dedicated Acreage: 160 Acres	

1. Outline the acreage dedicated to the subject well by colored pencil or ballpoint marks on the plat below.
2. If more than one lease is dedicated to the well, outline each and identify the ownership thereof (both as to working interest and royalty).
3. If more than one lease of different ownership is dedicated to the well, have the interests of all owners been consolidated by communitization, unitization, force-pooling, etc?

☐ Yes ☐ No If answer is "yes," type of consolidation _____

If answer is "no," list the owners and tract descriptions which have actually been consolidated. (Use reverse side of this form if necessary.) _____

No allowable will be assigned to the well until all interests have been consolidated (by communitization, unitization, forced-pooling, or otherwise) or until a non-standard unit, eliminating such interests, has been approved by the Division.

CERTIFICATION

I hereby certify that the information contained herein is true and complete to the best of my knowledge and belief.

Name
Sam L. Shackelford

Position
Agent

Company
McKay Oil Corp.

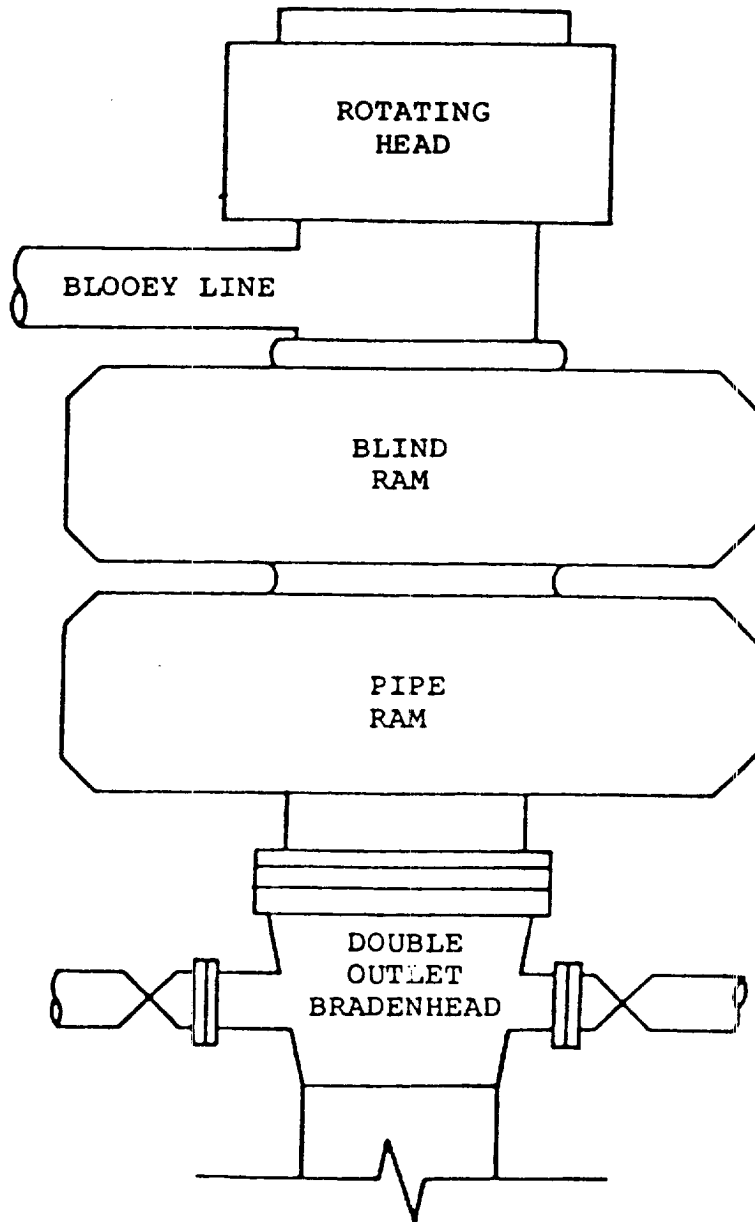
Date
12-22-86

I hereby certify that the well location shown on this plat was plotted from field notes of actual surveys made by me or under my supervision, and that the same is true and correct to the best of my knowledge and belief.

Date Surveyed
December 20, 1986
Registered Professional Engineer and/or Land Surveyor
John D. Jaques
Professional Engineer
Certificate No. 6290

0 330 660 990 1320 1650 1980 2310 2640 2970 3300 3630 3960 4290 4620 4950 5280 5610 5940 6270 6600

MCKAY OIL CORPORATION
Five Mile Tank Federal #3
SE/4SE/4 Sec. 17-6S-23E
Chaves County, New Mexico



BOP STACK

3000 PSI WORKING PRESSURE

SUPPLEMENTAL DRILLING DATA

McKAY OIL CORPORATION
Five Mile Tank Federal #3
SE/4SE/4 Sec. 17-6S-23E
Chaves County, N.M.

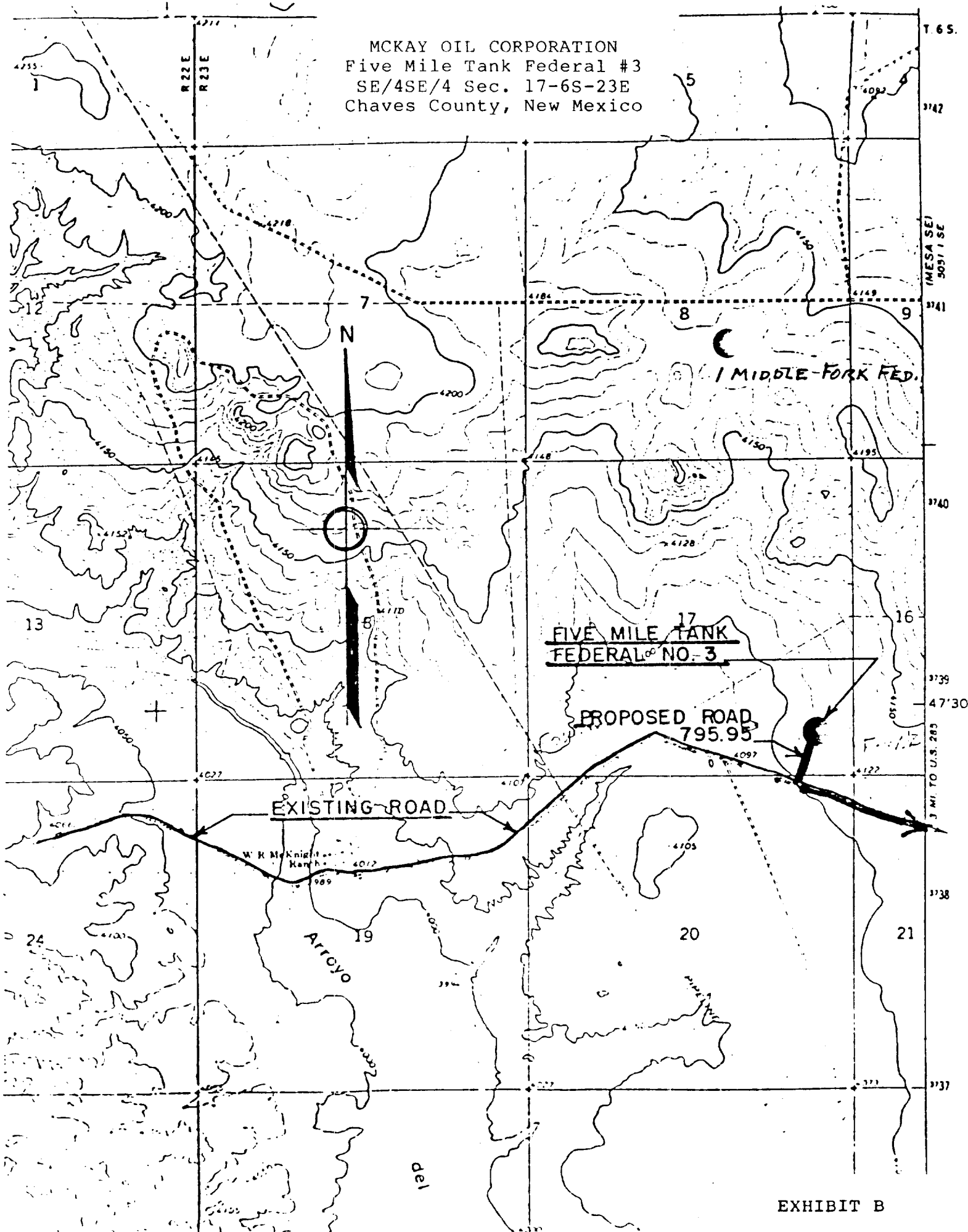
NM 32323A



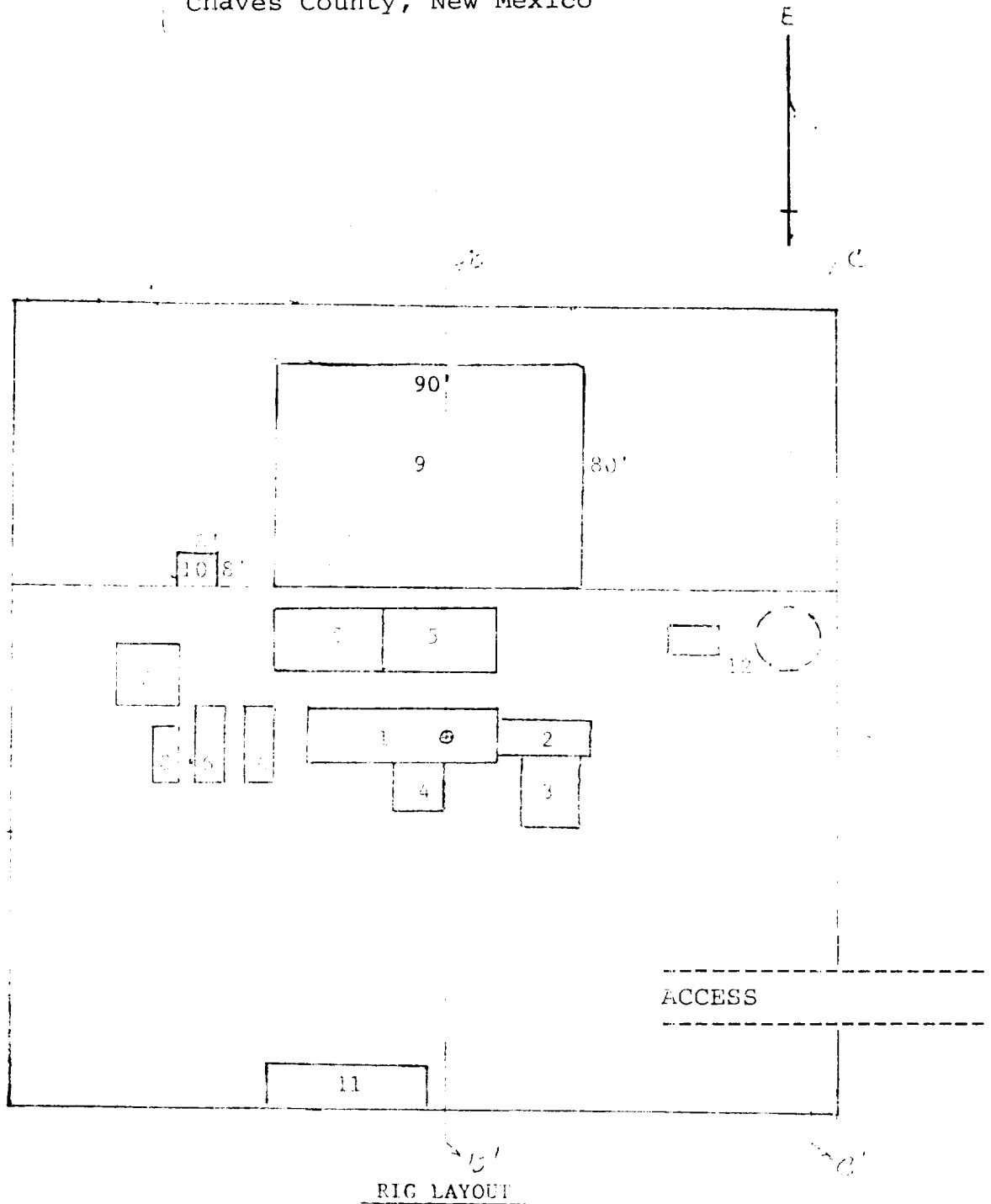
The following items supplement Form 9-331C in accordance with instructions contained in NTL-6.

1. SURFACE FORMATION: San Andres
2. ESTIMATED TOPS OF GEOLOGIC MARKERS:
 - Yeso - 750'
 - Tubb - 2300'
 - Abo - 3000'
3. ESTIMATED DEPTHS TO WATER, OIL OR GAS FORMATION:
 - Fresh water - In surface formations above 600'
 - Gas - In Abo formation below 3000'
4. PROPOSED CASING PROGRAM: See Form 9-331C
5. PRESSURE CONTROL EQUIPMENT: Blowout preventer stack will consist of at least a double-ram blowout preventer rated to 3000#WP. A sketch of the BOP is attached.
6. CIRCULATING MEDIUM:
 - 0'- 700' Lime and gel, spud mud, viscosity 32 to 34 seconds.
 - 700'- 2900 Fresh water
 - 2900'- TD Start mudding up at 2900'; viscosity 36 to 38 seconds; water loss 10 cc or less; 3-5% Diesel; 2 KCLMud additives will be used to control water loss.
7. AUXILIARY EQUIPMENT: full-opening drill string safety valve fit the drill string in use, will be kept on the rig floor at all times.

MCKAY OIL CORPORATION
Five Mile Tank Federal #3
SE/4SE/4 Sec. 17-6S-23E
Chaves County, New Mexico



McKay Oil Corporation
 Five Mile Tank Fed. #3
 SE/4SE/4 Sec. 17-6S-23E
 Chaves County, New Mexico



RIG LAYOUT

- | | |
|-----------------|---------------------------|
| 1. Substructure | 7. Water Tank |
| 2. Catwalk | 8. Light Plant |
| 3. Pipe Rack | 9. Reserve Pit |
| 4. Doghouse | 10. Trash Pit |
| 5. Mud Pits | 11. Trailer House |
| 6. Mud Pumps | 12. Production Facilities |