

NM Oil Cons. Commission  
Drawer DD  
Artesia, NM 88210UNITED STATES  
DEPARTMENT OF THE INTERIOR  
GEOLOGICAL SURVEY

## APPLICATION FOR PERMIT TO DRILL, DEEPEN, OR PLUG BACK

## 1a. TYPE OF WORK

DRILL ☒PLUG BACK ☐

## b. TYPE OF WELL

OIL  
WELL ☐GAS  
WELL ☒OTHER ☐

## 2. NAME OF OPERATOR

McKay Oil Corporation

## 3. ADDRESS OF OPERATOR

P.O. Box 2014, Roswell, New Mexico 88201

## 4. LOCATION OF WELL (Report location clearly and in accordance with any State requirements.)

At surface

1650 FSL-990 FEL  
At proposed prod. zone

## 14. DISTANCE IN MILES AND DIRECTION FROM NEAREST TOWN OR POST OFFICE\*

28 Miles Northwest of Roswell, NM

## 15. DISTANCE FROM PROPOSED\*

LOCATION TO NEAREST  
PROPERTY OR LEASE LINE, FT.  
(Also to nearest drlg. unit line, if any)

990'

## 18. DISTANCE FROM PROPOSED LOCATION\*

TO NEAREST WELL, DRILLING COMPLETED, 3/4 mile  
OR APPLIED FOR, ON THIS LEASE, FT.

## 16. NO. OF ACRES IN LEASE

2520

## 19. PROPOSED DEPTH

3,400'

17. NO. OF ACRES ASSIGNED  
TO THIS WELL

160.0

## 20. ROTARY OR CABLE TOOLS

Rotary

## 21. ELEVATIONS (Show whether DF, RT, GR, etc.)

4253 GL

## 22. APPROX. DATE WORK WILL START\*

ASAP

## 23. PROPOSED CASING AND CEMENTING PROGRAM

SIZE OF HOLE	SIZE OF CASING	WEIGHT PER FOOT	SETTING DEPTH	QUANTITY OF CEMENT
12 1/4"	8 5/8"	24.0 J-55	900'	850 cf cement circulated
7 7/8"	4 1/2"	9.5 J-55	TD	1200 cf cement including 480 cf to tie in 4 1/2" to 8 5/8" from 1500' to 800'.

We propose to drill and test the Abo formation. Approximately 900' of surface casing will be set and cemented to surface. If commercial, 4 1/2" production casing will be run and cemented with adequate cover, perforated and stimulated as needed for production.

MUD PROGRAM: See Supplemental Drilling Data Which is Attached.

BOP PROGRAM: BOP will be installed on 8 5/8" casing and tested daily.

Gas is not dedicated.

IN ABOVE SPACE DESCRIBE PROPOSED PROGRAM: If proposal is to deepen or plug back, give data on present productive zone and proposed new productive zone. If proposal is to drill or deepen directionally, give pertinent data on subsurface locations and measured and true vertical depths. Give blowout preventer program, if any.

24.

SIGNED

TITLE Landman

DATE 12-16-86

(This space for Federal or State office use)

PERMIT NO.

APPROVAL DATE

S/Phil Kirk

Area Manager

DEC 29 1986

APPROVED BY

TITLE

DATE

CONDITIONS OF APPROVAL, IF ANY:

APPROVAL OF THIS APPLICATION DOES NOT WARRANT OR  
CERTIFY THAT THE APPLICANT HOLDS LEGAL OR EQUITABLE  
TITLE TO THOSE RIGHTS IN THE SUBJECT LEASE WHICH WOULD  
ENTITLED THE APPLICANT TO CONDUCT OPERATIONS IN.

STATE OF NEW MEXICO  
ENERGY AND MINERALS DEPARTMENT

OIL CONSERVATION DIVISION  
P. O. BOX 2088  
SANTA FE, NEW MEXICO 87501

Form C-102  
Revised 10-1-70

All distances must be from the outer boundaries of the Section.

Operator McKay Oil Corporation ✓			Lease South 4 Mile Draw Federal		Well No. #7
Unit Letter I	Section 21	Township 6 South	Range 22 East	County Chaves	
Actual Footage Location of Well: 1650 feet from the South line and 990 feet from the East line					
Ground Level Elev. 4253	Producing Formation ABO		Pool W. Pecos Slope Abo	Dedicated Acreage: 160 Acres	

1. Outline the acreage dedicated to the subject well by colored pencil or ink or by signature marks on the plat below.
2. If more than one lease is dedicated to the well, outline each and identify the ownership thereof (both as to working interest and royalty).
3. If more than one lease of different ownership is dedicated to the well, have the interests of all owners been consolidated by communitization, unitization, force-pooling, etc?

☐ Yes ☐ No If answer is "yes," type of consolidation \_\_\_\_\_

If answer is "no," list the owners and tract descriptions which have actually been consolidated. (Use reverse side of this form if necessary.) \_\_\_\_\_

No allowable will be assigned to the well until all interests have been consolidated (by communitization, unitization, forced-pooling, or otherwise) or until a non-standard unit, eliminating such interests, has been approved by the Division.

CERTIFICATION

I hereby certify that the information contained herein is true and complete to the best of my knowledge and belief.

Name  
Sam L. Shackelford

Position  
Agent

Company  
McKay Oil Corp.

Date  
12-16-86

I hereby certify that the well location shown on this plat was plotted from field notes of actual surveys made by me or under my supervision, and that the same is true and correct to the best of my knowledge and belief.

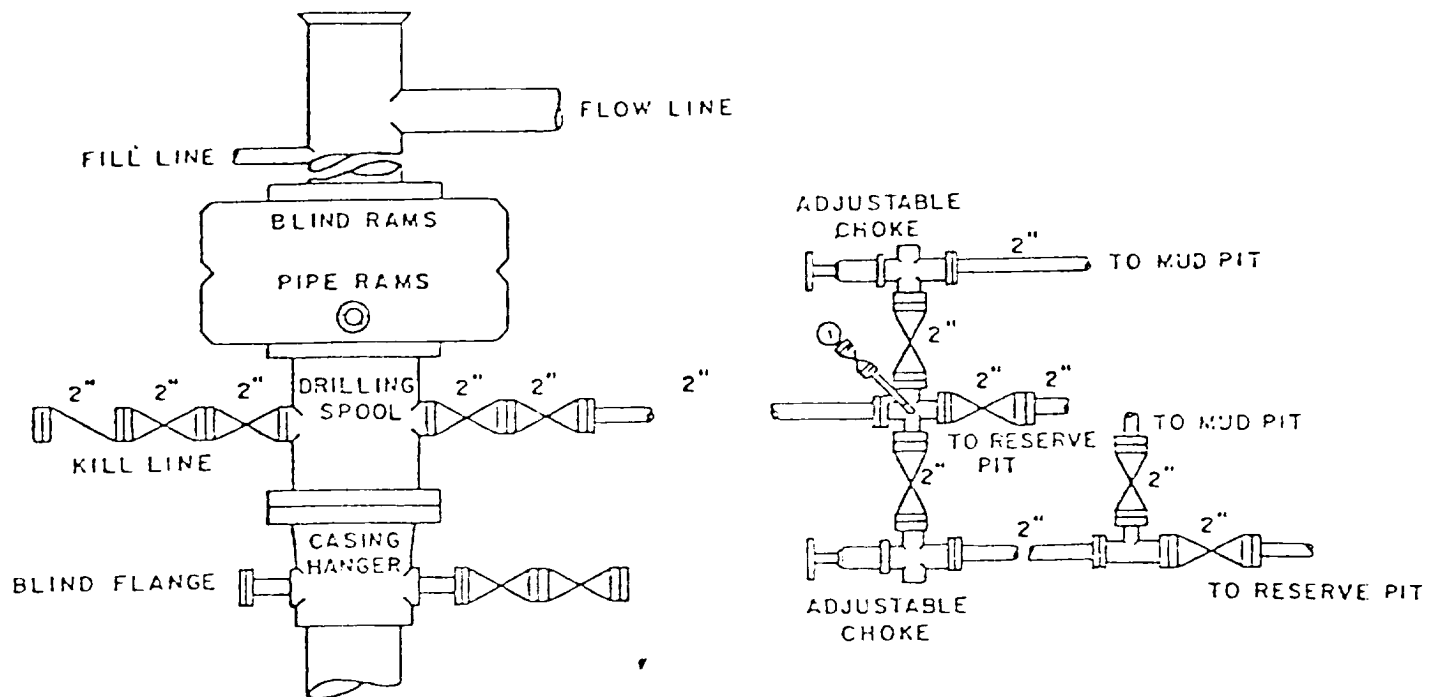
Date Surveyed  
December 15, 1986  
John D. Jacques P.E. & L.S.

Registered Professional Engineer and/or Land Surveyor

#6290  
Certificate No. PROFESSIONAL ENGINEER

0 330 660 990 1320 1650 1980 2310 2640 2970 3300 3630 3960 4290 4620 4950 5280 5610 5940 6270 6600 6930 7260 7590 7920 8250 8580 8910 9240 9570 9900

Mckay Oil Corporation  
S. 4 Mile Draw Federal #7  
NE $\frac{1}{4}$ SE $\frac{1}{4}$  Sec. 21-6S-22E  
Chaves County, New Mexico



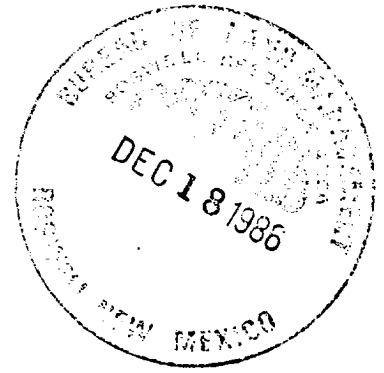
BOP DIAGRAM

3000# Working Pressure  
Rams Operated Daily

EXHIBIT D

SUPPLEMENTAL DRILLING DATA

McKAY OIL CORPORATION  
South Four Mile Draw Fed. #7  
NE1/4SE1/4 Sec. 21-6S-22E  
Chaves County, N.M.



NM 36194

The following items supplement Form 9-331C in accordance with instructions contained in NTL-6.

1. SURFACE FORMATION: San Andres
2. ESTIMATED TOPS OF GEOLOGIC MARKERS:

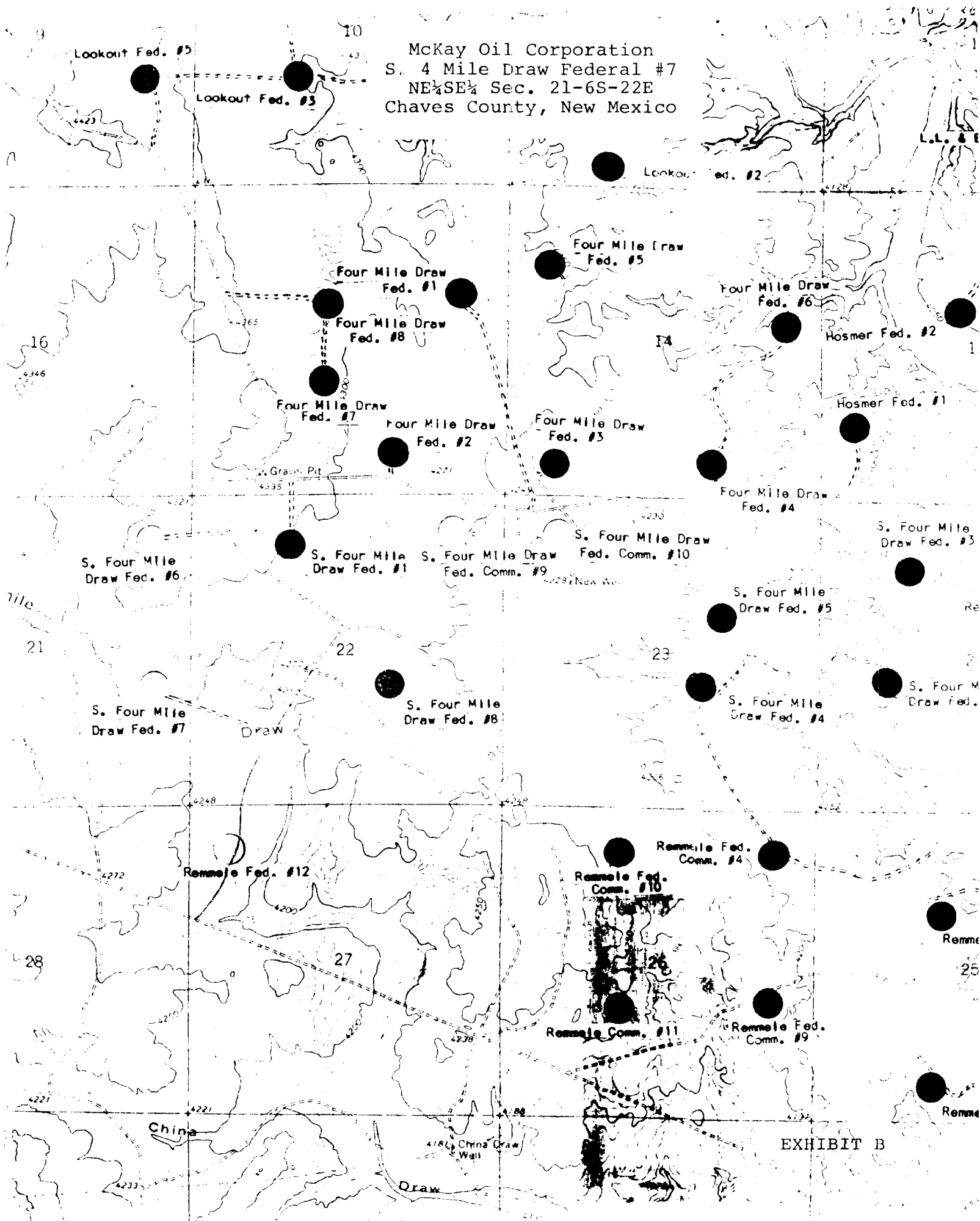
Yeso	- 805'
Tubb	- 2335'
Abo	- 3015'
3. ESTIMATED DEPTHS TO WATER, OIL OR GAS FORMATION:

Fresh water	- In surface formations above 600'
Gas	- In Abo formation below 3015'
4. PROPOSED CASING PROGRAM: See Form 9-331C
5. PRESSURE CONTROL EQUIPMENT: Blowout preventer stack will consist of at least a double-ram blowout preventer rated to 3000#WP. A sketch of the BOP is attached.
6. CIRCULATING MEDIUM:

0'- 700'	Lime and gel, spud mud, viscosity 32 to 34 seconds.
700'- 2915	Fresh water
2915'- TD	Start mudding up at 2915'; viscosity 36 to 38 seconds; water loss 10 cc or less; 3-5% Diesel; 2 KCL

Mud additives will be used to control water loss.
7. AUXILIARY EQUIPMENT: full-opening drill string safety valve fit the drill string in use, will be kept on the rig floor at all times.

McKay Oil Corporation  
S. 4 Mile Draw Federal #7  
NE $\frac{1}{4}$ SE $\frac{1}{4}$  Sec. 21-6S-22E  
Chaves County, New Mexico



McKay Oil Corporation  
 S. 4 Mile Draw Federal #7  
 NE $\frac{1}{4}$ SE $\frac{1}{4}$  Sec. 21-6S-22E  
 Chaves County, New Mexico

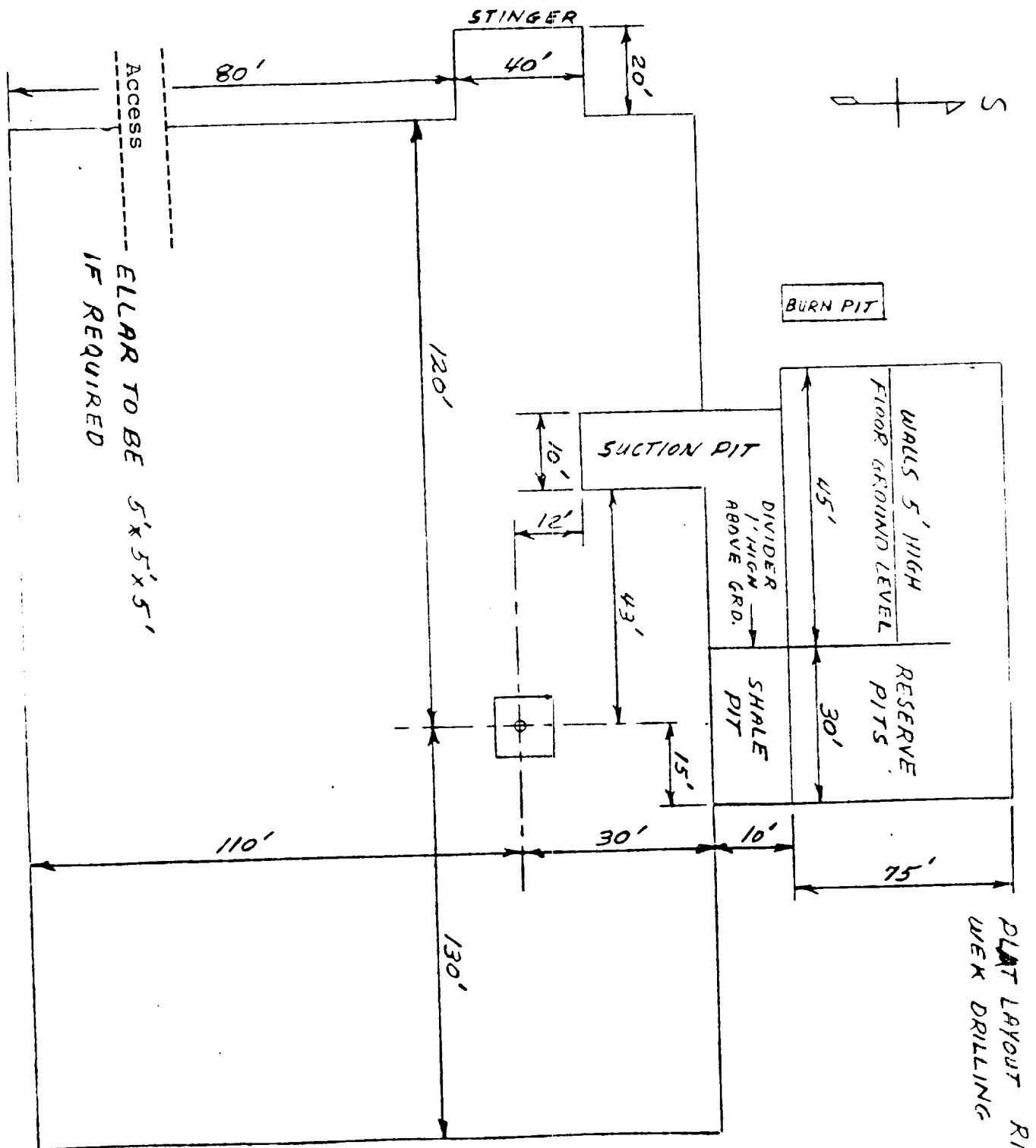


EXHIBIT C

PLAT LAYOUT RIG 3  
 WEL DRILLING