

UNITED STATES
DEPARTMENT OF THE INTERIOR
GEOLOGICAL SURVEY88210 (See instructions on
reverse side)

30-005-62451

APPLICATION FOR PERMIT TO DRILL, DEEPEN, OR PLUG BACK

1a. TYPE OF WORK

DRILL ☒DEEPEN ☐PLUG BACK ☐

b. TYPE OF WELL

OIL
WELL ☐GAS
WELL ☒OTHER ☐SINGLE
ZONE ☐MULTIPLE
ZONE ☐

2. NAME OF OPERATOR

McClellan Oil Corporation

3. ADDRESS OF OPERATOR

P.O. Drawer 730, Roswell, NM 88202

4. LOCATION OF WELL (Report location clearly and in accordance with any State requirements.)*

At surface

1980' FSL & 660' FEL

At proposed prod. zone

14. DISTANCE IN MILES AND DIRECTION FROM NEAREST TOWN OR POST OFFICE*

14 miles east of Roswell, N.M.

15. DISTANCE FROM PROPOSED*

LOCATION TO NEAREST
PROPERTY OR LEASE LINE, FT.

(Also to nearest drg. unit line, if any)

660'

18. DISTANCE FROM PROPOSED LOCATION*

TO NEAREST WELL, DRILLING, COMPLETED,
OR APPLIED FOR, ON THIS LEASE, FT.

2113'

21. ELEVATIONS (Show whether DF, RT, GR, etc.)

3590' G.L.

23.

PROPOSED CASING AND CEMENTING PROGRAM

SIZE OF HOLE	SIZE OF CASING	WEIGHT PER FOOT	SETTING DEPTH	QUANTITY OF CEMENT
12-1/4"	8-5/8"	24	900'	500 sx circulate
7-7/8"	4-1/2"	10.5	4350'	350 sx See Drilling Steps

Propose to drill to approximately 4350' to test the Abo formation. If commercial production is indicated, will run production casing and attempt completion.

Estimated formation tops: San Andres - 506' Tubb - 3086'
Glorieta - 1595' Abo - 3832'

Gas is dedicated.

IN ABOVE SPACE DESCRIBE PROPOSED PROGRAM: If proposal is to deepen or plug back, give data on present productive zone and proposed new productive zone. If proposal is to drill or deepen directionally, give pertinent data on subsurface locations and measured and true vertical depths. Give blowout preventer program, if any.

SIGNED

Mark McClellan

TITLE

Geologist

DATE

2/2/87

(This space for Federal or State office use)

PERMIT NO.

APPROVAL DATE

APPROVED BY

S/Phil Kirk

TITLE

Area Manager

DATE

2-24-87

CONDITIONS OF APPROVAL, IF ANY:

APPROVAL OF THIS APPLICATION DOES NOT WARRANT OR
CERTIFY THAT THE APPLICANT HOLDS LEGAL OR EQUITABLE
TITLE TO THOSE RIGHTS IN THE SUBJECT LEASE WHICH WOULD
ENTITLE THE APPLICANT TO CONDUCT OPERATIONS THEREON.

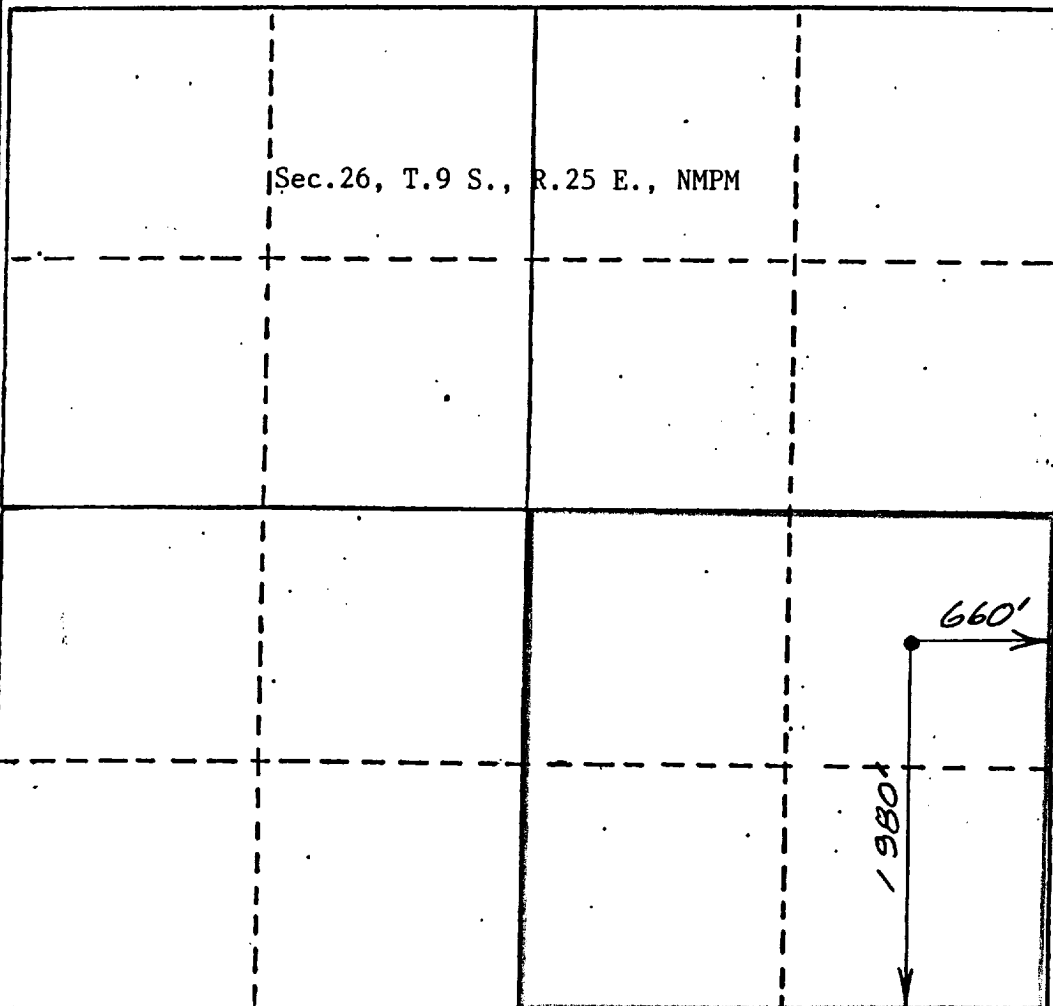
All distances must be from the outer boundaries of the Section.

Operator McClellan Oil Corp. ✓			Lease M.M. Federal		Well No. #6
Unit Letter I	Section 26	Township 9 South	Range 25 East	County Chaves	
Actual Postage Location of Well: 1980 South 660 East line					
Ground Level Elev. 3590	Producing Formation Abo		Pool S. Pecos Slope Abo		Dedicated Acreage 160 Acres

1. Outline the acreage dedicated to the subject well by colored pencil or hachure marks on the plat below.
2. If more than one lease is dedicated to the well, outline each and identify the ownership thereof (both as to working interest and royalty).
3. If more than one lease of different ownership is dedicated to the well, have the interests of all owners been consolidated by communitization, unitization, force-pooling, etc?
☐ Yes ☐ No If answer is "yes," type of consolidation _____

If answer is "no," list the owners and tract descriptions which have actually been consolidated. (Use reverse side of this form if necessary.) _____

No allowable will be assigned to the well until all interests have been consolidated (by communitization, unitization, forced-pooling, or otherwise) or until a non-standard unit, eliminating such interests, has been approved by the Division.



CERTIFICATION

I hereby certify that the information contained herein is true and complete to the best of my knowledge and belief.

Mark McClellan

Name

Mark McClellan

Position

Geologist

Company

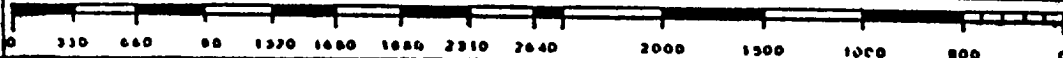
McClellan Oil Corp.

Date

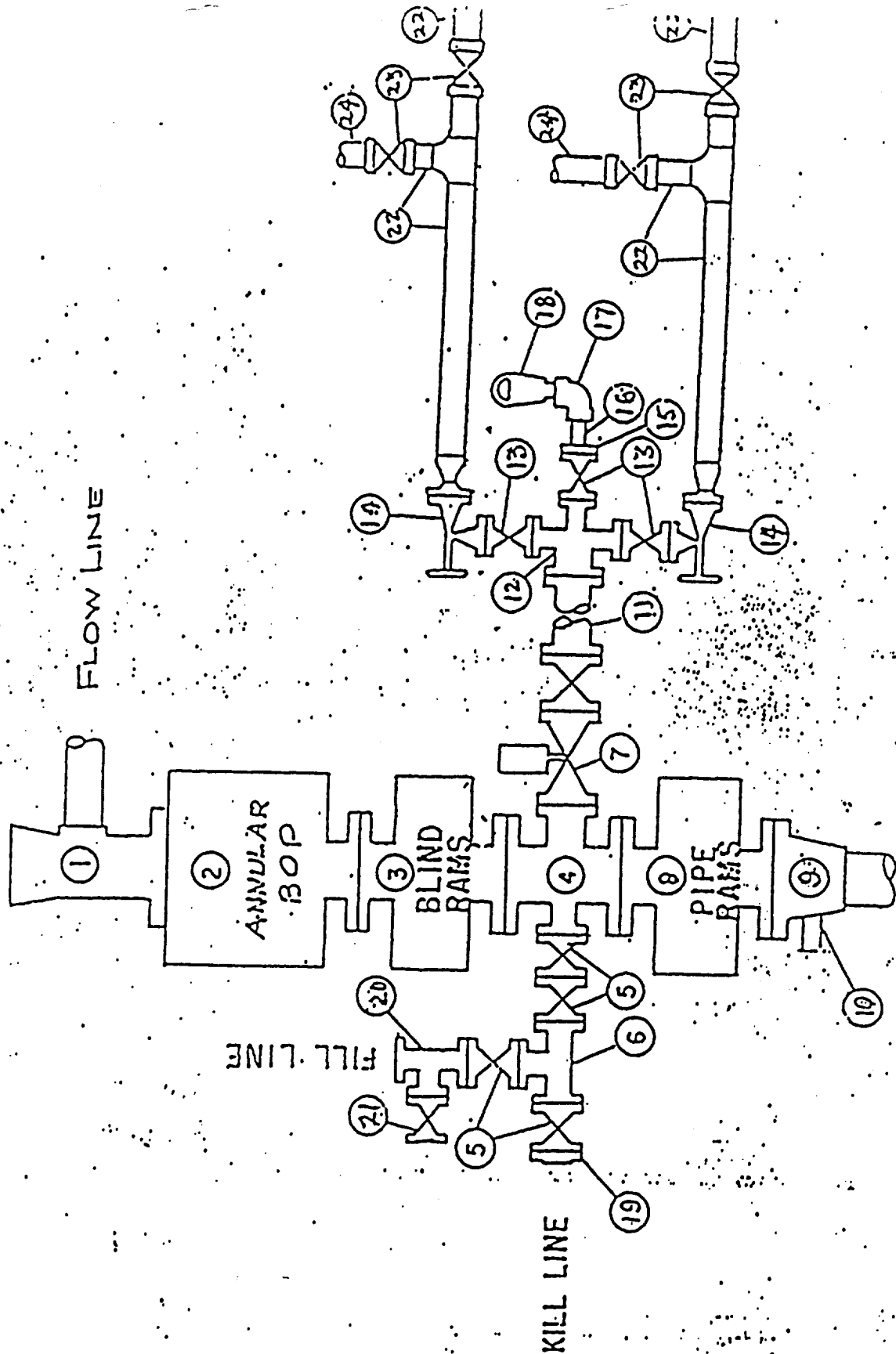
February 3, 1987

I hereby certify that the well location shown on this plat was plotted from field notes of actual surveys made by me or under my supervision, and that the same is true and correct to the best of my knowledge and belief.

JOHN D. JAQUES
NEW MEXICO
January 23, 1987
Registered Professional Engineer
and/or Land Surveyor
John D. Jaques, P.E. & L.S.
Certificate No. 6290



BLUETOOTH PREVENTION SPECIFICATION



SURFACE USE PLAN EXHIBIT "E"
MM Fed. No. 6
SE 1/4 of Sec. 26-T9S-R25E
Chaves County, N.M.

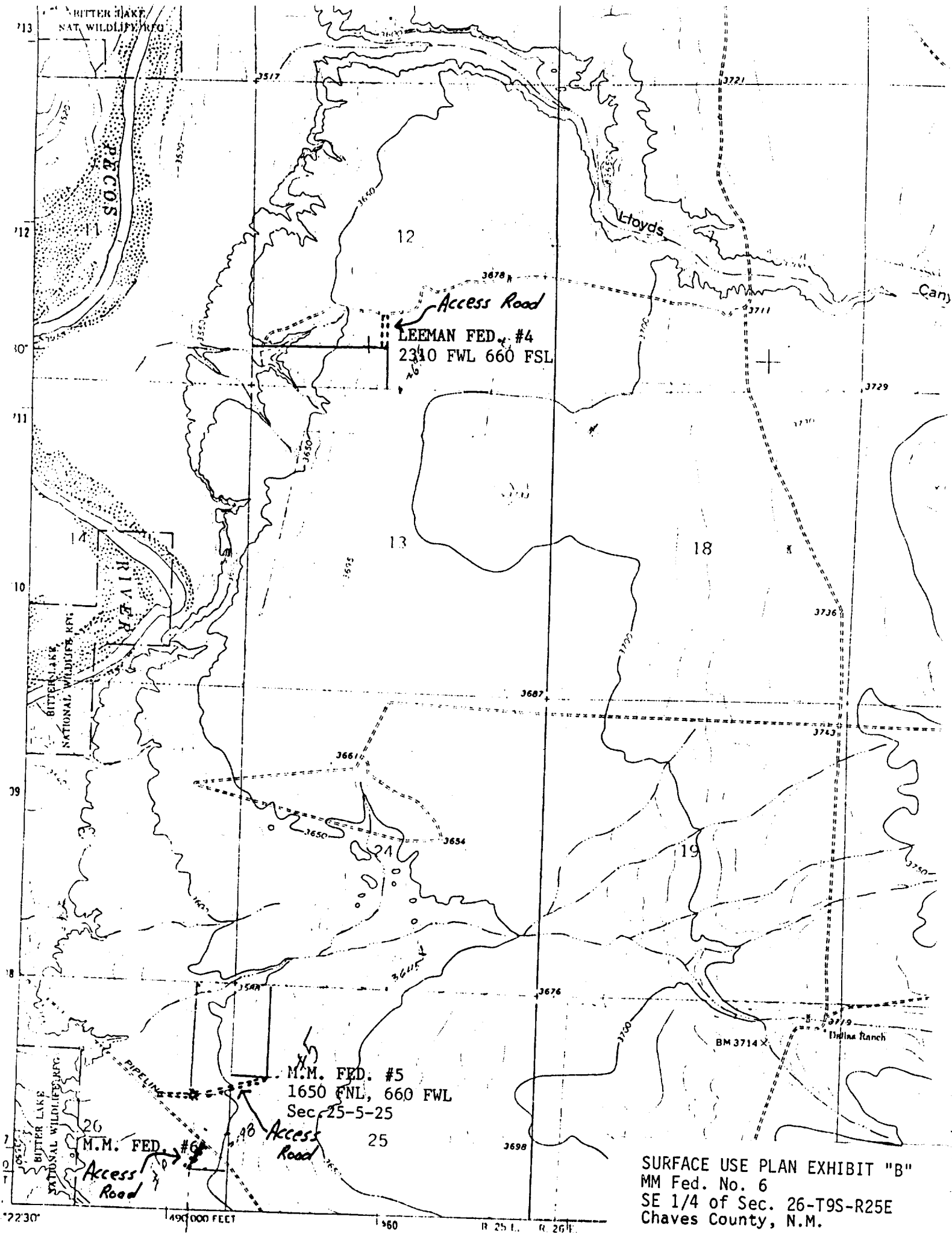
MM Fed. No. 6
McClellan Oil Corp.

REQUIREMENTS
(NTL-6)

1. Location: 1980' FSL & 660' FEL of Section 26-T9S-R25E
2. Elevation: 3590' G.L.
3. Geologic name of surface formation: See archaeological report
4. Type of drilling rig and associated equipment: Rotary
5. Proposed drilling depth and objective formation: 4350' - Abo
6. Estimated tops of geologic markers:

Yates	<u> </u>	San Andres	<u>506'</u>	Abo	<u>3832'</u>
7-Rivers	<u> </u>	Glorieta	<u>1595'</u>	Wolfcamp	<u> </u>
Queen	<u> </u>	Tubb	<u>3086'</u>		
7. Estimated depths of any oil, water, or gas: Possible gas from 3832' to 4350'
- 8-9. Proposed casing program:

<u>8-5/8"</u>	@	<u>900'</u>	Grade	<u>J-55</u>	Wt.	<u>24 lb.</u>	Type Cement	<u>Class "C"</u>
<u>4-1/2"</u>	@	<u>4350'</u>	Grade	<u>J-55</u>	Wt.	<u>10.5 lb.</u>	Type Cement	<u>Class "C"</u>
10. Specifications for pressure control equipment and testing procedures:
Schaeffer type E 10" series 900 hydraulic BOP
11. Type and characteristics of drilling fluids: Drill to top of Abo with native mud. Mud up 100' above Abo with salt base gel, 45 visc., 9.5 lb/gal weight & 15 cc water loss.
12. Testing, logging, and coring programs: No D.S.T.'s or coring is anticipated. Will run-CNL-LDT, DLL Gamma Ray Logs.
13. Anticipated abnormal pressures or temperature: None
14. Anticipated commencement and completion date:
April 15, 1987 - April 30, 1987



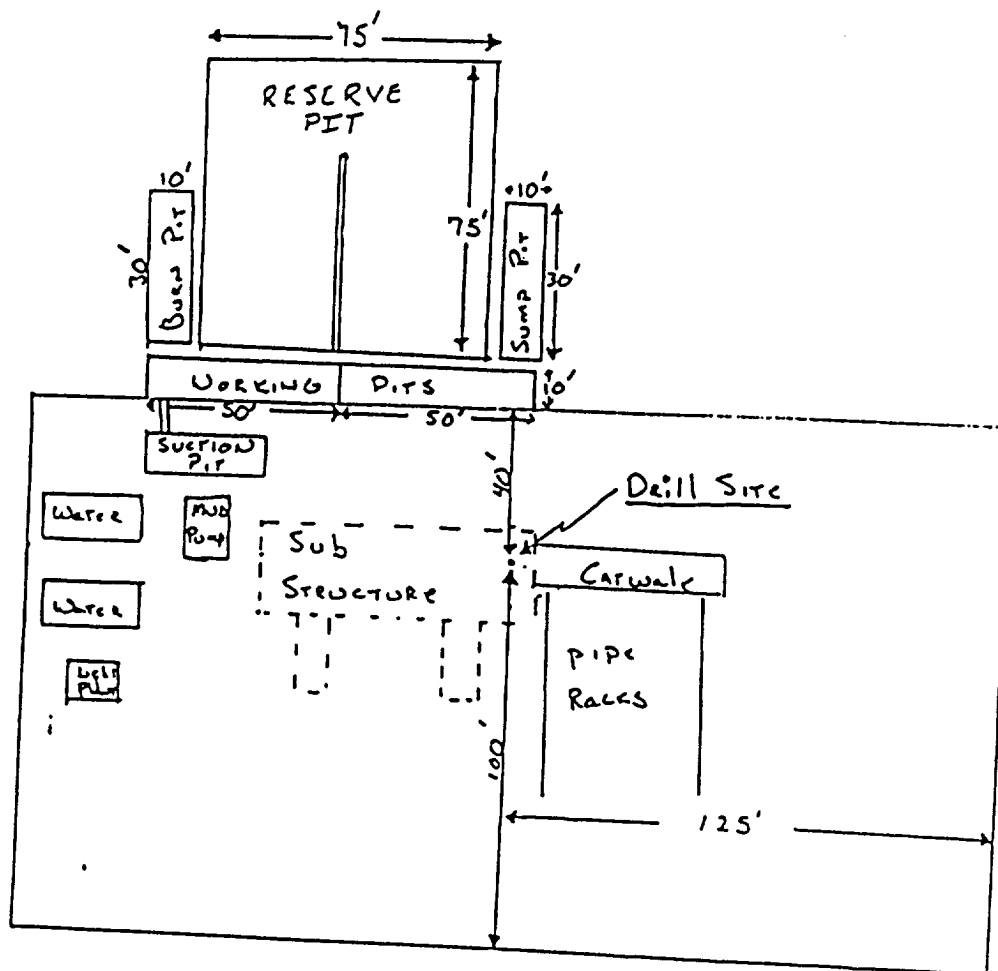
SURFACE USE PLAN EXHIBIT "B"
MM Fed. No. 6
SE 1/4 of Sec. 26-T9S-R25E
Chaves County, N.M.

McCLELLAN OIL CORPORATION
SUGGESTED PAD DIMENSIONS

Reserve Pits 4 ft. deep, plastic lined

Working pits 5 ft. deep

No cellar



Scale 1" = 50'