

NM Oil Cons. Commission

Drawer DD

Artesia, NM 88210

SUBMIT IN TRIPLICATE*

(Other instructions on
reverse side)Form approved,
Budget Bureau No. 42-R1425.UNITED STATES
DEPARTMENT OF THE INTERIOR
GEOLOGICAL SURVEY30-005-62465
5. LEASE DESIGNATION AND SERIAL NO.
NM-8431

APPLICATION FOR PERMIT TO DRILL, DEEPEN, OR PLUG BACK

1a. TYPE OF WORK
DRILL ☒ DEEPEN ☐ PLUG BACK ☐b. TYPE OF WELL
OIL WELL ☐ GAS WELL ☒ OTHER ☐
SINGLE ZONE ☐ MULTIPLE ZONE ☐2. NAME OF OPERATOR
McClellan Oil Corporation3. ADDRESS OF OPERATOR
P.O. Drawer 730, Roswell, New Mexico4. LOCATION OF WELL (Report location clearly and in accordance with any State requirements.)*
At surface

660' FSL & 1980 FEL

At proposed prod. zone

14. DISTANCE IN MILES AND DIRECTION FROM NEAREST TOWN OR POST OFFICE*

9 miles northeast of Roswell, N.M.

15. DISTANCE FROM PROPOSED*
LOCATION TO NEAREST
PROPERTY OR LEASE LINE, FT.
(Also to nearest drg. unit line, if any)

660'

16. NO. OF ACRES IN LEASE
1514.6818. DISTANCE FROM PROPOSED LOCATION*
TO NEAREST WELL, DRILLING, COMPLETED,
OR APPLIED FOR, ON THIS LEASE, FT.

7,725'

19. PROPOSED DEPTH
4650

21. ELEVATIONS (Show whether DF, RT, GR, etc.)

3789'

23.

PROPOSED CASING AND CEMENTING PROGRAM

SIZE OF HOLE	SIZE OF CASING	WEIGHT PER FOOT	SETTING DEPTH	QUANTITY OF CEMENT
12 1/4"	8 5/8"	24 lb.	900'	350 sx circulated
7 7/8"	4 1/2"	10.5 lb.	4650'	350 sx

Propose to drill to approximately 4650' to test the Abo formation. If production is indicated, will run production casing and attempt completion.

Estimated Formation Tops: San Andres - 746 Tubb - 3358'
Glorieta - 1870' Abo - 4119'

Gas is dedicated

IN ABOVE SPACE DESCRIBE PROPOSED PROGRAM: If proposal is to deepen or plug back, give data on present productive zone and proposed new productive zone. If proposal is to drill or deepen directionally, give pertinent data on subsurface locations and measured and true vertical depths. Give blowout preventer program, if any.

24.

SIGNED Mark McClellan TITLE Geologist DATE February 3, 1987

(This space for Federal or State office use)

PERMIT NO. _____

APPROVAL DATE _____

APPROVED BY S/Phil KirkTITLE Area ManagerDATE MAR 5 1987

CONDITIONS OF APPROVAL, IF ANY:

APPROVAL OF THIS APPLICATION DOES NOT WARRANT OR
CERTIFY THAT THE APPLICANT HOLDS LEGAL OR EQUITABLE
TITLE TO THOSE RIGHTS IN THE SUBJECT LEASE WHICH WOULD
*See Instructions On Reverse Side



All distances must be from the outer boundaries of the Section.

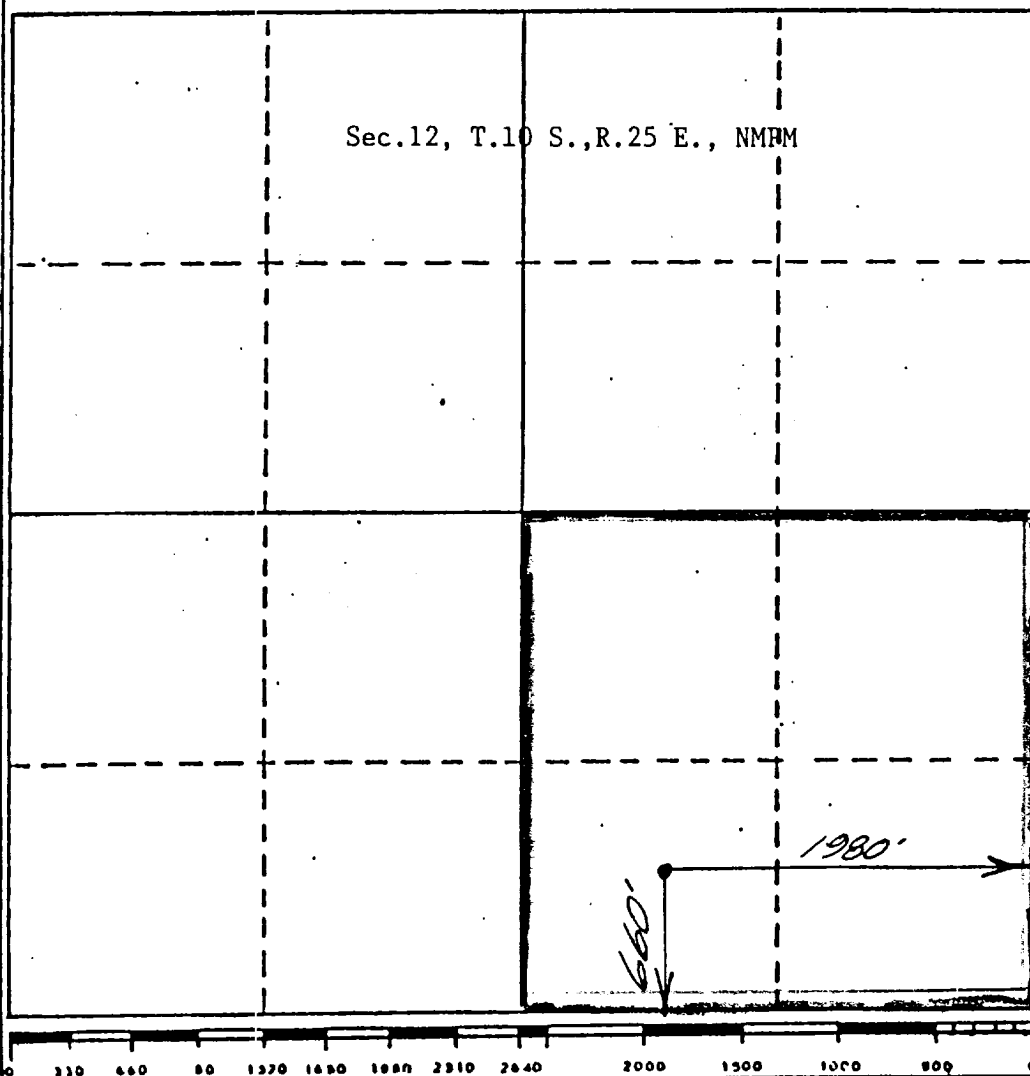
Operator McClellan Oil Corp. ✓		Lease Penjack Federal		Well No. 2
Well Letter 0	Section 12	Township 10 South	Range 25 East	County Chaves
Actual Postage Location of Well: 1980 feet from the East line and 660 feet from the South line				
Ground Level Elev. 3789	Producing Formation Abo	Pool S Pecos Slope Abo	Dedicated Acres: 160 A	

1. Outline the acreage dedicated to the subject well by colored pencil or hatchure marks on the plat below.
2. If more than one lease is dedicated to the well, outline each and identify the ownership thereof (both as to work interest and royalty).
3. If more than one lease of different ownership is dedicated to the well, have the interests of all owners been consolidated by communitization, unitization, force-pooling, etc?

☐ Yes ☐ No If answer is "yes;" type of consolidation _____

If answer is "no;" list the owners and tract descriptions which have actually been consolidated. (Use reverse side this form if necessary.) _____

No allowable will be assigned to the well until all interests have been consolidated (by communitization, unitization, forced-pooling, or otherwise) or until a non-standard unit, eliminating such interests, has been approved by the Division.



CERTIFICATION

I hereby certify that the information contained herein is true and complete to best of my knowledge and belief.

Mark McClellan

Name

Mark McClellan

Position

Geologist

Company

McClellan Oil Corp.

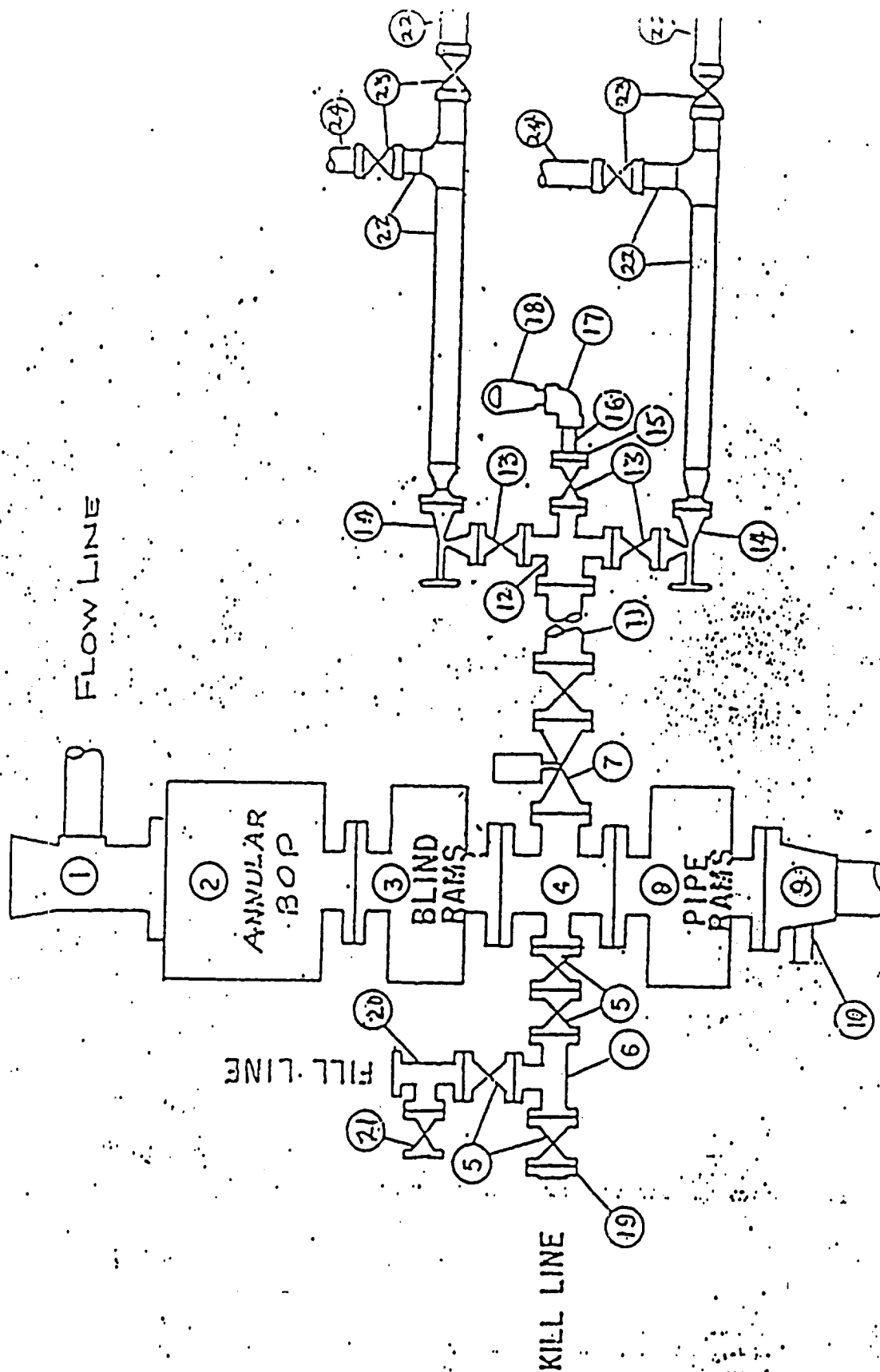
Date

February 3, 1987

I hereby certify that the well location shown on this plat was plotted from field notes of actual surveys made by me under my supervision, and that the same is true and correct to the best of my knowledge and belief.

John D. Jaquess
Date Surveyed
January 23, 1987
Registered Professional Engineer
and/or Land Surveyor
John D. Jaquess
Certificate No. 6290

BLUETOOTH PREVENTER SPECIFICATION



Penjack Fed. No. 2

McClellan Oil Corp.

REQUIREMENTS
(NTL-6)

1. Location: 660' FSL & 1980' FEL of Section 12-T10S-R25E
2. Elevation: 3789' G.L.
3. Geologic name of surface formation: See archaeological report
4. Type of drilling rig and associated equipment: Rotary
5. Proposed drilling depth and objective formation: 4650' - Abo
6. Estimated tops of geologic markers:

Yates	<u> </u>	San Andres	<u>746'</u>	Abo	<u>4119'</u>
7-Rivers	<u> </u>	Glorieta	<u>1870'</u>	Wolfcamp	<u> </u>
Queen	<u> </u>	Tubb	<u>3358'</u>		
7. Estimated depths of any oil, water, or gas: Possible gas from 4119' to 4650'
- 8-9. Proposed casing program:

<u>8-5/8" @ 900'</u>	<u>Grade J-55</u>	<u>Wt. 24 lb.</u>	<u>Type Cement Class "C"</u>
<u>4-1/2" @ 4650'</u>	<u>Grade J-55</u>	<u>Wt. 10.5 lb.</u>	<u>Type Cement Class "C"</u>
10. Specifications for pressure control equipment and testing procedures:
Schaeffer type E 10" series 900 hydraulic BOP
11. Type and characteristics of drilling fluids: Drill to top of Abo with native mud. Mud up 100' above Abo with salt base gel, 45 visc., 9.5 lb/gal weight & 15 cc water loss.
12. Testing, logging, and coring programs: No D.S.T.'s or coring is anticipated. Will run CNL-LDT, DLL Gamma Ray Logs.
13. Anticipated abnormal pressures or temperature: None
14. Anticipated commencement and completion date:
May 1, 1987 to May 15, 1987

R 25 F R 26 F
5 20' 62
30 3750 2
3620
M.M. FED. #4
660 FSL, 1980 FEL,
Sec. 25-5-25

3667 3676 3769
McCREA FEE #2
330 FNL, 1650 FEL
Sec. 1-10-25
Windmill 3675
3696
3700
3722
3714
3770
5
77.6
3770
12
CA Triple
3650
3660
3722
13
3722
3750
3780
BM 3798
7
8
3770
3800
18

Access Road
PENJACK FED. #2
1980 FEL, 660 FSL
SEC. 12-10-25

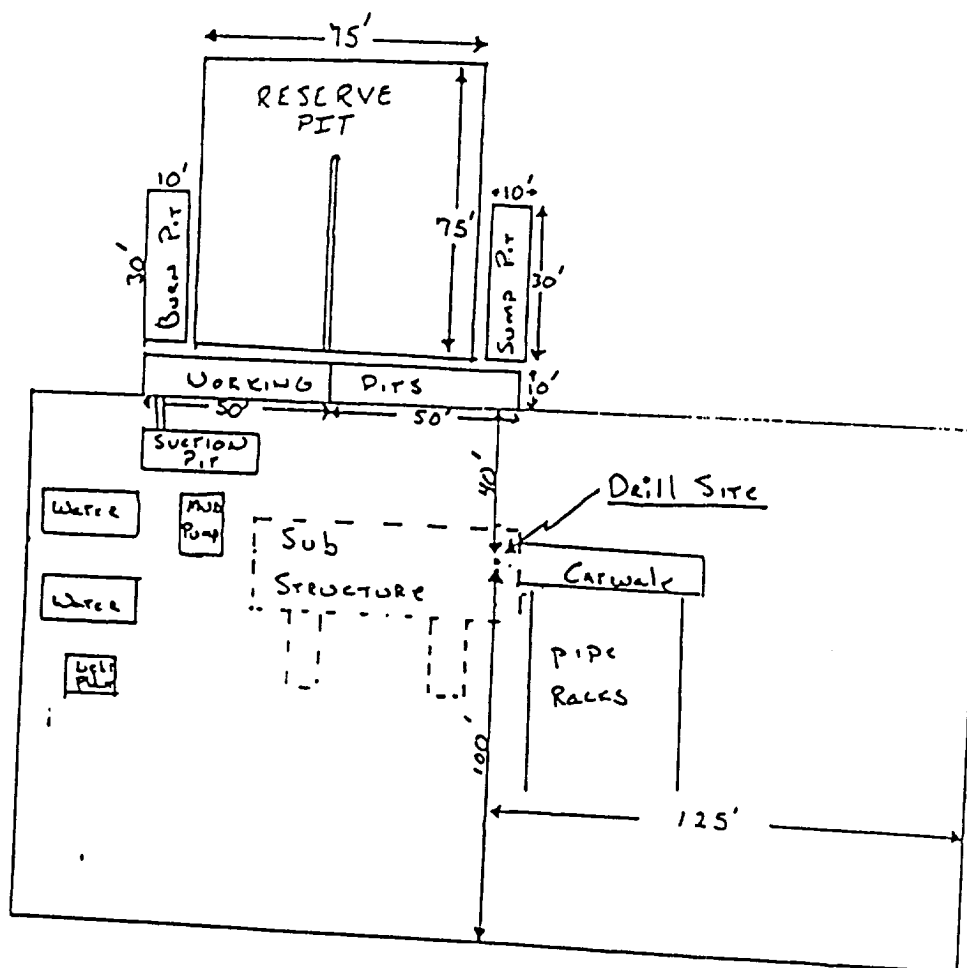
SURFACE USE PLAN EXHIBIT "B"
Penjack Fed. No. 2
SE 1/4 Sec. 12-T10S-R25E
Chaves County, N.M.

McCLELLAN OIL CORPORATION
SUGGESTED PAD DIMENSIONS

Reserve Pits 4 ft. deep, plastic lined

Working pits 5 ft. deep

No cellar



Scale 1" = 50'