

UNITED STATES
DEPARTMENT OF THE INTERIOR
GEOLOGICAL SURVEY

30-005-62480

5. LEASE DESIGNATION AND SERIAL NO.

NM-25862

6. IF INDIAN, ALLOTTEE OR TRIBE NAME

7. UNIT AGREEMENT NAME

8. FARM OR LEASE NAME

Toles Federal

9. WELL NO.

4

10. FIELD AND POOL, OR WILDCAT

W Pecos Slope Abo

11. SEC., T., R., M., OR BLK.
AND SURVEY OR AREA

Sec. 15-T8S-R23E

12. COUNTY OR PARISH 13. STATE

Chaves

New Mexico

1a. TYPE OF WORK

DRILL ☒DEEPEN ☐PLUG BACK ☐

b. TYPE OF WELL

OIL
WELL ☐GAS
WELL ☒

OTHER

2. NAME OF OPERATOR

McClellan Oil Corporation

3. ADDRESS OF OPERATOR

P. O. Dr. 730, Roswell, New Mexico 88202

4. LOCATION OF WELL (Report location clearly and in accordance with any State requirements)

At surface

2220' FSL & 815' FEL

At proposed prod. zone

14. DISTANCE IN MILES AND DIRECTION FROM NEAREST TOWN OR POST OFFICE*

16 miles northwest of Roswell, NM

15. DISTANCE FROM PROPOSED*

LOCATION TO NEAREST
PROPERTY OR LEASE LINE, FT.
(Also to nearest drlg. unit line, if any)

815'

16. NO. OF ACRES IN LEASE

2560

17. NO. OF ACRES ASSIGNED
TO THIS WELL

160

18. DISTANCE FROM PROPOSED LOCATION*
TO NEAREST WELL, DRILLING, COMPLETED,
OR APPLIED FOR, ON THIS LEASE, FT.

2900'

19. PROPOSED DEPTH

3500'

20. ROTARY OR CABLE TOOLS

Rotary

21. ELEVATIONS (Show whether DF, RT, GR, etc.)

3982' GL

22. APPROX. DATE WORK WILL START*

May 1, 1987

23.

PROPOSED CASING AND CEMENTING PROGRAM

SIZE OF HOLE	SIZE OF CASING	WEIGHT PER FOOT	SETTING DEPTH	QUANTITY OF CEMENT
12 1/4"	8 5/8"	23 #	800'	500 Sx class "C" circulated
7 7/8"	4 1/2"	10.5 #	3500'	350 Sx class "C"

Mud Program:

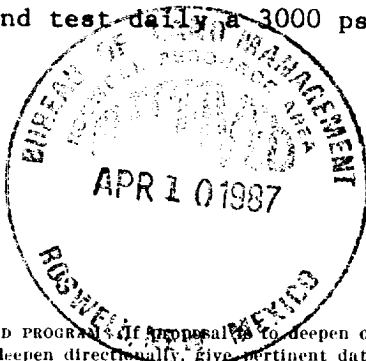
0' - 2800' Drill with native mud.

2800' - 3500' Mud up with salt base gel, 45 visc., 9.5 lb/gal wt., 15 cc water loss.

BOP Specification:

Will install and test daily a 3000 psi Schaeffer type E 10" series 900 hydraulic BOP.

Gas not dedicated.



IN ABOVE SPACE DESCRIBE PROPOSED PROGRAM. If proposal is to deepen or plug back, give data on present productive zone and proposed new productive zone. If proposal is to drill or deepen directionally, give pertinent data on subsurface locations and measured and true vertical depths. Give blowout preventer program, if any.

24.

Agent for:

SIGNED

Levi Deike

TITLE

McClellan Oil Corp.

DATE

April 9, 1987

(This space for Federal or State office use)

PERMIT NO.

APPROVAL DATE

APPROVED BY

S/Levi Deike, Acting

TITLE

Area Manager

DATE

APR 21 1987

CONDITIONS OF APPROVAL, IF ANY:

APPROVAL OF THIS APPLICATION DOES NOT WARRANT OR
CERTIFY THAT THE APPLICANT HOLDS LEGAL OR EQUITABLE
TITLE TO THOSE RIGHTS IN THE SUBJECT LEASE WHICH WOULD
ENTITLE THE APPLICANT TO CONDUCT OPERATIONS THEREON.

All distances must be from the outer boundaries of the Section.

Operator McClellan Oil Corp.		Lease Toles Federal		Well No. #4
Unit Letter I	Section 15	Township 8 South	Range 23 East	County Chaves
Actual Footage Location of Well: 2220 feet from the South line and 815 feet from the East line				
Ground Level Elev. 3892	Producing Formation Abo	Pool W Pecos Slope Abo	Dedicated Acres 160	

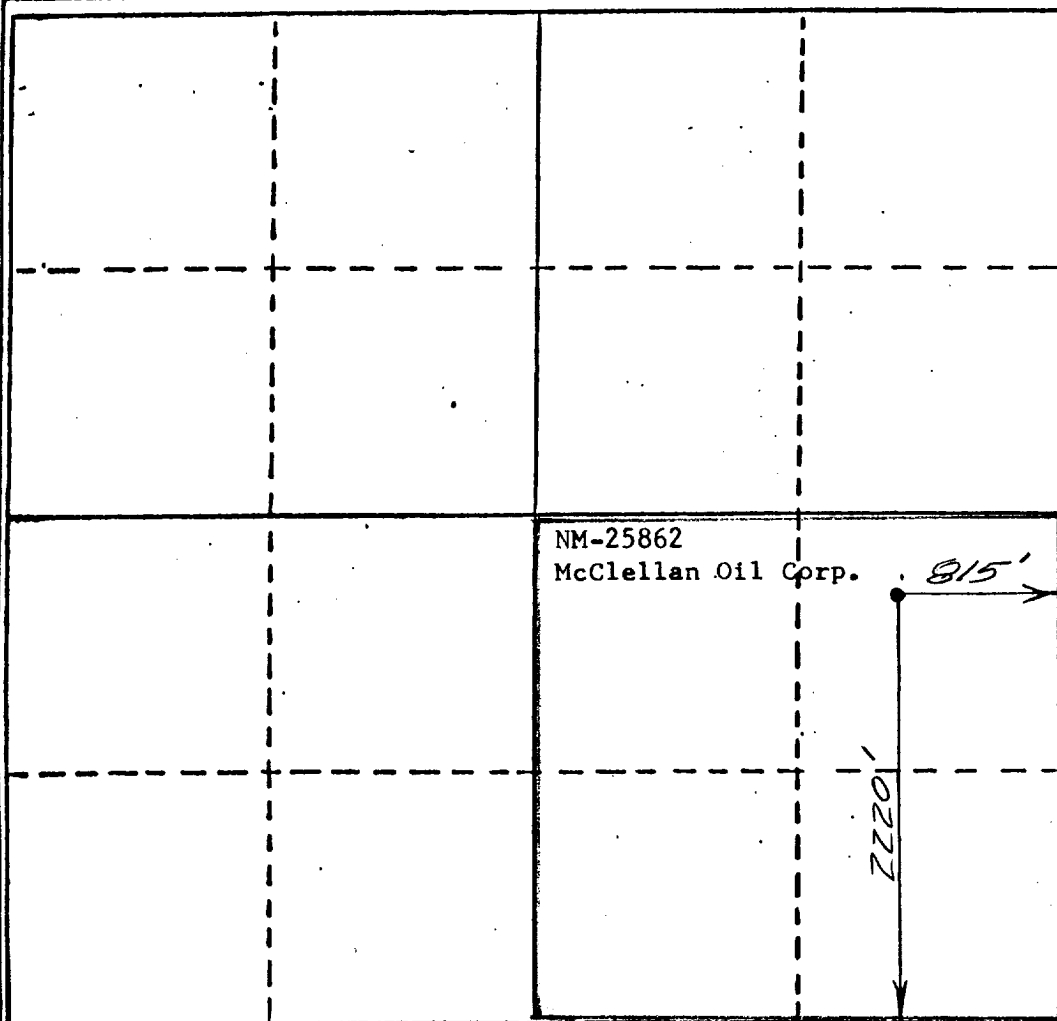
1. Outline the acreage dedicated to the subject well by colored pencil or hatchure marks on the plat below.
 2. If more than one lease is dedicated to the well, outline each and identify the ownership thereof (both as to working interest and royalty).
 3. If more than one lease of different ownership is dedicated to the well, have the interests of all owners been consolidated by communitization, unitization, forced-pooling, etc?
- ☐ Yes ☐ No If answer is "yes," type of consolidation _____

RECEIVED BY
MAY -8 1987
ARTESIA, OFFICE

APR 10 1987

If answer is "no," list the owners and tract descriptions which have actually been consolidated. (Use reverse side of this form if necessary.) _____

No allowable will be assigned to the well until all interests have been consolidated (by communitization, unitization, forced-pooling, or otherwise) or until a non-standard unit, eliminating such interests, has been approved by the Division.



CERTIFICATION

I hereby certify that the information contained herein is true and complete to the best of my knowledge and belief.

George R. Smith

Name
George R. Smith

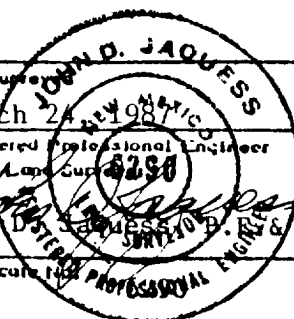
Position
Agent for:

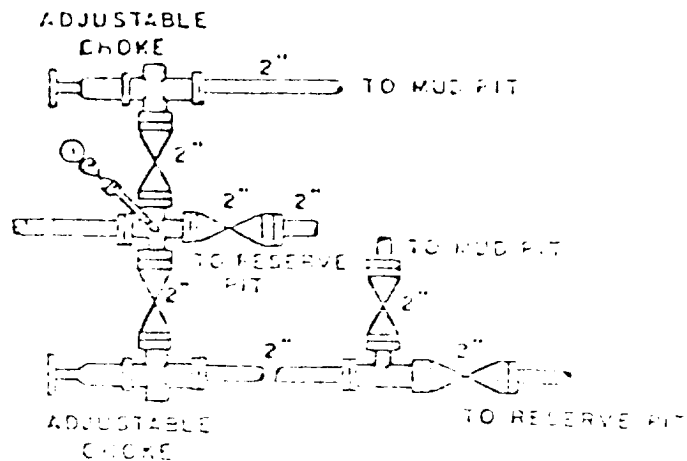
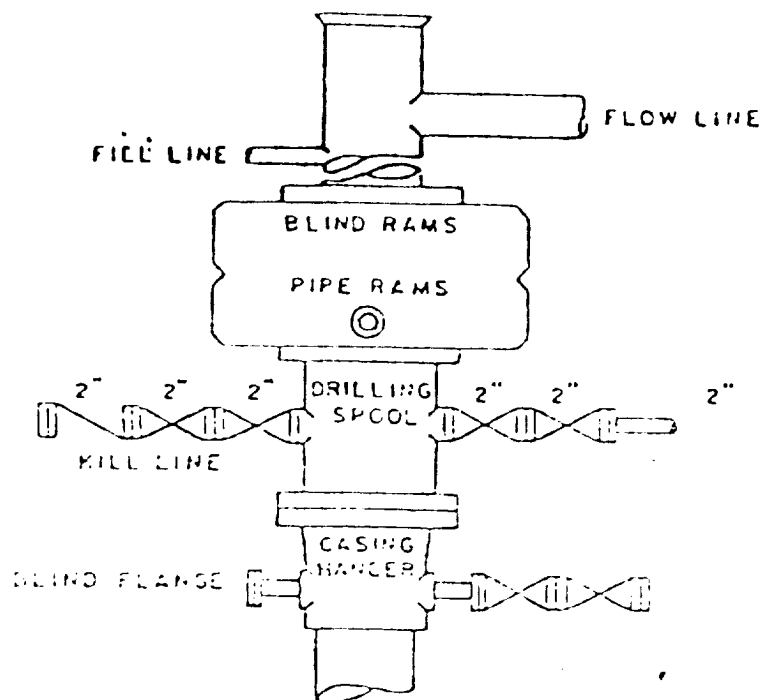
Company
McClellan Oil Corp.

Date
April 9, 1987

I hereby certify that the well location shown on this plat was plotted from field notes of actual surveys made by me or under my supervision, and that the same is true and correct to the best of my knowledge and belief.

Date Surveyed
March 24, 1987
Registered Professional Engineer
and/or Land Surveyor
John D. Jaquess
C.E. 4298
L.S.





BOP DIAGRAM

3000# Working Pressure
Rams Operated Daily

EXHIBIT L

GRANDE DRILLING CORP.
ROSWELL, N. M.

EXHIBIT "E"
McCLELLAN OIL CORPORATION
Toles Federal, Well No. 4
BOP Specifications

APPLICATION FOR DRILLING

McCLELLAN OIL CORPORATION
Toles Federal, Well No. 4
2220' FSL & 815' FEL, Sec. 15-T8S-R23E
Chaves County, New Mexico
Lease No.: NM-25862
(Development Well)



In conjunction with Form 9-331C, Application for Permit to Drill subject well, McClellan Oil Corporation submits the following items of pertinent information in accordance with BLM requirements:

1. The geologic surface formation is recent Permian with quaternary alluvium and other surficial deposits.
2. The estimated tops of geologic markers are as follows:

Glorieta	825'	Abo	2915'
Yeso	1000'	T. D.	3500'
3. The estimated depth at which anticipated water, oil or gas formations are expected to be encountered:

Water: Random fresh water sands from surface to 300'+/-.

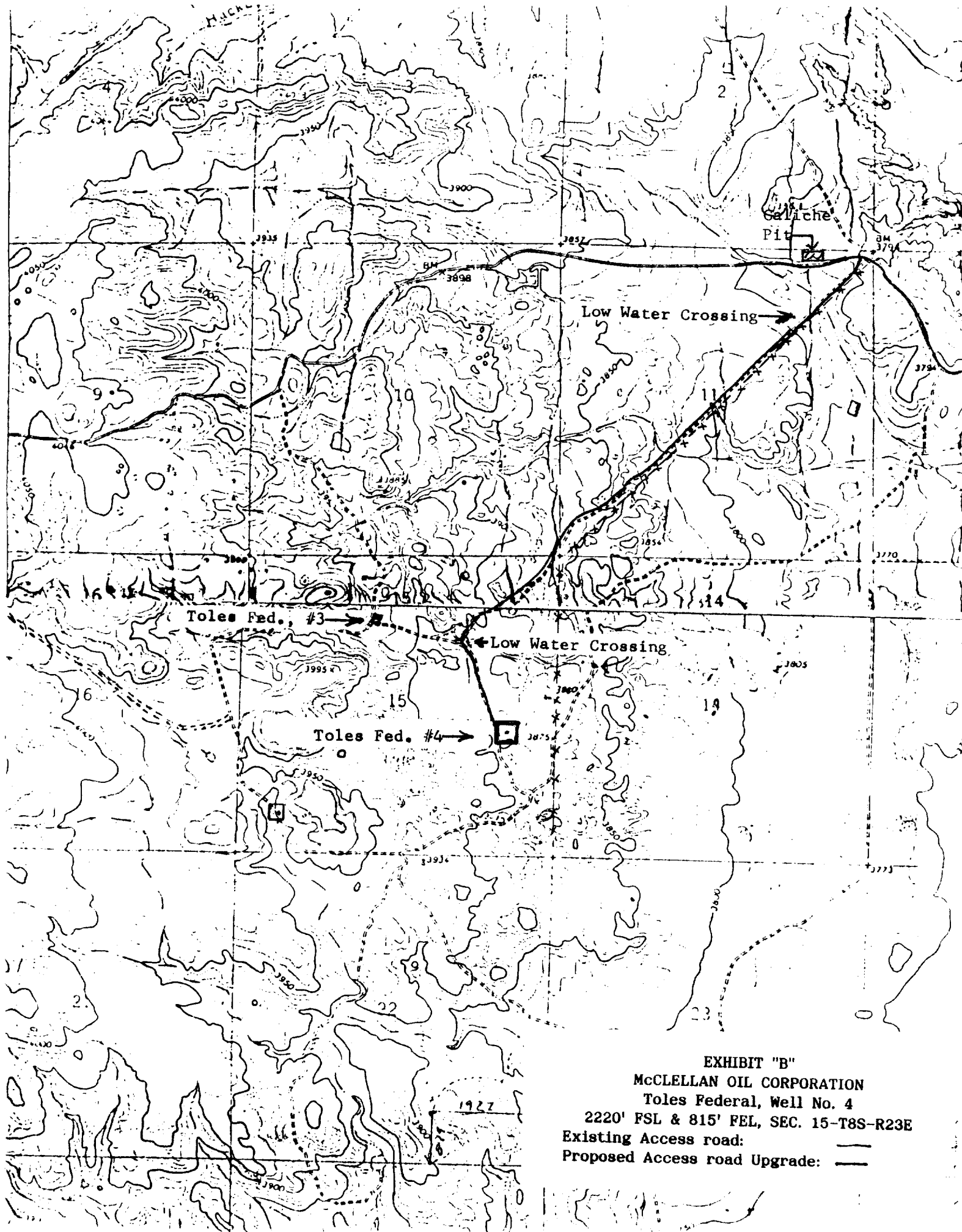
Gas: Possible in Abo below 2915 feet.

Oil: None expected.
4. Proposed Casing Program: See Form 9-331C.
5. Pressure Control Equipment: See Form 9331-C and Exhibit "E".
6. Mud Program: See Form 9-331C.
7. Auxiliary Equipment: Blowout Preventer, gas detector, kelly cock, pit level monitor, flow sensors and stabbing valve.
8. Testing, Logging and Coring Program:

Logging: CNL-LDT	From surface casing at 800' to T. D.
DLL gamma ray	From surface casing at 800' to T. D.

Drill Stem Tests: none.

Coring: None.
9. No abnormal pressures or temperatures are anticipated.
10. Anticipated starting date: May 1, 1987.
Anticipated completion of drilling operations: Approximately 30 days.



GRANDE DRILLING CORP.

RIG # 2

ROSWELL, N. M.

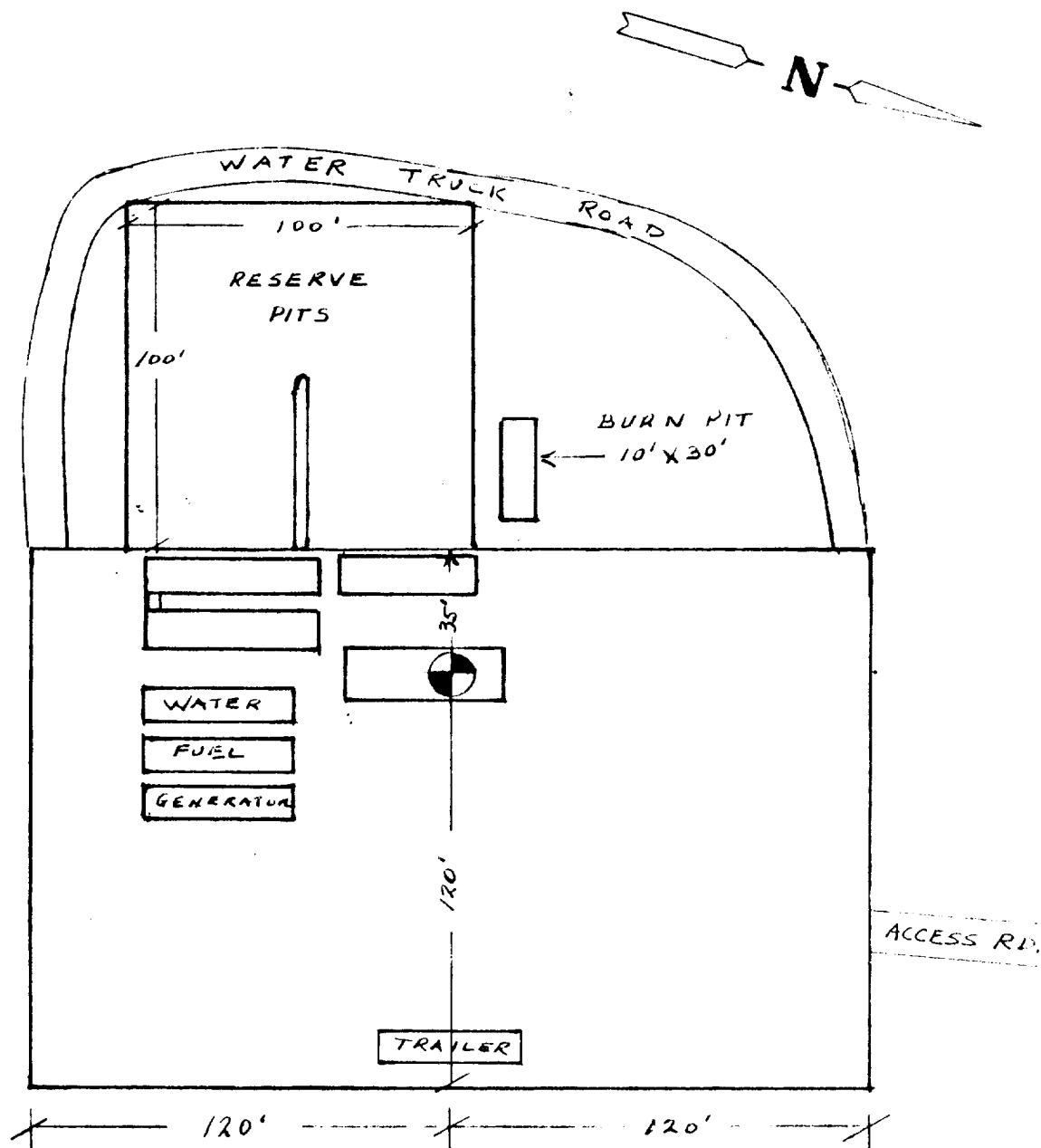


EXHIBIT "D"
McCLELLAN OIL CORPORATION
Toles Federal, Well No. 4
Rig Layout