

UNITED STATES
DEPARTMENT OF THE INTERIOR
BUREAU OF LAND MANAGEMENT

SUBMIT IN TRIPLICATE
(Other instructions on
reverse side)

Form approved.
Budget Bureau No. 1004-0136
Expires August 31, 1985

30-005-62493

5. LEASE DESIGNATION AND SERIAL NO.

NM-0559993

6. IF INDIAN, ALLOTTEE OR TRIBE NAME

7. UNIT AGREEMENT NAME

8. FARM OR LEASE NAME

MM Federal

9. WELL NO.

7

10. FIELD AND POOL, OR WILDCAT

S. Pecos Slope-Abo

11. SEC., T., R., M., OR BLK.
AND SURVEY OR AREA

Sec. 25, T9S, R25E

12. COUNTY OR PARISH

Chaves

N.M.

1a. TYPE OF WORK

DRILL ☒

DEEPEN ☐

PLUG BACK ☐

b. TYPE OF WELL

OIL
WELL ☐

GAS
WELL ☒

OTHER

SINGLE
ZONE ☒

MULTIPLE
ZONE ☐

2. NAME OF OPERATOR

McClellan Oil Corporation

3. ADDRESS OF OPERATOR

P.O. Drawer 730, Roswell, N.M. 88001

4. LOCATION OF WELL (Report location clearly and in accordance with any State requirements.)

At surface

1650' FSL & 1980' FWL, NE/4 SW/4, Unit Letter K

At proposed prod. zone

Same

14. DISTANCE IN MILES AND DIRECTION FROM NEAREST TOWN OR POST OFFICE*

14 miles Northeast of Roswell

15. DISTANCE FROM PROPOSED*

LOCATION TO NEAREST
PROPERTY OR LEASE LINE, FT.
(Also to nearest drlg. unit line, if any)

1650'

16. NO. OF ACRES IN LEASE

1872.48

17. NO. OF ACRES ASSIGNED
TO THIS WELL

160

18. DISTANCE FROM PROPOSED LOCATION*
TO NEAREST WELL, DRILLING, COMPLETED,
OR APPLIED FOR, ON THIS LEASE, FT.

2113'

19. PROPOSED DEPTH

4450'

20. ROTARY OR CABLE TOOLS

Rotary

21. ELEVATIONS (Show whether DF, RT, GR, etc.)

3646' GR

22. APPROX. DATE WORK WILL START*

June 17, 1987

23.

PROPOSED CASING AND CEMENTING PROGRAM

SIZE OF HOLE	SIZE OF CASING	WEIGHT PER FOOT	SETTING DEPTH	QUANTITY OF CEMENT
12 1/4"	8 5/8"	24.0#	950'	500 sx(Circulate)
7 7/8"	4 1/2"	10.5#	4450'	250 sx(to isolate all oil, gas and water zones.)

Propose to drill to approximately 4450' to test the Abo formation. If commercial production is indicated, will run production casing and attempt completion.

Gas is dedicated.

IN ABOVE SPACE DESCRIBE PROPOSED PROGRAM: If proposal is to deepen or plug back, give data on present productive zone, and proposed new productive zone. If proposal is to drill or deepen directionally, give pertinent data on subsurface locations and measured and true vertical depths. Give blowout preventer program, if any.

24.

SIGNED

Larry W. Franklin

TITLE

Agent

DATE

5/11/87

(This space for Federal or State office use)

PERMIT NO.

APPROVAL DATE

APPROVED BY

S/Phil Kirk

TITLE

Area Manager

DATE

JUN 1 1987

CONDITIONS OF APPROVAL, IF ANY:

APPROVAL OF THIS APPLICATION DOES NOT WARRANT OR

CERTIFY THAT THE APPLICANT HOLDS LEGAL OR EQUITABLE

TITLE TO THOSE RIGHTS IN THE SUBJECT LEASE WHICH WOULD

ENTITLE THE APPLICANT TO CONDUCT OPERATIONS THEREON.

*See Instructions On Reverse Side

Title 18 U.S.C. Section 1001, makes it a crime for any person knowingly and willfully to make to any department or agency of the United States any false, fictitious or fraudulent statements or representations as to any matter within its jurisdiction.



All distances must be from the outer boundaries of the Section.

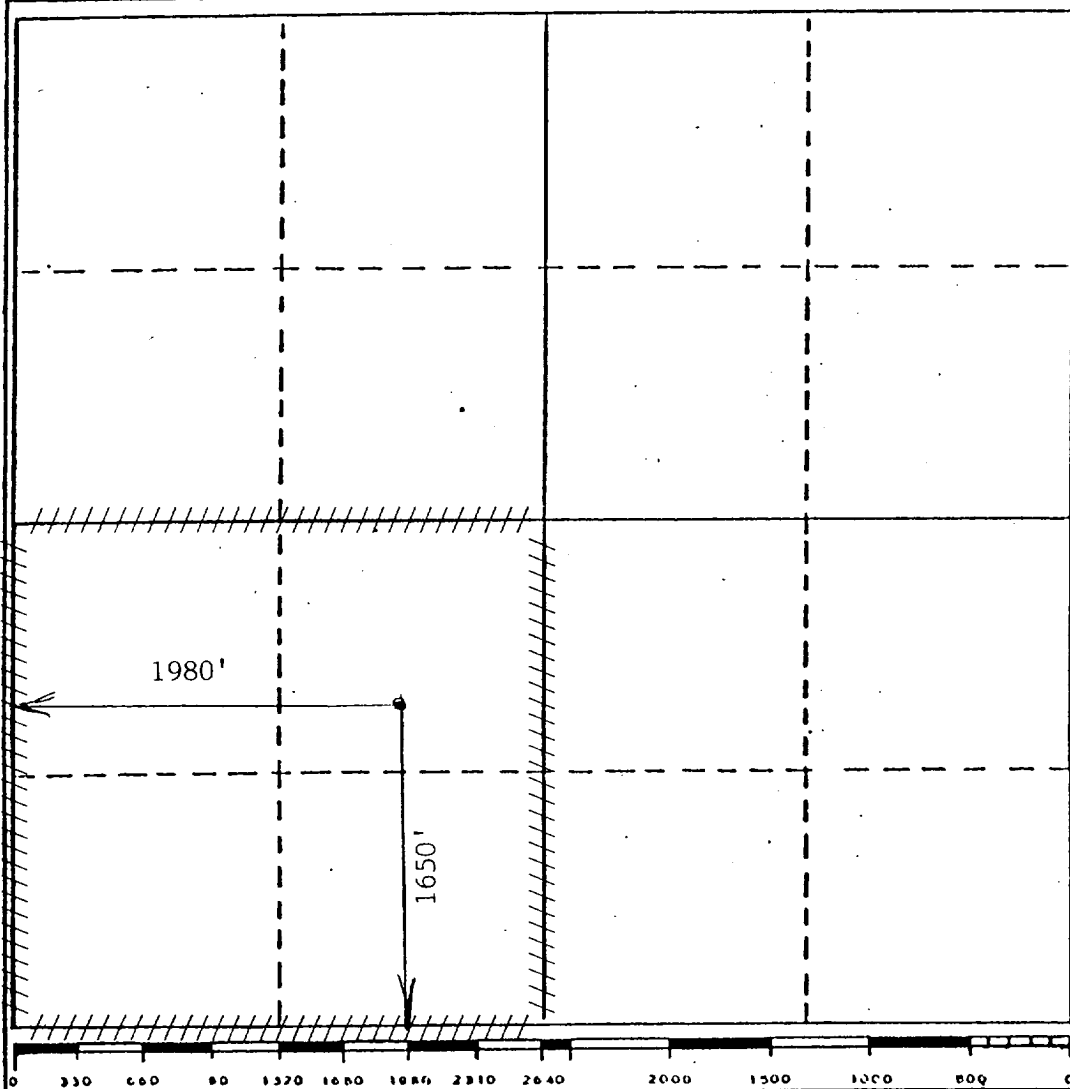
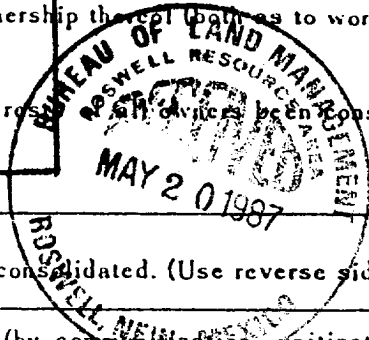
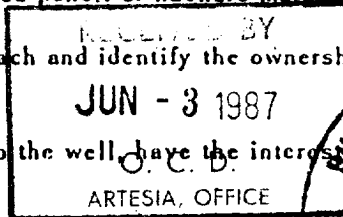
Operator McClellan Oil Corp.			Lease M M Federal			Well No. #7		
Unit Letter K	Section 25	Township 9 South	Range 25 East	County Chaves				
Actual Footage Location of Well: 1650 feet from the South line and 1980 feet from the West line								
Ground Level Elev. 3646	Producing Formation Abo		Pool S. Pecos Slope Abo			Dedicated Acreage: 160 Acres		

1. Outline the acreage dedicated to the subject well by colored pencil or hachure marks on the plat below.
2. If more than one lease is dedicated to the well, outline each and identify the ownership thereof (as to working interest and royalty).
3. If more than one lease of different ownership is dedicated to the well, have the interests been consolidated by communitization, unitization, force-pooling, etc?

☐ Yes ☐ No If answer is "yes," type of consolidation _____

If answer is "no," list the owners and tract descriptions which have actually been consolidated. (Use reverse side of this form if necessary.) _____

No allowable will be assigned to the well until all interests have been consolidated (by communitization, unitization, forced-pooling, or otherwise) or until a non-standard unit, eliminating such interests, has been approved by the Division.



CERTIFICATION

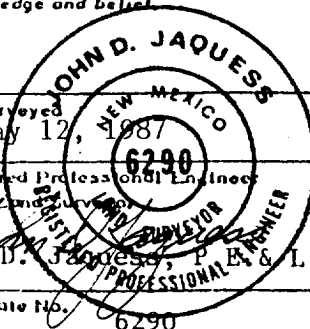
I hereby certify that the information contained herein is true and complete to the best of my knowledge and belief.

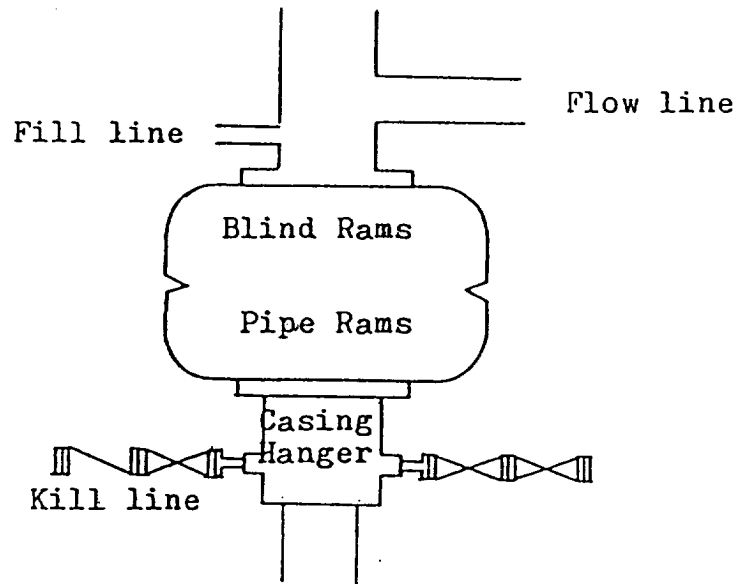
Terry W. Franklin

Name
Terry W. Franklin
Position
Agent
Company
McClellan Oil Corporation
Date
5/14/87

I hereby certify that the well location shown on this plat was plotted from field notes of actual surveys made by me or under my supervision, and that the same is true and correct to the best of my knowledge and belief.

Date Surveyed
May 12, 1987
Registered Professional Engineer and/or Land Surveyor
John D. Jaquess, P.E. & L.S.
Certificate No. 6290





Blowout Preventer
3000 psi working pressure

SUPPLEMENTAL DRILLING DATA
MCClellan Oil Corporation
MM Federal No. 7
1650' FSL & 1980' FWL
Sec. 25, T9S, R25E
Chaves County, N.M.

NM - 0559993



1. Geologic Name of Surface Formation: Recent

2. Estimated Geological Marker Tops:

San Andres	570'	Tubb	3150'
Glorietta	1660'	Abo	3900'

3. Estimated Depths to Oil, Gas or Water:

Gas from 3900 to 4450'

4. Proposed Casing and Cement Programs:

0 - 950' - Set approximately 950', 8 5/8", 24.0#, J-55, ST&C casing, and cement to surface using 500 sx Class 'C' cement.

0 - T.D. Set to total depth 4 1/2", 10.5#, J-55, ST&C casing and cement to isolate all oil, gas and water zones.

5. Proposed Mud Program:

0 - 950' - Native mud.

950 - T.D. - Drill to T/Abo with native mud. Mud up 100' above T/Abo with gal gel, 45 viscosity, 9.5#/gal and 15 cc water loss.

6. Testing, Logging and Coring Programs:

Testing: None

Logging: CNL-LDT, gamma ray, DLL

Coring : None

7. Auxiliary Equipment:

A kelly cock will be installed on the rig floor while drilling operations are in progress.

8. Pressure Control Equipment:

10" 3000 psi double ram B.O.P. will be installed after 8 5/8" casing is set.

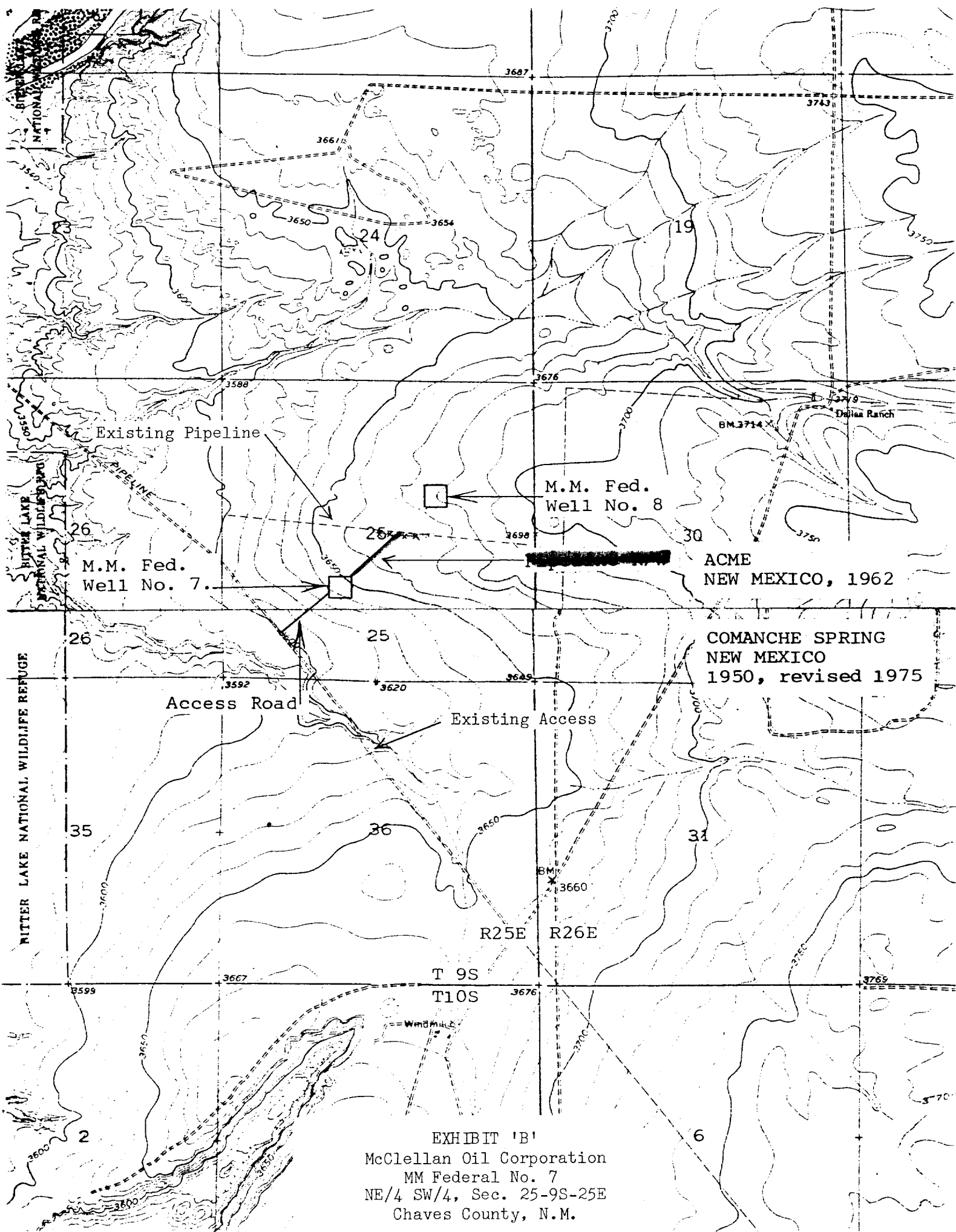


EXHIBIT 'B'
McClellan Oil Corporation
MM Federal No. 7
NE/4 SW/4, Sec. 25-9S-25E
Chaves County, N.M.

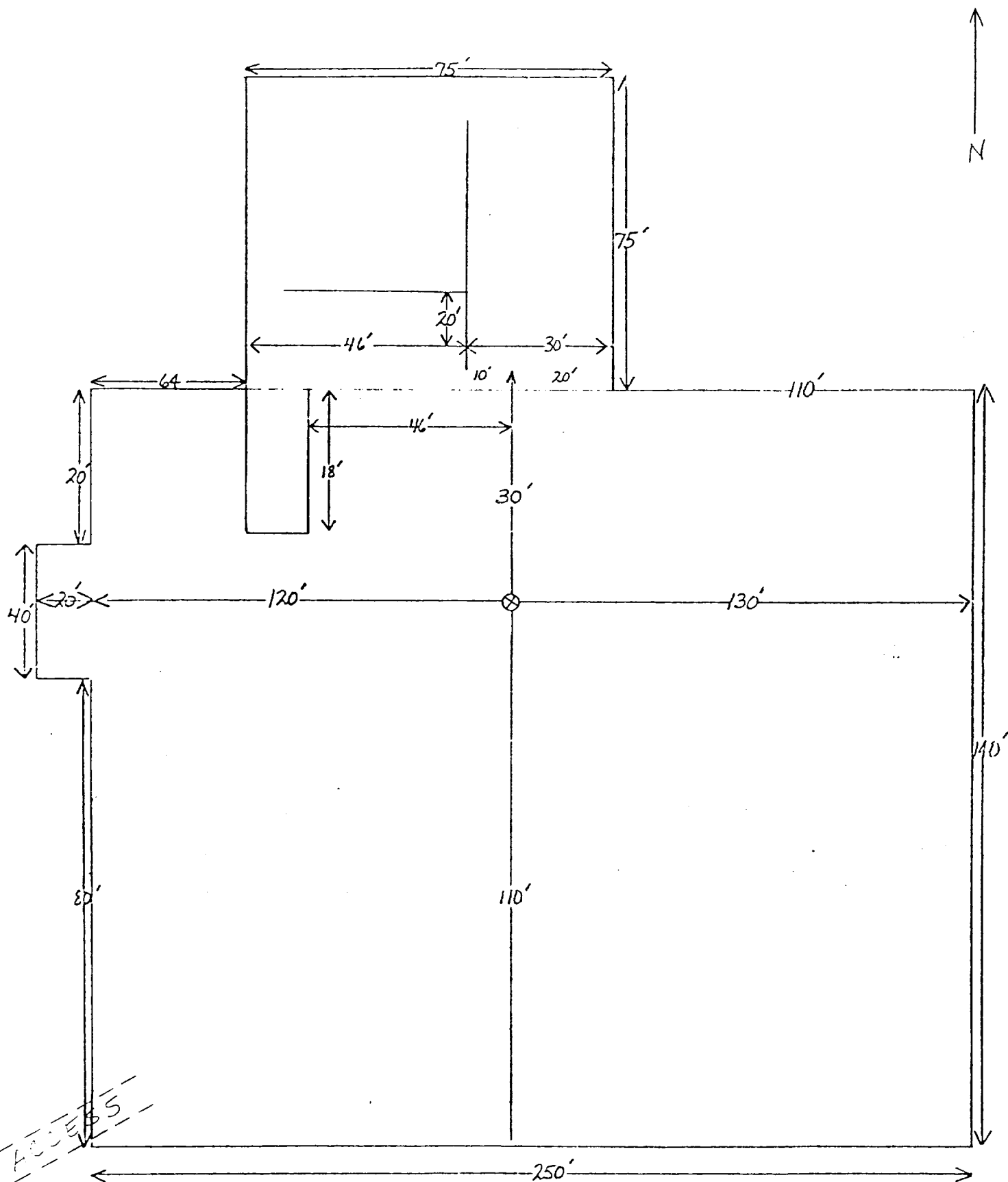


Exhibit 'D'
 McClellan Oil Corporation
 MM Federal No. 7
 NE/4 SW/4, Sec. 25-9S-25E
 Chaves County, N.M.