

NM Oil Cons. Commission  
Drawer DD  
Artesia, NM 88210  
UNITED STATES  
DEPARTMENT OF THE INTERIOR  
BUREAU OF LAND MANAGEMENT

SUBMIT IN TR CATE\*  
(Other instructions on  
reverse side)

Form approved.  
Budget Bureau No. 1004-0136  
Expires August 31, 1985

APPLICATION FOR PERMIT TO DRILL, DEEPEN, OR PLUG BACK

1a. TYPE OF WORK

DRILL ☒

DEEPEN ☐

PLUG BACK ☐

b. TYPE OF WELL

OIL  
WELL ☐

GAS  
WELL ☒

OTHER

SINGLE  
ZONE ☒

MULTIPLE  
ZONE ☐

2. NAME OF OPERATOR

McClellan Oil Corporation

3. ADDRESS OF OPERATOR

P.O. Drawer 730, Roswell, N.M. 88202

4. LOCATION OF WELL (Report location clearly and in accordance with any State requirements.)\*

At surface

1980' FNL & 1650' FEL, SW/4 NE/4, Unit letter 1987

At proposed prod. zone

Same

14. DISTANCE IN MILES AND DIRECTION FROM NEAREST TOWN OR POST OFFICE

14 miles Northeast of Roswell

15. DISTANCE FROM PROPOSED\*

LOCATION TO NEAREST  
PROPERTY OR LEASE LINE, FT.

(Also to nearest drig. unit line, if any)

1650'

18. DISTANCE FROM PROPOSED LOCATION\*

TO NEAREST WELL, DRILLING, COMPLETED,  
OR APPLIED FOR, ON THIS LEASE, FT.

2333'

16. NO. OF ACRES IN LEASE

1872.48

19. PROPOSED DEPTH

4540'

17. NO. OF ACRES ASSIGNED  
TO THIS WELL

160

20. ROTARY OR CABLE TOOLS

Rotary

21. ELEVATIONS (Show whether DF, RT, GR, etc.)

3680' GR

22. APPROX. DATE WORK WILL START\*

June 17, 1987

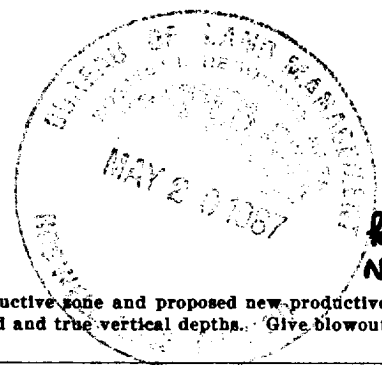
23.

PROPOSED CASING AND CEMENTING PROGRAM

SIZE OF HOLE	SIZE OF CASING	WEIGHT PER FOOT	SETTING DEPTH	QUANTITY OF CEMENT
12 1/4"	8 5/8"	24.0#	950'	500 sx(Circulate)
7 7/8"	4 1/2"	10.5#	4540'	250 sx(to isolate all oil, gas and water zones.

Propose to drill to approximately 4540' and test the Abo formation. If commercial production is indicated, will run production casing and attempt completion.

Gas is dedicated.



IN ABOVE SPACE DESCRIBE PROPOSED PROGRAM: If proposal is to deepen or plug back, give data on present productive zone and proposed new productive zone. If proposal is to drill or deepen directionally, give pertinent data on subsurface locations and measured and true vertical depths. Give blowout preventer program, if any.

24.

SIGNED

*Jerry W. Franklin*

TITLE

Agent

DATE

5/11/87

(This space for Federal or State office use)

PERMIT NO.

APPROVAL DATE

S/Phil Kirk

TITLE

Area Manager

DATE

JUN 1 1987

APPROVED BY

CONDITIONS OF APPROVAL, IF ANY:

APPROVAL OF THIS APPLICATION DOES NOT WARRANT OR  
CERTIFY THAT THE APPLICANT HOLDS LEGAL OR EQUITABLE  
TITLE TO THOSE RIGHTS IN THE SUBJECT LEASE WHICH WOULD  
ENTITLE THE APPLICANT TO CONDUCT OPERATIONS THEREON.  
\*See Instructions On Reverse Side

All distances must be from the outer boundaries of the Section.

Operator McClellan Oil Corp.		Lease M M Federal		Well No. #8
Unit Letter G	Section 25	Township 9 South	Range 25 East	County Chaves
Actual Postage Location of Well: 1650 feet from the East line and 1980 feet from the North line				
Ground Level Elev. 3680	Producing Formation Abo		Paul Pecos Slope Abo	Dedicated Acreage 160 Acres

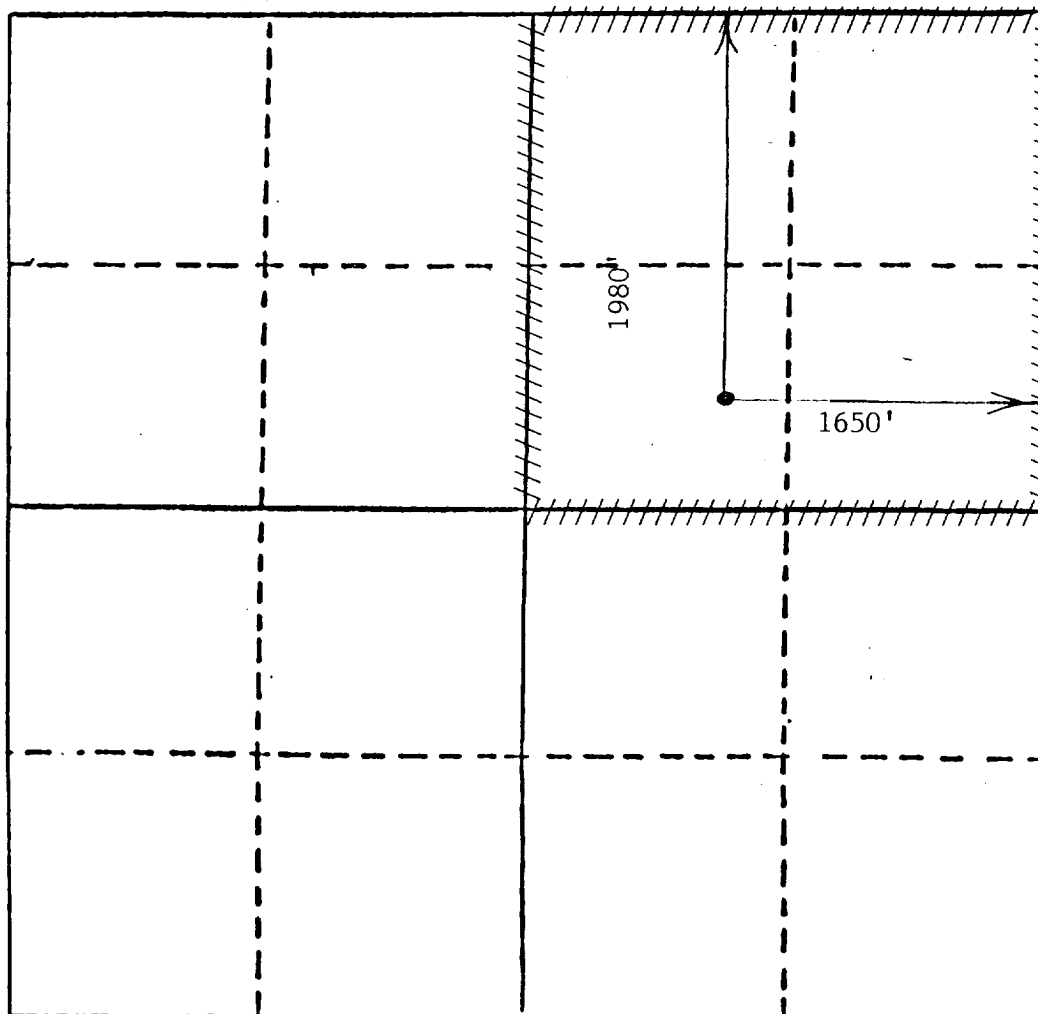
- Outline the acreage dedicated to the subject well by colored pencil or hatchure marks on the plat below.
- If more than one lease is dedicated to the well, outline each and identify the ownership thereof (both as to working interest and royalty).
- If more than one lease of different ownership is dedicated to the well, have the interests of all owners been consolidated by communitization, unitization, force-pooling, etc?
 

JUN - 6 1987  
O. C. D.  
REG. OFFICE

☐ Yes ☐ No If answer is "yes," type of consolidation

If answer is "no," list the owners and tract descriptions which have actually been consolidated. (Use reverse side of this form if necessary.)

No allowable will be assigned to the well until all interests have been consolidated (by communitization, unitization, forced-pooling, or otherwise) or until a non-standard unit, eliminating such interests, has been approved by the Division



### CERTIFICATION

I hereby certify that the information contained herein is true and complete to the best of my knowledge and belief.

*Terry W. Franklin*

Name

Terry W. Franklin

Position

Agent

Company

McClellan Oil Corporation

Date

5/14/87

I hereby certify that the well location shown on this plat was plotted from field notes of actual surveys made by me or under my supervision, and that the same is true and correct to the best of my knowledge and belief.

Date Surveyed

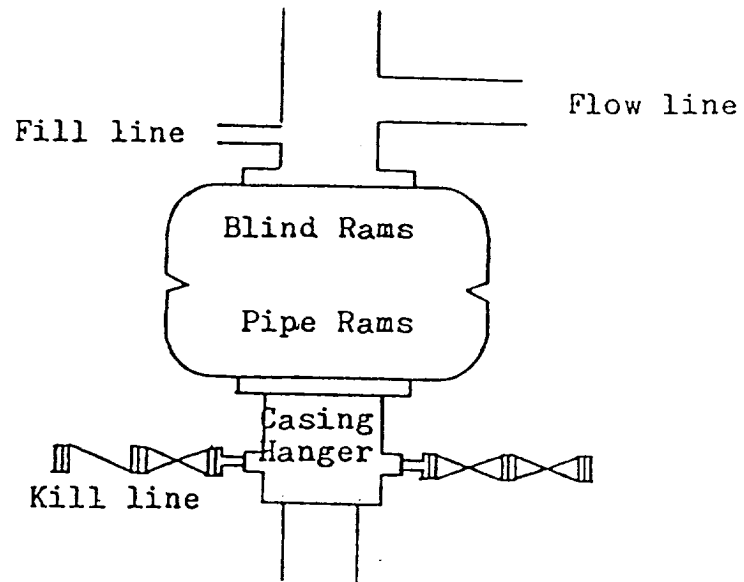
May 1987

Registered Professional Engineer and/or Land Surveyor

John D. Jaques, P.E. & L.S.

Certificate No.

6290



Blowout Preventer  
3000 psi working pressure

SUPPLEMENTAL DRILLING DATA  
McClellan Oil Corporation  
MM Federal No. 8  
1980' FNL & 1650' FEL  
Sec. 25, T9S, R25E  
Chaves County, N.M.

NM - 0559993



1. Geologic Name of Surface Formation: Recent

2. Estimated Geological Marker Tops:

San Andres	670'	Tubb	3250'
Glorietta	1760'	Abo	3990'

3. Estimated Depths to Oil, Gas or Water:

Gas from 3990 to 4540'.

4. Proposed Casing and Cement Programs:

0 - 950' - Set approximately 950', 8 5/8", 24.0#, J-55, ST&C casing, and cement to surface using 500SX Class 'C' cement.

0 - T.D. - Set to total depth, 4 1/2", 10.5#, J-55, ST&C casing and cement to isolate all oil, gas and water zones.

5. Proposed Mud Program:

0 - 950' - Native mud  
950 - T.D. - Drill to T/Abo with native mud. Mud up 100' above T/Abo with salt gel, 45 viscosity, 9.5#/gal and 15 cc water loss.

6. Testing, Logging and Coring Programs:

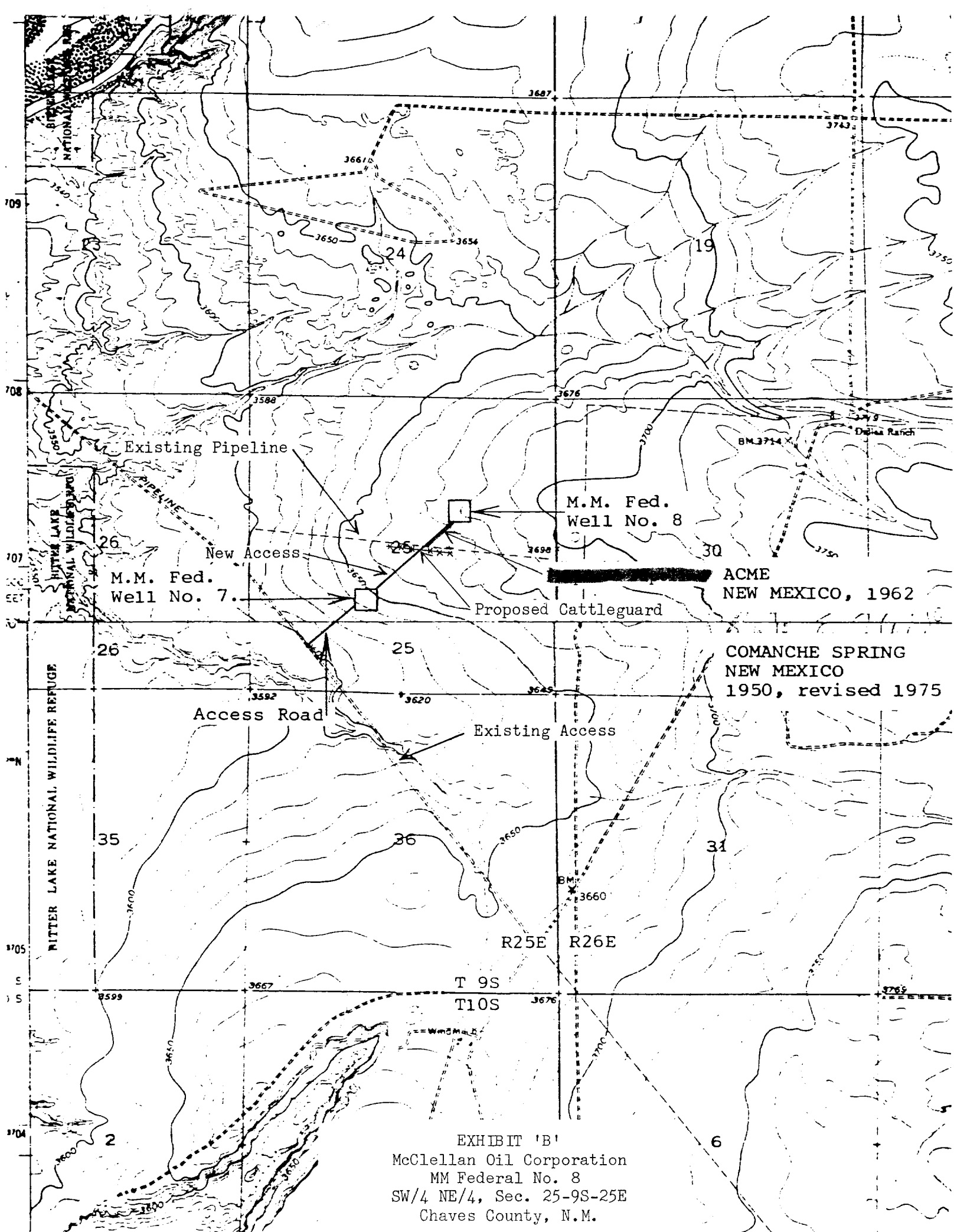
Testing: None  
Logging: CNL-LDT, gamma ray, DLL  
Coring: None

7. Auxiliary Equipment:

A kelly cock will be installed on the rig floor while drilling operations are in progress.

8. Pressure Control Equipment:

10" 3000 psi double ram B.O.P. will be installed after 8 5/8" casing is set.



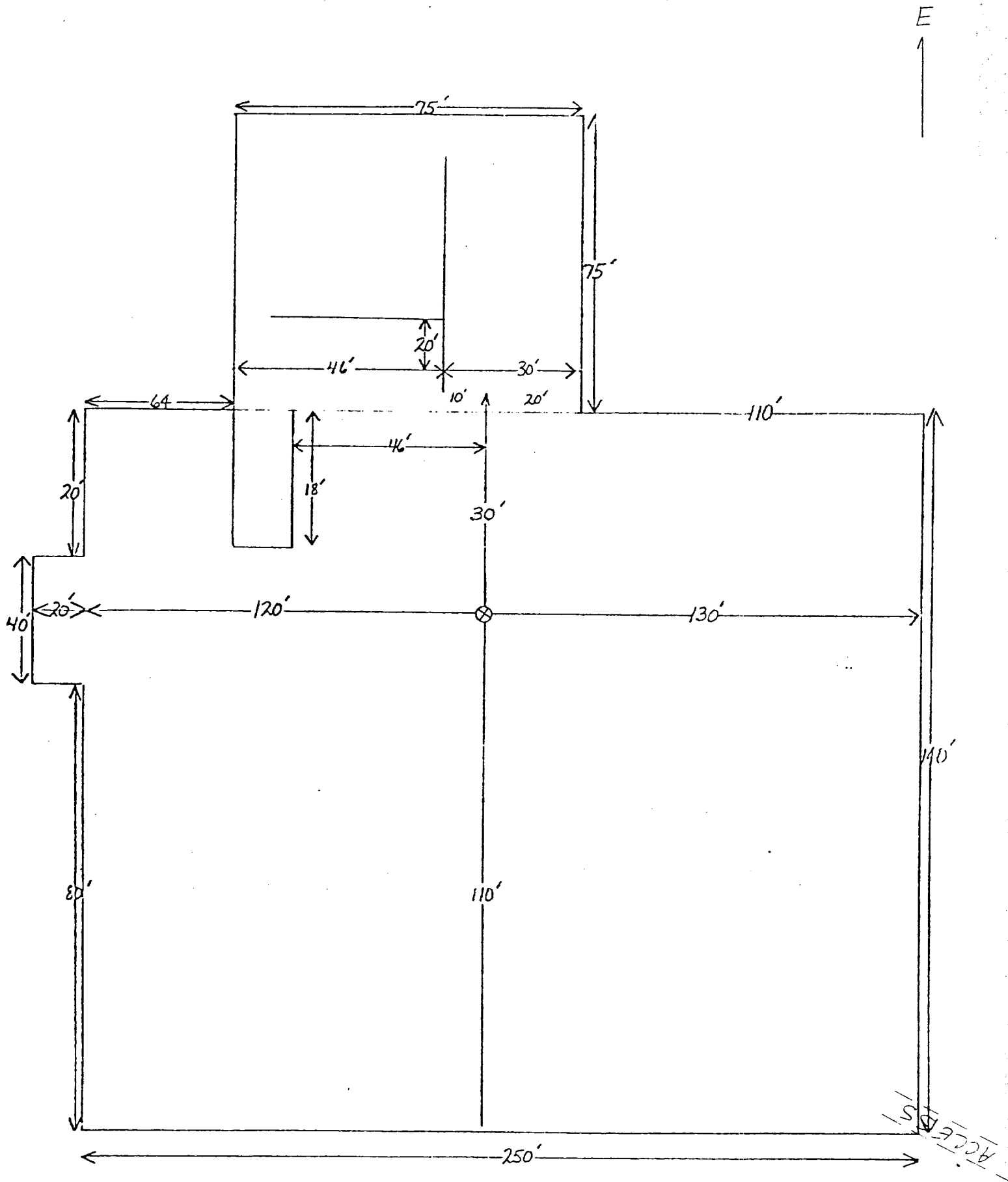


Exhibit 'D'  
 McClellan Oil Corporation  
 MM Federal No. 8  
 SW/4 NE/4, Sec. 25-9S-25E  
 Chaves County, N.M.