

UNITED STATES  
DEPARTMENT OF THE INTERIOR  
BUREAU OF LAND MANAGEMENT

APPLICATION FOR PERMIT TO DRILL, DEEPEN, OR PLUG BACK

1a. TYPE OF WORK

DRILL ☒

DEEPEN ☐

PLUG BACK ☐

b. TYPE OF WELL

OIL  
WELL ☐

GAS  
WELL ☒

OTHER

SINGLE  
ZONE ☒ MULTIPLE  
ZONE ☐

2. NAME OF OPERATOR

McClellan Oil Corporation

3. ADDRESS OF OPERATOR

P.O. Drawer 730, Roswell, N.M.

4. LOCATION OF WELL (Report location clearly and in accordance with any State requirements.)

At surface

1980' FNL & 660' FEL, SE/4 NE/4, Unit letter H

At proposed prod. zone

Same

14. DISTANCE IN MILES AND DIRECTION FROM NEAREST TOWN OR POST OFFICE\*

9 miles Northeast of Roswell

15. DISTANCE FROM PROPOSED\*

LOCATION TO NEAREST

PROPERTY OR LEASE LINE, FT.

(Also to nearest drlg. unit line, if any)

660'

18. DISTANCE FROM PROPOSED LOCATION\*

TO NEAREST WELL, DRILLING, COMPLETED,

OR APPLIED FOR, ON THIS LEASE, FT.

16. NO. OF ACRES IN LEASE

1514.68

19. PROPOSED DEPTH

4700'

17. NO. OF ACRES ASSIGNED  
TO THIS WELL

160

20. ROTARY OR CABLE TOOLS

Rotary

21. ELEVATIONS (Show whether DF, RT, GR, etc.)

3753' GR

22. APPROX. DATE WORK WILL START\*

June 10, 1987

23.

PROPOSED CASING AND CEMENTING PROGRAM

SIZE OF HOLE	SIZE OF CASING	WEIGHT PER FOOT	SETTING DEPTH	QUANTITY OF CEMENT
12 1/4"	8 5/8"	24.0#	900'	450 sx(Circulate)
7 7/8"	4 1/2"	10.5#	4700'	300 sx(to isolate all oil, gas and water zones.

Propose to drill to a depth of 4700' in order to test the Abo formation. If commercial production is indicated, will run production casing and attempt completion.

Gas is dedicated.

IN ABOVE SPACE DESCRIBE PROPOSED PROGRAM: If proposal is to deepen or plug back, give data on present productive zone and proposed new productive zone. If proposal is to drill or deepen directionally, give pertinent data on subsurface locations and measured and true vertical depths. Give blowout preventer program, if any.

24.

SIGNED

*Terry W. Franklin*

TITLE

Agent

DATE

5/11/87

(This space for Federal or State office use)

PERMIT NO.

APPROVAL DATE

S/Phil Kirk

Area Manager

APPROVED BY

CONDITIONS OF APPROVAL, IF ANY:

TITLE

DATE JUN 1 1987

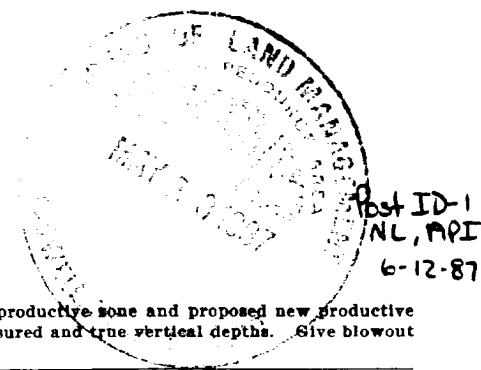
CERTIFY THAT

TITLE TO THIS

ENTITLED THE APPLICANT TO OBTAIN

\*See Instructions On Reverse Side

Title 18 U.S.C. Section 1001, makes it a crime for any person knowingly and willfully to make to any department or agency of the United States any false, fictitious or fraudulent statements or representations as to any matter within its jurisdiction.



## OIL CONSERVATION DIVISION

STATE OF NEW MEXICO  
ENERGY AND MINERALS DEPARTMENTP. O. BOX 2088  
SANTA FE, NEW MEXICO 87501Form C-102  
Revised 10-6-76

All Distances must be from the outer boundaries of the Section.

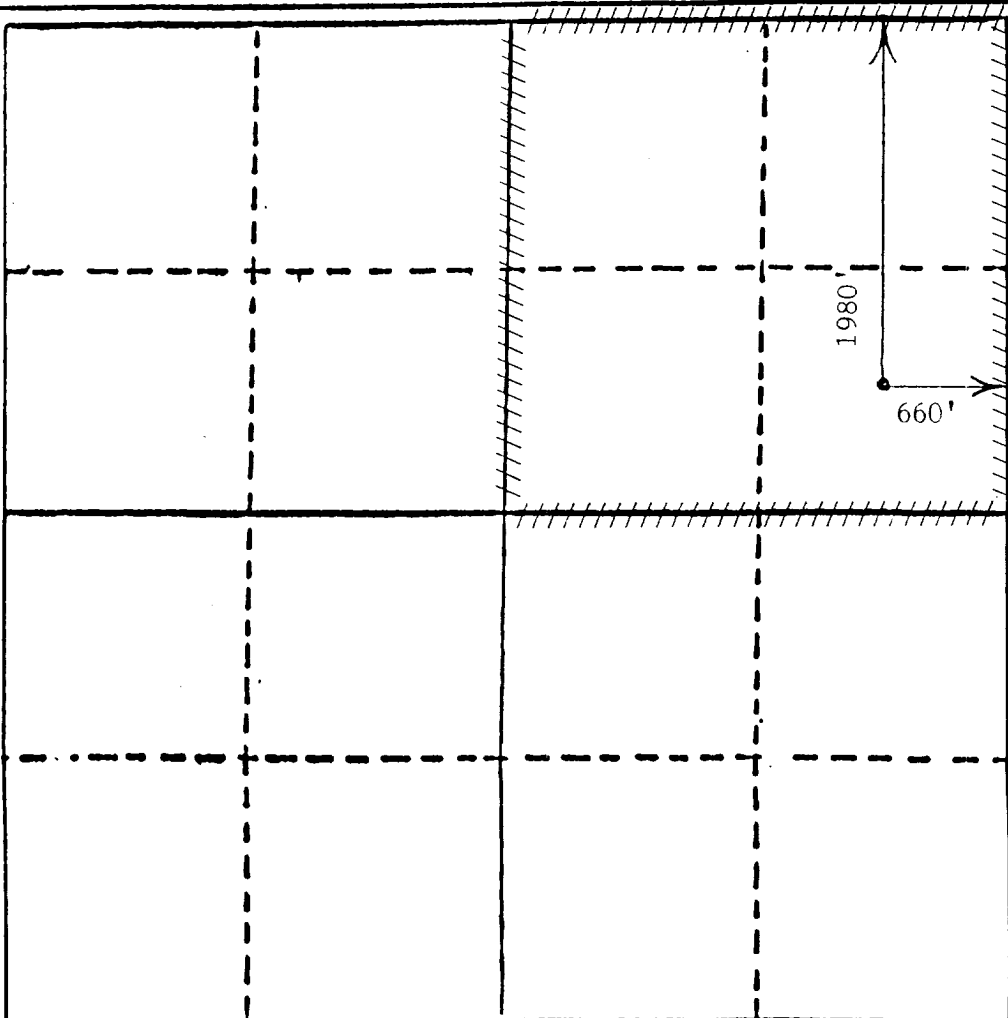
Operator McClellan Oil Corp.		Lease Penjack Federal		Well No. 3
Unit Lease H	Section 12	Township 10 South	Range 25 East	County Chaves
Actual Footage Location of Well 1980 feet from the North line and 660 feet from the East line				
Ground Level Elev. 3753	Producing Formation Abo	Pool Pecos Slope Abo	Dedicated Acreage 160 Acres	

1. Outline the acreage dedicated to the subject well by colored pencil or hatchure marks on the plat below.
2. If more than one lease is dedicated to the well, outline each and identify the ownership thereof (both as to working interest and royalty).
3. If more than one lease of different ownership is dedicated to the well, have the interests of all owners been consolidated by communitization, unitization, force-pooling, etc?

☐ Yes ☐ No - If answer is "yes," type of consolidation \_\_\_\_\_

If answer is "no," list the owners and tract descriptions which have actually been consolidated. (Use reverse side of this form if necessary.) \_\_\_\_\_

No allowable will be assigned to the well until all interests have been consolidated (by communitization, unitization, forced-pooling, or otherwise) or until a non-standard unit, eliminating such interests, has been approved by the Division



## CERTIFICATION

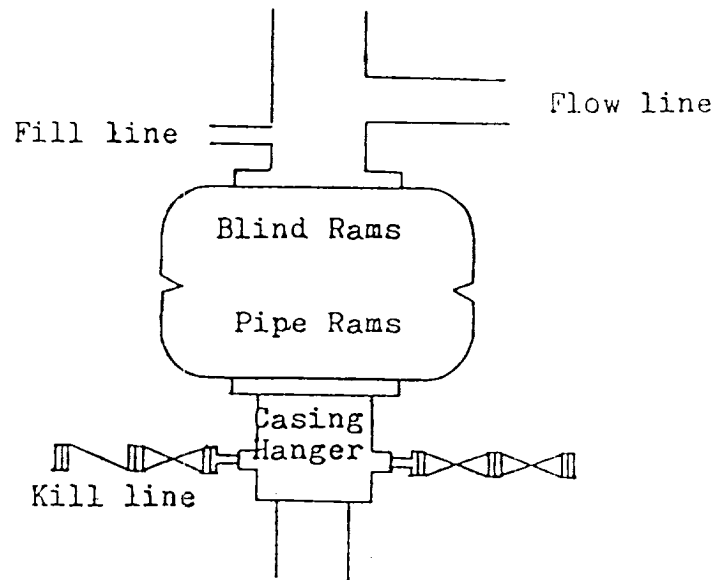
I hereby certify that the information contained herein is true and complete to the best of my knowledge and belief.

*Terry W. Franklin*

Name  
Terry W. Franklin  
Position  
Agent  
Company  
McClellan Oil Corporation  
Date  
5/14/87

I hereby certify that the well location shown on this plat was plotted from field notes of actual surveys made by me or under my supervision, and that the same is true and correct to the best of my knowledge and belief.

Date Surveyed  
May 12, 1987  
Registered Professional Engineer and/or Land Surveyor  
John D. Jaquess, P.E. & L.S.  
Certification No.  
6290



Blowout Preventer  
3000 psi working pressure

SUPPLEMENTAL DRILLING DATA  
McClellan Oil Corporation  
Penjack Federal No. 3  
1980' FNL & 660' FEL  
Sec. 12, T10S, R25E  
Chaves County, N.M.

NM - 8431

1. Geologic Name of Surface Formation: Recent

2. Estimated Geological Marker Tops:

San Andres	730'	Tubb	3340'
Glorietta	1860'	Abo	4090'

3. Estimated Depths to Oil, Gas or Water:

Gas possible from 4090 to 4700'.

4. Proposed Casing and Cement Programs:

0 - 900' - Set approximately 900' of 8 5/8", 24.0#, J-55, ST&C casing and cement to surface using 450SX Class 'C' cement.

0 - 4700' - Set to total depth 4 1/2", 10.5#, J-55, ST&C casing and cement to isolate all oil, gas, and water zones.

5. Proposed Mud Program:

0 - 900' - Native mud  
900 - T.D. - Drill to T/Abo with native mud. Mud up 100' above Abo with salt base gel, 45 viscosity, 9.5#/gal. and 15cc water loss.

6. Testing, Logging and Coring Programs:

Testing: None  
Logging: CNL-LDT, gamma ray, DLL  
Coring: None

7. Auxiliary Equipment:

A kelly cock will be located on the rig floor while drilling operations are in progress.

8. Pressure Control Equipment:

10" 3000 psi double ram B.O.P. will be installed after 8 5/8" casing is set.

# GEOLOGICAL SURVEY

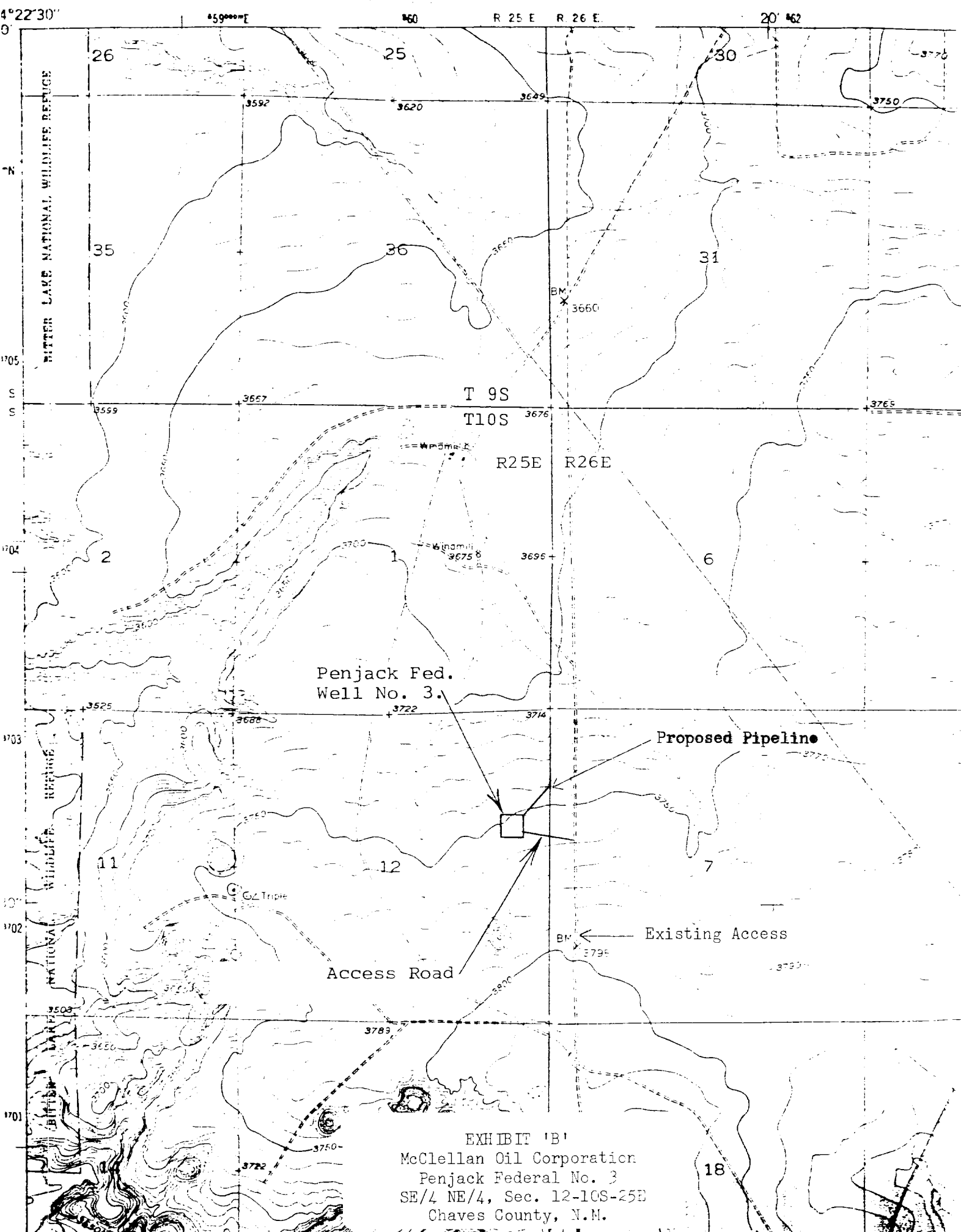


EXHIBIT 'B'  
 McClellan Oil Corporation  
 Penjack Federal No. 3  
 SE/4 NE/4, Sec. 12-10S-25E  
 Chaves County, N.M.

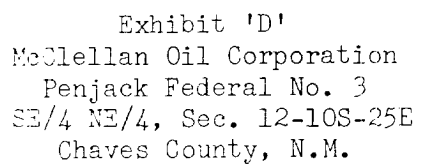


Exhibit 'D'  
McClellan Oil Corporation  
Penjack Federal No. 3  
SE/4 NE/4, Sec. 12-10S-25E  
Chaves County, N.M.