

ARTESIA, NEW MEXICO  
UNITED STATES  
DEPARTMENT OF THE INTERIOR  
GEOLOGICAL SURVEY

SUBMIT IN DUPLICATE\*

For instructions on  
reverse side)Form approved.  
Budget Bureau No. 42-B1425.30-005-62544  
5. LEASE DESIGNATION AND SERIAL NO.  
NM-8431

6. IF INDIAN, ALLOTTEE OR TRIBE NAME

7. UNIT AGREEMENT NAME

8. FARM OR LEASE NAME

Penjack Federal

9. WELL NO.

4

10. FIELD AND POOL, OR WILDCAT

Pecos Slope Abo

11. SEC., T., R., M., OR BLK.  
AND SURVEY OR AREA

Sec. 6-T10S-R26E

12. COUNTY OR PARISH

Chaves

13. STATE

New Mexico

## 1a. TYPE OF WORK

DRILL ☒DEEPEN ☐O.C.P. ☐  
ARTESIA, OFFICE

## b. TYPE OF WELL

OIL  
WELL ☐CAS  
WELL ☒

OTHER

SINGLE  
ZONE ☐MULTIPLE  
ZONE ☐

## 2. NAME OF OPERATOR

McClellan Oil Corporation ✓

## 3. ADDRESS OF OPERATOR

P. O. Dr. 730 Roswell, New Mexico 88202

## 4. LOCATION OF WELL (Report location clearly and in accordance with any State requirements.)\*

At surface

1980' FSL &amp; 1650' FWL

At proposed prod. zone

Same

## 14. DISTANCE IN MILES AND DIRECTION FROM NEAREST TOWN OR POST OFFICE\*

15 miles northeast of Roswell, NM

## 15. DISTANCE FROM PROPOSED\*

LOCATION TO NEAREST  
PROPERTY OR LEASE LINE, FT.  
(Also to nearest drlg. unit line, if any)

1650'

## 16. NO. OF ACRES IN LEASE

1514.68

17. NO. OF ACRES ASSIGNED  
TO THIS WELL

160

## 18. DISTANCE FROM PROPOSED LOCATION\*

TO NEAREST WELL, DRILLING, COMPLETED,  
OR APPLIED FOR, ON THIS LEASE, FT.

2513'

## 19. PROPOSED DEPTH

4700'

## 20. ROTARY OR CABLE TOOLS

Rotary

## 21. ELEVATIONS (Show whether DF, RT, GR, etc.)

3732 GL

## 22. APPROX. DATE WORK WILL START\*

Sept. 15, 1987

## 23.

## PROPOSED CASING AND CEMENTING PROGRAM

SIZE OF HOLE	SIZE OF CASING	WEIGHT PER FOOT	SETTING DEPTH	QUANTITY OF CEMENT
12 1/4"	8 5/8"	23#	900' / 100'	450 Sx Class "C" Circulated
7 7/8"	4 1/2"	10.5#	4700'	350 Sx Class "C"

## Mud Program:

Drill to top of Abo with Fresh water. Will mud up 100' above Abo with 9.5 lb/gal. wt., 40 viscosity mud and 15 cc water loss.

## BOP Specification:

Will install and test daily a 3000 psi Shaffer 10" Series 900 Type "E" double hydraulic BOP.

Gas is dedicated.

IN ABOVE SPACE DESCRIBE PROPOSED PROGRAM: If proposal is to deepen or plug back, give data on present productive zone and proposed new productive zone. If proposal is to drill or deepen directionally, give pertinent data on subsurface locations and measured and true vertical depths. Give blowout preventer program, if any.

24.

SIGNED

*George R. Smith*

TITLE

Agent for:

McClellan Oil Corp.

DATE August 26, 1987

(This space for Federal or State office use)

PERMIT NO.

APPROVAL DATE

APPROVED BY

S/ Levi Deike, Acting

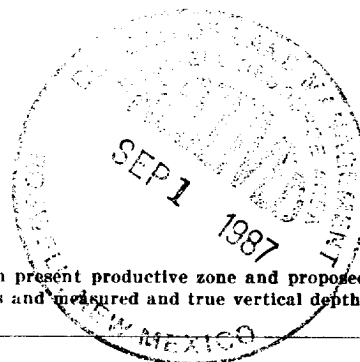
TITLE

Area Manager

DATE

SEP 14 1987

CONDITIONS OF APPROVAL, IF ANY

APPROVAL OF THIS APPLICATION DOES NOT WARRANT OR  
CERTIFY THAT THE APPLICANT HOLDS LEGAL OR EQUITABLE  
TITLE TO THOSE RIGHTS IN THE SUBJECT LEASE WHICH WOULD  
ENTITLE THE APPLICANT TO CONDUCT OPERATIONS THEREON.Post ID\* 1  
N.C. & APT  
9-25-87

All distances must be from the outer boundaries of the Section.

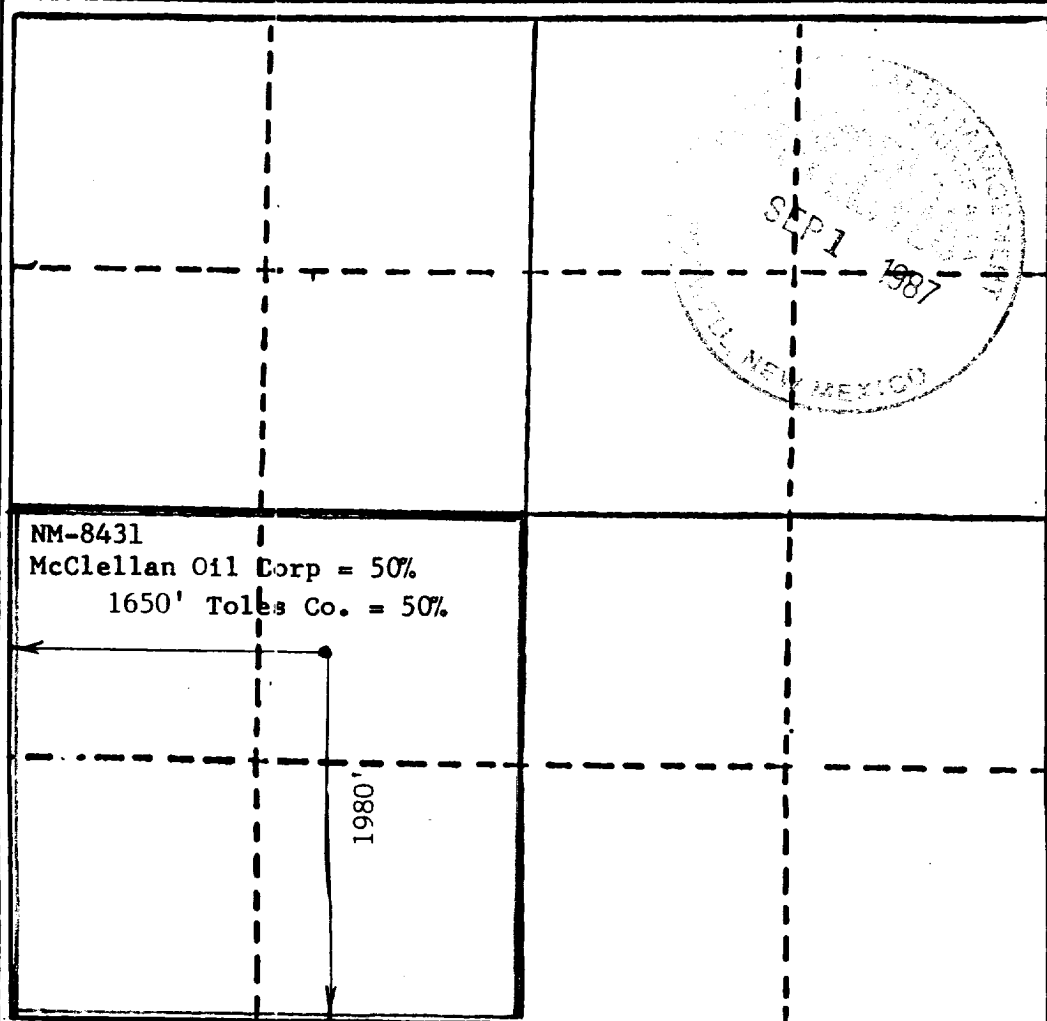
Operator <b>McCLELLAN OIL CORP.</b>		Lease <b>PEN JACK FEDERAL</b>		Well No. <b>#4</b>
Unit Letter <b>K</b>	Section <b>6</b>	Township <b>10 SOUTH</b>	Range <b>26 EAST</b>	County <b>CHAVES</b>
Actual Footage Location of Well				
1980 feet from the		<b>SOUTH</b>	line and	1650 feet from the
Ground Level Elev. <b>3732</b>		Producing Formation <b>Abo</b>		Dedicated Acreage <b>160</b>
		Pool <b>Pecos Slope Abo</b>		Acres

1. Outline the acreage dedicated to the subject well by colored pencil or hatchure marks on the plat below.
2. If more than one lease is dedicated to the well, outline each and identify the ownership thereof (both as to working interest and royalty).
3. If more than one lease of different ownership is dedicated to the well, have the interests of all owners been consolidated by communitization, unitization, force-pooling, etc?

☐ Yes ☐ No - If answer is "yes," type of consolidation \_\_\_\_\_

If answer is "no," list the owners and tract descriptions which have actually been consolidated. (Use reverse side of this form if necessary.) \_\_\_\_\_

No allowable will be assigned to the well until all interests have been consolidated (by communitization, unitization, forced-pooling, or otherwise) or until a non-standard unit, eliminating such interests, has been approved by the Division



**CERTIFICATION**

I hereby certify that the information contained herein is true and complete to the best of my knowledge and belief.

Name \_\_\_\_\_

**George R. Smith**

Position \_\_\_\_\_

Agent for:

Company \_\_\_\_\_

**McClellan Oil Corp.**

Date \_\_\_\_\_

**August 28, 1987**

I hereby certify that the well location shown on this plat was plotted from field notes of actual surveys made by me or under my supervision, and that the same is true and correct to the best of my knowledge and belief.

Date Surveyed \_\_\_\_\_

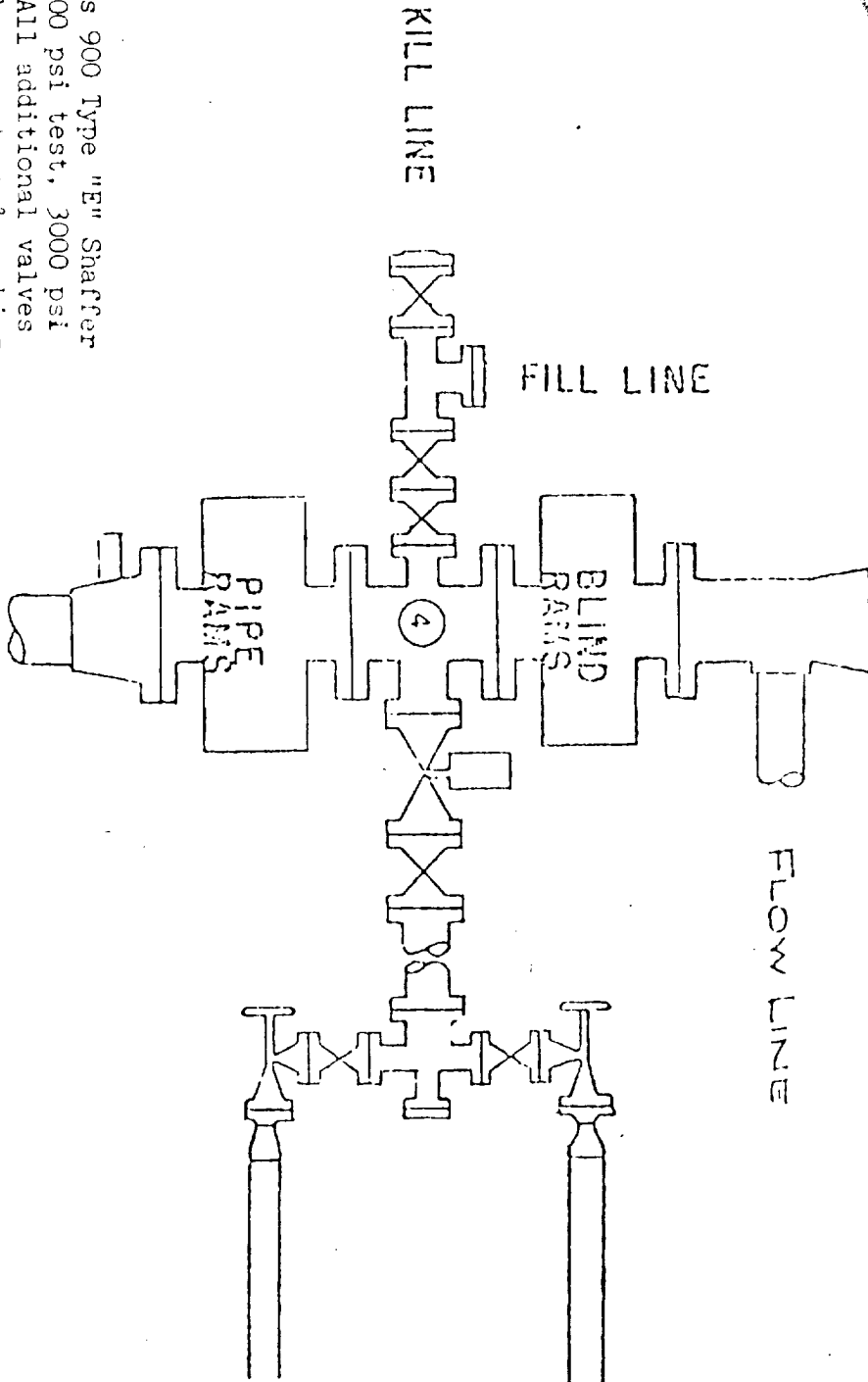
**AUGUST 26 1987**

I hereby certify that I am a duly Licensed Professional Engineer and/or Land Surveyor

**ANDRE D. JACQUES**  
**REGISTERED PROFESSIONAL ENGINEER AND LAND SURVEYOR**  
**STATE OF NEW MEXICO**  
**6290**



WEK DRILLING CO., INC. - Rig 1 & 3  
**BLOWOUT PREVENTER SPECIFICATION**



BOP's are 10" Series 900 Type "E" Shaffer Double Hydraulic 6000 psi test, 3000 psi working pressure. All additional valves & connections are the same test & working pressures.

APPLICATION FOR DRILLING

McCLELLAN OIL CORPORATION  
Penjack Federal, Well No. 4  
1980' FSL & 1650' FWL, Sec. 6-T10S-R26E  
Chaves County, New Mexico  
Lease No.: NM-8431  
(Development Well)

In conjunction with Form 9-331C, Application for Permit to Drill subject well, McClellan Oil Corporation submits the following items of pertinent information in accordance with BLM requirements:

1. The geologic surface formation is recent Permian with quaternary alluvium and other surficial deposits.
2. The estimated tops of geologic markers are as follows:

San Andres	780'	Abo	4133'
Glorieta	1890'	T.D.	4700'
Tubb	3380'		

3. The estimated depths at which water, oil or gas formations are anticipated to encountered:

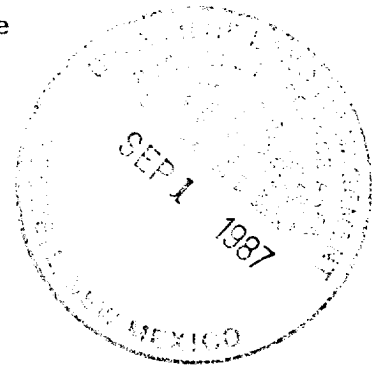
Water: Surface water between 100' to 300'.

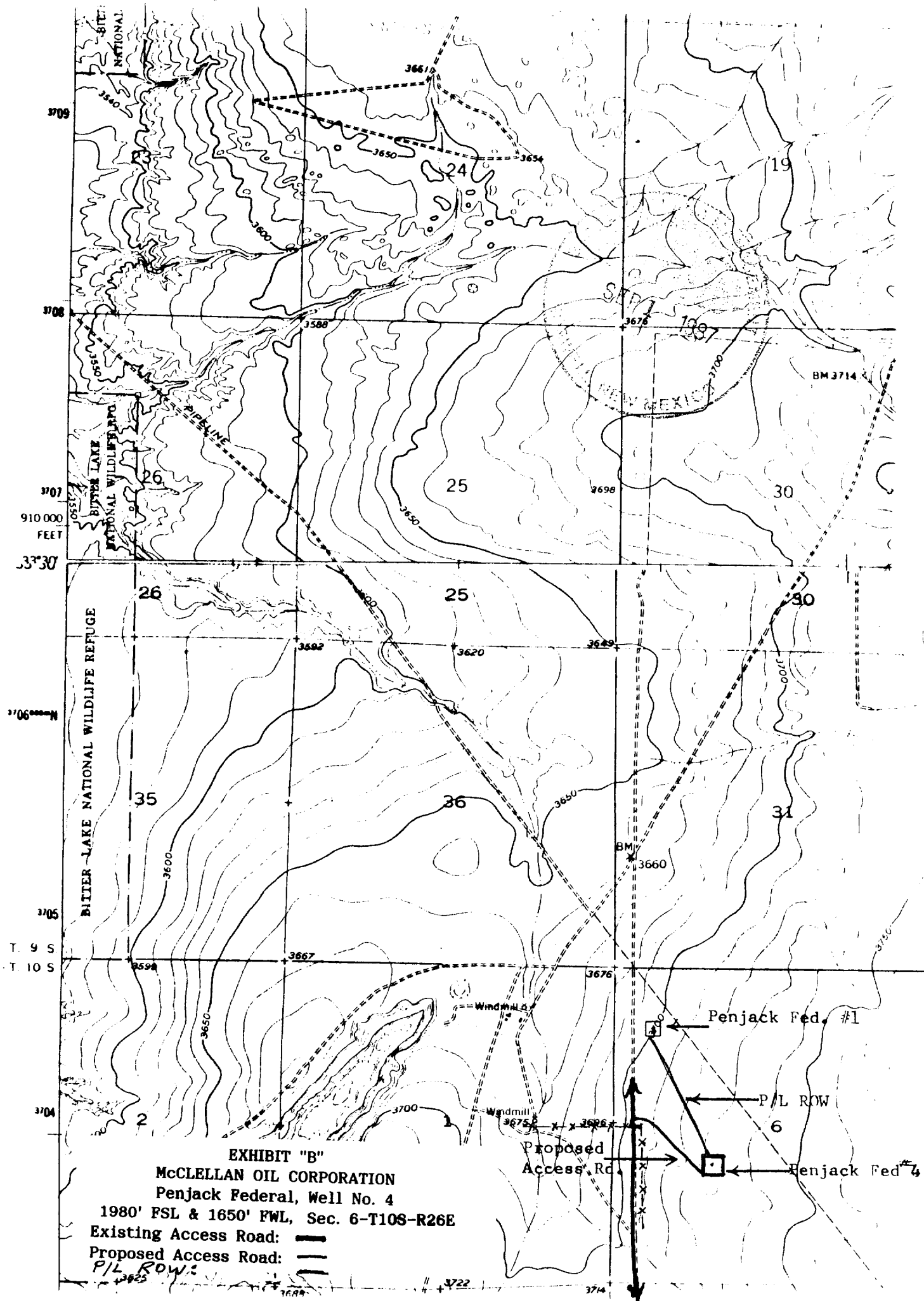
Oil: None expected.

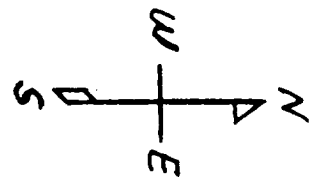
Gas: In the Abo below 4133'.

4. Proposed Casing Program: See Form 9-331C.
5. Pressure Control Equipment: See Form 9-331C and Exhibit "E".
6. Mud Program: See Form 9-331C.
7. Auxiliary Equipment: Blowout preventer, gas detector, kelly cock, pit level monitor, flow sensors and stabbing valve.
8. Testing, Logging, and Coring Program:  
  
Drill Stem Tests: None planned.  
  
Logging: From surface Casing to T.D.: G/R, CNL-LDT, DLL,  
  
Coring: None planned.
9. No abnormal pressures or temperatures are anticipated. In the event abnormal pressures are encountered the proposed mud program will be modified.

10. Anticipated starting date: September 15, 1987.  
Anticipated completion of drilling operations: Approximately 35 days.







BURN PIT

SUCTION PIT

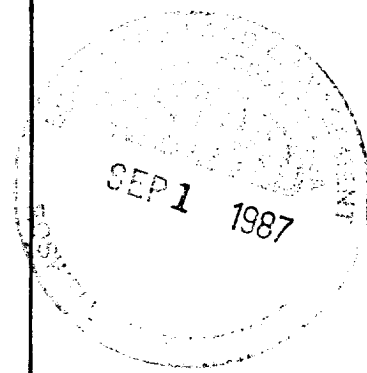
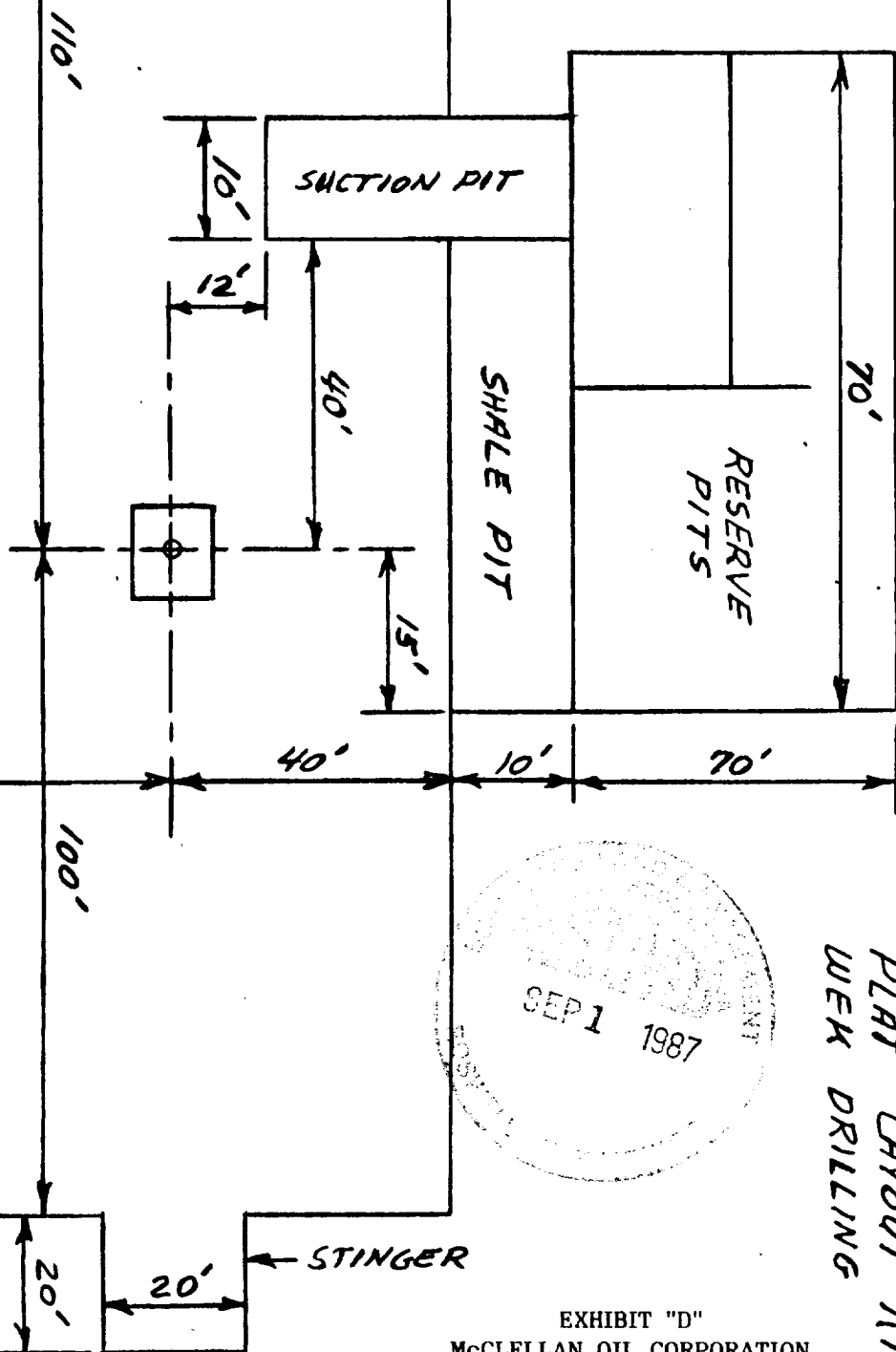
SHALE PIT

RESERVE  
PITS

CELLAR TO BE 5'x5'x5'  
IF REQUIRED

1-18-83

ACCESS  
ROAD



PLAT LAYOUT RIG 1  
WEEK DRILLING

EXHIBIT "D"  
McCLELLAN OIL CORPORATION  
Penjack Federal, Well No. 4  
Rig Layout