

CONSERVATION DIVISION

P. O. BOX 2088

Form C-102
Revised 10-1-78

STATE OF NEW MEXICO

ENERGY AND MINERALS DEPARTMENT

SANTA FE, NEW MEXICO 87501

All distances must be from the outer boundaries of the Section.

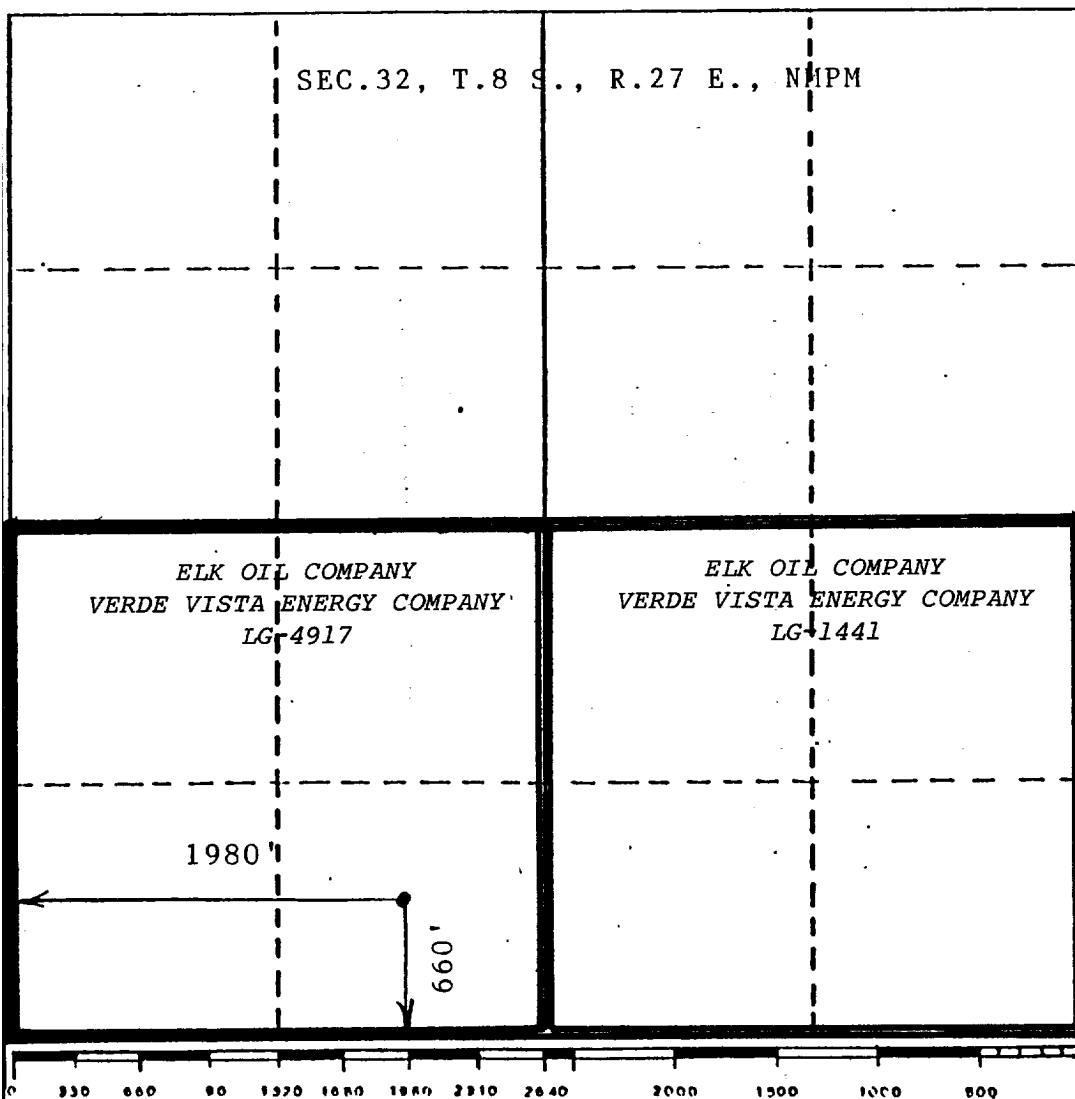
Operator ELK OIL CO.		Lease JR STATE		Well No. #1	
Unit Letter N	Section 32	Township 8 SOUTH	Range 27 EAST	County CHAVES	
Actual Footage Location of Well: 1980 feet from the WEST line and 660 feet from the SOUTH line					
Ground Level Elev. 3958	Producing Formation Penn	Pool N.	Dedicated Acreage 320		Acres

1. Outline the acreage dedicated to the subject well by colored pencil or hatchure marks on the plat below.
2. If more than one lease is dedicated to the well, outline each and identify the ownership thereof (both as to working interest and royalty).
3. If more than one lease of different ownership is dedicated to the well, have the interests of all owners been consolidated by communitization, unitization, force-pooling, etc?

☒ Yes ☐ No If answer is "yes," type of consolidation Partial Consolidation

If answer is "no," list the owners and tract descriptions which have actually been consolidated. (Use reverse side of this form if necessary.)

No allowable will be assigned to the well until all interests have been consolidated (by communitization, unitization, forced-pooling, or otherwise) or until a non-standard unit, eliminating such interests, has been approved by the Division.



CERTIFICATION

I hereby certify that the information contained herein is true and complete to the best of my knowledge and belief.

Name
Joseph J. Kelly

Position
President

Company
Elk Oil Company

Date
10/22/87

I hereby certify that the well location shown on this plat was plotted from field notes of actual surveys made by me or under my supervision, and that the same is true and correct to the best of my knowledge and belief.

Date Surveyed
OCTOBER 21, 1987

Registered Professional Engineer and/or Land Surveyor

John D. Jaquess P.E. & L.S.

Certificate No. **6200**