

UNITED STATES
DEPARTMENT OF THE INTERIOR
GEOLOGICAL SURVEYSUBMIT IN TRIPLICATE*
(Other instructions on
reverse side)Form approved.
Budget Bureau No. 42-R1425.

30-005-62562

5. LEASE DESIGNATION AND SERIAL NO.

NM-8431

6. IF INDIAN, ALLOTTEE OR TRIBE NAME

7. UNIT AGREEMENT NAME

8. FARM OR LEASE NAME

Penjack Federal

9. WELL NO.

6

10. FIELD AND POOL, OR WILDCAT

Pecos Slope Abo GAS

11. SEC., T., R., M., OR BLK.
AND SURVEY OR AREA

Sec. 7-T10S-R26E

12. COUNTY OR PARISH

Chaves

13. STATE

New Mexico

APPLICATION FOR PERMIT TO DRILL, DEEPEN, OR PLUG BACK

1a. TYPE OF WORK

DRILL ☒DEEPEN ☐PLUG BACK ☐

b. TYPE OF WELL

OIL
WELL ☐GAS
WELL ☒

OTHER

SINGLE
ZONE ☐MULTIPLE
ZONE ☐

2. NAME OF OPERATOR

McClellan Oil Corporation

3. ADDRESS OF OPERATOR

P. O. Dr. 730 Roswell, New Mexico 88202

4. LOCATION OF WELL (Report location clearly and in accordance with any State requirements.)*

At surface

1980' FSL & 660' FWL

At proposed prod. zone

Same

14. DISTANCE IN MILES AND DIRECTION FROM NEAREST TOWN OR POST OFFICE*

14 miles northeast of Roswell, NM

15. DISTANCE FROM PROPOSED*

LOCATION TO NEAREST

PROPERTY OR LEASE LINE, FT.

(Also to nearest drlg. unit line, if any)

660'

16. NO. OF ACRES IN LEASE

1514.68

17. NO. OF ACRES ASSIGNED

TO THIS WELL

160

18. DISTANCE FROM PROPOSED LOCATION*

TO NEAREST WELL, DRILLING, COMPLETED,

OR APPLIED FOR, ON THIS LEASE, FT.

1867'

19. PROPOSED DEPTH

4770'

20. ROTARY OR CABLE TOOLS

Rotary

21. ELEVATIONS (Show whether DF, RT, GR, etc.)

3790' GL

22. APPROX. DATE WORK WILL START*

November 10, 1987

23.

PROPOSED CASING AND CEMENTING PROGRAM

SIZE OF HOLE	SIZE OF CASING	WEIGHT PER FOOT	SETTING DEPTH	QUANTITY OF CEMENT
12 1/4"	8 5/8"	23#	900' or 950'	450 sx class "C" Circulate
7 7/8"	4 1/2"	10.5#	4770'	350 sx class "C"

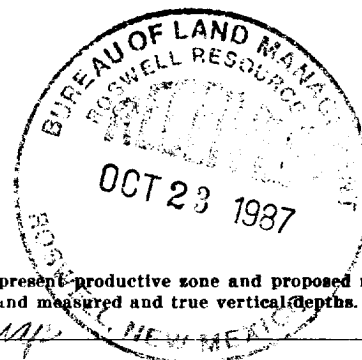
Mud Program:

Drill to top of Abo with fresh water. Will mud up 100' above Abo with 9.5 lb/gal. wt., 40 viscosity mud and 15 cc water loss.

BOP Specification:

Will install and test daily a 3000# wp Shaffer Type E double hydraulic BOP, with 4" pipe and blind rams with koomeg closing unit.

Gas is dedicated.



IN ABOVE SPACE DESCRIBE PROPOSED PROGRAM: If proposal is to deepen or plug back, give data on present productive zone and proposed new productive zone. If proposal is to drill or deepen directionally, give pertinent data on subsurface locations and measured and true vertical depths. Give blowout preventer program, if any.

24.

Agent for:

SIGNED

TITLE

McClellan Oil Corporation

DATE October 21, 1987

(This space for Federal or State office use)

PERMIT NO.

APPROVAL DATE

APPROVED BY

S/Phil Kirk

TITLE

Area Manager

DATE

NOV 5 1987

CONDITIONS OF APPROVAL, IF ANY:

APPROVAL OF THIS APPLICATION DOES NOT WARRANT OR CERTIFY THAT THE APPLICANT HOLDS LEGAL OR EQUITABLE TITLE TO THOSE RIGHTS IN THE SUBJECT LEASE WHICH WOULD ENTITLE THE APPLICANT TO CONDUCT OPERATIONS THEREON.

Please be advised that there will be no excavation of federally owned mineral material for construction of the access road or pad without payment in advance.

All distances must be from the outer boundaries of the Section.

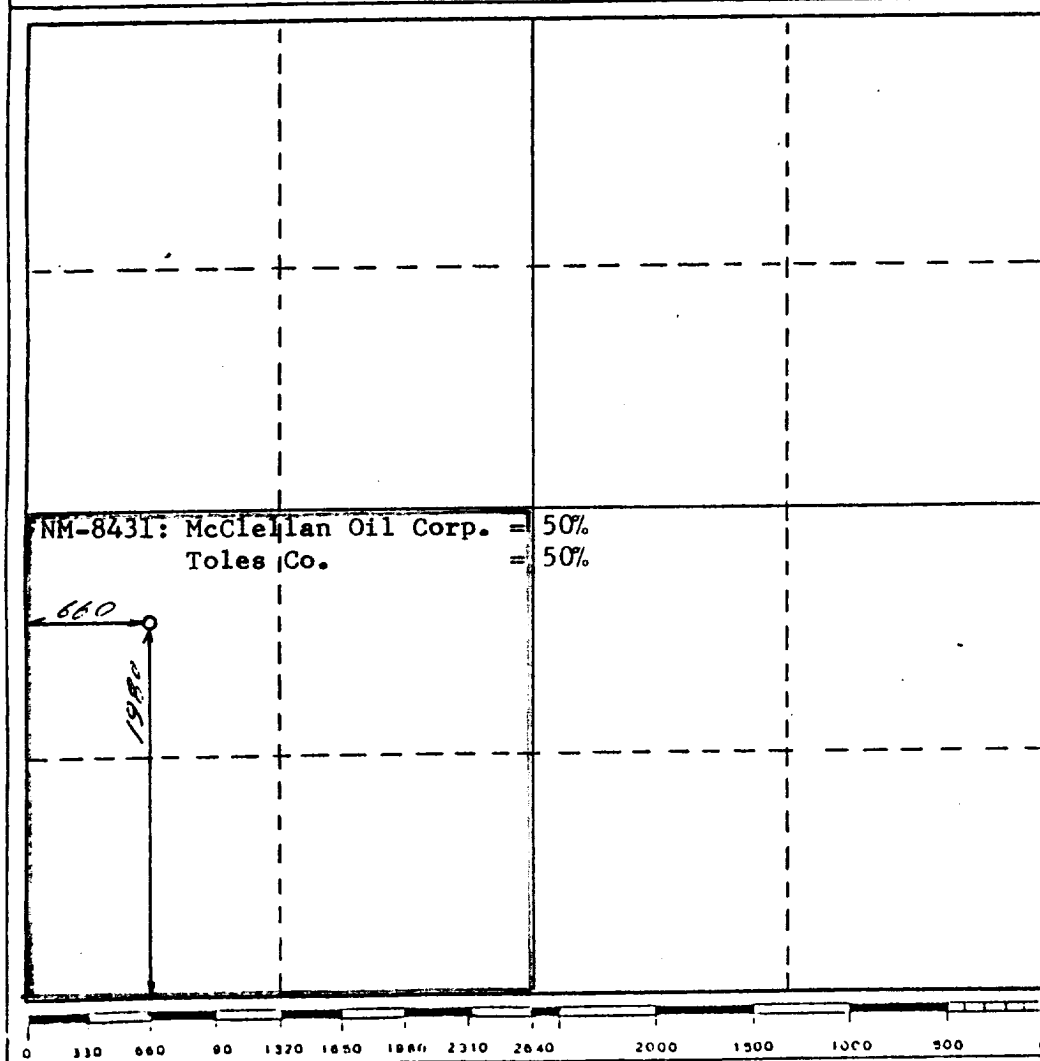
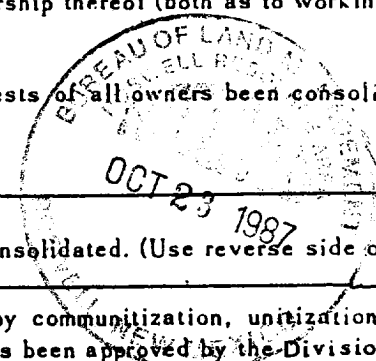
Operator McClellan Oil Corporation			Lease Penjack Federal		Well No. 6
Unit Letter L	Section 7	Township 10 South	Range 26 East	County Chaves	
Actual Footage Location of Well: 1980 feet from the South line and 660 feet from the West line					
Ground Level Elev. 3790	Producing Formation Abo		Pool S. Pecos Slope Abo LPS		Dedicated Acreage: 160 Acres

1. Outline the acreage dedicated to the subject well by colored pencil or hatchure marks on the plat below.
2. If more than one lease is dedicated to the well, outline each and identify the ownership thereof (both as to working interest and royalty).
3. If more than one lease of different ownership is dedicated to the well, have the interests of all owners been consolidated by communitization, unitization, force-pooling, etc?

☐ Yes ☐ No If answer is "yes," type of consolidation _____

If answer is "no," list the owners and tract descriptions which have actually been consolidated. (Use reverse side of this form if necessary.) _____

No allowable will be assigned to the well until all interests have been consolidated (by communitization, unitization, forced-pooling, or otherwise) or until a non-standard unit, eliminating such interests, has been approved by the Division.



CERTIFICATION

I hereby certify that the information contained herein is true and complete to the best of my knowledge and belief.

George R. Smith

Name

George R. Smith

Position

Agent for:

Company

McClellan Oil Corporation

Date

October 21, 1987

I hereby certify that the well location shown on this plat was plotted from field notes of actual surveys made by me or under my supervision, and that the same is true and correct to the best of my knowledge and belief.

13 Oct 87

Date Surveyed

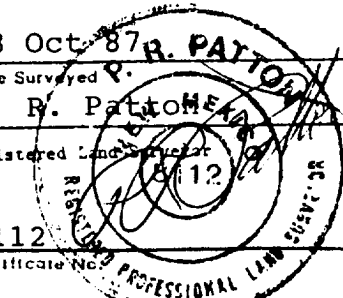
P. R. Patton

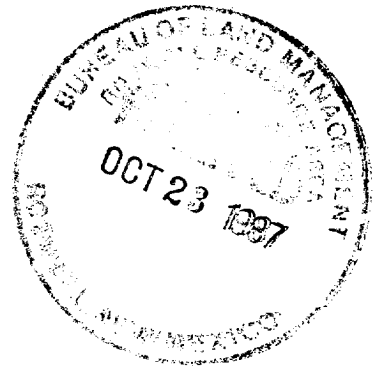
Registered Land Surveyor

8112

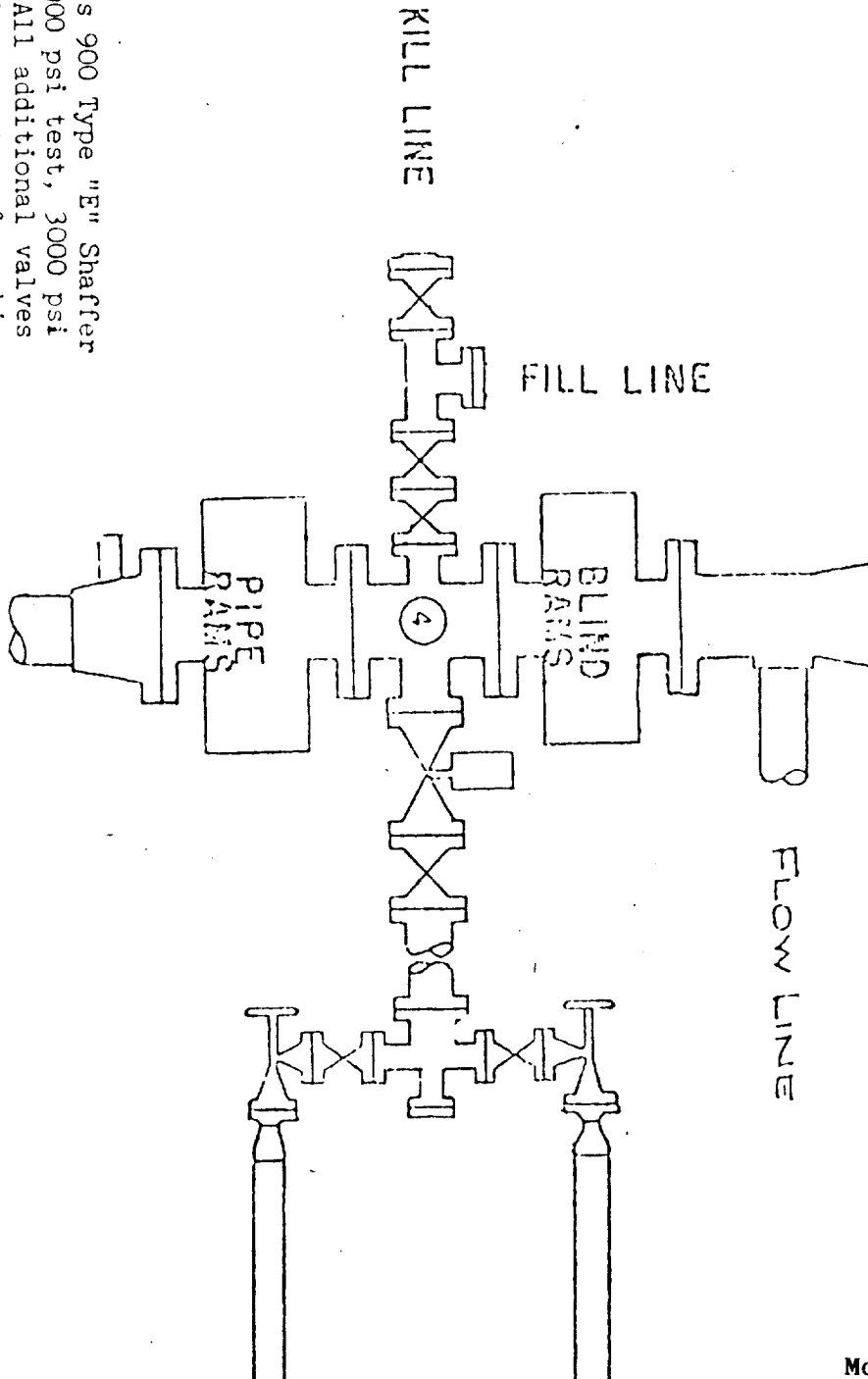
8112

Certificate No.





WEK DRILLING CO., INC. - Rig 1 & 3
BLOWOUT PREVENTER SPECIFICATION



BOP's are 10" Series 900 Type "E" Shaffer Double Hydraulic 6000 psi test, 3000 psi working pressure. All additional valves & connections are the same test & working pressures.

EXHIBIT "E"
McCLELLAN OIL CORPORATION
Penjack Federal, Well No. 5
BOP Specifications

APPLICATION FOR DRILLING

McCLELLAN OIL CORPORATION
Penjack Federal, Well No. 6
1980' FSL & 660' FWL, Sec. 7-T10S-R26E
Chaves County, New Mexico
Lease No.: NM-8431
(Development Well)



In conjunction with Form 9-331C, Application for Permit to Drill subject well, McClellan Oil Corporation submits the following items of pertinent information in accordance with BLM requirements:

1. The geologic surface formation is recent Permian with quaternary alluvium and other surficial deposits.
2. The estimated tops of geologic markers are as follows:

San Andres	820'	Abo	4170'
Glorieta	1930'	T.D.	4770'
Tubb	3420'		

3. The estimated depths at which water, oil or gas formations are anticipated to encountered:

Water: Surface water between 100' to 300'.

Oil: None expected.

Gas: In the Abo below 4170'.

4. Proposed Casing Program: See Form 9-331C.
5. Pressure Control Equipment: See Form 9-331C and Exhibit "E".
6. Mud Program: See Form 9-331C.
7. Auxiliary Equipment: Blowout preventer, gas detector, kelly cock, pit level monitor, flow sensors and stabbing valve.
8. Testing, Logging, and Coring Program:

Drill Stem Tests: None planned.

Logging: From surface Casing to T.D.: G/R, CNL-LDT, DLL,

Coring: None planned.
9. No abnormal pressures or temperatures are anticipated. In the event abnormal pressures are encountered the proposed mud program will be modified.
10. Anticipated starting date: November 10, 1987.
Anticipated completion of drilling operations: Approximately 35 days.

UNITED STATES
DEPARTMENT OF THE INTERIOR
GEOLOGICAL SURVEY

04°22'30"

1590000E

560

R. 25 E. R. 26 E.

20' 562

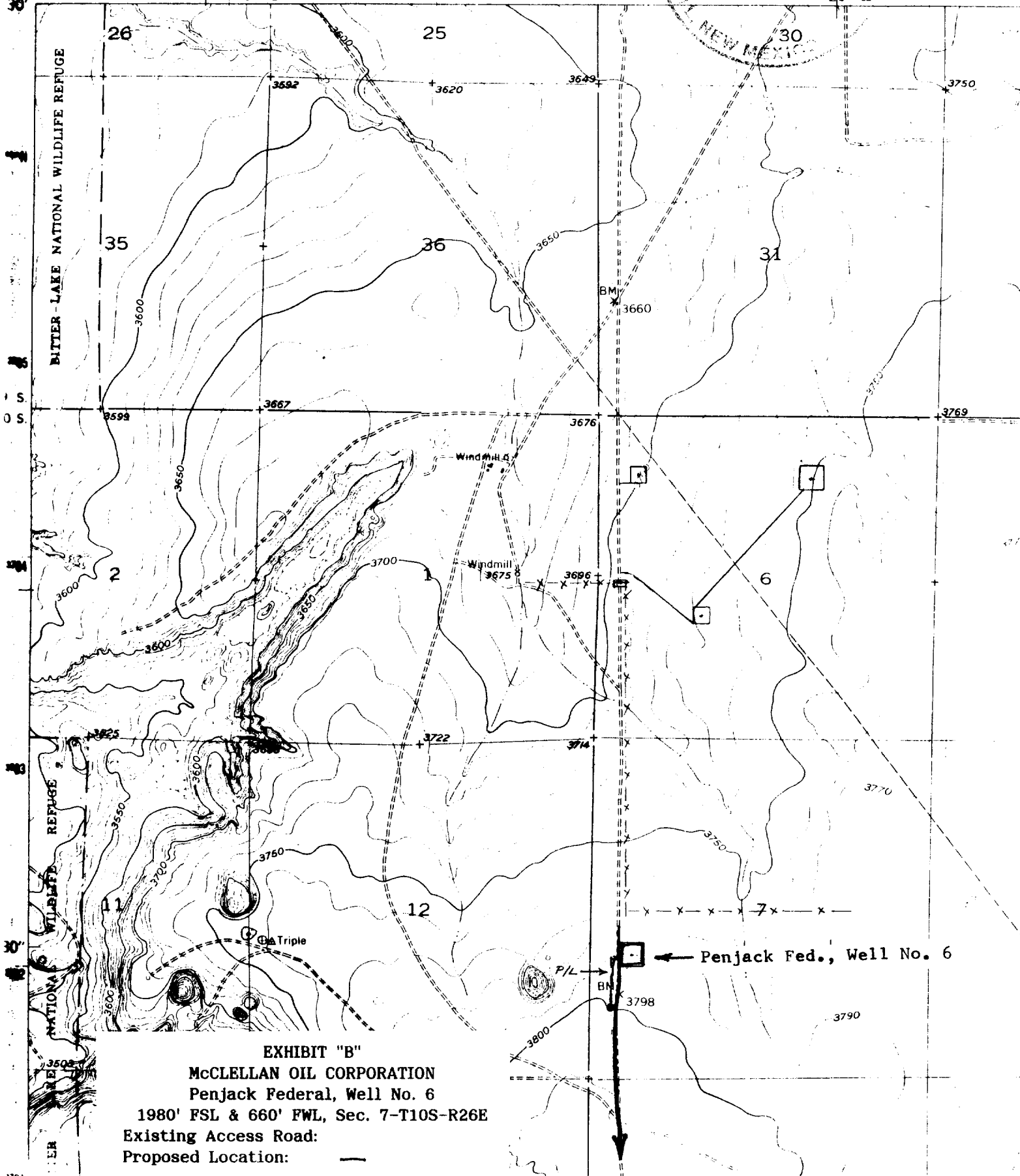
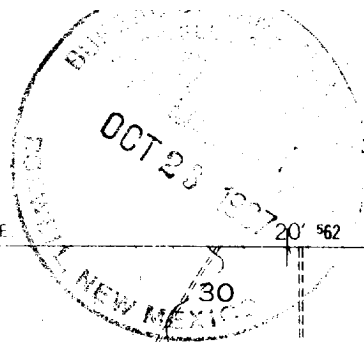


EXHIBIT "B"

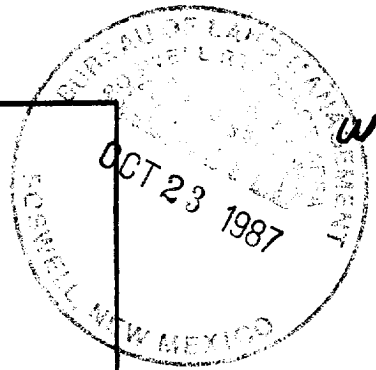
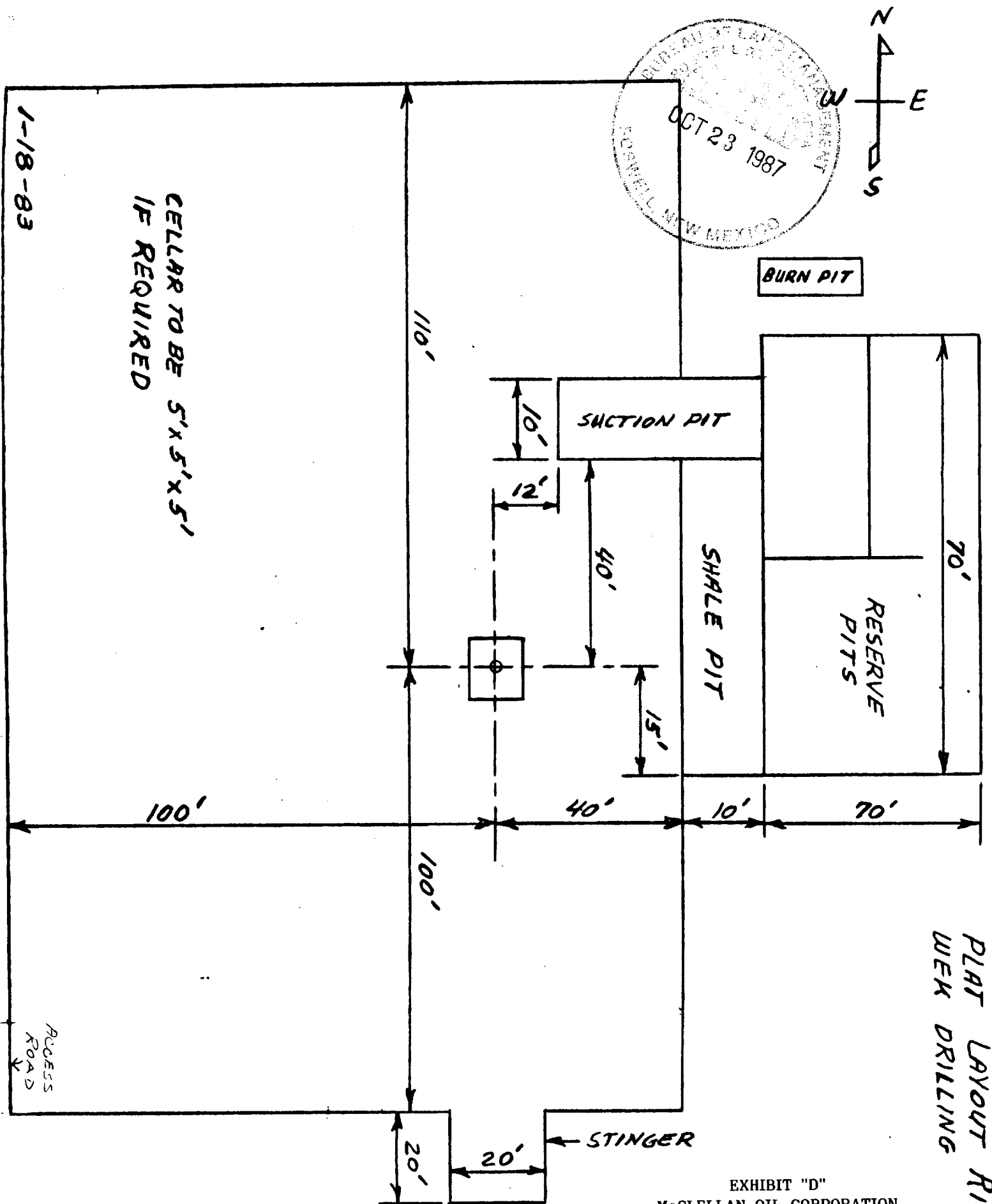
McCLELLAN OIL CORPORATION

Penjack Federal, Well No. 6

1980' FSL & 660' FWL, Sec. 7-T10S-R26E

Existing Access Road:

Proposed Location: —



PLAT LAYOUT RIG 1
WELL DRILLING

EXHIBIT "D"
McCLELLAN OIL CORPORATION
Penjack Federal, Well No. 6
Rig Layout