

Form 3160-3
(November 1983)
(formerly 9-331C)

NM Oil Cons Commission

Drawer DD

Artesia, NM 88210

SUBMIT IN '1' .PLICATE*
(Other instructions on
reverse side)

C/SF
30-005-62585
Form approved.
Budget Bureau No. 1004-0136
Expires August 31, 1985

UNITED STATES
DEPARTMENT OF THE INTERIOR
BUREAU OF LAND MANAGEMENT

APPLICATION FOR PERMIT TO DRILL, DEEPEN, OR PLUG BACK

1a. TYPE OF WORK

DRILL ☒

DEEPEN ☐

PLUG BACK ☐

b. TYPE OF WELL

OIL
WELL ☐

GAS
WELL ☒

OTHER

FEB 02 '88

SINGLE
ZONE ☐

MULTIPLE
ZONE ☐

2. NAME OF OPERATOR

Abo Petroleum Corporation

O. C. D.

3. ADDRESS OF OPERATOR

105 South Fourth Street - Artesia, NM 88210

ARTESIA, OFFICE

4. LOCATION OF WELL (Report location clearly and in accordance with any state requirements)

At surface

1980' FSL and 660' FEL

At proposed prod. zone

Same

14. DISTANCE IN MILES AND DIRECTION FROM NEAREST TOWN OR POST OFFICE

Approximately 35 miles north of Roswell, New Mexico

15. DISTANCE FROM PROPOSED*

LOCATION TO NEAREST

PROPERTY OR LEASE LINE, FT.

(Also to nearest drlg. unit line, if any)

660'

16. NO. OF

400

NO. OF ACRES ASSIGNED
TO THIS WELL

160

18. DISTANCE FROM PROPOSED LOCATION*

TO NEAREST WELL, DRILLING, COMPLETED,
OR APPLIED FOR, ON THIS LEASE, FT.

19. PROPOSED DEPTH

4200'

20. ROTARY OR CABLE TOOLS

Rotary

21. ELEVATIONS (Show whether DF, RT, GR, etc.)

4123.5' GR

22. APPROX. DATE WORK WILL START*

ASAP

23.

PROPOSED CASING AND CEMENTING PROGRAM

SIZE OF HOLE	SIZE OF CASING	WEIGHT PER FOOT	SETTING DEPTH	QUANTITY OF CEMENT
14-3/4"	10-3/4"	40.5# J-55	Approx. 1200'	750 sacks - circulate
7-7/8"	4-1/2"	9.5# J-55	TD	500 sacks

We propose to drill and test the Abo and intermediate formations. Approximately 1200' of surface casing will be set and cement circulated to shut off gravel and cavings. If needed for lost circulation, 8-5/8" intermediate casing will be run to 1500' and cemented with enough cement circulated to tie back into the surface casing. Temperature Survey will be run to determine cement top. If commercial, production casing will be run and cemented with adequate cover, perforated and stimulated as needed for production.

MUD PROGRAM: FW gel/LCM to 1200', brine to 3500', SW gel and starch to TD.

BOP PROGRAM: BOP's will be installed at the offset and tested daily.

GAS NOT DEDICATED

EXPIRING LEASE - JANUARY 31, 1988

IN ABOVE SPACE DESCRIBE PROPOSED PROGRAM: If proposal is to deepen or plug back, give data on present productive zone and proposed new productive zone. If proposal is to drill or deepen directionally, give pertinent data on subsurface locations and measured and true vertical depths. Give blowout preventer program, if any.

24.

SIGNED

Cy Cowan

TITLE Regulatory Agent

DATE Dec. 31, 1987

(This space for Federal or State office use)

PERMIT NO.

APPROVAL DATE

APPROVED BY

S/Levi Deike, Acting

TITLE

Area Manager

DATE

JAN 29 1988

CONDITIONS OF APPROVAL, IF ANY:

APPROVAL OF THIS APPLICATION DOES NOT WARRANT OR
CERTIFY THAT THE APPLICANT HOLDS LEGAL OR EQUITABLE
TITLE TO THOSE RIGHTS IN THE SUBJECT LEASE WHICH
ENTITLES THE APPLICANT TO CONDUCT OPERATIONS THEREON.

PLEASE BE ADVISED THAT THERE WILL BE NO EXCAVATION
OF FEDERALLY OWNED MINERAL MATERIAL FOR CONSTRUCTION
OF THE ACCESS ROAD OR PAD WITHOUT PAYMENT
IN ADVANCE.

on knowingly and willfully to make to any department or agency of the



**NEW MEXICO OIL CONSERVATION COMMISSION
WELL LOCATION AND ACREAGE DEDICATION PLAT**

Form C-102
Supersedes C-128
Effective 1-1-65

All distances must be from the outer boundaries of the Section.

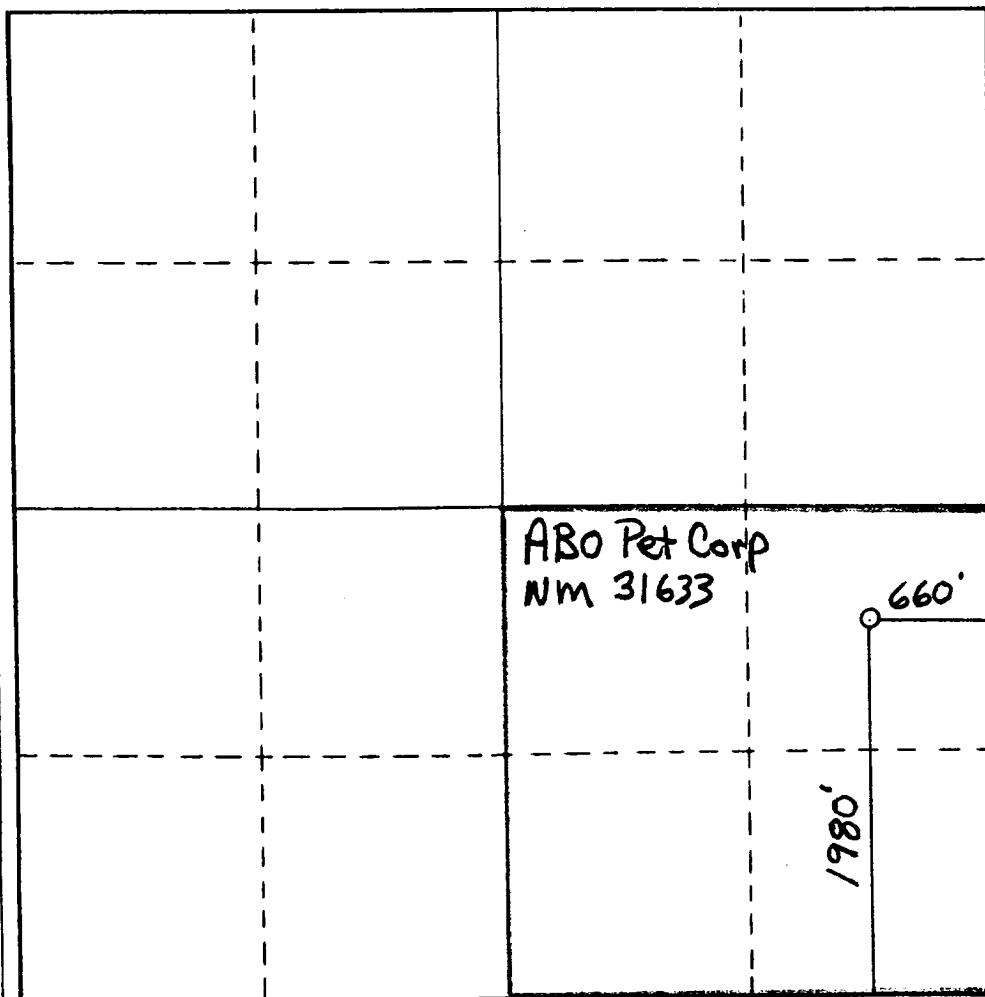
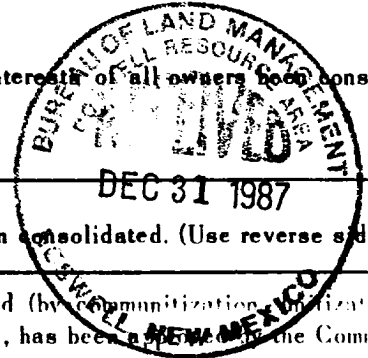
Operator ABO YATES PETROLEUM CORPORATION			Lease POZNA FEDERAL		Well No. 1
Unit Letter I	Section 30	Township 5S	Range 24E	County Chaves	
Actual Footage Location of Well:					
1980 feet from the South line and		660 feet from the East line			
Ground Level Elev. 4123.5'	Producing Formation ABO		Pool PECOS Slope ABO	Dedicated Acreage: 160 Acres	

1. Outline the acreage dedicated to the subject well by colored pencil or hatchure marks on the plat below.
2. If more than one lease is dedicated to the well, outline each and identify the ownership thereof (both as to working interest and royalty).
3. If more than one lease of different ownership is dedicated to the well, have the interests of all owners been consolidated by communitization, unitization, force-pooling, etc?

☐ Yes ☒ No If answer is "yes," type of consolidation _____

If answer is "no," list the owners and tract descriptions which have actually been consolidated. (Use reverse side of this form if necessary.) _____

No allowable will be assigned to the well until all interests have been consolidated (by communitization, unitization, forced-pooling, or otherwise) or until a non-standard unit, eliminating such interests, has been approved by the Commission.



CERTIFICATION

I hereby certify that the information contained herein is true and complete to the best of my knowledge and belief.

Cy Cowan
Name

Cy Cowan

Position

Regulatory Agent

Company

Yates Petroleum Corporation

Date

December 31, 1987

I hereby certify that the well location shown on this plat was plotted from field notes of actual surveys made by me or under my supervision, and that the same is true and correct to the best of my knowledge and belief.

12-29-87

Date Surveyed

Registered Professional Engineer and/or Land Surveyor

[Signature]
Certificate No.

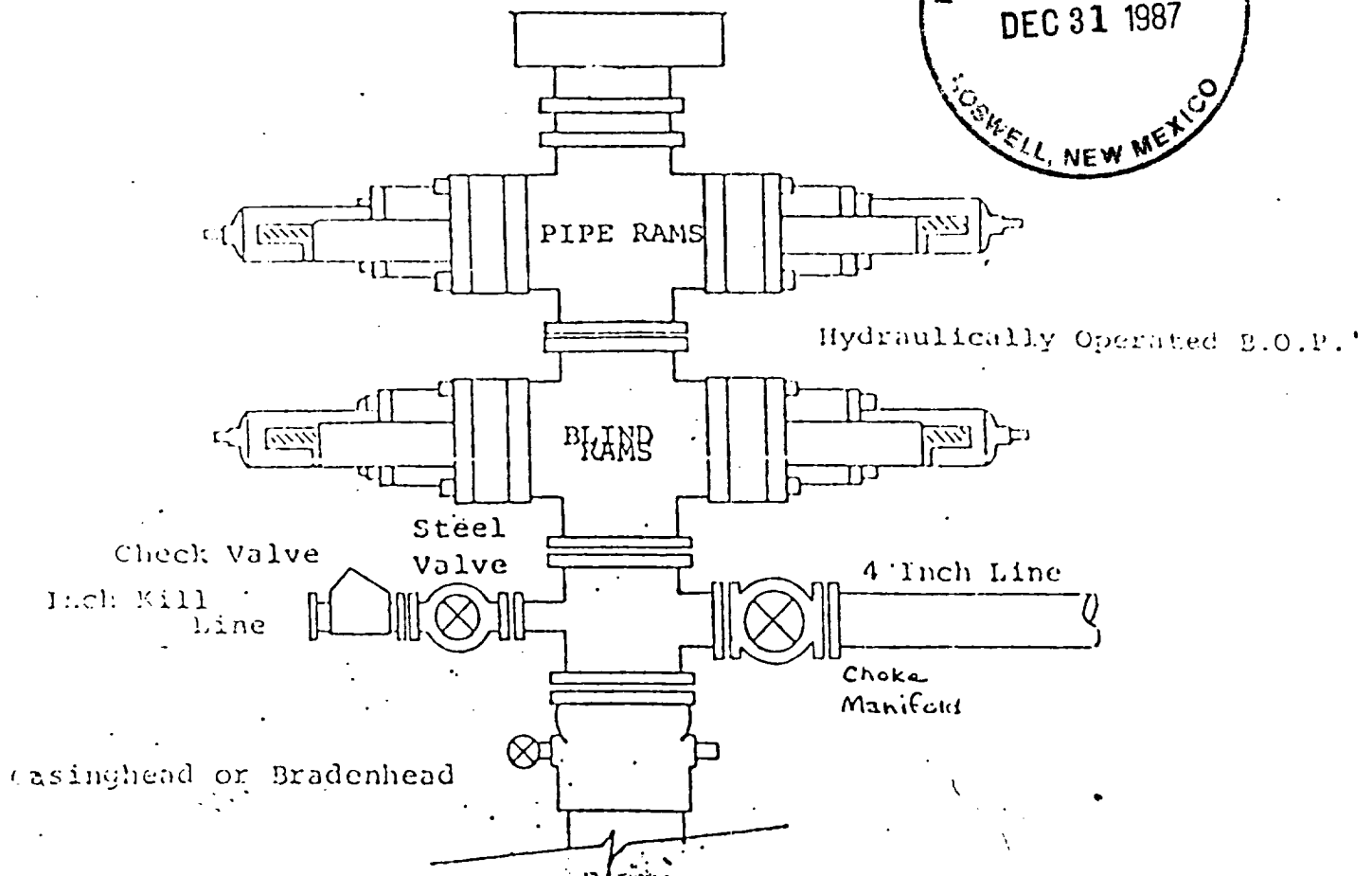
3640



EXHIBIT B

BDP DIAGRAM

RATED 3000[#]



ABO PETROLEUM CORPORATION
Pozna Federal #1
1980' FSL and 660' FEL of
Section 30-T5S-R24E
Chaves County, New Mexico



In conjunction with Form 9-331C, Application for Permit to Drill subject well, Yates Petroleum Corporation submits the following ten items of pertinent information in accordance with BLM requirements.

1. The geological surface formation is sand and alluvium.
2. The estimated tops of geologic markers are as follows:

San Andres	488'
Glorieta	1373'
Yeso	1494'
Abo	3557'
TD	4200'
3. The estimated depths at which anticipated water, oil or gas formations are expected to be encountered:

Water: Approximately 200-300'
Oil or Gas: Abo 3557'
4. Proposed Casing Program: See Form 9-331C.
5. Pressure Control Equipment: See Form 9-331C.
6. Mud Program: See Form 9-331C.
7. Auxiliary Equipment: Kelly cock, pit level indicators and flow sensor equipment; sub with full opening valve on floor, drill pipe connection.
8. Testing, Logging and Coring Program:

DST's: As warranted
Logging: CNL/LDC from TD to casing with GR-CNL on to surface
Samples: Surface casing to TD
Coring: None
9. No abnormal pressures or temperatures are anticipated.
10. Anticipated starting date: As soon as possible after approval.

ABO Petroleum Corp
Pozna 7ED #1
1980 FSL + 660 FEL
Sec 30 T55 R24E
Chaves County
NM

NM 31633
ROADON
LEASE

MESA

Pozna 7ED #1

Griffa 3

Jess Well

Huggins 4201

R23E
R24E

R24E
R25E

