

DEPARTMENT OF THE INTERIOR

BUREAU OF LAND MANAGEMENT

SUBMIT IN TITLE CATEGORY
(Other instructions on reverse side)
RECEIVED

30-005-62606
Form approved.
Budget Bureau No. 1004-0136
Expires August 31, 1985

APPLICATION FOR PERMIT TO DRILL, DEEPEN, OR PLUG BACK

1a. TYPE OF WORK

DRILL ☒

DEEPEN ☐

PLUG BACK ☐

b. TYPE OF WELL

OIL WELL ☐

GAS WELL ☒

OTHER

SINGLE ZONE ☒

MULTIPLE ZONE ☐

2. NAME OF OPERATOR

McKay Oil Corporation

3. ADDRESS OF OPERATOR

P.O. Box 2014, Roswell, New Mexico 88202

4. LOCATION OF WELL (Report location clearly and in accordance with any State requirements*)

At surface

587' FEL & 995' FNL, NE/4NE/4, Unit letter A

At proposed prod. zone

Same

14. DISTANCE IN MILES AND DIRECTION FROM NEAREST TOWN OR POST OFFICE*

25 miles Northwest of Roswell, New Mexico

15. DISTANCE FROM PROPOSED*

LOCATION TO NEAREST

PROPERTY OR LEASE LINE, FT.

(Also to nearest drlg. unit line, if any)

587'

16. NO. OF ACRES IN LEASE

600

17. NO. OF ACRES ASSIGNED

TO THIS WELL

160

18. DISTANCE FROM PROPOSED LOCATION*

TO NEAREST WELL, DRILLING, COMPLETED,
OR APPLIED FOR, ON THIS LEASE, FT.

N/A

19. PROPOSED DEPTH

3,400'

20. ROTARY OR CABLE TOOLS

Rotary

21. ELEVATIONS (Show whether DF, RT, GR, etc.)

4082' GR

22. APPROX. DATE WORK WILL START*

ASAP

23. PROPOSED CASING AND CEMENTING PROGRAM

SIZE OF HOLE	SIZE OF CASING	WEIGHT PER FOOT	SETTING DEPTH	QUANTITY OF CEMENT
12 1/4"	8 5/8"	24.0#	900'±	Class 'C' to surface
7 7/8"	4 1/2"	10.5#	T.D.	Cement to 600' above T/Pay and/or to isolate all oil, gas and water zones

Propose to drill and test the Abo formation. Potential zones of interest in the Abo formation will be perforated and stimulated as needed for production.

B.O.P. Program; B.O.P. will be installed on 8 5/8" casing and tested daily.

Gas is not dedicated.

POST 10#1
NK & API
4-8-88

MAR 3 1988

IN ABOVE SPACE DESCRIBE PROPOSED PROGRAM: If proposal is to deepen or plug back, give data on present productive zone and proposed new productive zone. If proposal is to drill or deepen directionally, give pertinent data on subsurface locations and measured and true vertical depths. Give blowout preventer program, if any.

24.

SIGNED

Cary W. Franklin

TITLE

Agent

DATE March 3, 1988

(This space for Federal or State office use)

PERMIT NO.

APPROVAL DATE

APPROVED BY

S/Phil Kirk

TITLE

Area Manager

DATE

MAR 29 1988

PLEASE BE ADVISED THAT THERE WILL BE NO EXCAVATION OF FEDERALLY OWNED MINERAL MATERIAL FOR CONSTRUCTION OF THE ACCESS ROAD OR PAD WITHOUT PAYMENT IN ADVANCE.

*See Instructions On Reverse Side

APPROVAL OF THIS APPLICATION DOES NOT WARRANT OR CERTIFY THAT THE APPLICANT HOLDS LEGAL OR EQUITABLE TITLE TO THOSE RIGHTS IN THE SUBJECT LEASE WHICH WOULD ENTITLE THE APPLICANT TO CONDUCT OPERATIONS THEREON.

Title 18 U.S.C. Section 1001, makes it a crime for any person knowingly and willfully to make to any department or agency of the United States any false, fictitious or fraudulent statements or representations as to any matter within its jurisdiction.

All distances must be from the outer boundaries of the Section.

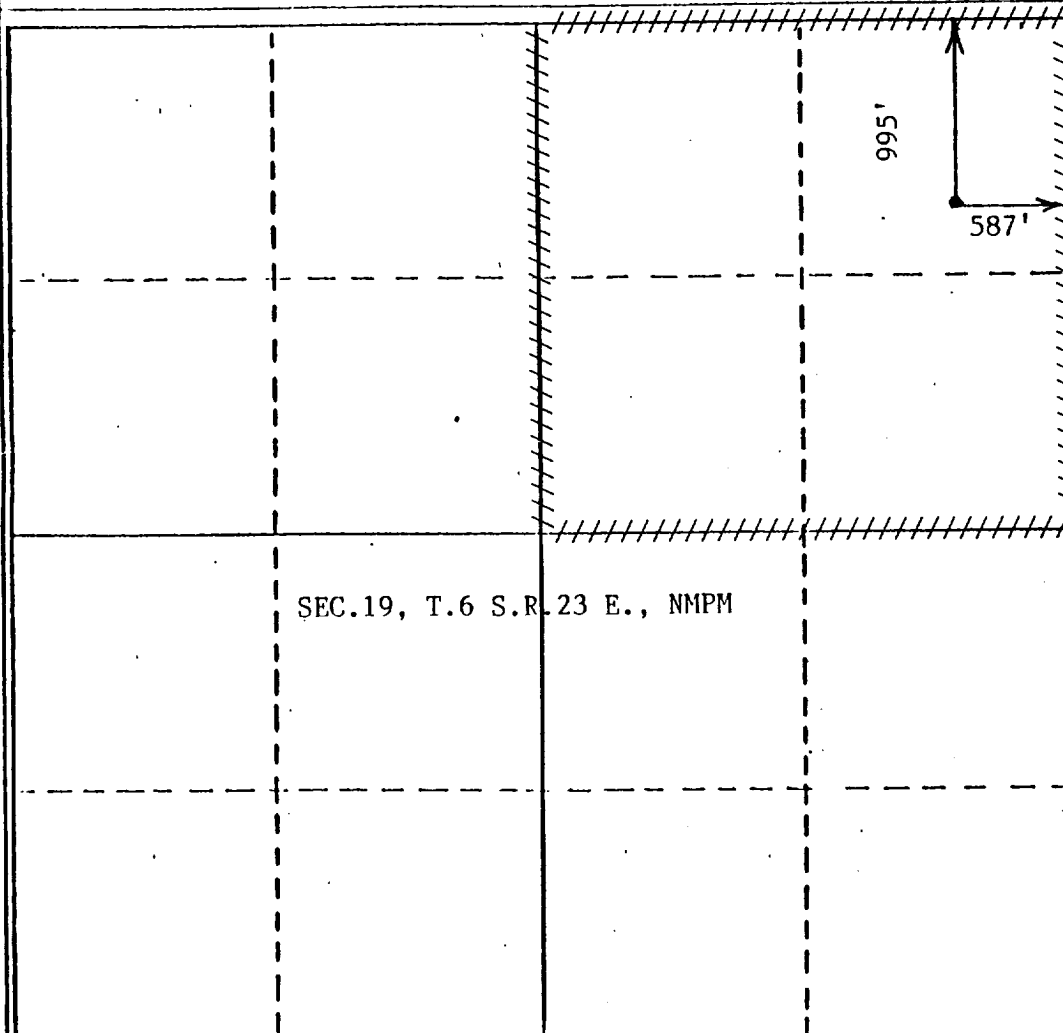
Operator McKAY OIL CORP.		Lease M & M FEDERAL		Well No. #5
Unit Letter A	Section 19	Township 6 SOUTH	Range 23 EAST	County CHAVES
Actual Footage Location of Well: 587 feet from the EAST line and 995 feet from the NORTH line				
Ground Level Elev. 4082	Producing Formation Abo	Pool W. Pecos Slope-Abo	Dedicated Acreage 160 Acres	

1. Outline the acreage dedicated to the subject well by colored pencil or hatchure marks on the plat below.
2. If more than one lease is dedicated to the well, outline each and identify the ownership thereof (both as to working interest and royalty).
3. If more than one lease of different ownership is dedicated to the well, have the interests of all owners been consolidated by communitization, unitization, force-pooling, etc?

☐ Yes ☐ No If answer is "yes," type of consolidation _____

If answer is "no," list the owners and tract descriptions which have actually been consolidated. (Use reverse side of this form if necessary.) _____

No allowable will be assigned to the well until all interests have been consolidated (by communitization, unitization, forced-pooling, or otherwise) or until a non-standard unit, eliminating such interests, has been approved by the Division.



CERTIFICATION

I hereby certify that the information contained herein is true and complete to the best of my knowledge and belief.

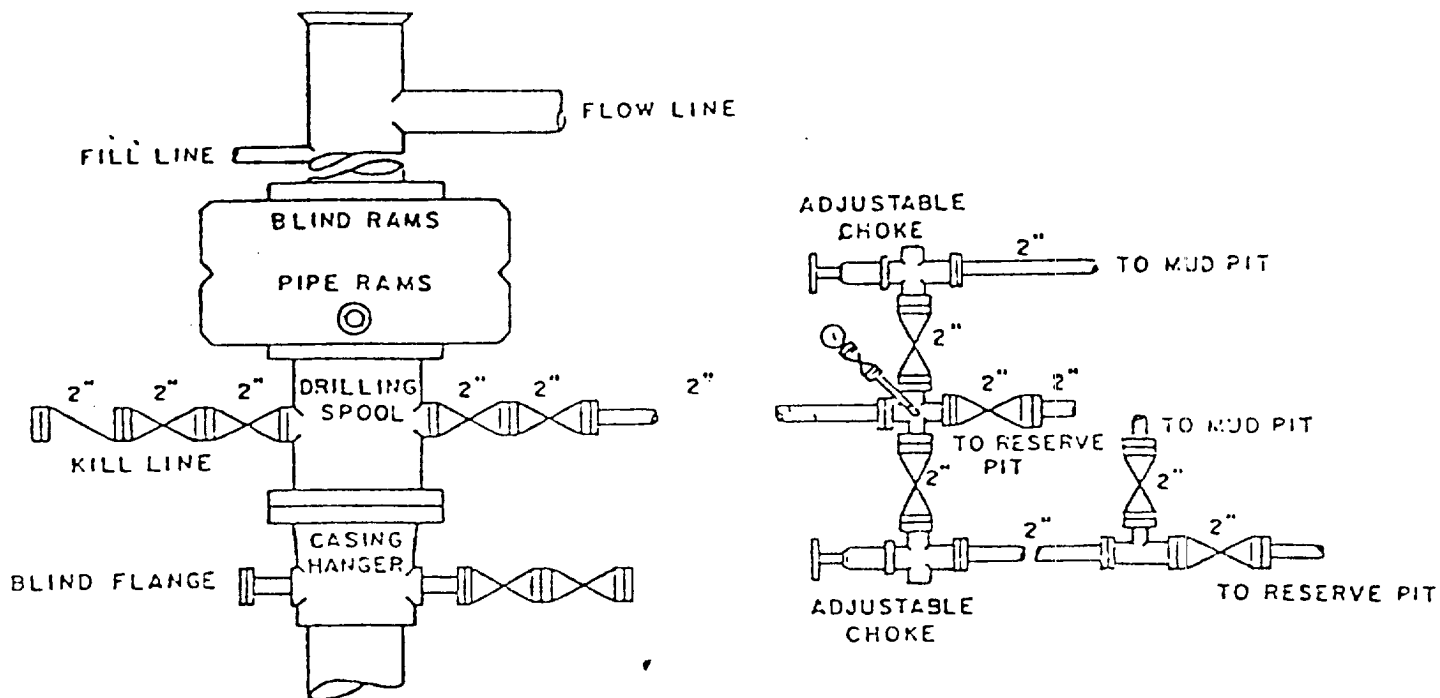
Terry W. Franklin

Name
Terry W. Franklin
Position
Agent
Company
McKay Oil Corporation
Date
March 3, 1988

I hereby certify that the well location shown on this plat was plotted from field notes of actual surveys made by me or under my supervision, and that the same is true and correct to the best of my knowledge and belief.

JOHN D. JAQUES
Date Surveyed
JANUARY 27, 1988
Registered Professional Engineer
and/or Land Surveyor
6290
John D. Jaques, P.E. & L.S.
Certificate No. **6290**

Exhibit 'D'
MCKAY OIL CORPORATION
M & M Federal No. 5
NE/4NE/4, Sec. 19-6S-23E
Chaves County, N.M.



BOP DIAGRAM

3000# Working Pressure
Rams Operated Daily



SUPPLEMENTAL DRILLING DATA

McKAY OIL CORPORATION
M & M Federal No. 5
NE/4NE/4 Sec. 19-6S-23E
Chaves County, N.M.

NM 32324

The following items supplement Form 9-331C in accordance with instructions contained in Oil & Gas Order No. 1:

1. SURFACE FORMATION: San Andres
2. ESTIMATED TOPS OF GEOLOGIC MARKERS:

Yeso	- 620'
Tubb	- 2204'
Abo	- 2884'
3. ESTIMATED DEPTHS TO WATER, OIL OR GAS FORMATION:

Fresh water	- In surface formations above 600'
Gas	- In Abo formation below 2884'
4. PROPOSED CASING PROGRAM: See Form 9-331C
5. PRESSURE CONTROL EQUIPMENT: Blowout preventer stack will consist of at least a double-ram blowout preventer rated to 3000#WP. A sketch of the BOP is attached.
6. CIRCULATING MEDIUM:

0'- 600'	Lime and gel, spud mud, viscosity 32 to 34 seconds.
600'- 2784'	Fresh water
2784'- TD	Start mudding up at 2784'; viscosity 36 to 38 seconds; water loss 10 cc or less; 3-5% Diesel; 2 KCL

Mud additives will be used to control water loss.
7. AUXILIARY EQUIPMENT: full-opening kelly cock, to fit the drill string in use, will be kept on the rig floor at all times.

8. TESTING, LOGGING AND CORING PROGRAM:
Samples: Catch samples form surface to TD.
DST'S: None
Logging: GR-CNL, Dual Lateral MSFL from
surface to TD.
Coring: None
9. ABNORMAL PRESSURES, TEMPERATURES OR HYDROGEN SULFIDE:
None anticipated.
10. ANTICIPATED STARTING DATE: Commence drilling operations
ASAP.



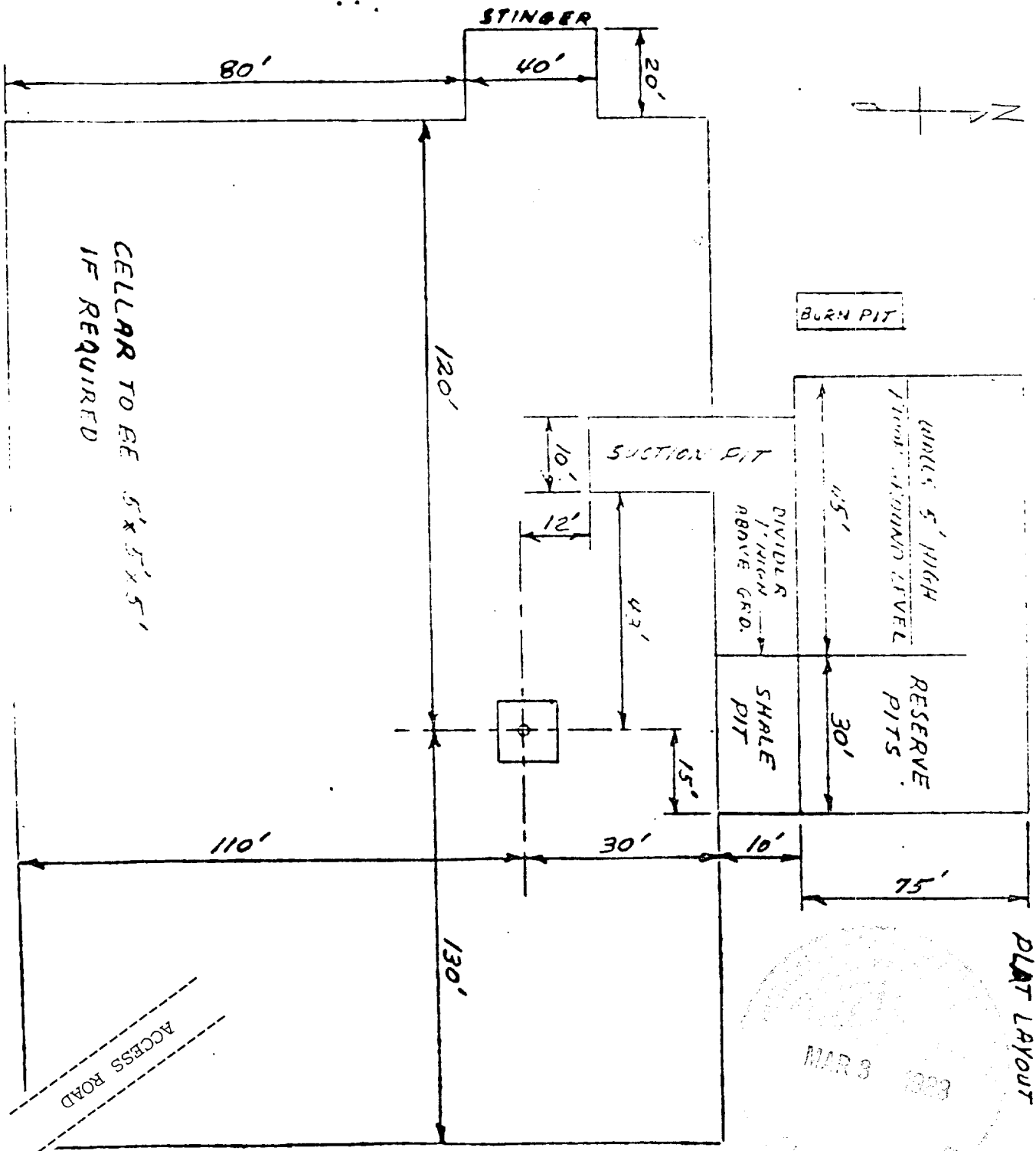


Exhibit 'C'

MCKAY OIL CORPORATION

M & M Federal No. 5

NE/4NE/4, Sec. 19-6S-23E

Chaves County, N.M.

