

STATE OF NEW MEXICO  
ENERGY AND MINERALS DEPARTMENT

OIL CONSERVATION DIVISION  
P. O. BOX 2088  
SANTA FE, NEW MEXICO 87501

30-005-62634  
Form C-101  
Revised 10-1-78

NO. OF COPIES RECEIVED	
DISTRIBUTION	
SANTA FE	✓
FILE	✓
U.S.G.S.	✓
LAND OFFICE	✓
OPERATOR	✓

JUL 05 '88

5A. Indicate Type of Lease  
STATE  FEE   
5. State Oil & Gas Lease No.

APPLICATION FOR PERMIT TO DRILL, DEEPEN, OR PLUG BACK

O.C.D.  
ARTESIA, OFFICE

1a. Type of Work  
5. Type of Well DRILL  DEEPEN  PLUG BACK   
OIL WELL  GAS WELL  OTHER  SINGLE ZONE  MULTIPLE ZONE

2. Name of Operator  
YATES EXPLORATION COMPANY, INC.

3. Address of Operator  
P. O. BOX 0, Albuquerque, NM 87103

4. Location of Well  
UNIT LETTER L LOCATED 2280' FEET FROM THE South LINE  
AND 330' FEET FROM THE West LINE OF SEC. 20 TWP. 10S RGE. 28E NMPM

7. Unit Agreement Name  
8. Farm or Lease Name  
J. P. WHITE "D"  
9. Well No.  
10  
10. Field and Pool, or Willcat  
 Racetrack SA

12. County  
CHAVES

19. Proposed Depth  
2350'  
19A. Formation  
San Andres  
20. Rotary or C.T.  
Rotary

21. Elevations (Show whether DF, RT, etc.)  
3764.2  
21A. Kind & Status Plug. Bond  
One Well  
21B. Drilling Contractor  
Pecos Well Service  
22. Approx. Date Work will start  
Immediately

PROPOSED CASING AND CEMENT PROGRAM

SIZE OF HOLE	SIZE OF CASING	WEIGHT PER FOOT	SETTING DEPTH	SACKS OF CEMENT	EST. TOP
11 3/4"	7 7/8"	20#	335'	200SX	Surface
6 1/2"	4 1/2"	9.5#	TD	125SX	

We plan to drill a 11 3/4" hole to 335' and set 7 7/8" casing, texas pattern guide shoe and two centralizers. 7 7/8" will be cemented with 200 sacks class C cement circulated to surface. A 6 1/2" hole will be drilled to approximately 2350'. Density and induction logs will be run and depending on the outcome of the well, it will be P & A's or 4 1/2" casing will be run.

POST 10 #1  
NL & API  
8-12-88

180  
2/8/89

IN ABOVE SPACE DESCRIBE PROPOSED PROGRAM; IF PROPOSAL IS TO DEEPEN OR PLUG BACK, GIVE DATA ON PRESENT PRODUCTIVE ZONE AND PROPOSED NEW PRODUCTIVE ZONE. GIVE BLOWOUT PREVENTER PROGRAM, IF ANY.

I hereby certify that the information above is true and complete to the best of my knowledge and belief.

Signed Deby McBride Title Drilling Secretary Date July 1, 1988

(This space for State Use)

Original Signed By

APPROVED BY Mike Williams TITLE \_\_\_\_\_ DATE AUG 8 1988

CONDITIONS OF APPROVAL, IF ANY:

N. MEXICO OIL CONSERVATION COMMISS.  
WELL LOCATION AND ACREAGE DEDICATION PLAT

Form C-102  
Supersedes C-128  
Effective 1-1-65

All distances must be from the outer boundaries of the Section

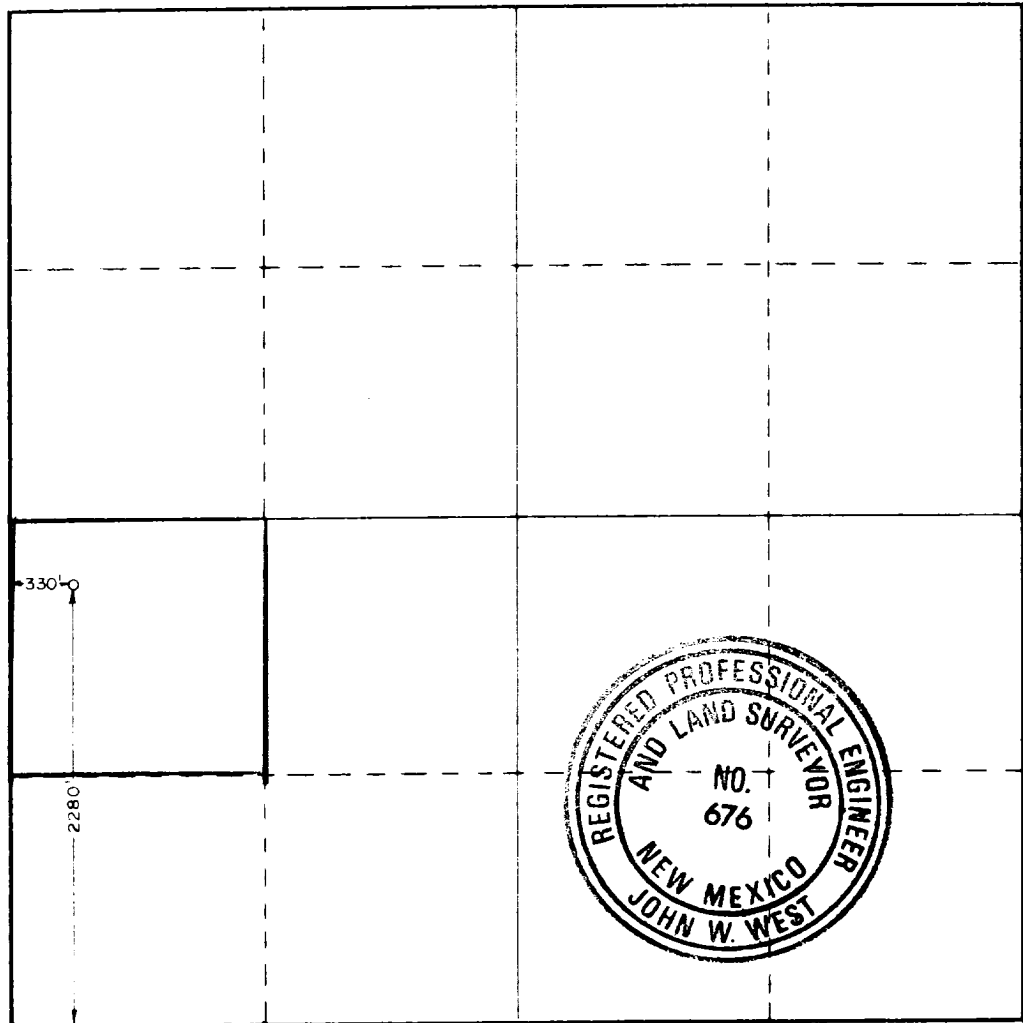
Operator <b>YATES EXPLORATION COMPANY, INC.</b> <del>GIBOLT ENERGY CORP.</del>		Lease J.P. WHITE "D"		Well No. 10
Int. Letter L	Section 20	Township 10 SOUTH	Range 28 EAST	County CHAVES
Actual Surface Location of Well: 2280 feet from the SOUTH line and 330 feet from the WEST line				
Ground Level Elev. 3764.2	Producing Formation San Andres	Pool Racetrack SA	Dedicated Acreage: 40 Acres	

1. Outline the acreage dedicated to the subject well by colored pencil or hachure marks on the plat below.
2. If more than one lease is dedicated to the well, outline each and identify the ownership thereof (both as to working interest and royalty).
3. If more than one lease of different ownership is dedicated to the well, have the interests of all owners been consolidated by communitization, unitization, force-pooling, etc?

Yes  No If answer is "yes," type of consolidation \_\_\_\_\_

If answer is "no," list the owners and tract descriptions which have actually been consolidated. (Use reverse side of this form if necessary.) All leases are held by operator and participating parties.

No allowable will be assigned to the well until all interests have been consolidated (by communitization, unitization, forced-pooling, or otherwise) or until a non-standard unit, eliminating such interests, has been approved by the Commission.



CERTIFICATION

I hereby certify that the information contained herein is true and complete to the best of my knowledge and belief.

*Betty McBride*

Name Betty McBride

Position Drilling Secretary

Company YATES EXPLORATION CO., INC.

Date JULY 1, 1988

I hereby certify that the well location shown on this plat was plotted from field notes of actual surveys made by me or under my supervision, and that the same is true and correct to the best of my knowledge and belief.

Date Surveyed January 19, 1988

Registered Professional Engineer and or Land Surveyor

*John W. West*

Certificate No JOHN W. WEST, 676  
RONALD J. EIDSON, 3239