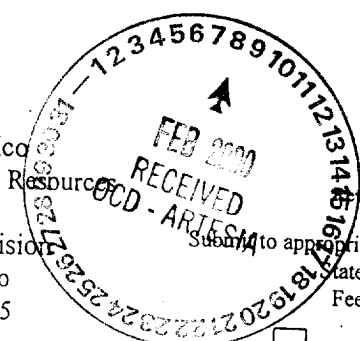


*cl/f  
BGM  
9/2  
of*

District I  
1625 N. French Dr., Hobbs, NM 88240  
District II  
811 South First, Artesia, NM 88210  
District III  
1000 Rio Brazos Road, Aztec, NM 87410  
District IV  
2040 South Pacheco, Santa Fe, NM 87505

State of New Mexico  
Energy Minerals and Natural Resources  
Oil Conservation Division  
2040 South Pacheco  
Santa Fe, NM 87505



Form C-101  
Revised March 17, 1999  
Submit to appropriate District Office  
State Lease - 6 Copies  
Fee Lease - 5 Copies

AMENDED REPORT

**APPLICATION FOR PERMIT TO DRILL, RE-ENTER, DEEPEN, PLUGBACK, OR ADD A ZONE**

Operator Name and Address YATES PETROLEUM CORPORATION 105 South Fourth Street Artesia, New Mexico 88210		OGRID Number 025575
Property Code 12147	Property Name Conejo RH State	API Number 30-005-63233
		Well No. 5

UL or lot no.	Section	Township	Range	Lot Idn	Feet from the	North/South line	Feet from the	East/West line	County
F	2	7S	25E		1500'	North	1980'	West	Chaves

UL or lot no.	Section	Township	Range	Lot Idn	Feet from the	North/South line	Feet from the	East/West line	County
Proposed Pool 1 Wildcat Precambrian					Proposed Pool 2				

Work Type Code N	Well Type Code G	Cable/Rotary R	Lease Type Code S	Ground Level Elevation 3758'
Multiple NO	Proposed Depth 5250'	Formation Granite	Contractor Not Designated	Spud Date ASAP

Hole Size	Casing Size	Casing weight/foot	Setting Depth	Sacks of Cement	Estimated TOC
14 3/4"	11 3/4"	42#	900'	450 sx	Surface
11" **	8 5/8"	24#	1600'	500 sx	Surface
** 8 5/8" casing will only be run if lost circulation is encountered.					
7 7/8"	5 1/2"	15.5#	5250'	400 sx	TOC-3100'

<sup>22</sup> Describe the proposed program. If this application is to DEEPEN or PLUG BACK, give the data on the present productive zone and proposed new productive zone. Describe the blowout prevention program, if any. Use additional sheets if necessary.  
Yates Petroleum Corporation proposes to drill and test the granite and intermediate formations. Approximately 900' of surface casing will be set and cement circulated to shut off gravel and cavings. If commercial, production casing will be run and cemented, will perforate and stimulate as needed for production.  
MUD PROGRAM: 0-900' FW Gel/Paper/LCM; 900'-3595' Brine; 3595'-TD Polyachrilamide.  
BOPE PROGRAM: BOPE will be installed on the 11 3/4" casing and tested daily for operational.

<sup>23</sup> I hereby certify that the information given above is true and complete to the best of my knowledge and belief.		OIL CONSERVATION DIVISION	
Signature: <i>Cy Cowan</i>	Printed name: Cy Cowan	Approved by: ORIGINAL SIGNED BY TIM W. GUM <i>BGM</i>	Title: DISTRICT II SUPERVISOR
Title: Regulatory Agent	Date: February 7, 2000	Approval Date: 7-10-00	Expiration Date: 7-10-01
Phone: (505) 748-1471	Conditions of Approval: Attached <input type="checkbox"/>		

DISTRICT I  
P.O. Box 1980, Hobbs, NM 88240

DISTRICT II  
P.O. Drawer DD, Artesia, NM 88210

DISTRICT III  
1000 Rio Brazos Rd., Aztec, NM 87410

State of New Mexico  
Energy, Minerals and Natural Resources Department

Form C-102  
Revised February 10, 1994  
Instruction on back  
Submit to Appropriate District Office  
State Lease - 4 Copies  
Fee Lease - 3 Copies

OIL CONSERVATION DIVISION  
P.O. Box 2088  
Santa Fe, New Mexico 87504-2088

AMENDED REPORT

WELL LOCATION AND ACREAGE DEDICATION PLAT

API Number	Pool Code	Pool Name Wildcat Precambrian
Property Code	Property Name CONEJO "RH" STATE	Well Number 5
OGRID No. 025575	Operator Name YATES PETROLEUM CORPORATION	Elevation 3758

Surface Location

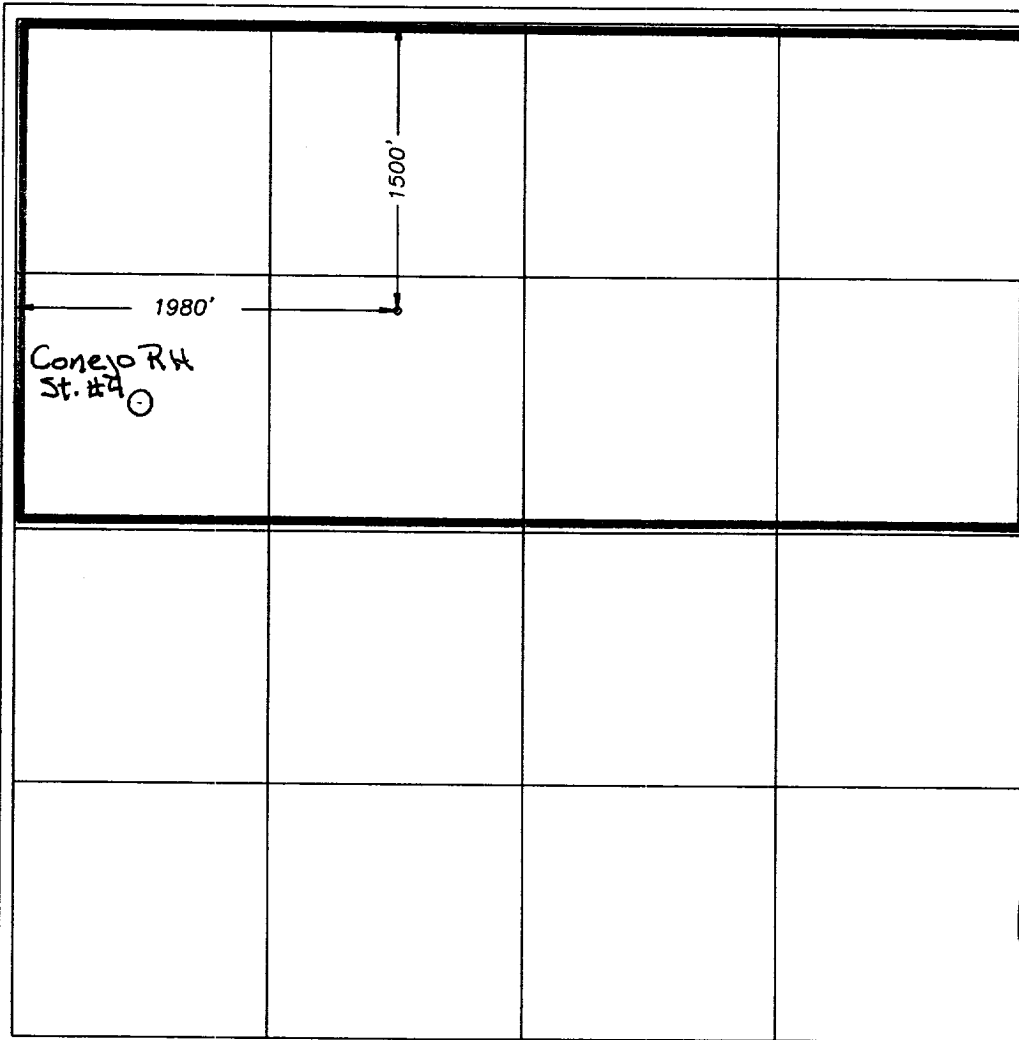
UL or lot No.	Section	Township	Range	Lot Idn	Feet from the	North/South line	Feet from the	East/West line	County
F	2	7S	25E		1500	NORTH	1980	WEST	CHAVES

Bottom Hole Location If Different From Surface

UL or lot No.	Section	Township	Range	Lot Idn	Feet from the	North/South line	Feet from the	East/West line	County

Dedicated Acres 320	Joint or Infill	Consolidation Code	Order No.
------------------------	-----------------	--------------------	-----------

NO ALLOWABLE WILL BE ASSIGNED TO THIS COMPLETION UNTIL ALL INTERESTS HAVE BEEN CONSOLIDATED OR A NON-STANDARD UNIT HAS BEEN APPROVED BY THE DIVISION



OPERATOR CERTIFICATION

I hereby certify the the information contained herein is true and complete to the best of my knowledge and belief.

*Cy Cowan*  
Signature  
Cy Cowan

Printed Name  
Regulatory Agent

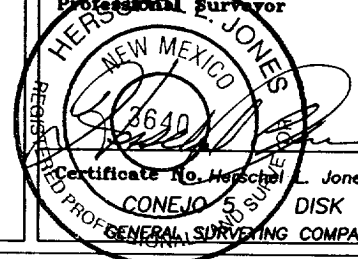
Title  
Date  
February 7, 2000

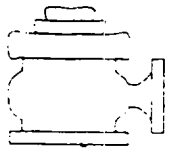
SURVEYOR CERTIFICATION

I hereby certify that the well location shown on this plat was plotted from field notes of actual surveys made by me or under my supervision, and that the same is true and correct to the best of my belief.

Date Surveyed  
12/15/1999

Signature & Seal of Professional Surveyor  
HERSCHEL L. JONES  
Certificate No. Herschel L. Jones RLS 3640  
CONEJO 5 SURVEY DISK 20  
GENERAL SURVEYING COMPANY

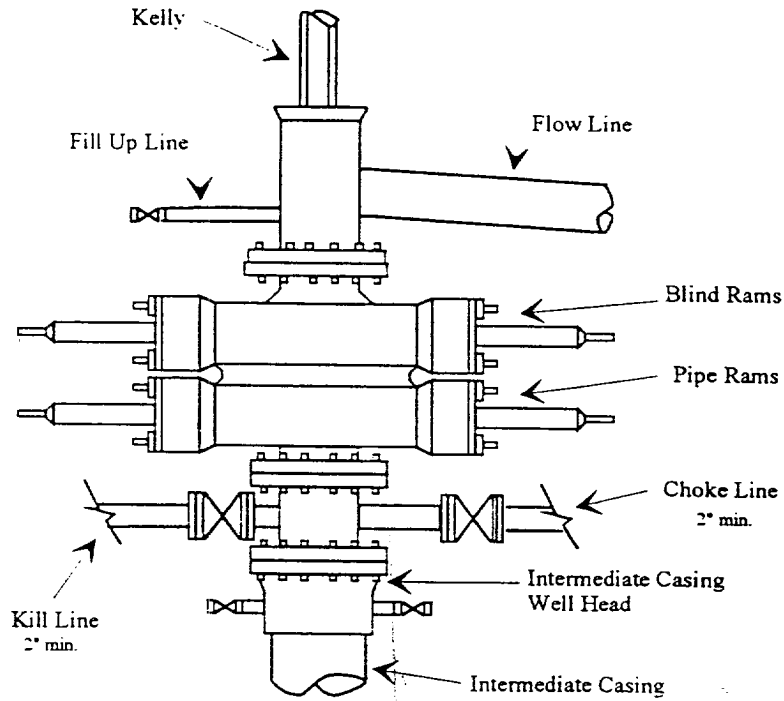




# Yates Petroleum Corporation

BOP-2

## Typical 2,000 psi Pressure System Schematic Double Ram Preventer Stack



Typical 2,000 psi choke manifold assembly with at least these minimum features

