

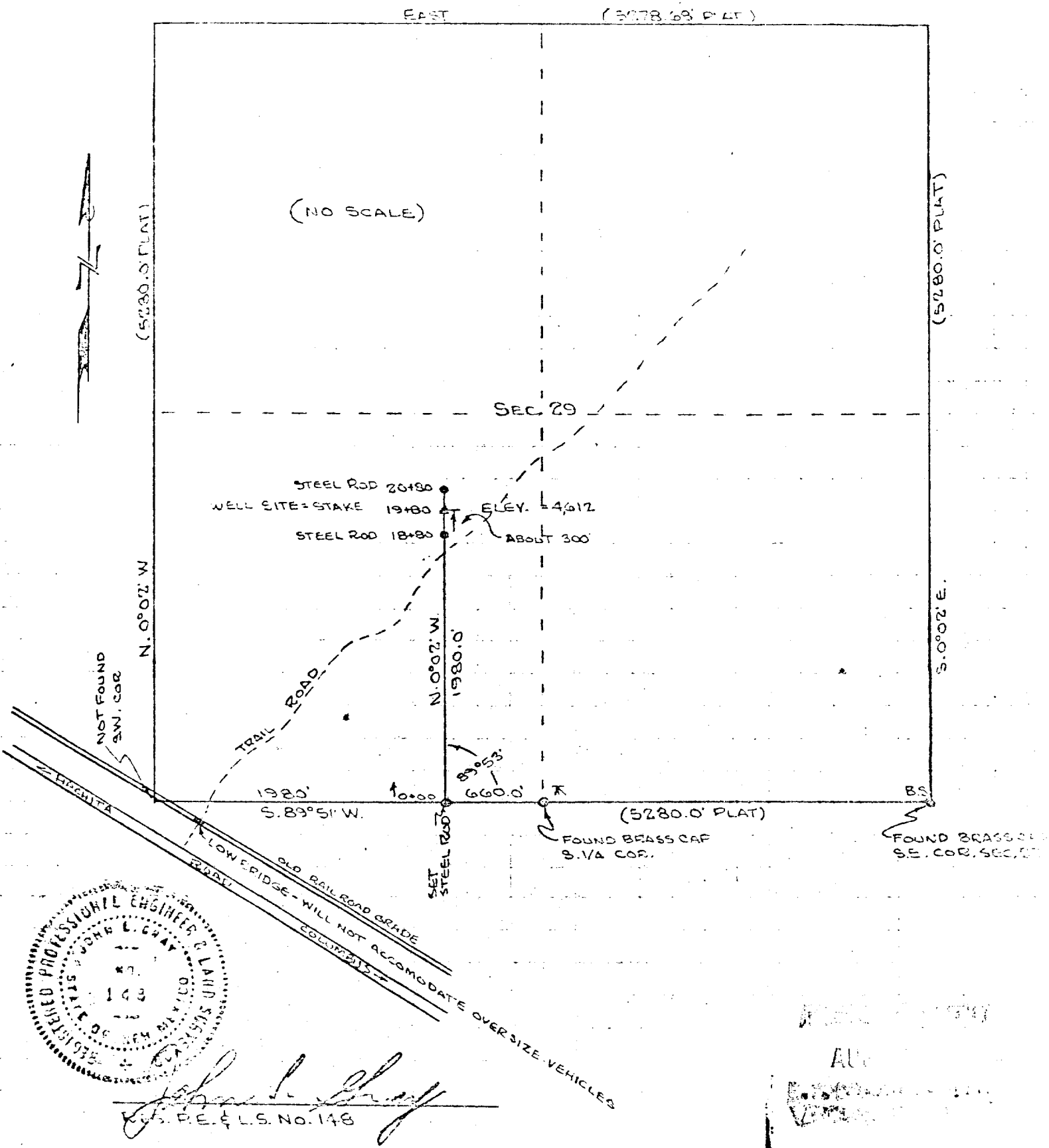
COCKZELL CORP.

WELL LOCATION

IN NE 1/4 SW 1/4 SEC. 29, T. 23S., R. 12W., N.M.P.M.

JULY 15, 1970

E. CULAK  
J. CULAK  
D. PAJUK  
K. ANDROLEWICZ



*John L. Gray*  
 P.E. & L.S. NO. 148

APR 15 1971  
 [Stamp]