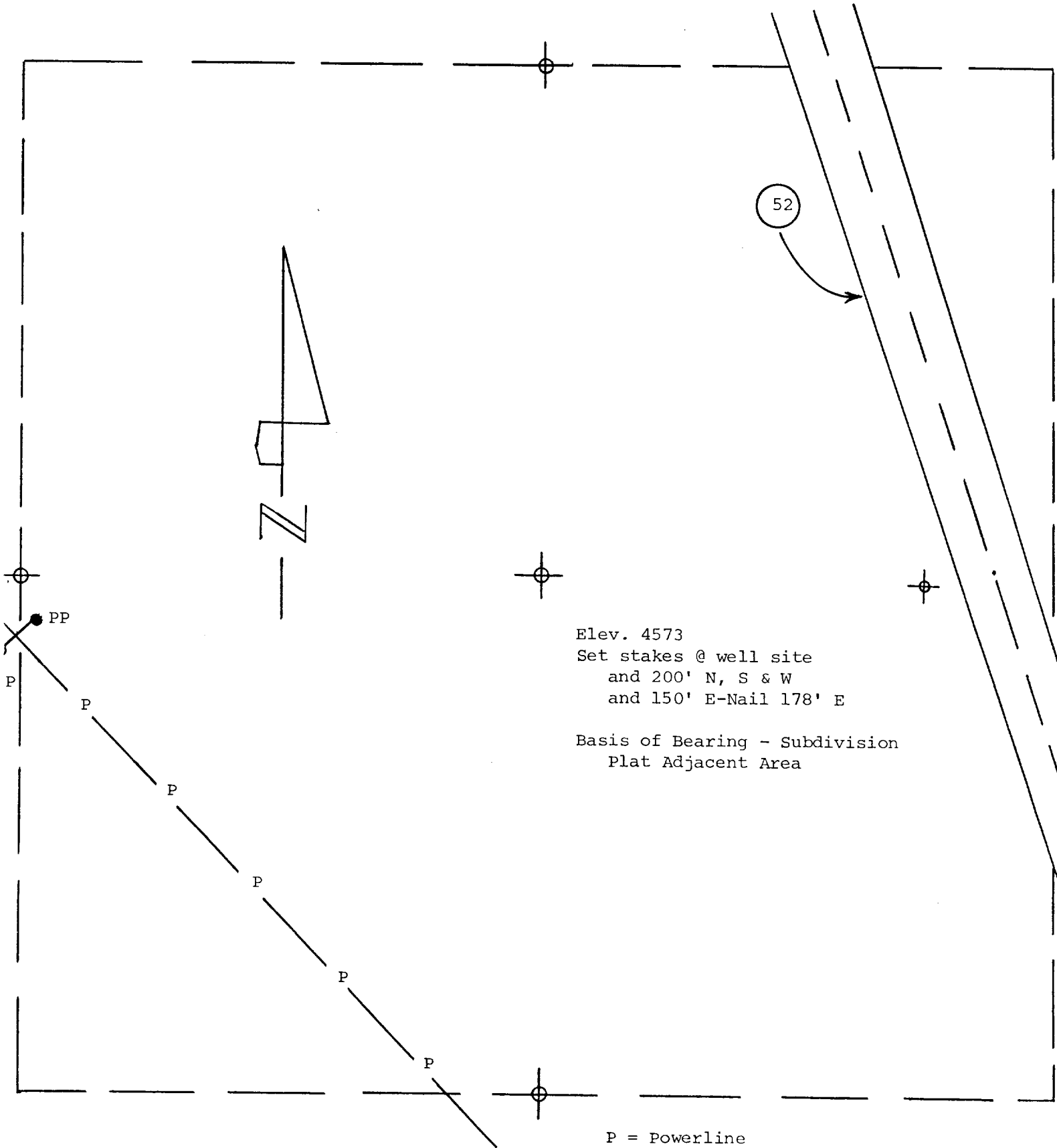


Exhibit "B"
Getty Oil Company
I-25 Ark Res "3" Fed No. 1
1650' FEL & 990' FSL, Section 3, T13S, R4W



Elev. 4573
Set stakes @ well site
and 200' N, S & W
and 150' E-Nail 178' E

Basis of Bearing - Subdivision
Plat Adjacent Area

P = Powerline