

NO. OF COPIES RECEIVED	5
DISTRIBUTION	
SANTA FE	1
FILE	1
U.S.G.S.	2
LAND OFFICE	
OPERATOR	1

NEW MEXICO OIL CONSERVATION COMMISSION

30-005-10565  
Form C-101  
Revised 1-1-65

5A. Indicate Type of Lease	
STATE <input type="checkbox"/>	FEE <input checked="" type="checkbox"/>
5. State Oil & Gas Lease No.	

APPLICATION FOR PERMIT TO DRILL, DEEPEN, OR PLUG BACK

1a. Type of Work			7. Unit Agreement Name		
b. Type of Well DRILL <input checked="" type="checkbox"/> DEEPEN <input type="checkbox"/> PLUG BACK <input type="checkbox"/> OIL WELL <input checked="" type="checkbox"/> GAS WELL <input type="checkbox"/> OTHER <input type="checkbox"/> SINGLE ZONE <input checked="" type="checkbox"/> MULTIPLE ZONE <input type="checkbox"/>			8. Farm or Lease Name <b>Pearson</b>		
2. Name of Operator <b>Roger L. Holmes</b>			9. Well No. <b>1</b>		
3. Address of Operator <b>P.O. Box 1841, Roswell, N.M.</b>			10. Field and Pool, or Wildcat <b>Wildcat</b>		
4. Location of Well UNIT LETTER <b>B</b> LOCATED <b>330</b> FEET FROM THE <b>North</b> LINE AND <b>2310</b> FEET FROM THE <b>East</b> LINE OF SEC. <b>23</b> TWP. <b>15S.</b> RGE. <b>24E.</b> NMPM			12. County <b>Chaves</b>		
19. Proposed Depth <b>1200'</b>			19A. Formation <b>San Andres</b>		20. Rotary or C.T. <b>Rotary</b>
21. Elevations (Show whether DF, RT, etc.) <b>3431 Gr.</b>	21A. Kind & Status Plug. Bond <b>One Well</b>	21B. Drilling Contractor <b>Leonard George</b>	22. Approx. Date Work will start <b>Nov. 15, 1966</b>		

PROPOSED CASING AND CEMENT PROGRAM

SIZE OF HOLE	SIZE OF CASING	WEIGHT PER FOOT	SETTING DEPTH	SACKS OF CEMENT	EST. TOP
9 7/8"	7"	20lb.	1050	Circulated	
6 3/4"	4 1/2"	9.5lb.	1200	50 sacks	900'

We plan to drill a 9 7/8" hole to 1050 feet, then reduce the hole size to 6 3/4" and core the prospective San Andres pay zone at approximately 1070 feet. If after examining the core and the logs, the San Andres appears to be commercially productive, we plan on setting and cementing the 7" for surface and water shut off, test for water shut off, set approximately 1200 feet of 4 1/2" and cement with approximately 50 sacks of cement, perforate, treat and test for commercial production.

APPROVAL VALID  
FOR 90 DAYS UNLESS  
DRILLING COMMENCED,  
EXPIRES 2-13-67

RECEIVED

NOV 15 1966

O. C. C.  
ARTESIA, OFFICE

IN ABOVE SPACE DESCRIBE PROPOSED PROGRAM: IF PROPOSAL IS TO DEEPEN OR PLUG BACK, GIVE DATA ON PRESENT PRODUCTIVE ZONE AND PROPOSED NEW PRODUCTIVE ZONE. GIVE BLOWOUT PREVENTER PROGRAM, IF ANY.

I hereby certify that the information above is true and complete to the best of my knowledge and belief.

Signed Roger L. Holmes Title Operator Date Nov. 12, 1966

(This space for State Use)

APPROVED BY W. A. Gressett TITLE OIL AND GAS INSPECTOR DATE NOV 16 1966

CONDITIONS OF APPROVAL, IF ANY:

Cement must be circulated to  
surface behind 7" casing

Notify N.M.O.C.C. in sufficient  
time to witness cementing  
the 7" casing

NEW MEXICO OIL CONSERVATION COMMISSION  
WELL LOCATION AND ACREAGE DEDICATION PLAT

Form C-102  
Supersedes C-128  
Effective 1-1-65

All distances must be from the outer boundaries of the Section.

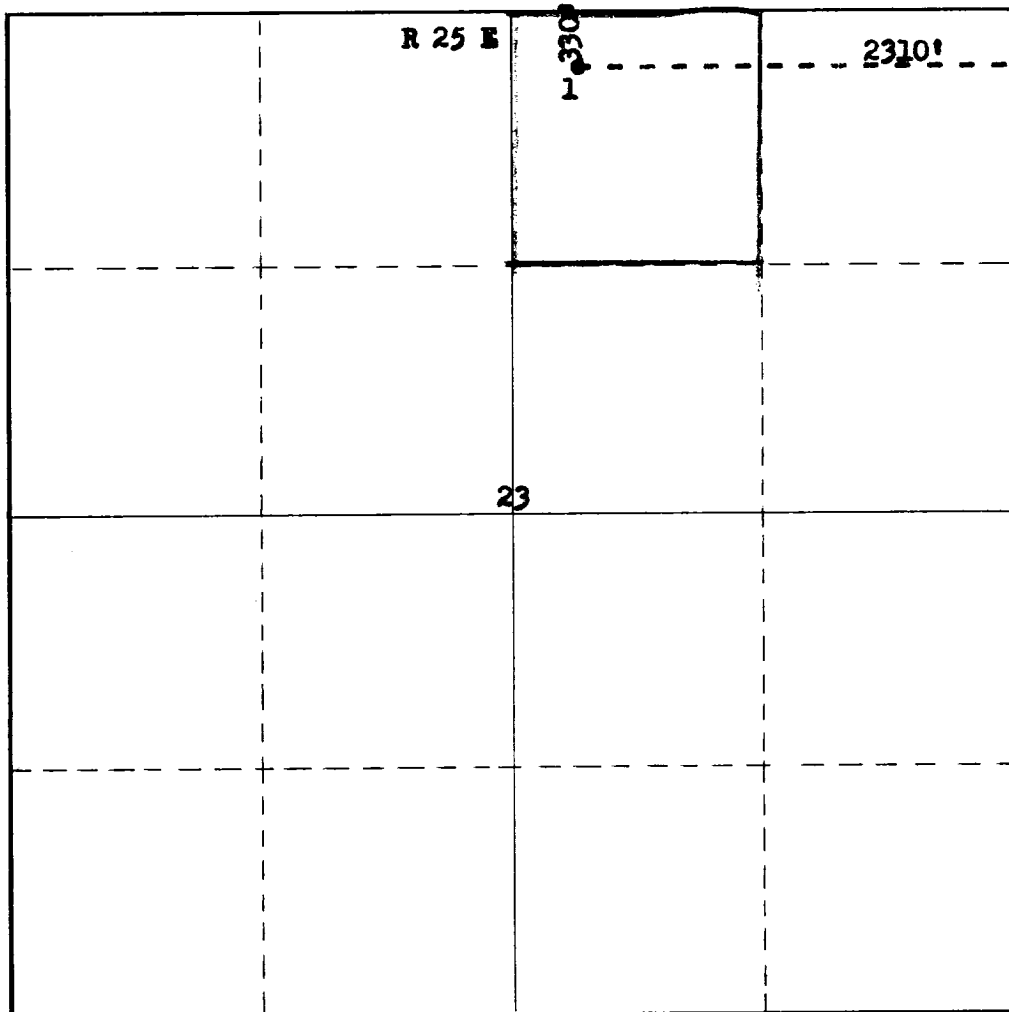
Operator <b>Spurlin-Stephens</b> <i>Roger L. Holmes</i>		Lease <b>Pearson Fee</b>		Well No. <b>1</b>
Unit Letter <b>B</b>	Section <b>23</b>	Township <b>15 South</b>	Range <b>25 East</b>	County <b>Chaves</b>
Actual Footage Location of Well: <b>2310</b> feet from the <b>East</b> line and <b>330</b> feet from the <b>North</b> line				
Ground Level Elev. <b>3428</b>	Producing Formation <i>San Andres</i>	Pool <i>Wildcat</i>	Dedicated Acreage: <b>40</b> Acres	

- Outline the acreage dedicated to the subject well by colored pencil or hachure marks on the plat below.
- If more than one lease is dedicated to the well, outline each and identify the ownership thereof (both as to working interest and royalty).
- If more than one lease of different ownership is dedicated to the well, have the interests of all owners been consolidated by communitization, unitization, force-pooling, etc?

☐ Yes ☐ No If answer is "yes," type of consolidation NOV 14 1966

If answer is "no," list the owners and tract descriptions which have actually been consolidated. (Use reverse side of this form if necessary.) ARTERIA, OFFICE

No allowable will be assigned to the well until all interests have been consolidated (by communitization, unitization, forced-pooling, or otherwise) or until a non-standard unit, eliminating such interests, has been approved by the Commission.



CERTIFICATION

I hereby certify that the information contained herein is true and complete to the best of my knowledge and belief.

Name *Don H. Ford*  
Position *Agent*  
Company *Roger L. Holmes*  
Date *11-16-66*

I hereby certify that the well location shown on this plat was plotted from field notes of actual surveys made by me or under my supervision, and that the same is true and correct to the best of my knowledge and belief.

Date Surveyed **November 7, 1966**  
Registered Professional Engineer and/or Land Surveyor

*James H. Brown*  
Certificate No.

N.M.L.S. No 542

T  
15  
S

0 330 660 '90 1320 1650 1980 2310 2640 2000 1500 1000 500