

NEW MEXICO OIL CONSERVATION COMMISSION
WELL LOCATION AND ACREAGE DEDICATION PLAT

Form C-102
 Supersedes C-128
 Effective 1-1-65

All distances must be from the outer boundaries of the Section.

| | | | | | |
|--|---|-----------------------------|--|--|----------------------|
| Operator YATES PETROLEUM CORP. | | | Lease Cottonwood KI Federal Com. | | Well No. 1 |
| Unit Letter J | Section 17 | Township 16 South | Range 25 East | County Eddy | |
| Actual Footage Location of Well: 1980 feet from the South line and 1980 feet from the East line | | | | | |
| Ground Level Elev. 3541.6 | Producing Formation MISSISSIPPIAN | Pool WIDEN | | Dedicated Acreage: 320 Acres | |

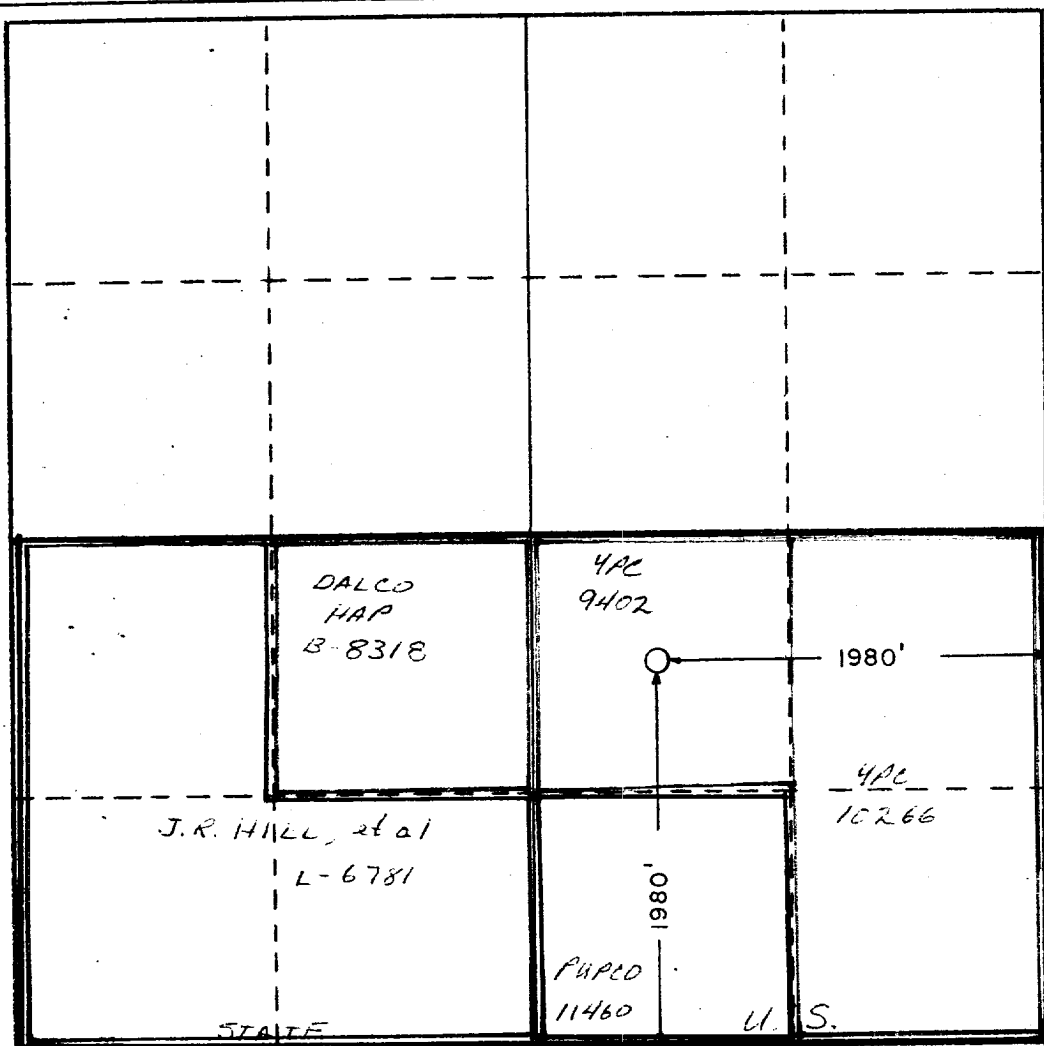
1. Outline the acreage dedicated to the subject well by colored pencil or hatchure marks on the plat below.
2. If more than one lease is dedicated to the well, outline each and identify the ownership thereof (both as to working interest and royalty).
3. If more than one lease of different ownership is dedicated to the well, have the SURVEYS of all owners been consolidated by communitization, unitization, force-pooling, etc?

RECEIVED
FEB 9 1979
U.S. GEOLOGICAL SURVEY
ARTESIA, NEW MEXICO

☒ Yes ☐ No If answer is "yes," type of consolidation **BEING COMMUNITIZED**

If answer is "no," list the owners and tract descriptions which have actually been consolidated. (Use reverse side of this form if necessary.) _____

No allowable will be assigned to the well until all interests have been consolidated (by communitization, unitization, forced-pooling, or otherwise) or until a non-standard unit, eliminating such interests, has been approved by the Commission.



CERTIFICATION

I hereby certify that the information contained herein is true and complete to the best of my knowledge and belief.

Name
EDDIE M. MAHFOOD

Position
ENGINEER

Company
YATES PETROLEUM CORP

Date
2-7-79

I hereby certify that the well location shown on this plat was plotted from field notes of actual surveys made by me or under my supervision, and that the same is true and correct to the best of my knowledge and belief.

Date Surveyed
January 15, 1979

Registered Professional Engineer and/or Land Surveyor
Herschel Jones

Certificate No.
3640

0 330 660 990 1320 1650 1980 2310 2640 2970 3300 3630 3960 4290 4620 4950 5280 5610 5940 6270 6600