

District I  
1625 N. French Dr., Hobbs, NM 88240  
District II  
811 South First, Artesia, NM 88210  
District III  
1000 Rio Brazos Road, Aztec, NM 87410  
District IV  
2040 South Pacheco, Santa Fe, NM 87505

State of New Mexico  
Energy Minerals and Natural Resources

Oil Conservation Division  
2040 South Pacheco  
Santa Fe, NM 87505

Form C-101  
Revised March 17, 1999

Submit to appropriate District Office  
State Lease - 6 Copies  
Fee Lease - 5 Copies

☐ AMENDED REPORT

APPLICATION FOR PERMIT TO DRILL, RE-ENTER, DEEPEN, PLUGBACK, OR ADD A ZONE

<sup>1</sup> Operator Name and Address OXY USA Inc. P.O. Box 50250 Midland, TX 79710-0250		<sup>2</sup> OGRID Number 16696
		<sup>3</sup> API Number 30-015- 30693
<sup>3</sup> Property Code 24743	<sup>5</sup> Property Name OXY Sosa State	<sup>6</sup> Well No. 1

<sup>7</sup> Surface Location									
UL or lot no. K	Section 12	Township 17S	Range 27E	Lot Idn	Feet from the 1780	North/South line South	Feet from the 1980	East/West line West	County Eddy

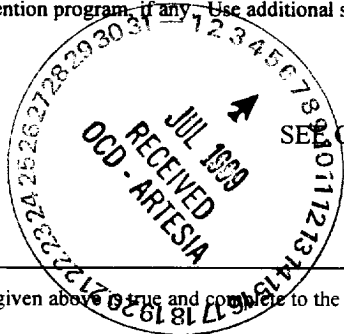
<sup>8</sup> Proposed Bottom Hole Location If Different From Surface									
UL or lot no.	Section	Township	Range	Lot Idn	Feet from the	North/South line	Feet from the	East/West line	County
<sup>9</sup> Proposed Pool 1 Undesignated Crow Flats Morrow					<sup>10</sup> Proposed Pool 2 75720				

<sup>11</sup> Work Type Code N	<sup>12</sup> Well Type Code G	<sup>13</sup> Cable/Rotary R	<sup>14</sup> Lease Type Code S - LG584	<sup>15</sup> Ground Level Elevation 3461'
<sup>16</sup> Multiple No	<sup>17</sup> Proposed Depth 9600'	<sup>18</sup> Formation Morrow	<sup>19</sup> Contractor FWA-Peterson	<sup>20</sup> Spud Date 8/15/99

Minimum WOC time | 8 hrs. <sup>21</sup> Proposed Casing and Cement Program

Hole Size	Casing Size	Casing weight/foot	Setting Depth	Sacks of Cement	Estimated TOC
17-1/2"	13-3/8"	48#	400'	360sx	Surface
11"	8-5/8"	32#	1500'	425sx	Surface
7-7/8"	4-1/2"	11.6#	9600'	705sx	6000'

22 Describe the proposed program. If this application is to DEEPEN or PLUG BACK, give the data on the present productive zone and proposed new productive zone. Describe the blowout prevention program, if any. Use additional sheets if necessary.



Post ID-1  
7-9-99  
API + Loc

<sup>23</sup> I hereby certify that the information given above is true and complete to the best of my knowledge and belief. Signature: <i>David Stewart</i>		OIL CONSERVATION DIVISION	
Printed name: David Stewart		Approved by: ORIGINAL SIGNED BY TIM W. GUM DISTRICT II SUPERVISOR	
Title: Regulatory Analyst		Title:	
Date: 7/2/99		Approval Date: 7-8-99	
Phone: 915-685-5717		Expiration Date: 7-8-00	
		Conditions of Approval: Attached <input type="checkbox"/>	

ATTACHMENT 3160-3  
OXY USA Inc.  
OXY Sosa State #1  
SEC 12 T17S R27E  
Eddy County, NM

PROPOSED TD: 9600' TVD

BOP PROGRAM: 0' - 400' None

400' - 1500' 13-3/8" 5M blind and pipe rams with 5M annular preventer.

1500' - 9600' 13-3/8" 5M blind pipe rams with 5M annular preventer and rotating head below 7400'.

CASING: Surface: 13-3/8" OD 48# H40 ST&C new casing set at 400'

Intermediate: 8-5/8" OD 32# K55 ST&C new casing from 0-1500'

Production: 4-1/2" OD 11.6# N80 LT&C new casing from 0-9600'

CEMENT: Surface - Circulate cement with 160sx 35:65 POZ/C with 6% Bentonite + .005#/sx Static Free + 2% CaCl<sub>2</sub> + .25#/sx Cello-Seal + .005gps FP-6L followed by 200sx Cl C with .005#/sx Static Free + .005gps FP-6L + 2% CaCl<sub>2</sub>.

Intermediate - Circulate cement with 225sx 35:65 POZ/C with 6% Bentonite + .005#/sx Static Free + 2% CaCl<sub>2</sub> + .25#/sx Cello-Seal + .005gps FP-6L + 5#/sx Gilsonite followed by 200sx Cl C with 2% CaCl<sub>2</sub> + .005#/sx Static Free + .005gps FP-6L.

Production - Cement with 630sx 15:61:11 POZ/C/CSE with .005#/sx Static Free + .005gps FP-6L + .5% FL-52 + .5% FL-25 + 8#/sx Gilsonite followed by 75sx Cl C with .005#/sx Static Free + .005gps FP-6L + .7% FL-25. Estimated top of cement is 6000'.

Note: Cement volumes may need to be adjusted to hole caliper.

MUD: 0 - 400' Fresh water/native mud. Lime for pH control (9-10). Paper for seepage. Wt 8.7-9.2 ppg, Vis 32-34 sec

400' - 1500' Fresh water. Lime for pH control (10.0-10.5). Paper for seepage. Wt 8.3-9.0ppg, Vis 28-29 sec

1500' - 6000' Fresh water. Lime for pH control (9-9.5). Paper for seepage. Wt 8.3-8.5 ppg, Vis 28-29 sec

6000' - 7400' Cut brine. Lime for pH control (10-10.5). Wt 9.6-10.0 ppg, Vis 28-29sec

7400' - 9600' Mud up with an Duo Vis/Flo Trol mud system. Wt 9.6-10.0ppg, Vis 32-36sec, WL<10cc

DISTRICT I  
P.O. Box 1980, Hobbs, NM 88240

State of New Mexico  
Energy, Minerals and Natural Resources Department

Form C-102  
Revised February 10, 1984  
Instruction on back  
Submit to Appropriate District Office  
State Lease - 4 Copies  
Fee Lease - 3 Copies

DISTRICT II  
P.O. Drawer DD, Artesia, NM 88210

OIL CONSERVATION DIVISION

P.O. Box 2088  
Santa Fe, New Mexico 87504-2088

DISTRICT III  
1000 Rio Bravo Rd., Aztec, NM 87410

☐ AMENDED REPORT

WELL LOCATION AND ACREAGE DEDICATION PLAT

API Number 30-015-	Pool Code 75720	Pool Name Undesignated Crow Flats Morrow
Property Code	Property Name Oxy Sosa State	Well Number 1
OGRID No. 16696	Operator Name Oxy USA Inc.	Elevation 3461'

Surface Location

UL or lot No. K	Section 12	Township 17 S	Range 27 E	Lot Idn	Feet from the 1780	North/South line South	Feet from the 1980	East/West line West	County Eddy
--------------------	---------------	------------------	---------------	---------	-----------------------	---------------------------	-----------------------	------------------------	----------------

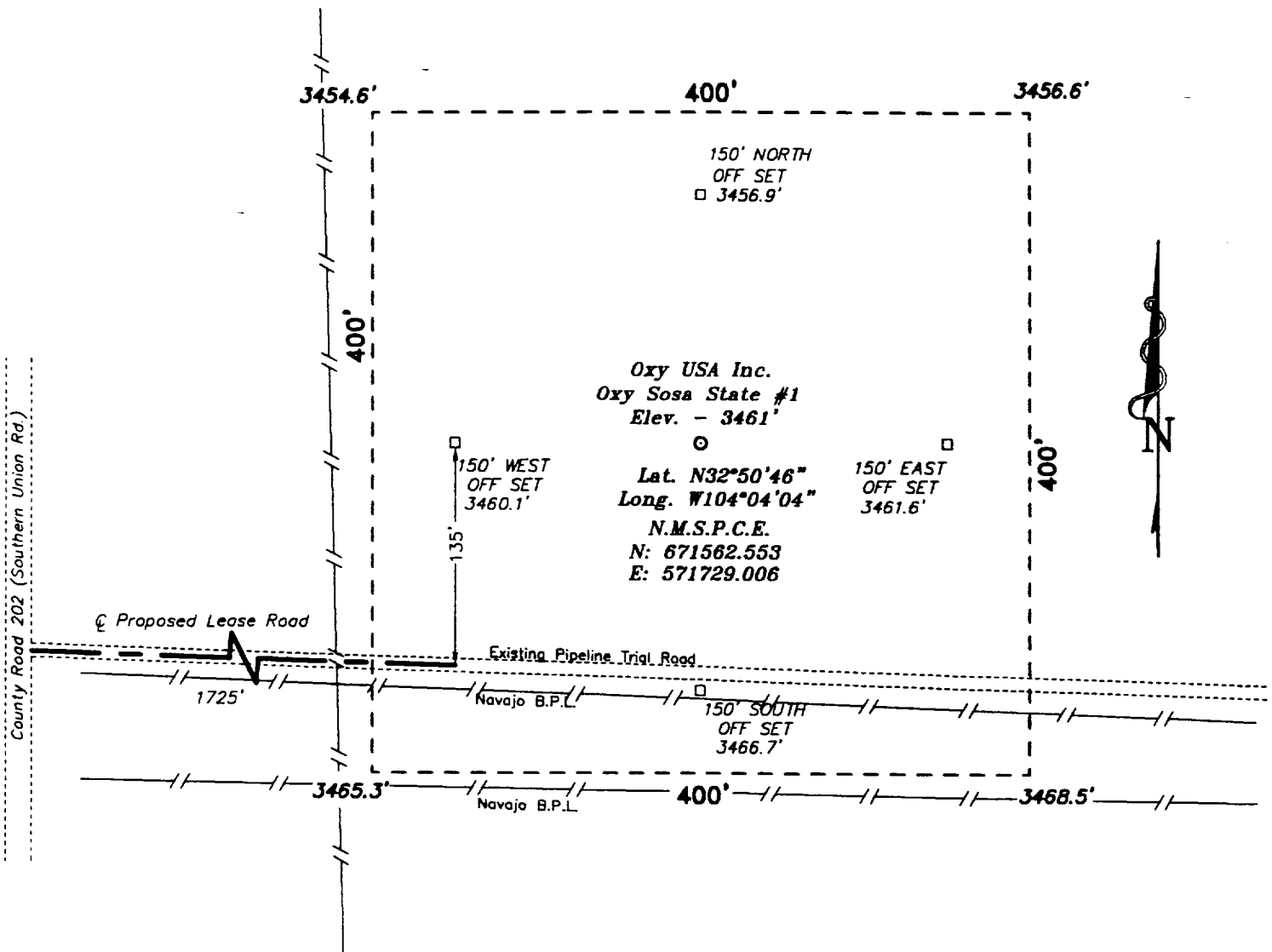
Bottom Hole Location If Different From Surface

UL or lot No.	Section	Township	Range	Lot Idn	Feet from the	North/South line	Feet from the	East/West line	County
Dedicated Acres 320	Joint or Infill N	Consolidation Code	Order No.						

NO ALLOWABLE WILL BE ASSIGNED TO THIS COMPLETION UNTIL ALL INTERESTS HAVE BEEN CONSOLIDATED  
OR A NON-STANDARD UNIT HAS BEEN APPROVED BY THE DIVISION

				<b>OPERATOR CERTIFICATION</b>  I hereby certify the the information contained herein is true and complete to the best of my knowledge and belief.   Signature David Stewart Printed Name Regulatory Analyst Title 7/2/99 Date	
				<b>SURVEYOR CERTIFICATION</b>  I hereby certify that the well location shown on this plat was plotted from field notes of actual surveys made by me or under my supervision and that the same is true and correct to the best of my belief.  June 25, 1999 Date GARY L. JONES Signature & Seal of Professional Surveyor 7977 W.D. No. 92366 Certification No. Gary L. Jones 7977 BASIN SURVEYS	

SECTION 12, TOWNSHIP 17 SOUTH, RANGE 27 EAST, N.M.P.M.,  
EDDY COUNTY, NEW MEXICO.



Directions

From the City of Artesia take US 82 (Lovington Hwy.) East  
8 1/2 miles, thence north on County road 202 (Southern Union Rd)  
2.3 miles to a proposed road, thence east on proposed road  
0.3 miles to proposed location.



SCALE: 1" = 100'

**Oxy USA Inc.**

REF: Oxy Sosa State No. 1 / Well Pad Topo

THE OXY SOSA STATE No. 1 LOCATED 1720' FROM  
THE SOUTH LINE AND 1980' FROM THE WEST LINE OF  
SECTION 12, TOWNSHIP 17 SOUTH, RANGE 27 EAST,  
N.M.P.M., EDDY COUNTY, NEW MEXICO.

**BASIN SURVEYS** P.O. BOX 1786 - HOBBS, NEW MEXICO

W.O. Number: 9235

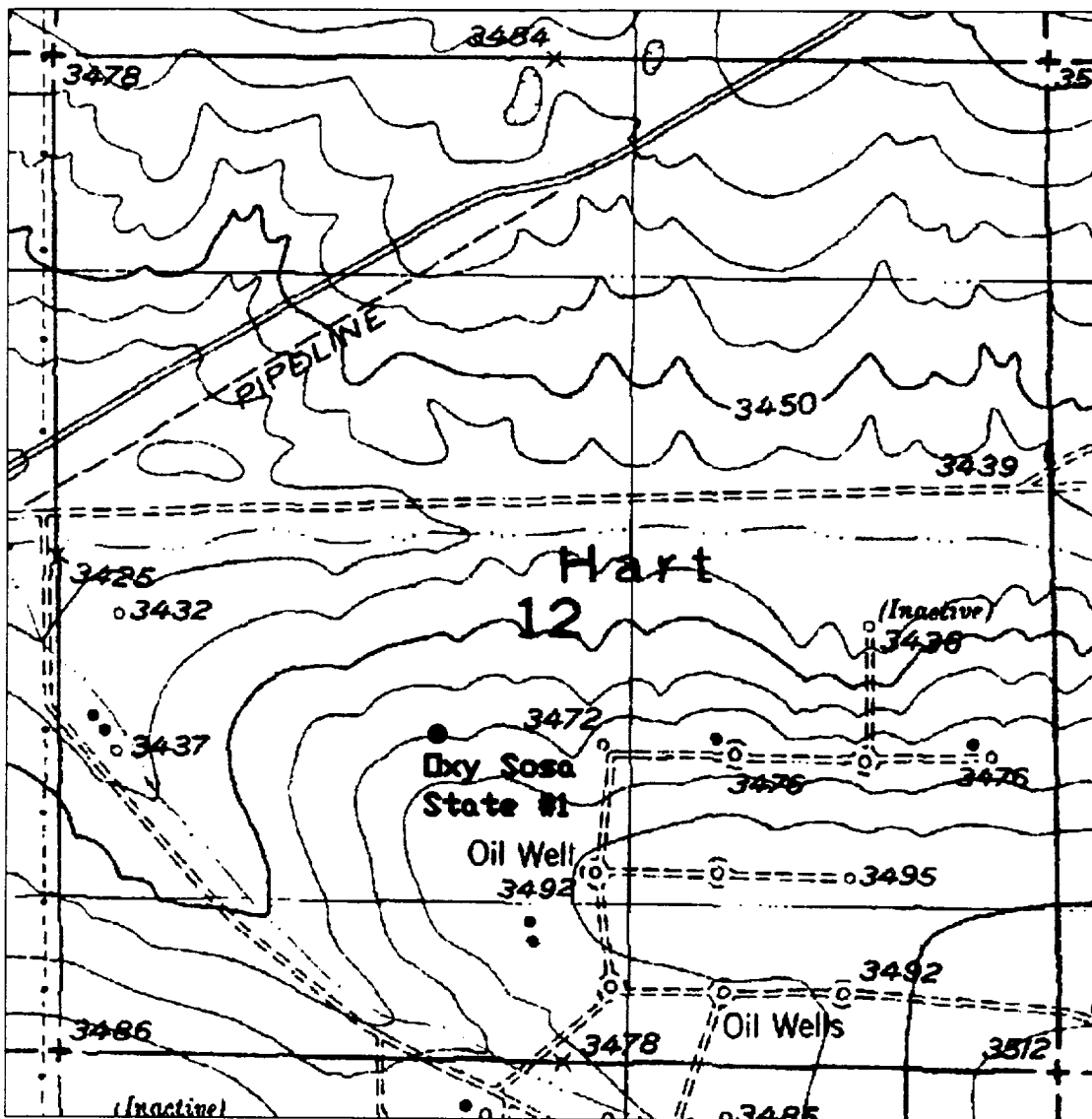
Drawn By: S.C. NICHOLS

Date: 06-29-99

Disk: SCN #104 - 9235AA.DWG

Survey Date: 06-25-99

Sheet 1 of 1 Sheets



### Oxy Sosa State No. 1

Located at 1720' FSL and 1980' FWL  
 Section 12, Township 17 South, Range 27 East,  
 N.M.P.M., Eddy County, New Mexico.

**basin**  
**surveys**  
 focused on excellence  
 in the oilfield

P.O. Box 1786  
 1120 N. West County Rd.  
 Hobbs, New Mexico 88241  
 (505) 393-7316 - Office  
 (505) 392-3074 - Fax  
 basinsurveys.com

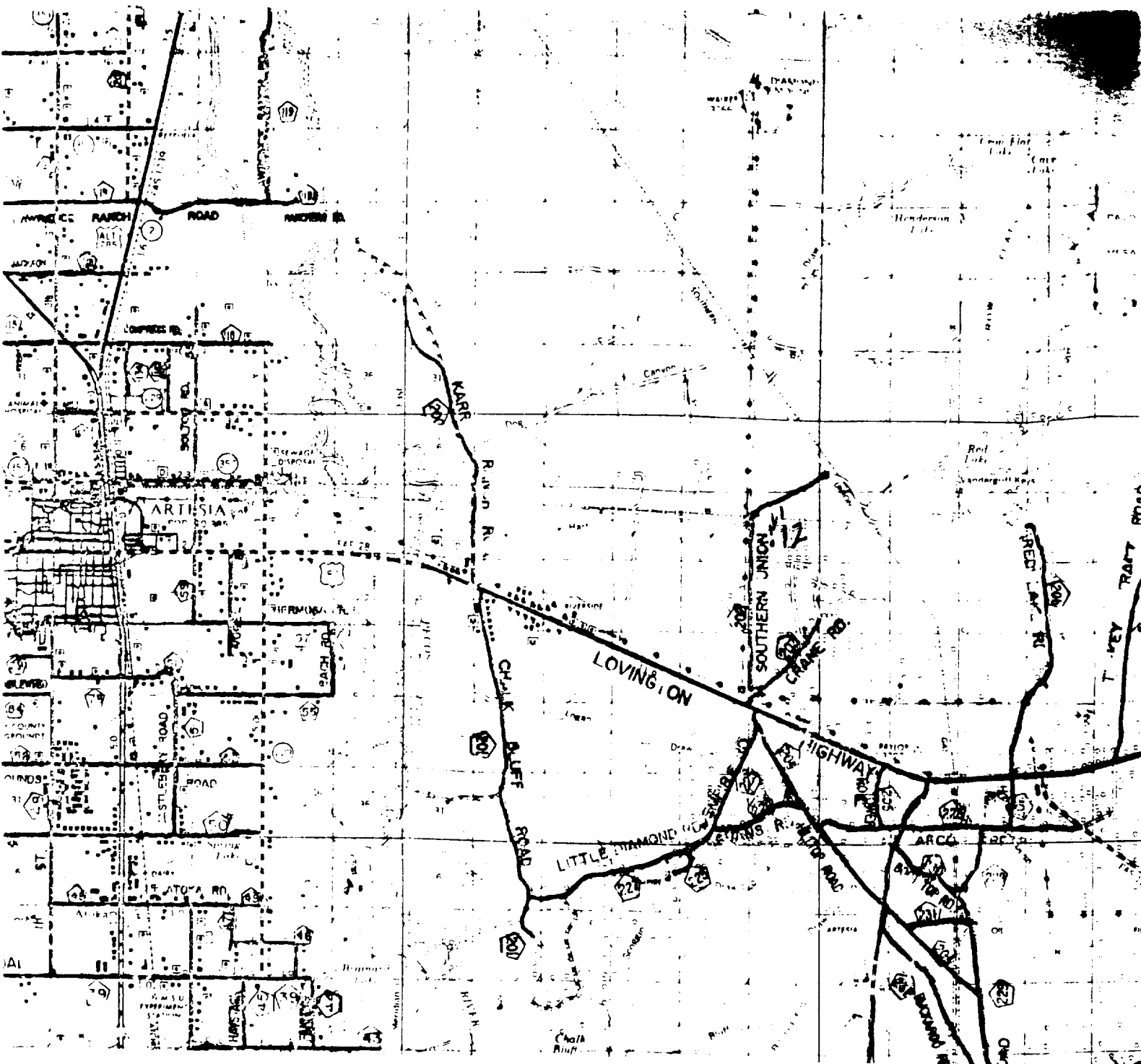
W.O. Number: OXY9235B - SCN #104

Survey Date: 06-25-99

Scale: 1" = 1000'

Date: 06-29-99

**Oxy USA Inc.**



Oxy USA Inc.  
 Oxy Sosa State No. 1  
 1720' FSL & 1980' FWL  
 Sec. 12, T-17-S, R-27-E,  
 Eddy County, New Mexico.



SCALE: 1"=2 Miles

**Basin Surveys**

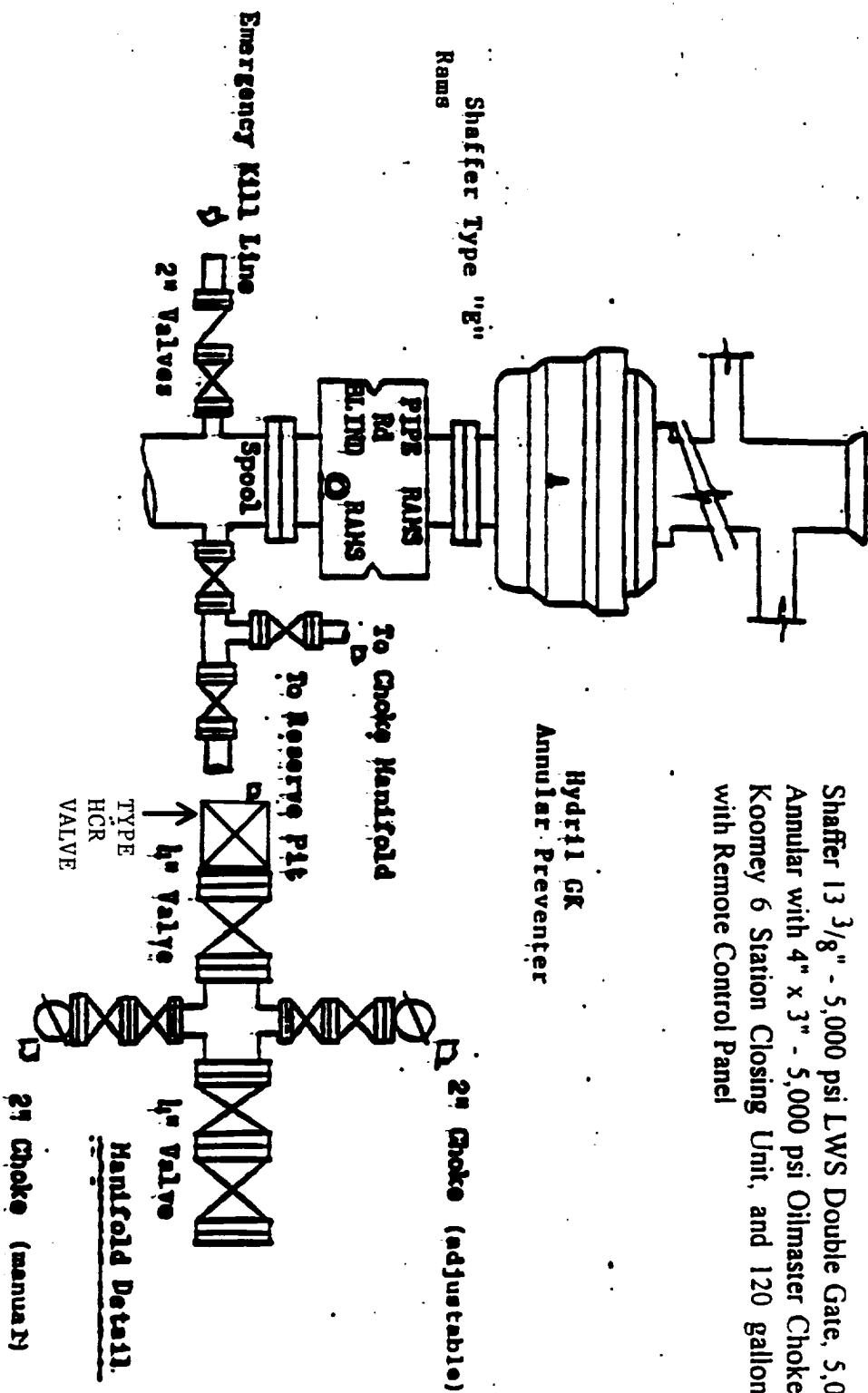
P.O. BOX 1786-HOBBS, NEW MEXICO

2000' 0 2000' 4000 Feet

W.O. Number: 9235	Drawn By: S.C. Nichols	Survey Date: 06-25-99	Sheet 1 of 1 Sheets
-------------------	------------------------	-----------------------	---------------------

# BLOWOUT PREVENTOR SCHEMATIC

EXHIBIT A



Shaffer 13 3/8" - 5,000 psi LWS Double Gate, 5,000 psi Shaffer Annular with 4" x 3" - 5,000 psi Oilmaster Choke Manifold and Koomey 6 Station Closing Unit, and 120 gallon Accumulator with Remote Control Panel

Hydril GK  
Annular Preventer