

UNITED STATES  
DEPARTMENT OF THE INTERIOR  
GEOLOGICAL SURVEY

30-005-60098

## APPLICATION FOR PERMIT TO DRILL, DEEPEN, OR PLUG BACK

## 1a. TYPE OF WORK

DRILL ☒DEEPEN ☐PLUG BACK ☐

## b. TYPE OF WELL

OIL  
WELL ☒GAS  
WELL ☐OTHER ☐SINGLE  
ZONE ☒MULTIPLE  
ZONE ☐

## 2. NAME OF OPERATOR

JACK L. MCCLELLAN

## 3. ADDRESS OF OPERATOR

P.O. Box 848, ROSWELL, NEW MEXICO 88201

4. LOCATION OF WELL (Report location clearly and in accordance with any State requirements.)\*  
At surface

At proposed prod. zone

2310 FNL &amp; 2310 FWL

## 14. DISTANCE IN MILES AND DIRECTION FROM NEAREST TOWN OR POST OFFICE\*

14 MILES NORTH OF LOCO HILLS, N.M.

## 15. DISTANCE FROM PROPOSED\*

LOCATION TO NEAREST  
PROPERTY OR LEASE LINE, FT.  
(Also to nearest drilg. unit line, if any)

2310'

18. DISTANCE FROM PROPOSED LOCATION\*  
TO NEAREST WELL, DRILLING, COMPLETED,  
OR APPLIED FOR, ON THIS LEASE, FT.

1 1/2 MILES

## 16. NO. OF ACRES IN LEASE

960

## 19. PROPOSED DEPTH

2000'

17. NO. OF ACRES ASSIGNED  
TO THIS WELL

40

## 20. ROTARY OR CABLE TOOLS

CABLE TOOLS

## 21. ELEVATIONS (Show whether DF, RT, GR, etc.)

3836' G.L.

## 22. APPROX. DATE WORK WILL START\*

NOVEMBER 7, 1969

## 23.

## PROPOSED CASING AND CEMENTING PROGRAM

SIZE OF HOLE	SIZE OF CASING	WEIGHT PER FOOT	SETTING DEPTH	QUANTITY OF CEMENT
12 3/4"	8 5/8"	24 LB.	400'	50 SX
8"	5 1/2"	14 LB.	2000'	150 SX

WILL DRILL TO APPROXIMATELY 2000' WITH CABLE TOOLS TO TEST THE  
QUEEN SAND. IF PRODUCTION IS INDICATED, WILL SET PIPE AND COMPLETE.  
CORTEZ DRILLING COMPANY BOX 848, ROSWELL, NEW MEXICO 88201 WILL  
BE THE DRILLING CONTRACTOR.

RECEIVED

NOV 7 1969

J. C. C.  
ARTERIA, OFFICE

IN ABOVE SPACE DESCRIBE PROPOSED PROGRAM: If proposal is to deepen or plug back, give data on present productive zone and proposed new productive zone. If proposal is to drill or deepen directionally, give pertinent data on subsurface locations and measured and true vertical depths. Give blowout preventer program, if any.

## 24.

SIGNED

J. L. McClellan

TITLE

OPERATOR

DATE

Nov. 4, 1969

(This space for Federal or State office use)

PERMIT NO.

APPROVAL DATE

APPROVED BY  
CONDITIONS OF APPROVAL, IF ANY:

THIS APPROVAL IS RESCINDED IF OPERATIONS  
ARE NOT COMMENCED WITHIN 3 MONTHS.  
EXPIRES FEB - 6 - 1970

DATE

\*See Instructions On Reverse Side

NEW MEXICO OIL CONSERVATION COMMISSION  
WELL LOCATION AND ACREAGE DEDICATION PLAT

Form C-102  
Supersedes C-128  
Effective 1-4-65

All distances must be from the outer boundaries of the Section.

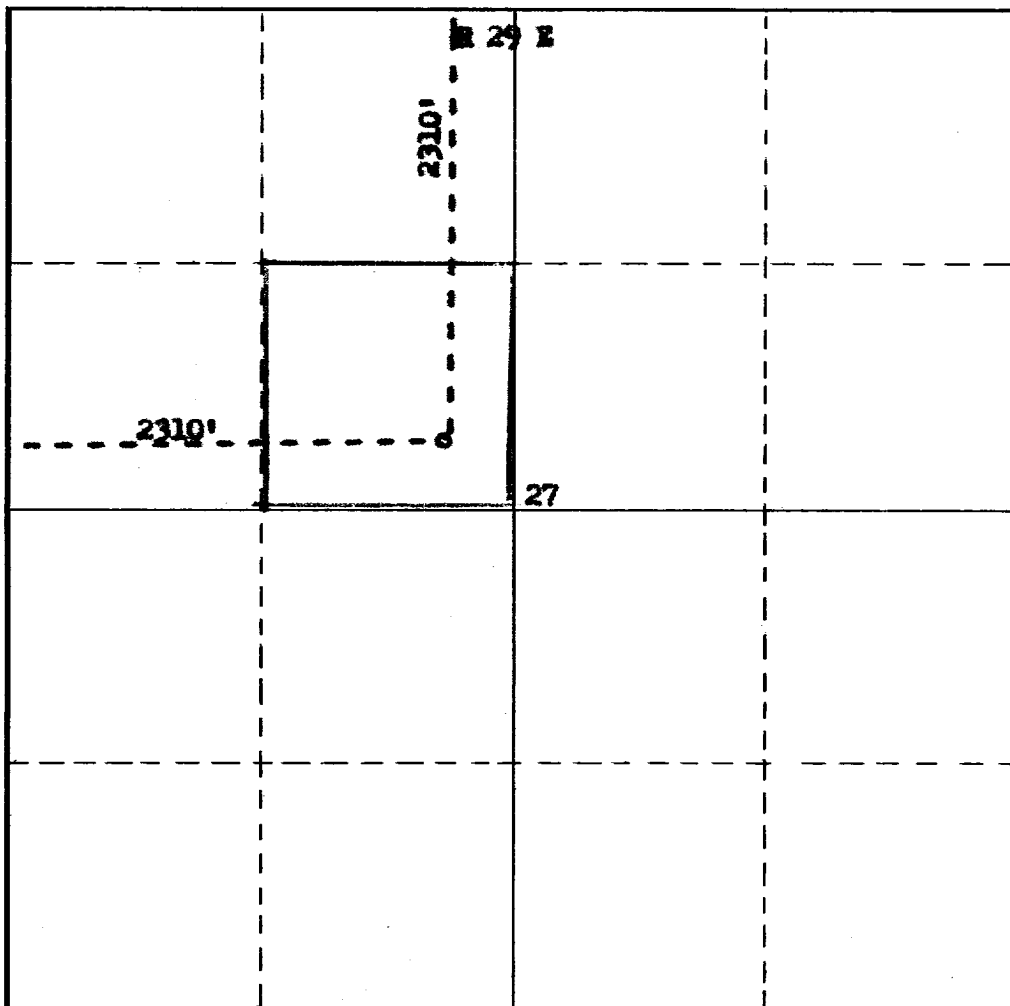
Operator <b>Jack L. McClellan</b>			Lease <b>"BB" FEDERAL "BB"</b>		Well No. <b>1</b>
Unit Letter <b>F</b>	Section <b>27</b>	Township <b>15 South</b>	Range <b>29 East</b>	County <b>Chaves</b>	
Actual Footage Location of Well: <b>2310</b> feet from the <b>North</b> line and <b>2310</b> feet from the <b>West</b> line					
Ground Level Elev. <b>3836</b>	Producing Formation <b>QUEEN SAND</b>	Pool <b>WILDCAT</b>	Dedicated Acreage: <b>40</b> Acres		

1. Outline the acreage dedicated to the subject well by colored pencil or hachure marks on the plat below.
2. If more than one lease is dedicated to the well, outline each and identify the ownership thereof (both as to working interest and royalty).
3. If more than one lease of different ownership is dedicated to the well, have the interests of all owners been consolidated by communitization, unitization, force-pooling, etc?

☐ Yes ☐ No If answer is "yes," type of consolidation \_\_\_\_\_

If answer is "no," list the owners and tract descriptions which have actually been consolidated. (Use reverse side of this form if necessary.) \_\_\_\_\_

No allowable will be assigned to the well until all interests have been consolidated (by communitization, unitization, forced-pooling, or otherwise) or until a non-standard unit, eliminating such interests, has been approved by the Commission.



CERTIFICATION

I hereby certify that the information contained herein is true and complete to the best of my knowledge and belief.

Name  
**JACK L. MCCLELLAN**  
Position  
**OPERATOR**

Company  
**JACK L. MCCLELLAN**

Date  
**NOVEMBER 4, 1969**

I hereby certify that the well location shown on this plat was plotted from field notes of actual surveys made by me or under my supervision, and that the same is true and correct to the best of my knowledge and belief.

Date Surveyed

**October 10, 1969**

Registered Professional Engineer and/or Land Surveyor

**JAMES H. BROWN**  
Certificate No.

**N.M.L.S. No. 342**

