

UNITED STATES
DEPARTMENT OF THE INTERIOR
GEOLOGICAL SURVEY

APPLICATION FOR PERMIT TO DRILL, DEEPEN, OR PLUG BACK

1a. TYPE OF WORK

DRILL ☒DEEPEN ☐PLUG BACK ☐

b. TYPE OF WELL

OIL
WELL ☐GAS
WELL ☒

OTHER

SINGLE
ZONE ☐MULTIPLE
ZONE ☐

2. NAME OF OPERATOR

Read & Stevens, Inc.

3. ADDRESS OF OPERATOR

P.O. Box 2126, Roswell, New Mexico 88201

4. LOCATION OF WELL (Report location clearly and in accordance with any State requirements.)*

At surface

990' FNL & 1650' FWL

At proposed prod. zone

990' FNL & 1650' FWL

14. DISTANCE IN MILES AND DIRECTION FROM NEAREST TOWN OR POST OFFICE*

12 miles East, Southeast of Hagerman, New Mexico

15. DISTANCE FROM PROPOSED*

LOCATION TO NEAREST

PROPERTY OR LEASE LINE, FT.

(Also to nearest drlg. unit line, if any)

990'

18. DISTANCE FROM PROPOSED LOCATION*

TO NEAREST WELL, DRILLING, COMPLETED,

OR APPLIED FOR, ON THIS LEASE, FT.

3168'

16. NO. OF ACRES IN LEASE

320

19. PROPOSED DEPTH

8600'

17. NO. OF ACRES ASSIGNED
TO THIS WELL

320'

20. ROTARY OR CABLE TOOLS

Rotary

21. ELEVATIONS (Show whether DF, RT, GR, etc.)

22. APPROX. DATE WORK WILL START*

February 9, 1970

23.

PROPOSED CASING AND CEMENTING PROGRAM

SIZE OF HOLE	SIZE OF CASING	WEIGHT PER FOOT	SETTING DEPTH	QUANTITY OF CEMENT
17 1/2"	12 3/4"	34#	350'	400 sx. (cir. to surface)
11 "	8 5/8"	24#	1600'	200 sx.

RECEIVED

O. C. C.
ARTESIA OFFICERECEIVED
FEB - 8 1970
U.S. GEOLOGICAL SURVEY
NEW MEXICO

IN ABOVE SPACE DESCRIBE PROPOSED PROGRAM: If proposal is to deepen or plug back, give data on present productive zone and proposed new productive zone. If proposal is to drill or deepen directionally, give pertinent data on subsurface locations and measured and true vertical depths. Give blowout preventer program, if any.

24.

SIGNED

TITLE

Agent

DATE

February 3, 1970

(This space for Federal or State office use)

PERMIT NO.

APPROVAL DATE

FEB 5 1970

APPROVED BY

TITLE

DATE

CONDITIONS OF APPROVAL, IF ANY:

*See Instructions On Reverse Side

NEW MEXICO OIL CONSERVATION COMMISSION
WELL LOCATION AND ACREAGE DEDICATION PLAT

Form C-102
Supersedes C-128
Effective 1-1-65

All distances must be from the outer boundaries of the Section.

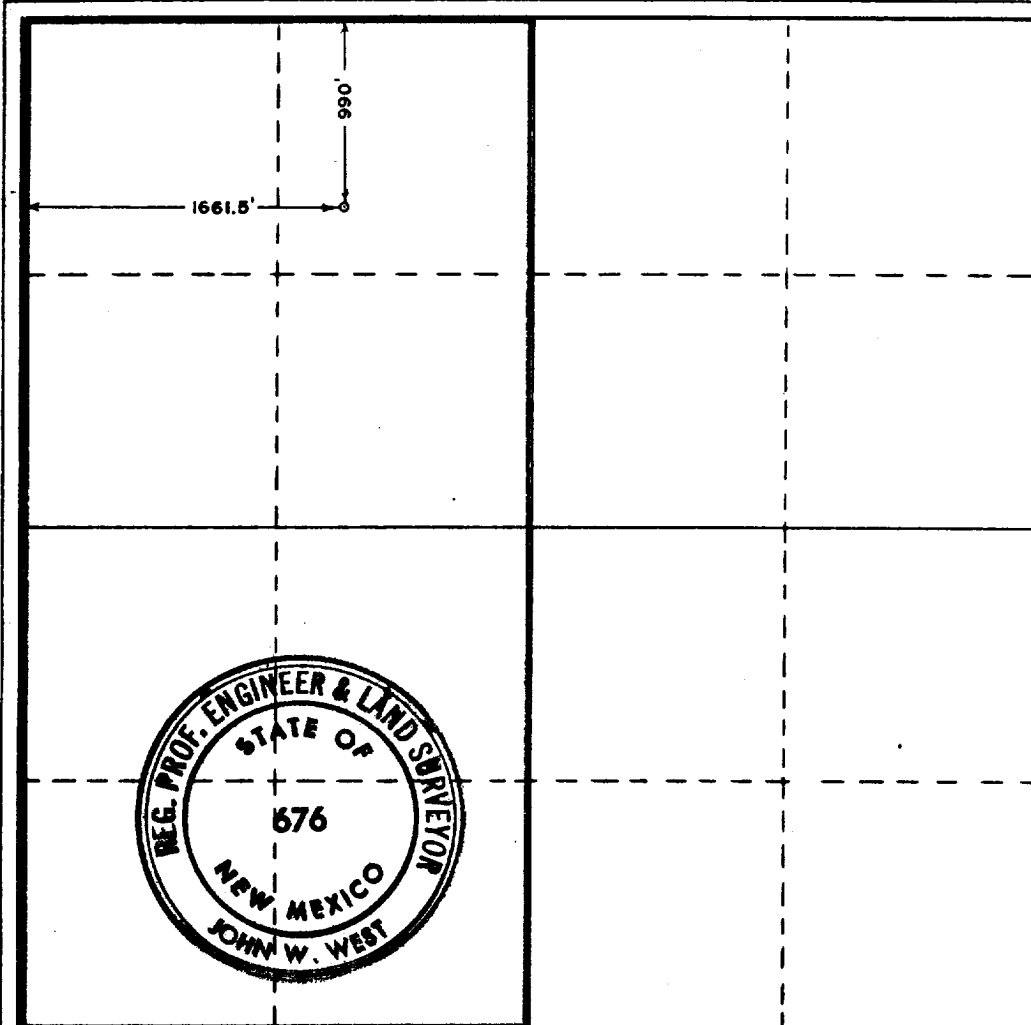
Operator READ & STEVENS, INC.		Lease HURD		Well No. 1
Unit Letter C	Section 12	Township 15 SOUTH	Range 27 EAST	County CHAVES
Actual Footage Location of Well: 990 feet from the NORTH line and 1661.5 feet from the WEST line				
Ground Level Elev. 3551.	Producing Formation Atoka	Pool <i>incl.</i> Buffalo Valley Penn.	Dedicated Acreage: W/2 320 Acres	

1. Outline the acreage dedicated to the subject well by colored pencil or hatchure marks on the plat below.
2. If more than one lease is dedicated to the well, outline each and identify the ownership thereof (both as to working interest and royalty).
3. If more than one lease of different ownership is dedicated to the well, have the interests of all owners been consolidated by communitization, unitization, force-pooling, etc?

☐ Yes ☐ No If answer is "yes," type of consolidation _____

If answer is "no," list the owners and tract descriptions which have actually been consolidated. (Use reverse side of this form if necessary.) _____

No allowable will be assigned to the well until all interests have been consolidated (by communitization, unitization, forced-pooling, or otherwise) or until a non-standard unit, eliminating such interests, has been approved by the Commission.



CERTIFICATION

I hereby certify that the information contained herein is true and complete to the best of my knowledge and belief.

Norman L. Stevens, Jr.

Name
Norman L. Stevens, Jr.

Position
Agent

Company
Read & Stevens, Inc.

Date
February 5, 1970

I hereby certify that the well location shown on this plat was plotted from field notes of actual surveys made by me or under my supervision, and that the same is true and correct to the best of my knowledge and belief.

Date Surveyed
FEBRUARY 2, 1970

Registered Professional Engineer and/or Land Surveyor

John W. West

Certificate No. **676**

0 320 640 960 1280 1600 1920 2240 2560 2880 3200 3520 3840 4160 4480 4800 5120 5440 5760 6080 6400

SUPERVISOR, OIL AND GAS OPERATIONS:

DESIGNATION OF OPERATOR

The undersigned is, on the records of the Bureau of Land Management, holder of oil and gas lease

DISTRICT LAND OFFICE: Santa Fe, New Mexico
SERIAL NO.: NM-2364

and hereby designates

NAME: Read & Stevens, Inc.
ADDRESS: P. O. Box 2126, Roswell, New Mexico 88201

as his operator and agent, with full authority to act in his behalf in complying with the terms of the lease and regulations applicable thereto and on whom the supervisor or his representative may serve written or oral instructions in securing compliance with the Oil and Gas Operating Regulations with respect to (describe acreage to which this designation is applicable):

W/2 Section 12-15S-27E
Chaves County, New Mexico

It is understood that this designation of operator does not relieve the lessee of responsibility for compliance with the terms of the lease and the Oil and Gas Operating Regulations. It is also understood that this designation of operator does not constitute an assignment of any interest in the lease.

In case of default on the part of the designated operator, the lessee will make full and prompt compliance with all regulations, lease terms, or orders of the Secretary of the Interior or his representative.

The lessee agrees promptly to notify the oil and gas supervisor of any change in the designated operator.

February 3, 1970
(Date)

Charles B. Read
(Signature of lessee)
Edward F. Stearns

P. O. Box 2126, Roswell, New Mexico 88201
(Address)