

UNITED STATES
DEPARTMENT OF THE INTERIOR
GEOLOGICAL SURVEY

APPLICATION FOR PERMIT TO DRILL, DEEPEN, OR PLUG BACK

1a. TYPE OF WORK

DRILL ☒DEEPEN ☐PLUG BACK ☐

b. TYPE OF WELL

OIL
WELL ☐GAS
WELL ☐

OTHER

SINGLE
ZONE ☐MULTIPLE
ZONE ☐

2. NAME OF OPERATOR

JACK L. MCCLELLAN

3. ADDRESS OF OPERATOR

P. O. Box 848, ROSWELL, NEW MEXICO 88201

4. LOCATION OF WELL (Report location clearly and in accordance with any State requirements.*)

At surface

330' FNL & 1650' FWL

At proposed prod. zone

14. DISTANCE IN MILES AND DIRECTION FROM NEAREST TOWN OR POST OFFICE*

1 MILES NORTH OF LOCO HILLS

15. DISTANCE FROM PROPOSED*

LOCATION TO NEAREST
PROPERTY OR LEASE LINE, FT.
(Also to nearest drlg. unit line, if any)

330'

18. DISTANCE FROM PROPOSED LOCATION*
TO NEAREST WELL, DRILLING, COMPLETED,
OR APPLIED FOR, ON THIS LEASE, FT.

1 1/2 MILES

16. NO. OF ACRES IN LEASE

960

19. PROPOSED DEPTH

1900'

17. NO. OF ACRES ASSIGNED
TO THIS WELL

40

20. ROTARY OR CABLE TOOLS

CABLE TOOLS

21. ELEVATIONS (Show whether DF, RT, GR, etc.)

3840' G. L.

22. APPROX. DATE WORK WILL START*

JUNE 1, 1970

23.

PROPOSED CASING AND CEMENTING PROGRAM

SIZE OF HOLE	SIZE OF CASING	WEIGHT PER FOOT	SETTING DEPTH	QUANTITY OF CEMENT
10-3/4"	8-5/8"	20 LB.	400'	50 SX
8"	5-1/2"	14 LB.	1900'	150 SX

WILL DRILL TO APPROXIMATELY 1900', WITH CABLE TOOLS, TO TEST THE QUEEN SAND. IF PRODUCTION IS INDICATED, WILL SET PIPE AND COMPLETE.

CORTEZ DRILLING & OPERATING COMPANY, Box 848, ROSWELL, NEW MEXICO, 88201, WILL BE THE DRILLING CONTRACTOR.

IN ABOVE SPACE DESCRIBE PROPOSED PROGRAM: If proposal is to deepen or plug back, give data on present productive zone and proposed new productive zone. If proposal is to drill or deepen directionally, give pertinent data on subsurface locations and measured and true vertical depths. Give blowout preventer program, if any.

24.

SIGNED

(This space for Federal or State office use)

TITLE

OPERATOR

DATE

MAY 1, 1970

PERMIT NO.

EXPIRATION DATE

DATE

APPROVED

CONDITIONS OF APPROVAL, IF ANY:

R. L. BEEKMA
ACTING DIRECTOR

IF APPROVAL IS NOT ENTERED IF OPERATIONS
NOT COMMENCED WITHIN 3 MONTHS.
EXPIRES AUG 6 - 1970

*See Instructions On Reverse Side

RECEIVED
MAY 1 - 1970
GEOLOGICAL SURVEY
ARTESIA, NEW MEXICO

O. C. C.
ARTESIA, NEW MEXICO

N MEXICO OIL CONSERVATION COMMISS.
WELL LOCATION AND ACREAGE DEDICATION PLAT

Form C-102
 Supersedes C-128
 Effective 1-1-65

All distances must be from the outer boundaries of the Section.

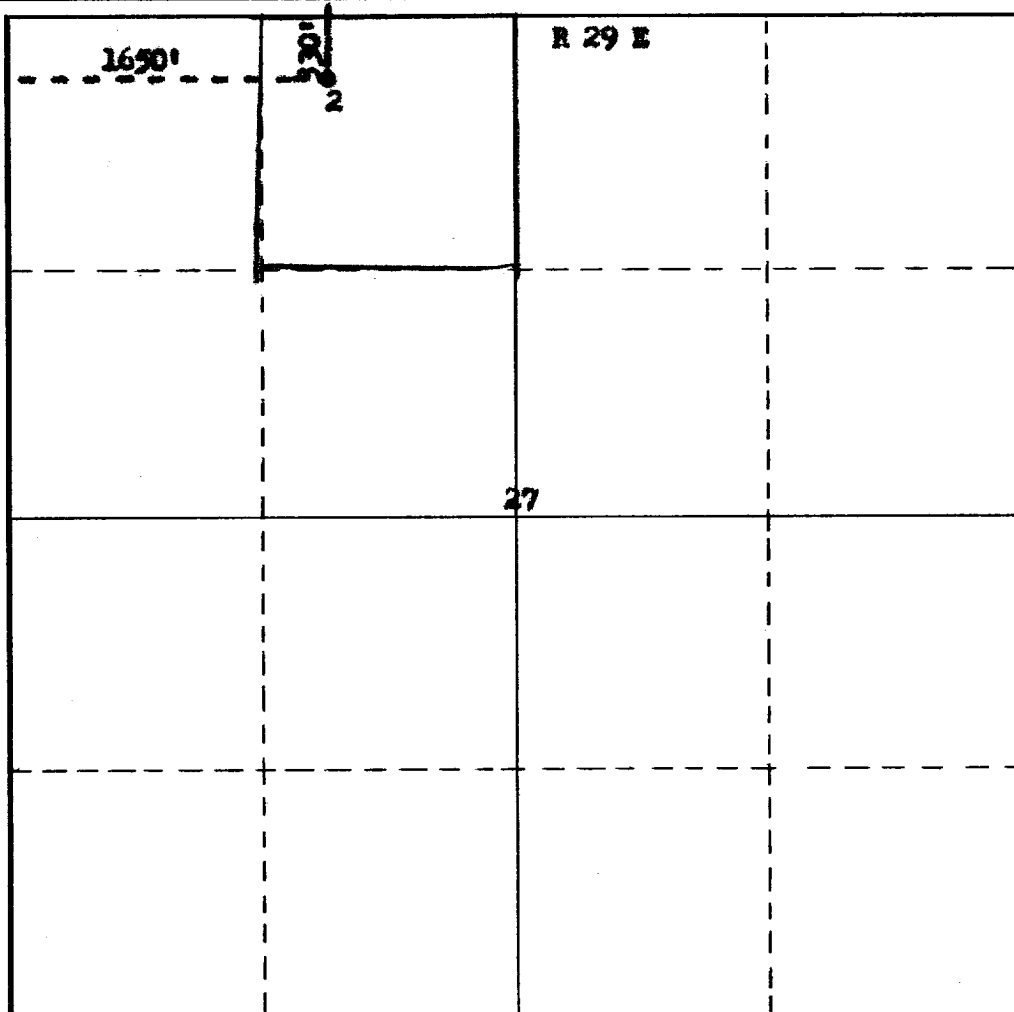
Operator Jack L. McClellan				Lease <i>gate</i> H.B. Federal		Well No. 2	
Unit Letter 0	Section 27	Township 15 South	Range 29 East		County Chaves		
Actual Footage Location of Well: 330 feet from the North line and 1650 feet from the West line							
Ground Level Elev. 3840	Producing Formation <i>Queen</i>		Pool <i>Wildcat</i>			Dedicated Acreage: 40 Acres	

1. Outline the acreage dedicated to the subject well by colored pencil or hachure marks on the plat below.
2. If more than one lease is dedicated to the well, outline each and identify the ownership thereof (both as to working interest and royalty).
3. If more than one lease of different ownership is dedicated to the well, have the interests of all owners been consolidated by communitization, unitization, force-pooling, etc?

☐ Yes ☐ No If answer is "yes," type of consolidation _____

If answer is "no," list the owners and tract descriptions which have actually been consolidated. (Use reverse side of this form if necessary.) _____

No allowable will be assigned to the well until all interests have been consolidated (by communitization, unitization, forced-pooling, or otherwise) or until a non-standard unit, eliminating such interests, has been approved by the Commission.



CERTIFICATION

I hereby certify that the information contained herein is true and complete to the best of my knowledge and belief.

Name
James H. Brown
 Position
Agent
 Company
Jack L. McClellan
 Date
May 10 1970

I hereby certify that the well location shown on this plat was determined by field notes of actual survey by me or under my supervision and that the same is true and correct to the best of my knowledge and belief.

Date Surveyed
April 30, 1970
 Registered Professional Engineer and/or *Surveyor*
James H. Brown
 Certificate No. **H.M.L.S. No. 542**

R 15 S