

UNITED STATES  
DEPARTMENT OF THE INTERIOR  
GEOLOGICAL SURVEY

## APPLICATION FOR PERMIT TO DRILL, DEEPEN, OR PLUG BACK

## 1a. TYPE OF WORK

DRILL ☒DEEPEN ☐PLUG BACK ☐

## b. TYPE OF WELL

OIL  
WELL ☐GAS  
WELL ☐

OTHER

SINGLE  
ZONE ☐MULTIPLE  
ZONE ☐

## 2. NAME OF OPERATOR

JACK L. MCCLELLAN

## 3. ADDRESS OF OPERATOR

P. O. Box 848, ROSWELL, NEW MEXICO, 88201

## 4. LOCATION OF WELL (Report location clearly and in accordance with any State requirements.)\*

At surface

660' FN &amp; EL

At proposed prod. zone

## 14. DISTANCE IN MILES AND DIRECTION FROM NEAREST TOWN OR POST OFFICE\*

20 MILES NORTH OF LOCO HILLS

## 16. DISTANCE FROM PROPOSED\*

LOCATION TO NEAREST  
PROPERTY OR LEASE LINE, FT.  
(Also to nearest drlg. unit line, if any)

## 17. NO. OF ACRES IN LEASE

680

## 18. NO. OF ACRES ASSIGNED

TO THIS WELL 40

19. DISTANCE FROM PROPOSED LOCATION\*  
TO NEAREST WELL, DRILLING, COMPLETED,  
OR APPLIED FOR, ON THIS LEASE, FT.

## 20. PROPOSED DEPTH

1950'

## 21. ROTARY OR CABLE TOOLS

CABLE TOOLS

## 22. ELEVATIONS (Show whether DF, RT, GR, etc.)

3828' G. L.

## 23. APPROX. DATE WORK WILL START\*

AUGUST 15, 1970

## 24. PROPOSED CASING AND CEMENTING PROGRAM

SIZE OF HOLE	SIZE OF CASING	WEIGHT PER FOOT	SETTING DEPTH	QUANTITY OF CEMENT
12 1/2"	8-5/8"	20 LB.	350'	150 SX (CIRC)
8"	5-1/2"	15 1/2 LB.	1950'	150 SX

PROPOSE TO DRILL THIS TEST WITH CABLE TOOLS TO TEST ALL ZONES TO THE  
PENROSE SAND.

CORTEZ DRILLING COMPANY, Box 848, ROSWELL, NEW MEXICO, WILL DRILL THE  
WELL.

RECEIVED  
AUG 14 1970RECEIVED  
AUG 11 1970  
U. S. GEOLOGICAL SURVEY  
ALBUQUERQUE, NEW MEXICO

IN ABOVE SPACE DESCRIBE PROPOSED PROGRAM: If proposal is to deepen or plug back, give data on present productive zone and proposed new productive zone. If proposal is to drill or deepen directionally, give pertinent data on subsurface locations and measured and true vertical depths. Give blowout preventer program, if any.

## 24.

SIGNED

*Jack L. McClellan*

TITLE

OPERATOR

DATE

AUGUST 5, 1970

(This space for Federal or State office use)

PERMIT NO.

APPROVAL DATE

AUG 12 1970

APPROVED BY

*John A. Kraft*

TITLE

DISTRICT ENGINEER

DATE

AUG 12 1970

CONDITIONS OF APPROVAL, IF ANY:

N MEXICO OIL CONSERVATION COMMISS.   
WELL LOCATION AND ACREAGE DEDICATION PLAT

Form C-102   
Supersedes C-128   
Effective 1-1-65

All distances must be from the outer boundaries of the Section.

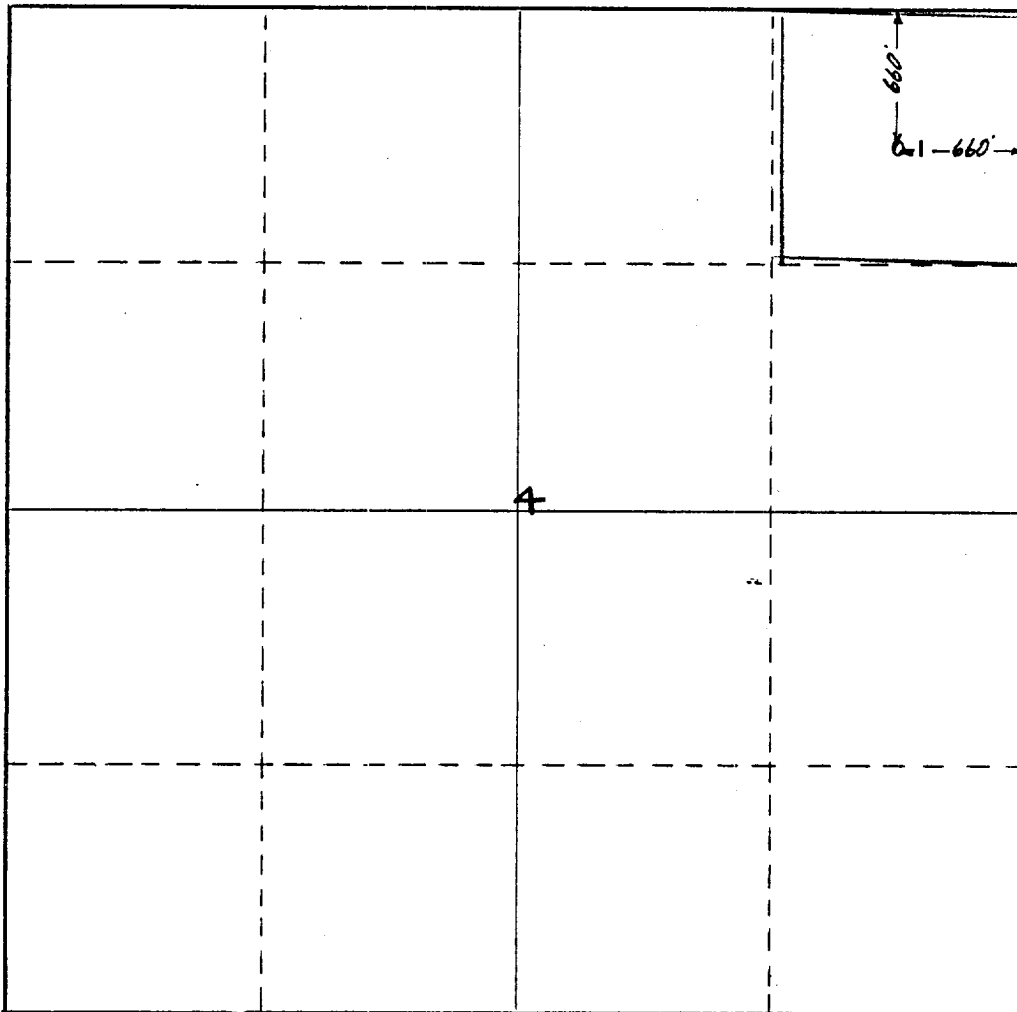
Operator <b>JACK L. MCCLELLAN</b>		Lease <b>MARK FEDERAL</b>		Well No. <b>1</b>
Unit Letter <b>A</b>	Section <b>4</b>	Township <b>15 SOUTH</b>	Range <b>29 EAST</b>	County <b>CHAVES</b>
Actual Footage Location of Well: <b>660</b> feet from the <b>NORTH</b> line and <b>660</b> feet from the <b>EAST</b> line				
Ground Level Elev. <b>3828.43</b>	Producing Formation <b>QUEEN</b>	Pool <b>WILDCAT</b>	Dedicated Acreage: <b>40</b> Acres	

1. Outline the acreage dedicated to the subject well by colored pencil or hachure marks on the plat below.
2. If more than one lease is dedicated to the well, outline each and identify the ownership thereof (both as to working interest and royalty).
3. If more than one lease of different ownership is dedicated to the well, have the interests of all owners been consolidated by communitization, unitization, force-pooling, etc?

☐ Yes ☐ No If answer is "yes;" type of consolidation \_\_\_\_\_

If answer is "no;" list the owners and tract descriptions which have actually been consolidated. (Use reverse side of this form if necessary.) \_\_\_\_\_

No allowable will be assigned to the well until all interests have been consolidated (by communitization, unitization, forced-pooling, or otherwise) or until a non-standard unit, eliminating such interests, has been approved by the Commission.



CERTIFICATION

I hereby certify that the information contained herein is true and complete to the best of my knowledge and belief.

Name  
**JACK L. MCCLELLAN**  
Position  
**OPERATOR**

Company  
**JACK L. MCCLELLAN**

Date  
**AUGUST 3, 1970**

I hereby certify that the well location shown on this plat was plotted from field notes of actual surveys made by me or under my supervision, and that the same is true and correct to the best of my knowledge and belief.

**RECEIVED**  
**AUG 11 1970**  
**JULY 29, 1970**

Date Surveyed  
**July 29, 1970**  
Registered Professional Engineer  
and/or Land Surveyor  
**Charles P. Miller**  
**182**

Certificate No.

