

UNITED STATES
DEPARTMENT OF THE INTERIOR
GEOLOGICAL SURVEY

APPLICATION FOR PERMIT TO DRILL, DEEPEN, OR PLUG BACK

1a. TYPE OF WORK

DRILL ☒DEEPEN ☐PLUG BACK ☐

b. TYPE OF WELL

OIL
WELL ☒GAS
WELL ☐

OTHER

SINGLE
ZONE ☐MULTIPLE
ZONE ☐

2. NAME OF OPERATOR

United States Smelting Refining and Mining Company

3. ADDRESS OF OPERATOR

136 E. So. Temple - 19th Fl. Univ. Club Bldg - Salt Lake City,

4. LOCATION OF WELL (Report location clearly and in accordance with any State requirements.*) Utah

At surface
2310' FNL & 2310' FWL Section 26, T-15-S, R-29-E

At proposed prod. zone

Same

14. DISTANCE IN MILES AND DIRECTION FROM NEAREST TOWN OR POST OFFICE*

Approximately 18 miles E SE of Hagerman, New Mexico

15. DISTANCE FROM PROPOSED*
LOCATION TO NEAREST
PROPERTY OR LEASE LINE, FT.
(Also to nearest drlg. unit line, if any)

330'

18. DISTANCE FROM PROPOSED LOCATION*
TO NEAREST WELL, DRILLING, COMPLETED,
OR APPLIED FOR, ON THIS LEASE, FT.None
completed

16. NO. OF ACRES IN LEASE

960

19. PROPOSED DEPTH

2300'

17. NO. OF ACRES ASSIGNED
TO THIS WELL

40

20. ROTARY OR CABLE TOOLS

Cable Tools

21. ELEVATIONS (Show whether DF, RT, GR, etc.)

3900' GR est.

22. APPROX. DATE WORK WILL START*

On approval

23.

PROPOSED CASING AND CEMENTING PROGRAM

SIZE OF HOLE	SIZE OF CASING	WEIGHT PER FOOT	SETTING DEPTH	QUANTITY OF CEMENT
12 1/4	8 5/8 O.D.	20#	425'	200 Surface
7 7/8	5 1/2 O.D.	14#	2300'	200 2000'

1. Drill 12 1/4 hole with Cable Tools to 425' and set 8 5/8 O.D. Surface casing to and cement casing with sufficient cement to circulate to surface.
2. Install Control Head and test Surface casing to 600#.
3. Drill 7 7/8 hole to 2300' and run Logs.
4. If commercial production is indicated, run and set 5 1/2 O.D. 14# casing approximately 2300' and cement with 200 sacks cement and perforate and complete fracing if necessary.

IN ABOVE SPACE DESCRIBE PROPOSED PROGRAM: If proposal is to deepen or plug back, give data on present productive zone and proposed new productive zone. If proposal is to drill or deepen directionally, give pertinent data on subsurface locations and measured and true vertical depths. Give blowout preventer program, if any. New Mexico Blanket Bond No. SY 203543 United States Blanket Bond No. 560741

24.

SIGNED T. B. Garber TITLE Manager of Oil Operations DATE September 10, 1970

(This space for Federal or State office use)

PERMIT NO. _____

APPROVED
CONDITIONS OF APPROVAL, IF ANY:SEP 14 1970
H. L. BECKMA
ACTING DISTRICT ENGINEERTHIS APPROVAL IS RECORDED IN OPERATIONS
ARE NOT COMMENCED WITHIN 3 MONTHS.
EXPIRES DEC 14 1970
*See Instructions On Reverse Side

RECEIVED

SEP 15 1970

O. C. C.
ARTESIA, OFFICE

Instructions

General: This form is designed for submitting proposals to perform certain well operations, as indicated, on all types of lands and leases for appropriate action by either a Federal or a State agency, or both, pursuant to applicable Federal and/or State laws and regulations. Any necessary special instructions concerning the use of this form and the number of copies to be submitted, particularly with regard to local, area, or regional procedures and practices, either are shown below or will be issued by, or may be obtained from, the local Federal and/or State office.

Item 1: If the proposal is to redrill to the same reservoir at a different subsurface location or to a new reservoir, use this form with appropriate notations. Consult applicable State or Federal regulations concerning subsequent work proposals or reports on the well.

Item 4: If there are no applicable State requirements, locations on Federal or Indian land should be described in accordance with Federal requirements. Consult local State or Federal office for specific instructions.

Item 14: Needed only when location of well cannot readily be found by road from the land or lease description. A plat, or plate, separate or on this reverse side, showing the roads to, and the surveyed location of, the well, and any other required information, should be furnished when required by Federal or State agency offices.

Items 15 and 18: If well is to be, or has been directionally drilled, give distances for subsurface location of hole in any present or objective production zone.

Item 22: Consult applicable Federal or State regulations, or appropriate officials, concerning approval of the proposal before operations are started.

MEXICO OIL CONSERVATION COMMISSION
WELL LOCATION AND ACREAGE DEDICATION PLAT

Form C-102
Supersedes C-128
Effective 1-1-65

All distances must be from the outer boundaries of the Section.

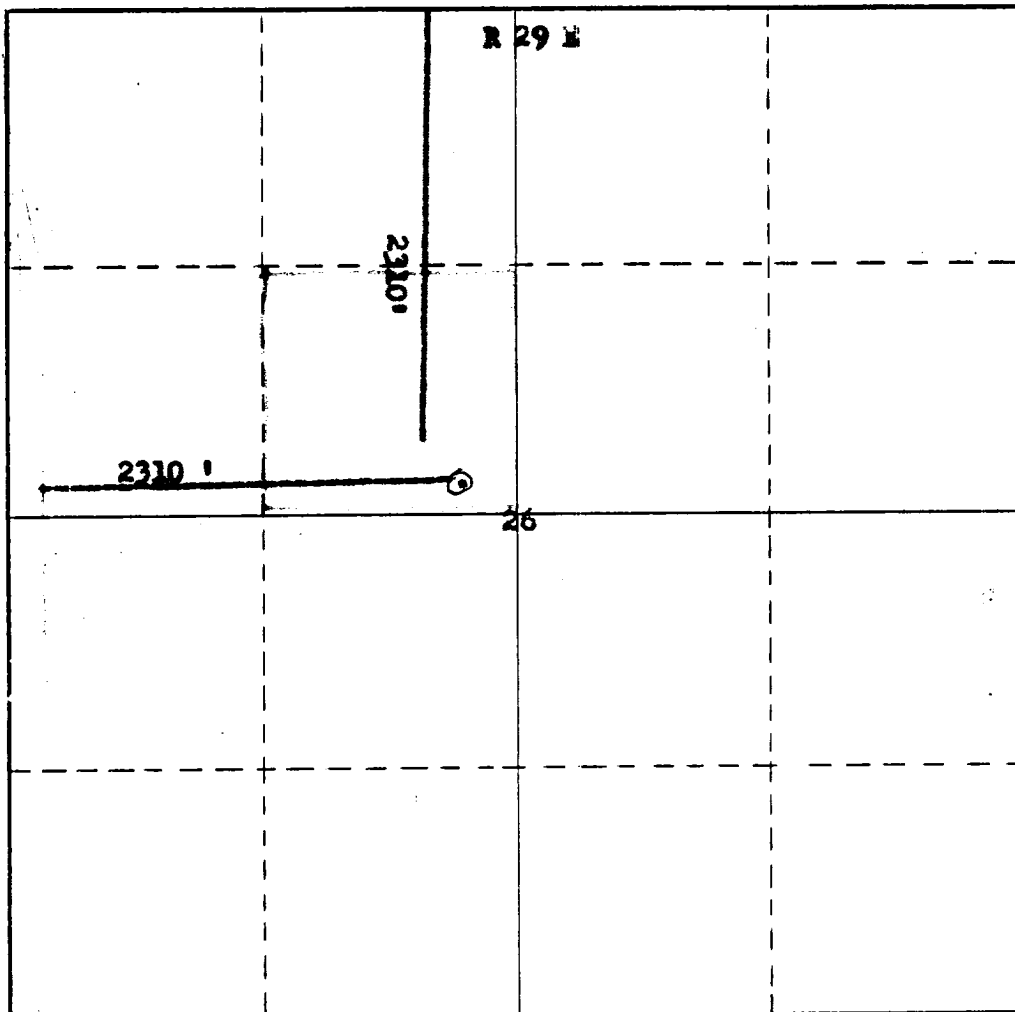
Operator UNITED STATES SMELTING, REFINING AND MINING COMPANY		Lease FEDERAL 1360		Well No. 1-86 1
Unit Letter F	Section 26	Township 15-SOUTH	Range 29-EAST	County CHAVES
Actual Footage Location of Well: 2310 feet from the NORTH line and 2310 feet from the WEST line				
Ground Level Elev. 3905	Producing Formation QUEEN SAND	Pool <i>H. Brown</i> SULIMAR	Dedicated Acreage: 40 Acres	

1. Outline the acreage dedicated to the subject well by colored pencil or hachure marks on the plat below.
2. If more than one lease is dedicated to the well, outline each and identify the ownership thereof (both as to working interest and royalty).
3. If more than one lease of different ownership is dedicated to the well, have the interests of all owners been consolidated by communitization, unitization, force-pooling, etc?

☐ Yes ☐ No If answer is "yes," type of consolidation _____

If answer is "no," list the owners and tract descriptions which have actually been consolidated. (Use reverse side of this form if necessary.) _____

No allowable will be assigned to the well until all interests have been consolidated (by communitization, unitization, forced-pooling, or otherwise) or until a non-standard unit, eliminating such interests, has been approved by the Commission.



CERTIFICATION

I hereby certify that the information contained herein is true and complete to the best of my knowledge and belief.

Name *J. M. C. O. L.*
Position **AGENT**
Company **UNITED STATES
SMELTING, REF. & MNG. CO.**
Date
SEPTEMBER 11, 1970

I hereby certify that the well location shown on this plat was plotted from field notes of actual surveys made by me or under my supervision, and that the same is true and correct to the best of my knowledge and belief.
H. BROWN

Date Surveyed
September 11th 1970
Registered Professional Engineer
and/or Land Surveyor

Certificate No. **542**