

NEW MEXICO OIL CONSERVATION COMMISSION
WELL LOCATION AND ACREAGE DEDICATION PLAT

Form C-102
Supersedes C-128
Effective 1-1-65

All distances must be from the outer boundaries of the Section.

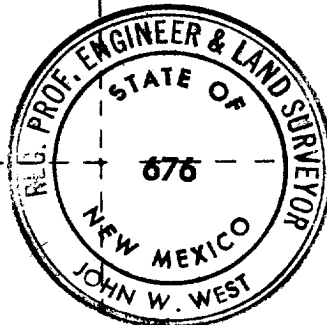
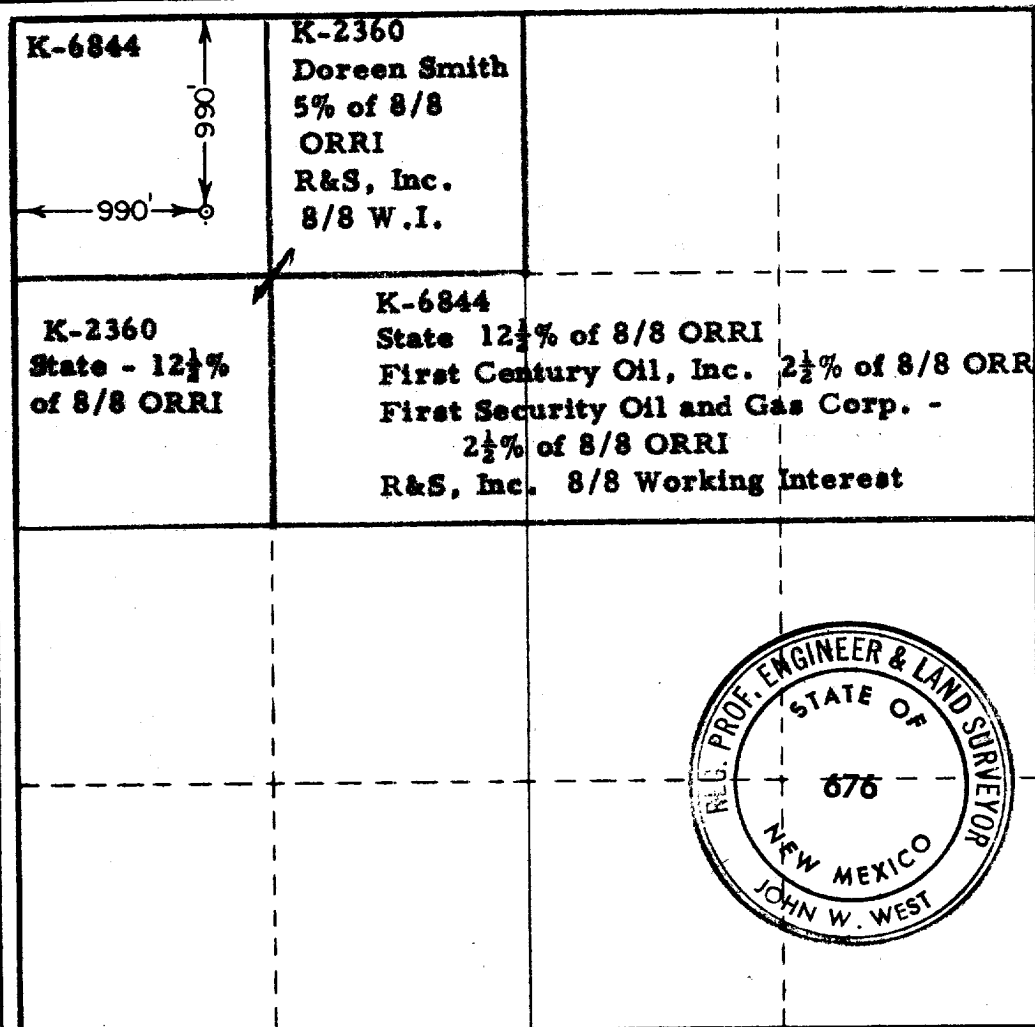
Operator READ & STEVENS, INC.			Lease PIATT State Comm		Well No. 1
Unit Letter D	Section 18	Township 15 SOUTH	Range 28 EAST	County CHAVES	
Actual Footage Location of Well: 990 feet from the NORTH line and 990 feet from the WEST line 326.27					
Ground Level Elev. 3572	Producing Formation Atoka - Marrow		Pool Buffalo Valley Penn.	Dedicated Acreage N/2 Sec. 18 Acres	

- Outline the acreage dedicated to the subject well by colored pencil or hachure marks on the plat below.
- If more than one lease is dedicated to the well, outline each and identify the ownership thereof (both as to working interest and royalty).
- If more than one lease of different ownership is dedicated to the well, have the interests of all owners been consolidated by communitization, unitization, force-pooling, etc?

☐ Yes ☒ No If answer is "yes," type of consolidation _____

If answer is "no," list the owners and tract descriptions which have been consolidated (if production is established) side of this form if necessary.) **Communitization to be accomplished if commercial production is established.**

No allowable will be assigned to the well until all interests have been consolidated (by communitization, unitization, forced-pooling, or otherwise) or until a non-standard unit, eliminating such interests, has been approved by the Commission.



CERTIFICATION

I hereby certify that the information contained herein is true and complete to the best of my knowledge and belief.

Norman L. Stevens, Jr.

Name
Norman L. Stevens, Jr.

Position
Agent

Company
Read & Stevens, Inc.

Date
February 3, 1971

I hereby certify that the well location shown on this plat was plotted from field notes of actual surveys made by me or under my supervision, and that the same is true and correct to the best of my knowledge and belief.

Date Surveyed

FEBRUARY 2, 1971

Registered Professional Engineer and/or Land Surveyor

John W. West

Certificate No. **676**

0 330 660 990 1320 1650 1980 2310 2640 2000 1500 1000 500 0