

MEXICO OIL CONSERVATION COMMISS
WELL LOCATION AND ACREAGE DEDICATION PLAT

Form C-102
 Supercedes C-128
 Effective 1-1-65

All distances must be from the outer boundaries of the Section.

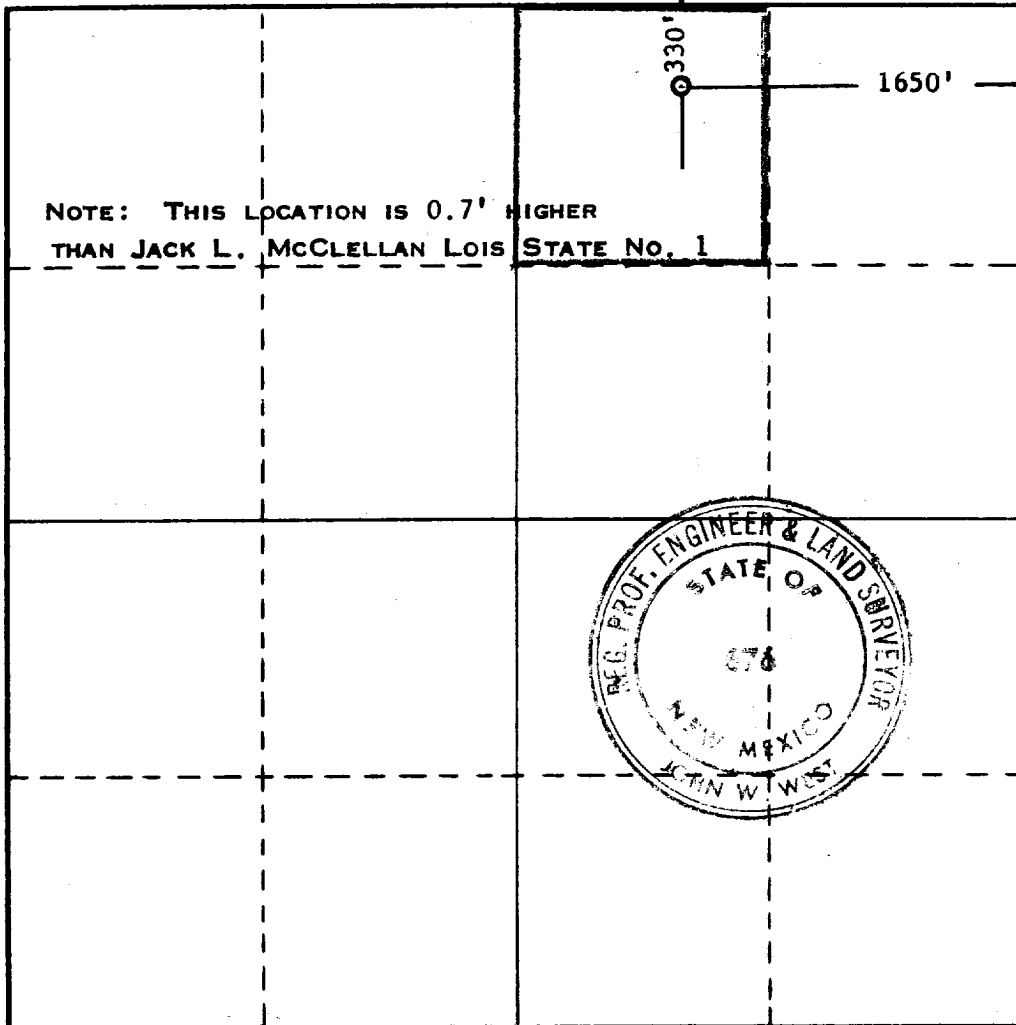
Operator WOLFSON OIL COMPANY			Lease AMERADA C FEDERAL		Well No. 1
Unit Letter B	Section 12	Township 15 SOUTH	Range 29 E	County CHAVES	
Actual Footage Location of Well: 330 feet from the NORTH line and 1650 feet from the EAST line					
Ground Level Elev. 3890	Producing Formation Queen	Pool Double L. Queen		Dedicated Acreage: 1.0 Acres	

1. Outline the acreage dedicated to the subject well by colored pencil or hachure marks on the plat below.
2. If more than one lease is dedicated to the well, outline each and identify the ownership thereof (both as to working interest and royalty).
3. If more than one lease of different ownership is dedicated to the well, have the interests of all owners been consolidated by communitization, unitization, force-pooling, etc?

☐ Yes ☐ No If answer is "yes," type of consolidation _____

If answer is "no," list the owners and tract descriptions which have actually been consolidated. (Use reverse side of this form if necessary.) _____

No allowable will be assigned to the well until all interests have been consolidated (by communitization, unitization, forced-pooling, or otherwise) or until a non-standard unit, eliminating such interests, has been approved by the Commission.



CERTIFICATION

I hereby certify that the information contained herein is true and complete to the best of my knowledge and belief.

[Signature]
 Name
H.C. Freedman

Position

Prod. Mgr.

Company

Wolfson Oil Co.

Date

1-4-71

I hereby **RECEIVED** the well location shown on this plat was plotted from field notes of actual surveys made by me and under my supervision, and that the same is true and correct to the best of my knowledge and belief.

Date Surveyed

1-5-1971

Registered Professional Engineer and/or Land Surveyor

[Signature]
 Certificate No. **676**

0 320 640 960 1280 1600 1920 2240 2560 2880 3200 3520 3840 4160 4480 4800 5120 5440 5760 6080 6400