

NEW MEXICO OIL CONSERVATION COMMISSION
WELL LOCATION AND ACREAGE DEDICATION PLAT

Copy to SJE
2/8/81
Form C-102
Supersedes C-128
Effective 1-1-65

All distances must be from the outer boundaries of the Section.

Operator Dalport Oil Corporation		Lease Jones-Federal		Well No. 1
Unit Letter I	Section 22	Township 15S	Range 29E	County Chaves
Actual Footage Location of Well: 2310 feet from the south line and 330 feet from the west line				
Ground Level Elev. 3840	Producing Formation Queen	Pool Southwest Chaves Queen Bosque	Dedicated Acreage: 320 Acres	

1. Outline the acreage dedicated to the subject well by colored pencil or hachure marks on the plat below.
2. If more than one lease is dedicated to the well, outline each and identify the ownership thereof (both as to working interest and royalty).
3. If more than one lease of different ownership is dedicated to the well, have the interests of all owners been consolidated by communitization, unitization, force-pooling, etc?

MAR 18 1974

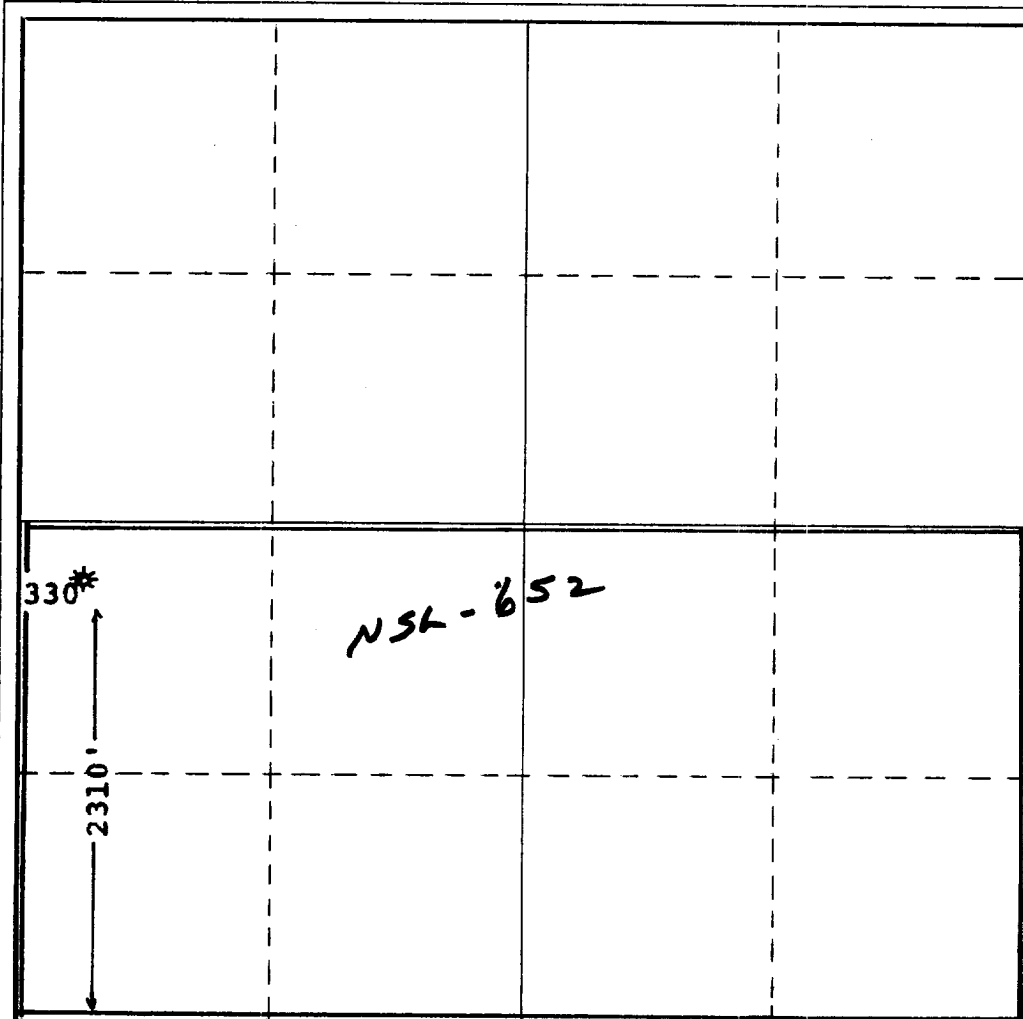
☐ Yes ☐ No If answer is "yes," type of consolidation _____

B. G. G.

ARTESIA, OFFICE

If answer is "no," list the owners and tract descriptions which have actually been consolidated. (Use reverse side of this form if necessary.) _____

No allowable will be assigned to the well until all interests have been consolidated (by communitization, unitization, forced-pooling, or otherwise) or until a non-standard unit, eliminating such interests, has been approved by the Commission.



CERTIFICATION

I hereby certify that the information contained herein is true and complete to the best of my knowledge and belief.

Leon M. Lampert
Name

Leon M. Lampert
Position

Geologist
Company

Dalport Oil Corporation
Date

March 15, 1974

I hereby certify that the well location shown on this plat was plotted from field notes of actual surveys made by me or under my supervision, and that the same is true and correct to the best of my knowledge and belief.

**See original Wildcat C-102
filed on January 17, 1972**

Date Surveyed

Registered Professional Engineer
and/or Land Surveyor

Certificate No.

