

NO. OF COPIES RECEIVED	5
DISTRIBUTION	
SANTA FE	1
FILE	1
U.S.G.S.	2
LAND OFFICE	
OPERATOR	1

NEW MEXICO OIL CONSERVATION COMMISSION

MAR 27 1972

O. C. C.  
ARTESIA, OFFICE

30-005-60211

Form C-101  
Revised 1-1-65

5A. Indicate Type of Lease  
STATE ☐ FEE ☒

5. State Oil & Gas Lease No.

--

APPLICATION FOR PERMIT TO DRILL, DEEPEN, OR PLUG BACK

1a. Type of Work DRILL <input checked="" type="checkbox"/> DEEPEN <input type="checkbox"/> PLUG BACK <input type="checkbox"/>		7. Unit Agreement Name --
b. Type of Well OIL WELL <input type="checkbox"/> GAS WELL <input checked="" type="checkbox"/> OTHER <input type="checkbox"/> SINGLE ZONE <input type="checkbox"/> MULTIPLE ZONE <input type="checkbox"/>		8. Farm or Lease Name Hagerman
2. Name of Operator Pubco Petroleum Corporation		9. Well No. 1
3. Address of Operator P. O. Box 869, Albuquerque, New Mexico 87103		10. Field and Pool, or Wildcat Wildcat
4. Location of Well UNIT LETTER F LOCATED 1980 FEET FROM THE North LINE AND 1980 FEET FROM THE West LINE OF SEC. 13 TWP. 15S RGE. 26E NMPM		12. County Sandoval
19. Proposed Depth 8500'		19A. Formation Morrow
20. Rotary or C.T. Rotary		
21. Elevations (Show whether DF, RT, etc.) 3357 GR	21A. Kind & Status Plug. Bond Blanket	21B. Drilling Contractor Ard Drilling Company
22. Approx. Date Work will start May 8, 1972		

23.

PROPOSED CASING AND CEMENT PROGRAM

SIZE OF HOLE	SIZE OF CASING	WEIGHT PER FOOT	SETTING DEPTH	SACKS OF CEMENT	EST. TOP
17-1/2"	13-3/8"	72#	300'	320	circulate
12-1/4"	8-5/8"	24#, J-55	1600'	850	circulate
7-7/8"	4-1/2"	11.6#, 10.5# & 9.5#	8500'	400	7000'

Propose to drill with rotary tools to total depth of 8500' or 100' into the Chester Limestone, whichever is the lessor, using the above hole and casing program. All significant shows will be tested. We anticipate running the following logs: Induction Electric Log, Borehole Compensated Sonic Gamma-ray, Microlog. Will cement across all potentially productive zones. If a dry hole, will plug and abandon as directed by the New Mexico Oil Conservation Commission.

Cement will be circulated on both 13-3/8" and 8-5/8" casing. A series 900 double-ram preventer with a remote control station will be used. Relief line and choke manifolds will be hooked up as shown in API Bulletin D-13.

APPROVAL VALID  
FOR 90 DAYS UNLESS  
DRILLING COMMENCED,  
EXPIRES 6-27-72

IN ABOVE SPACE DESCRIBE PROPOSED PROGRAM; IF PROPOSAL IS TO DEEPEN OR PLUG BACK, GIVE DATA ON PRESENT PRODUCTIVE ZONE. GIVE BLOWOUT PREVENTER PROGRAM, IF ANY.

I hereby certify that the information above is true and complete to the best of my knowledge and belief.

Signed J. C. Johnson Title Vice President Production Date March 23, 1972  
(This space for State Use)

APPROVED BY W. A. Gressett TITLE State Engineer DATE MAR 27 1972  
CONDITIONS OF APPROVAL, IF ANY:

Notify N.M.O.C.C. in sufficient  
time to witness cementing

the 8 3/8" casing

**MEXICO OIL CONSERVATION COMMISSION  
WELL LOCATION AND ACREAGE DEDICATION PLAT**

Form C-102  
Supersedes C-128  
Effective 1-1-65

All distances must be from the outer boundaries of the Section.

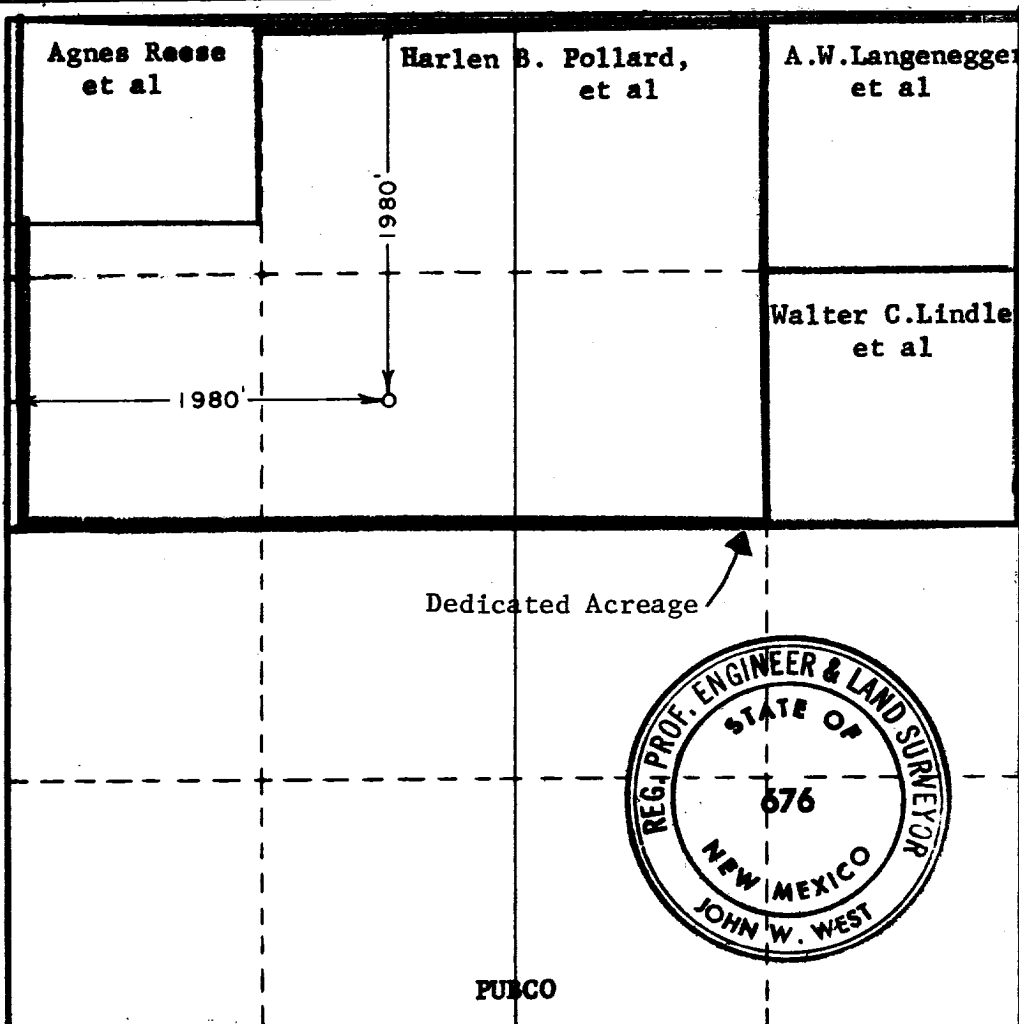
Operator <b>PUBCO PETROLEUM CORP.</b>			Lease <b>HAGERMAN</b>		Well No. <b>1</b>
Unit Letter <b>F</b>	Section <b>13</b>	Township <b>15 SOUTH</b>	Range <b>26 EAST</b>	County <b>CHAVES</b>	
Actual Footage Location of Well: <b>1980</b> feet from the <b>NORTH</b> line and <b>1980</b> feet from the <b>WEST</b> line					
Ground Level Elev. <b>3357.0</b>	Producing Formation <b>MORROW</b>		Pool <b>WILDCAT</b>	Dedicated Acreage: <b>320</b> Acres	

1. Outline the acreage dedicated to the subject well by colored pencil or hachure marks on the plat below.
2. If more than one lease is dedicated to the well, outline each and identify the ownership thereof (both as to working interest and royalty).
3. If more than one lease of different ownership is dedicated to the well, have the interests of all owners been consolidated by communitization, unitization, force-pooling, etc?

☒ Yes    ☐ No    If answer is "yes," type of consolidation **DECLARATION OF POOLING AGREEMENT**

If answer is "no," list the owners and tract descriptions which have actually been consolidated. (Use reverse side of this form if necessary.) \_\_\_\_\_

No allowable will be assigned to the well until all interests have been consolidated (by communitization, unitization, forced-pooling, or otherwise) or until a non-standard unit, eliminating such interests, has been approved by the Commission.



**CERTIFICATION**

I hereby certify that the information contained herein is true and complete to the best of my knowledge and belief.

*J. C. Johnson*  
Name

**J. C. Johnson**

Position

**Vice President Production**

Company

**Pubco Petroleum Corporation**

Date

**March 23, 1972**

I hereby certify that the well location shown on this plat was plotted from field notes of actual surveys made by me or under my supervision, and that the same is true and correct to the best of my knowledge and belief.

Date Surveyed

**JANUARY 8, 1972**

Registered Professional Engineer and/or Land Surveyor

*John W. West*

Certificate No.

**676**

