

UNITED STATES
DEPARTMENT OF THE INTERIOR
GEOLOGICAL SURVEY

APPLICATION FOR PERMIT TO DRILL, DEEPEN, OR PLUG BACK

1a. TYPE OF WORK

DRILL ☒DEEPEN ☐PLUG BACK ☐

b. TYPE OF WELL

OIL
WELL ☒GAS
WELL ☐OTHER ☐SINGLE
ZONE ☒MULTIPLE
ZONE ☐

2. NAME OF OPERATOR

Yates Petroleum Corporation

3. ADDRESS OF OPERATOR

207 South 4th Street - Artesia, New Mexico 88210

4. LOCATION OF WELL (Report location clearly and in accordance with any State requirements.)*

At surface

990' FSL & 330' FEL of Sec. 27-15S-29E

At proposed prod. zone

Same

14. DISTANCE IN MILES AND DIRECTION FROM NEAREST TOWN OR POST OFFICE*

11 miles north of Loco Hills, New Mexico

10. DISTANCE FROM PROPOSED*

LOCATION TO NEAREST

PROPERTY OR LEASE LINE, FT.

(Also to nearest drlg. unit line, if any)

330'

16. NO. OF ACRES IN LEASE

860

17. NO. OF ACRES ASSIGNED
TO THIS WELL

40

18. DISTANCE FROM PROPOSED LOCATION*

TO NEAREST WELL, DRILLING, COMPLETED,
OR APPLIED FOR, ON THIS LEASE, FT.

1320'

19. PROPOSED DEPTH

2000'

20. ROTARY OR CABLE TOOLS

Cable

21. ELEVATIONS (Show whether DF, RT, GR, etc.)

385' SUR

22. APPROX. DATE WORK WILL START*

See same to go on

23.

PROPOSED CASING AND CEMENTING PROGRAM

SIZE OF HOLE	SIZE OF CASING	WEIGHT PER FOOT	SETTING DEPTH	QUANTITY OF CEMENT
10 1/4"	8 5/8"	20#	300'	150 SX
8"	5 1/2" or 7"	15.5# & 20#	2000'	50 SX

Propose to test the Queen Sand to a depth of approximately 2000' and if commercial, will run a tapered string of 7" and 5 1/2" production casing.

IN ABOVE SPACE DESCRIBE PROPOSED PROGRAM: If proposal is to deepen or plug back, give data on present productive zone and proposed new productive zone. If proposal is to drill or deepen directionally, give pertinent data on subsurface locations and measured and true vertical depths. Give blowout preventer program, if any.

24.

SIGNED

E. L. BEEKMAN

TITLE

Engineer

DATE

3-30-72

(This space for Federal or State office use)

PERMIT NO.

APPROVAL DATE

APPROVED

CONDITIONS OF APPROVAL, IF ANY:

MAR 30 1972

R. L. BEEKMAN

ACTING DISTRICT ENGINEER

THIS APPROVAL IS RECORDED IF OPERATIONS
ARE NOT COMMENCED WITHIN 3 MONTHS
EXPIRES JUN 30 1972

*See Instructions On Reverse Side

MEXICO OIL CONSERVATION COMMISSION
WELL LOCATION AND ACREAGE DEDICATION PLAT

Form C-102
 Supersedes C-128
 Effective 1-1-65

All distances must be from the outer boundaries of the Section.

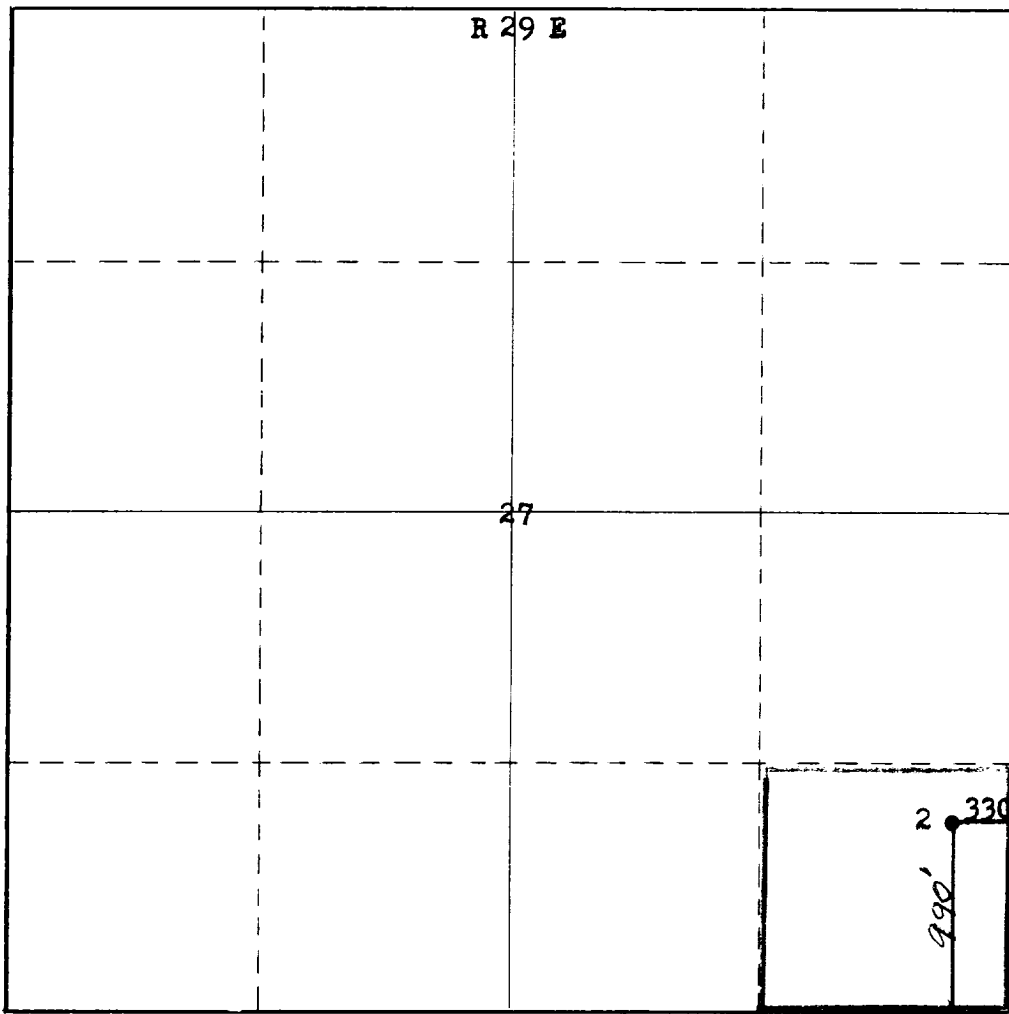
Operator YATES PETROLEUM CORPORATION			Lease FEDERAL CL		Well No. 2
Unit Letter P	Section 27	Township 15 South	Range 29 East	County Chaves	
Actual Footage Location of Well: 990 feet from the South line and 330 feet from the East line					
Ground Level Elev. 3850	Producing Formation Queen		Pool Sullimar	Dedicated Acreage: 40 Acres	

1. Outline the acreage dedicated to the subject well by colored pencil or hachure marks on the plat below.
2. If more than one lease is dedicated to the well, outline each and identify the ownership thereof (both as to working interest and royalty).
3. If more than one lease of different ownership is dedicated to the well, have the interests of all owners been consolidated by communitization, unitization, force-pooling, etc?

☐ Yes ☐ No If answer is "yes," type of consolidation _____

If answer is "no," list the owners and tract descriptions which have actually been consolidated. (Use reverse side of this form if necessary.) _____

No allowable will be assigned to the well until all interests have been consolidated (by communitization, unitization, forced-pooling, or otherwise) or until a non-standard unit, eliminating such interests, has been approved by the Commission.



CERTIFICATION

I hereby certify that the information contained herein is true and complete to the best of my knowledge and belief.

Eddie M. Mahfood
 Name
Eddie M. Mahfood

Position
Engineer

Company
Yates Petroleum Corp.

3-30-72

RECEIVED
 I hereby certify that the well location shown on this plat was located from field notes of a 40-acre survey made by me or under my supervision, and that the same is true and correct to the best of my knowledge and belief.
 U.S. GEOLOGICAL SURVEY
 JAMES H. BROWN

Date Surveyed

March 29th, 1972

Registered Professional Engineer and/or Land Surveyor

James H. Brown
 Certificate No. **542**

T
15
S