

UNITED STATES
DEPARTMENT OF THE INTERIOR
GEOLOGICAL SURVEY

APPLICATION FOR PERMIT TO DRILL, DEEPEN, OR PLUG BACK

1a. TYPE OF WORK

DRILL ☒DEEPEN ☐PLUG BACK ☐

b. TYPE OF WELL

OIL
WELL ☒GAS
WELL ☐

OTHER

SINGLE
ZONE ☒MULTIPLE
ZONE ☐

2. NAME OF OPERATOR

McCLELLAN OIL CORPORATION

3. ADDRESS OF OPERATOR

Box 848 - ROSWELL, NEW MEXICO 88201

4. LOCATION OF WELL (Report location clearly and in accordance with any State requirements.)*

At surface

1980 FNL & 660 FWL

At proposed prod. zone

14. DISTANCE IN MILES AND DIRECTION FROM NEAREST TOWN OR POST OFFICE*

16 MILES NORTH OF LOCO HILLS

B.B.E.
ARTESIA, OFFICE

10. DISTANCE FROM PROPOSED*

LOCATION TO NEAREST
PROPERTY OR LEASE LINE, FT.
(Also to nearest drlg. unit line, if any)

660'

16. NO. OF ACRES IN LEASE

160

17. NO. OF ACRES ASSIGNED
TO THIS WELL

40

18. DISTANCE FROM PROPOSED LOCATION*
TO NEAREST WELL, DRILLING, COMPLETED,
OR APPLIED FOR, ON THIS LEASE, FT.

19. PROPOSED DEPTH

1950

20. ROTARY OR CABLE TOOLS

CABLE TOOLS

21. ELEVATIONS (Show whether DF, RT, GR, etc.)

3936' GL

22. APPROX. DATE WORK WILL START*

23.

PROPOSED CASING AND CEMENTING PROGRAM

SIZE OF HOLE	SIZE OF CASING	WEIGHT PER FOOT	SETTING DEPTH	QUANTITY OF CEMENT
10 1/4	8 5/8	20 LB	325	100 SX CIRCL
8	5 1/2	15 1/2 LB	1950	150 SX

WILL DRILL TO 1950' TO TEST THE QUEEN SAND ZONE. IF PRODUCTION IS
INDICATED, WILL RUN 5 1/2" CSG AND ATTEMPT COMPLETION.

CORTEZ DRILLING COMPANY, Box 848, ROSWELL, NEW MEXICO WILL BE THE
DRILLING CONTRACTOR.

RECEIVED
AUG 18 1972
U. S. GEOLOGICAL SURVEY
ARTESIA, NEW MEXICO

IN ABOVE SPACE DESCRIBE PROPOSED PROGRAM: If proposal is to deepen or plug back, give data on present productive zone and proposed new productive zone. If proposal is to drill or deepen directionally, give pertinent data on subsurface locations and measured and true vertical depths. Give blowout preventer program, if any.

24.

SIGNED

Joe L. McClellan

TITLE

PRESIDENT

DATE

AUGUST 17, 1972

(This space for Federal or State office use)

AUG 30 1972

PERMIT NO.

APPROVAL DATE

APPROVED BY

CONDITIONS OF APPROVAL, IF ANY:

TITLE

DISTRICT ENGINEER

DATE

AUG 30 1972

**NEW MEXICO OIL CONSERVATION COMMISSION
WELL LOCATION AND ACREAGE DEDICATION PLAT**

Form C-102
Supersedes C-128
Effective 1-1-65

All distances must be from the outer boundaries of the Section

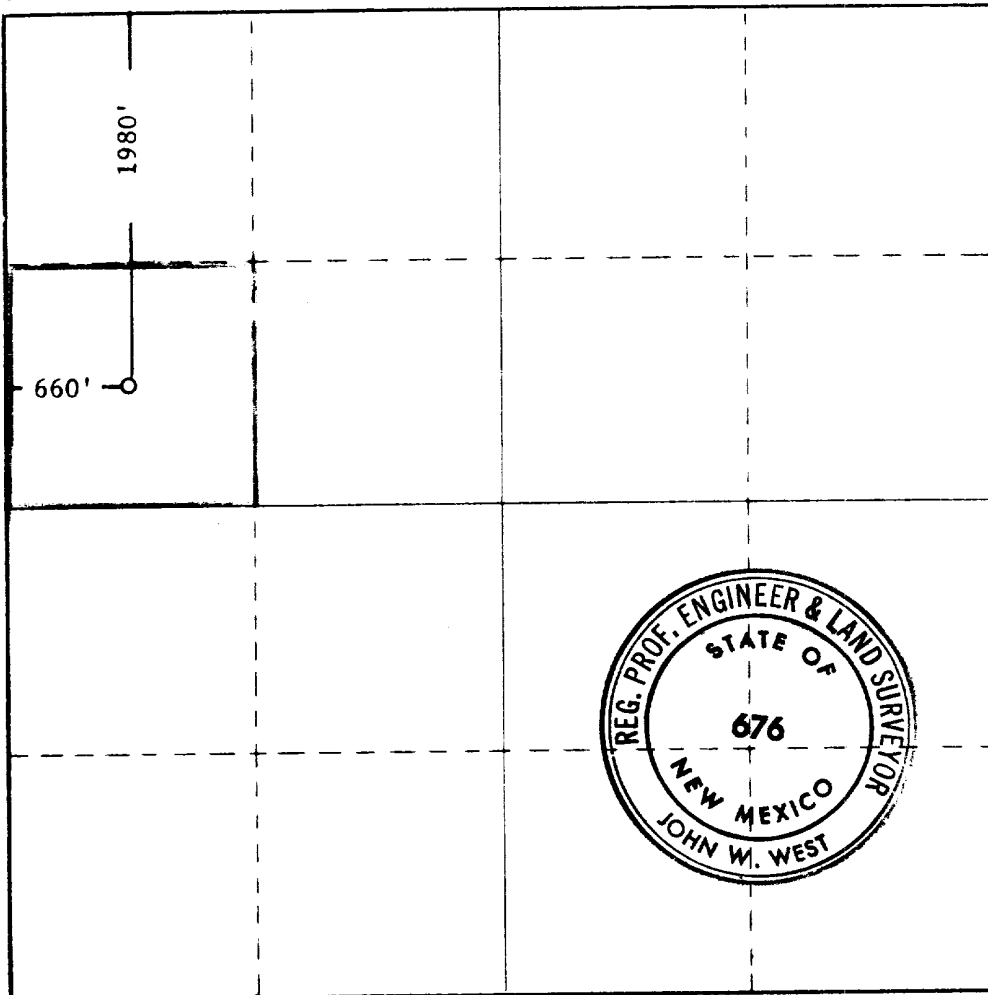
Operator MCCLELLAN OIL CORP.			Lease AL FIN		Well No. #1
Unit Letter E	Section 14	Township 15 SOUTH	Range 29 EAST	County CHAVES	
Actual Footage Location of Well: 1980 feet from the NORTH line and 660 feet from the WEST line					
Ground Level Elev. 3935.7	Producing Formation QUEEN	Pool <i>Lucky Lake Over</i> WILDCAT		Dedicated Acreage: 40 Acres	

1. Outline the acreage dedicated to the subject well by colored pencil or hachure marks on the plat below.
2. If more than one lease is dedicated to the well, outline each and identify the ownership thereof (both as to working interest and royalty).
3. If more than one lease of different ownership is dedicated to the well, have the interests of all owners been consolidated by communitization, unitization, force-pooling, etc?

☐ Yes ☐ No If answer is "yes," type of consolidation _____

If answer is "no," list the owners and tract descriptions which have actually been consolidated. (Use reverse side of this form if necessary.) _____

No allowable will be assigned to the well until all interests have been consolidated (by communitization, unitization, forced-pooling, or otherwise) or until a non-standard unit, eliminating such interests, has been approved by the Commission.



CERTIFICATION

I hereby certify that the information contained herein is true and complete to the best of my knowledge and belief.

John J. McClellan

President

PRESIDENT

Company
MCCLELLAN OIL CORPORATION

Date
AUGUST 17, 1972

I hereby certify that the well location shown on this plat was plotted from field notes of actual survey made by me or, under my supervision, and that the same is true and correct to the best of my knowledge and belief.

RECEIVED
AUG 18 1972

Date Surveyed
8-10-1972

Registered Professional Engineer and/or Land Surveyor

John W. West

Certificate No. **676**

0 330 660 990 1320 1650 1980 2310 2640 2000 1800 1000 500 0

McCLELLAN OIL CORPORATION

-DACK-E-McCLELLAN-

GEOLOGIST AND OIL PRODUCER

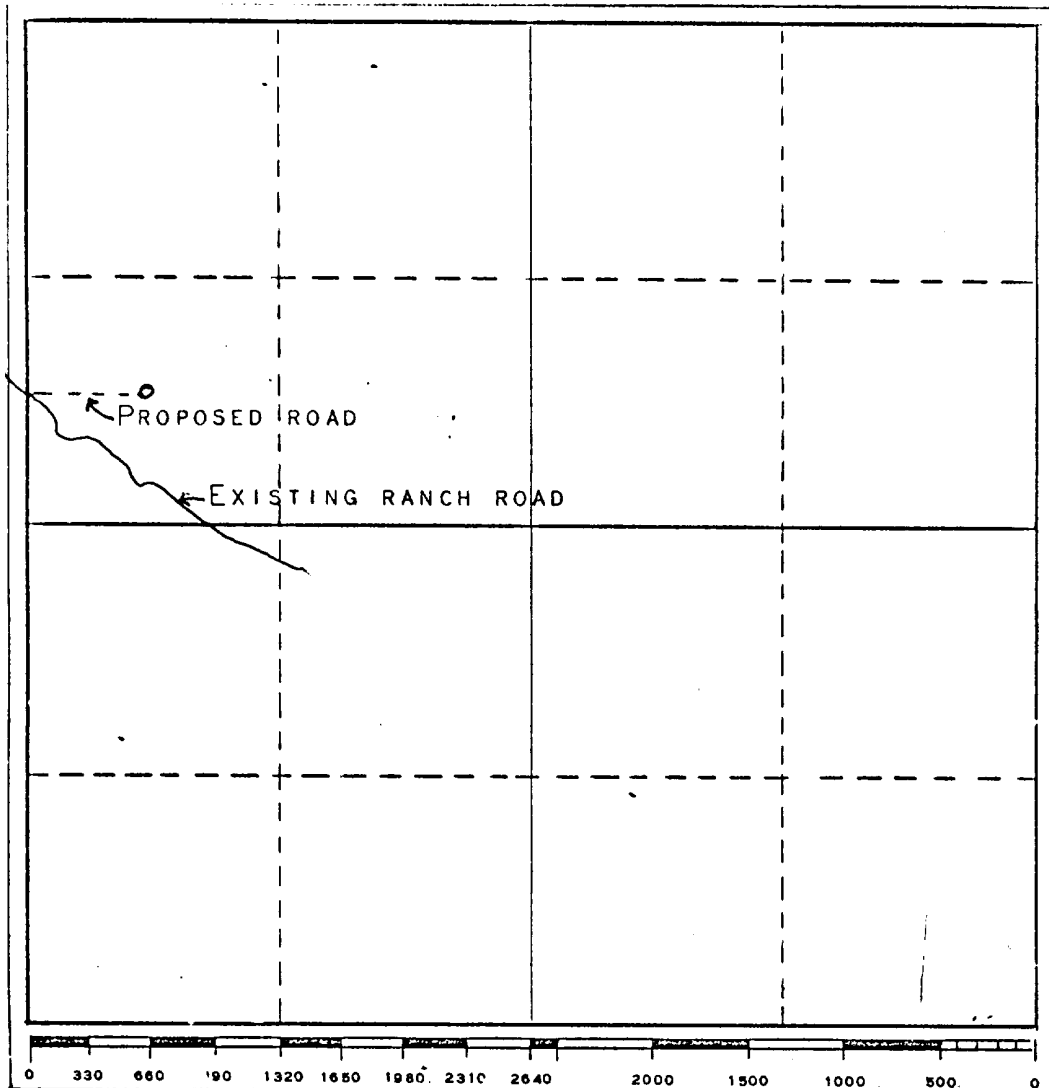
P. O. BOX 848

ROSWELL, NEW MEXICO 88201

SUITE 814
PETROLEUM BUILDING

805 622-3200 OFFICE
805 622-4076 HOME

PLAN OF DEVELOPMENT FOR AL FIN #1



PROPOSE TO IMPROVE EXISTING RANCH ROAD AND BLADE APPROXIMATELY 660' OF NEW ROAD INTO LOCATION.

THERE IS NO WATER ON LOCATION AND DRILLING WATER WILL BE TRUCKED.

COMBUSTIBLE MATERIAL WILL BE BURNED, NON-COMBUSTIBLE MATERIAL WILL BE BURIED WITH PIT FILLING.

AFTER COMPLETION OR ABANDONMENT, THE PIT WILL BE FILLED AND THE LOCATION CLEARED.

RECEIVED
AUG 18 1972
U. S. GEOLOGICAL SURVEY
ARTESIA, NEW MEXICO

