

NEW MEXICO OIL CONSERVATION COMMISSION
 WELL LOCATION AND ACREAGE DEDICATION PLAT

Form C-102
 Supersedes C-128
 Effective 1-1-65

All distances must be from the outer boundaries of the Section.

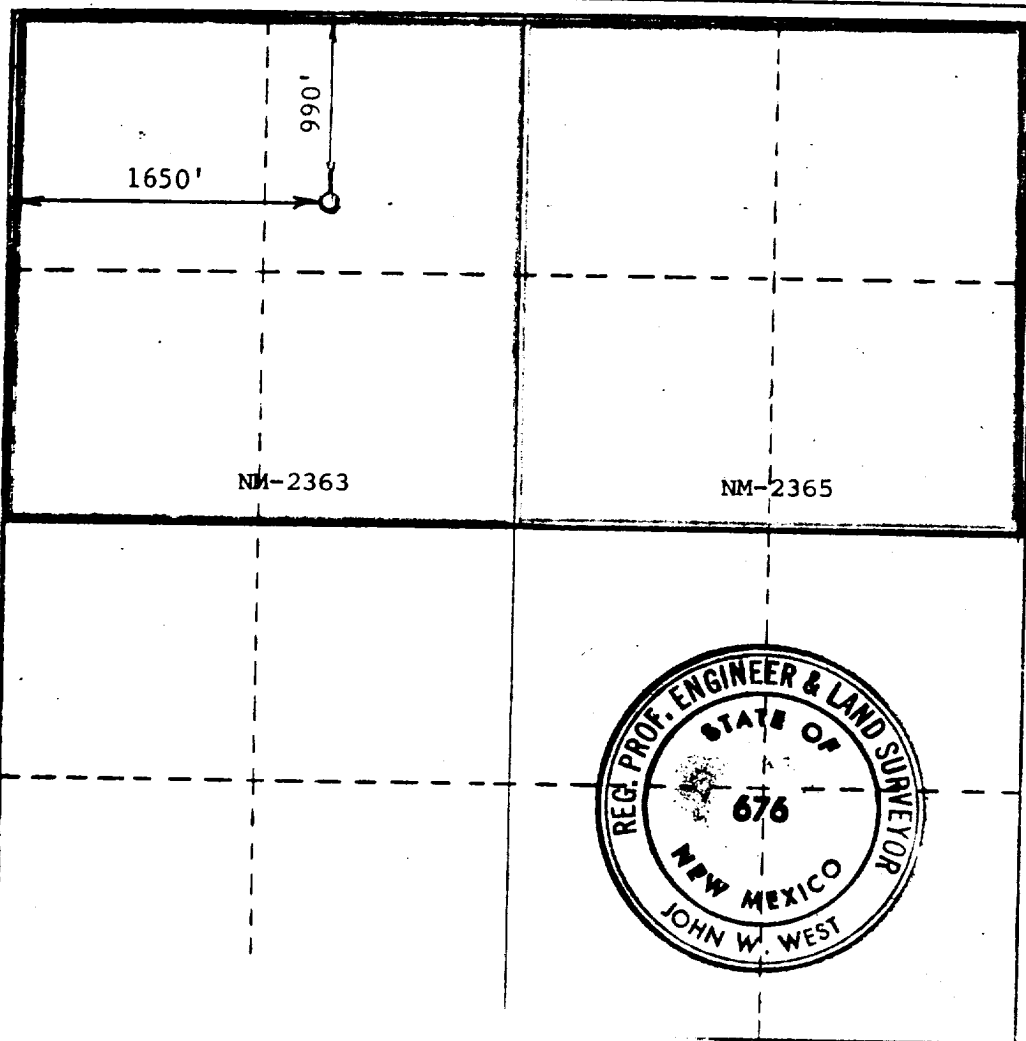
Operator READ & STEVENS, INC.			Lease LANGLEY "COMM"		Well No. 1
Unit Letter C	Section 13	Township 15 SOUTH	Range 27 EAST	County CHAVES	
Actual Footage Location of Well: 990 feet from the NORTH line and 1650 feet from the WEST line					
Ground Level Elev.	Producing Formation Atoka		Pool Buffalo Valley	Dedicated Acreage: 320 Acres	

1. Outline the acreage dedicated to the subject well by colored pencil or hatchure marks on the plat below.
2. If more than one lease is dedicated to the well, outline each and identify the ownership thereof (both as to working interest and royalty).
3. If more than one lease of different ownership is dedicated to the well, have the interests of all owners been consolidated by communitization, unitization, force-pooling, etc?

☒ Yes ☐ No If answer is "yes," type of consolidation Leases to be communitized if productive.

If answer is "no," list the owners and tract descriptions which have actually been consolidated. (Use reverse side of this form if necessary.) _____

No allowable will be assigned to the well until all interests have been consolidated (by communitization, unitization, forced-pooling, or otherwise) or until a non-standard unit, eliminating such interests, has been approved by the Commission.



CERTIFICATION

I hereby certify that the information contained herein is true and complete to the best of my knowledge and belief.

Name
Carl A. Schellinger

Position
Agent

Company
Read & Stevens, Inc.

Date
November 27, 1972

RECEIVED
 NOV 29 1972
 U.S. GEOLOGICAL SURVEY
 ARTESIA, NEW MEXICO

Date Surveyed
NOVEMBER 24, 1972

Registered Professional Engineer and/or Land Surveyor

John W. West
 Certificate No. **676**