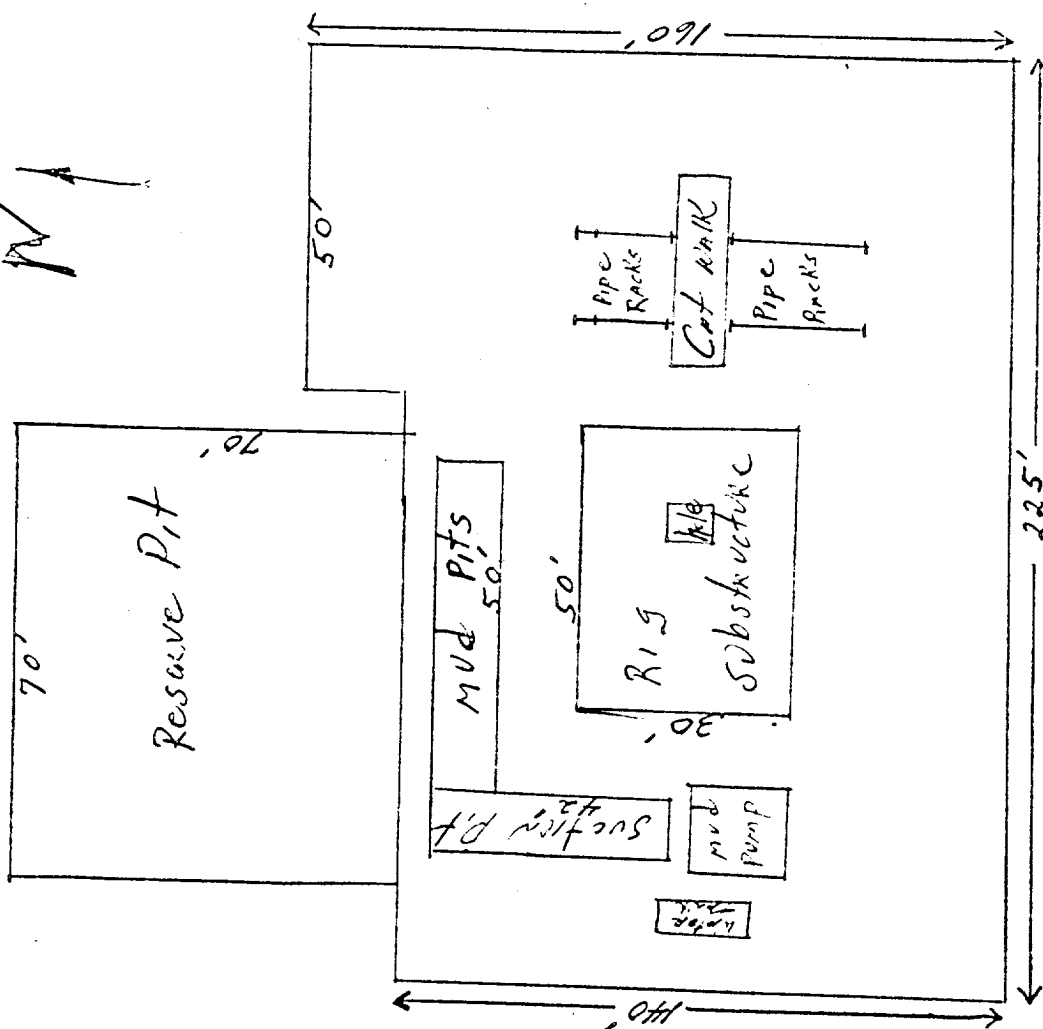


WEK Drilling Co. Inc.  
 -Rig No. 2  
 Rig & Rig components  
 Plat for location



RECEIVED

MAY 23 1973

U. S. GEOLOGICAL SURVEY  
 ARTESIA, NEW MEXICO

This rig is equipped with a Shaffer LWS Series 900 Double BOP Hydraulic operated. With blanks, 4", 4½" and side connections, w/Series 900 Hydril hydraulic operated BOP.