

UNITED STATES  
DEPARTMENT OF THE INTERIOR  
GEOLOGICAL SURVEY

30-ccs-60288

## APPLICATION FOR PERMIT TO DRILL, DEEPEN, OR PLUG BACK

## 1a. TYPE OF WORK

DRILL ☒DEEPEN ☐PLUG BACK ☐

## b. TYPE OF WELL

OIL  
WELL ☒GAS  
WELL ☐

OTHER

SINGLE  
ZONE ☐MULTIPLE  
ZONE ☐

## 2. NAME OF OPERATOR

McClellan Oil Corporation

## 3. ADDRESS OF OPERATOR

P. O. Box 848, Roswell, New Mexico 88201

## 4. LOCATION OF WELL (Report location clearly and in accordance with any State requirements.)\*

At surface

At proposed prod. zone

660 FSL &amp; 660 FEL

## 14. DISTANCE IN MILES AND DIRECTION FROM NEAREST TOWN OR POST OFFICE\*

20 miles north Loco Hills

## 15. DISTANCE FROM PROPOSED\*

LOCATION TO NEAREST  
PROPERTY OR LEASE LINE, FT.  
(Also to nearest drlg. unit line, if any)

## 18. DISTANCE FROM PROPOSED LOCATION\*

TO NEAREST WELL, DRILLING, COMPLETED,  
OR APPLIED FOR, ON THIS LEASE, FT.

## 16. NO. OF ACRES IN LEASE

480

## 19. PROPOSED DEPTH

1900'

17. NO. OF ACRES ASSIGNED  
TO THIS WELL

40

## 20. ROTARY OR CABLE TOOLS

Cable tools

## 21. ELEVATIONS (Show whether DF, RT, GR, etc.)

## 22. APPROX. DATE WORK WILL START\*

## 23.

## PROPOSED CASING AND CEMENTING PROGRAM

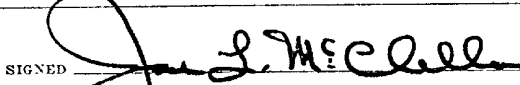
SIZE OF HOLE	SIZE OF CASING	WEIGHT PER FOOT	SETTING DEPTH	QUANTITY OF CEMENT
10-1/4"	8-5/8"	20 lb.	250'	*Set
8"	5-1/2"	15-1/2 lb.	1900'	150 sx

Will drill to a depth to test the Queen and Penrose sands. \*If no surface water is encountered will run 8-5/8", but not cement. If surface water is encountered will circulate cement. In the event production is discovered in the Queen or Penrose sand and 8-5/8" has not been completed, will run 1" tubing and cement 8-5/8" to surface.

IN ABOVE SPACE DESCRIBE PROPOSED PROGRAM: If proposal is to deepen or plug back, give data on present productive zone and proposed new productive zone. If proposal is to drill or deepen directionally, give pertinent data on subsurface locations and measured and true vertical depths. Give blowout preventer program, if any.

## 24.

SIGNED



TITLE

Operator

DATE 12/11/73

(This space for Federal or State office use)

PERMIT NO.

APPROVAL DATE

DEC 21 1973

DISTRICT ENGINEER

APPROVED BY

CONDITIONS OF APPROVAL, IF ANY:

TITLE

DATE

\*See Instructions On Reverse Side

RECEIVED  
DEC 17 1973  
U.S. GEOLOGICAL SURVEY  
ARTESIA, NEW MEXICO

THIS APPROVAL IS RESCINDED IF OPERATIONS  
ARE NOT COMPLETED WITHIN 2 MONTHS.

**NEW MEXICO OIL CONSERVATION COMMISSION  
WELL LOCATION AND ACREAGE DEDICATION PLAT**

Form C-102  
Supersedes C-128  
Effective 1-1-65

All distances must be from the outer boundaries of the Section

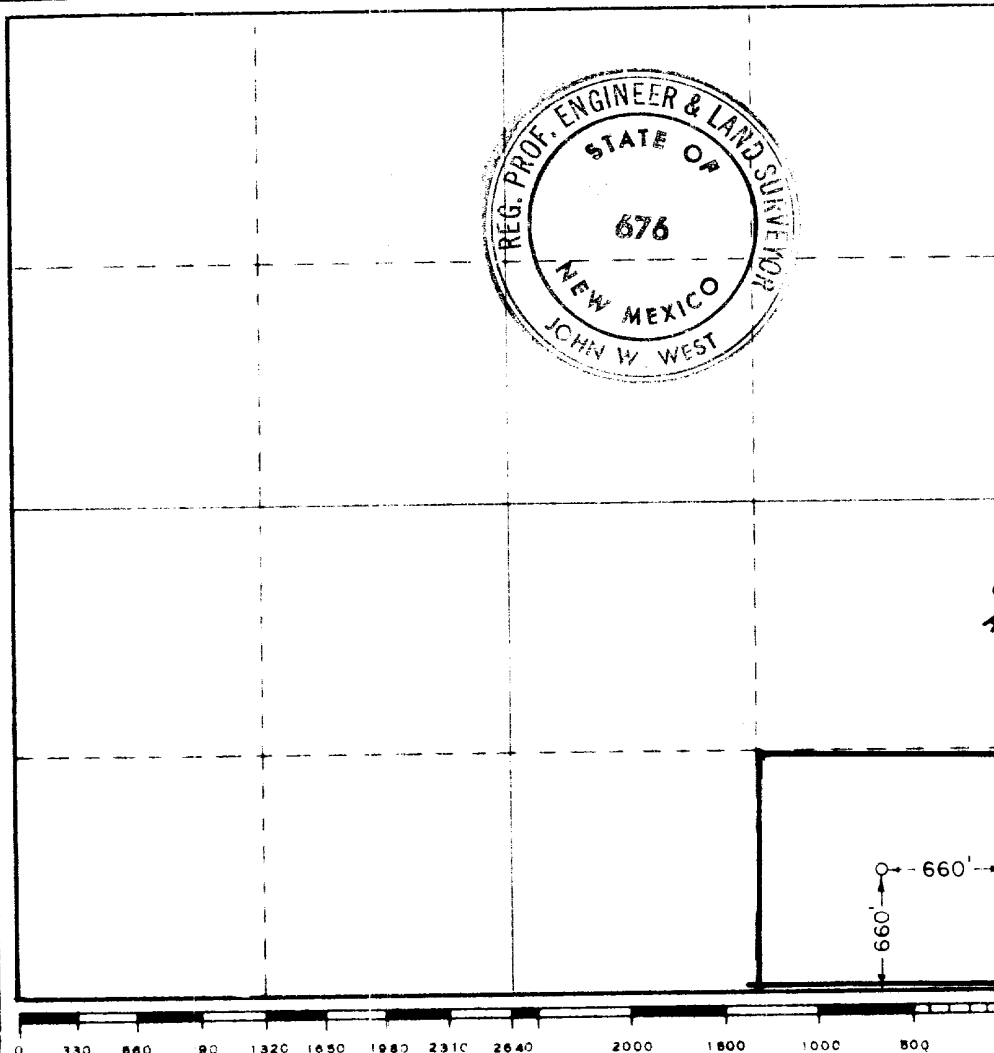
Operator <b>McCLELLAN OIL CORP.</b>			Lease <b>FEDERAL 7</b>		Well No. <b>1</b>
Tract Letter <b>P</b>	Section <b>7</b>	Township <b>15 SOUTH</b>	Range <b>29 EAST</b>	County <b>CHAVES</b>	
Actual Portage Location of Well. <b>660</b> feet from the <b>SOUTH</b> line and <b>660</b> feet from the <b>EAST</b> line.					
Ground Level Elev.	Producing Formation <b>QUEEN</b>		Pool <b>WILDCAT</b>	Estimated Acreage: <b>40</b> Acres	

- Outline the acreage dedicated to the subject well by colored pencil or hatchure marks on the plat below.
- If more than one lease is dedicated to the well, outline each and identify the ownership thereof (both as to working interest and royalty).
- If more than one lease of different ownership is dedicated to the well, have the interests of all owners been consolidated by communitization, unitization, force-pooling, etc?

☐ Yes ☐ No If answer is "yes," type of consolidation \_\_\_\_\_

If answer is "no," list the owners and tract descriptions which have actually been consolidated. (Use reverse side of this form if necessary.) \_\_\_\_\_

No allowable will be assigned to the well until all interests have been consolidated (by communitization, unitization, forced-pooling, or otherwise) or until a non-standard unit, eliminating such interests, has been approved by the Commission.



**CERTIFICATION**

I hereby certify that the information contained herein is true and complete to the best of my knowledge and belief.

*John J. McClellan*  
Name \_\_\_\_\_  
Position **President**  
Company **McClellan Oil Corp**  
Date **12/12/63**

**RECEIVED**  
DEC 17 1963  
U.S. GEOLOGICAL SURVEY  
ARTESIA, NEW MEXICO

I hereby certify that the well location shown on this plat was plotted from field notes of actual surveys made by me or under my supervision and that the same are correct to the best of my knowledge and belief.

Date Surveyed  
**December 11, 1973**  
Registered Professional Engineer and/or Land Surveyor  
*John W. West*  
Certificate No. **676**

JMC

J. MCLELLAN OIL CORPORATION  
Box 849  
ROSWELL, NEW MEXICO 88201

