

UNITED STATES  
DEPARTMENT OF THE INTERIOR  
GEOLOGICAL SURVEY

## APPLICATION FOR PERMIT TO DRILL, DEEPEN, OR PLUG BACK

1a. TYPE OF WORK  
DRILL ☒ DEEPEN ☐ PLUG BACK ☐

b. TYPE OF WELL  
OIL WELL ☐ GAS WELL ☒ OTHER ☐ SINGLE ZONE ☒ MULTIPLE ZONE ☐

2. NAME OF OPERATOR  
Jack J. Grynberg

3. ADDRESS OF OPERATOR  
1050-17th Street- Suite 1950, Denver, CO 80202

4. LOCATION OF WELL (Report location clearly and in accordance with any State requirements.)  
At surface 2310 FWL 2310 FSL (NE SW)  
Sec. 21 T 15 S - R 29 E  
At proposed prod. zone  
As Above

14. DISTANCE IN MILES AND DIRECTION FROM NEAREST TOWN OR POST OFFICE\*  
Approx. 25 miles northeast of Artesia, N.M.

15. DISTANCE FROM PROPOSED\* LOCATION TO NEAREST PROPERTY OR LEASE LINE, FT. (Also to nearest drlg. unit line, if any)  
330'

16. NO. OF ACRES, ARTESIA, OFFICE OF ACRES ASSIGNED TO THIS WELL  
1240

18. DISTANCE FROM PROPOSED LOCATION\* TO NEAREST WELL, DRILLING, COMPLETED, OR APPLIED FOR, ON THIS LEASE, FT.  
None

19. PROPOSED DEPTH  
1850

20. ROTARY OR CABLE TOOLS  
Rotary

21. ELEVATIONS (Show whether DF, RT, GR, etc.)  
3815 est. Ground (See attached survey)

22. APPROX. DATE WORK WILL START\*  
January 30, 1974

## PROPOSED CASING AND CEMENTING PROGRAM

SIZE OF HOLE	SIZE OF CASING	WEIGHT PER FOOT	SETTING DEPTH	QUANTITY OF CEMENT
12 1/4	8 5/8	24#	260	150 sx (est.) circ.
7 7/8	4 1/2	9.5	1850	300 sx (est.)

Proposed program is to drill to an estimated total depth of 1850 feet in the Queen formation. All substantial shows will be tested, and E-logs will be run. If commercial production is indicated, casing will be run, and a completion will be attempted.

Rotary tools will be equipped with adequate blowout preventers. This equipment will be pretested prior to drilling and tested daily with results recorded.

RECEIVED  
JAN 28 1974  
U. S. GEOLOGICAL SURVEY  
ARTESIA, NEW MEXICO

IN ABOVE SPACE DESCRIBE PROPOSED PROGRAM: If proposal is to deepen or plug back, give data on present productive zone and proposed new productive zone. If proposal is to drill or deepen directionally, give pertinent data on subsurface locations and measured and true vertical depths. Give blowout preventer program, if any.

24. SIGNED Cecil D. Gritz TITLE Petroleum Engineer DATE 1/26/74  
(This space for Federal or State office use)

PERMIT NO. \_\_\_\_\_ APPROVAL DATE JAN 30 1974

APPROVED BY [Signature] TITLE DISTRICT ENGINEER DATE \_\_\_\_\_

CONDITIONS OF APPROVAL, IF ANY:

THIS APPROVAL IS RESCINDED IF OPERATIONS  
ARE NOT COMMENCED WITHIN 2 MONTHS  
by 1-31-74

\*See Instructions On Reverse Side

NE - EXICO OIL CONSERVATION COMMISSION  
WELL LOCATION AND ACREAGE DEDICATION PLAT

Form C-102  
Supersedes C-128  
Effective 1-1-65

All distances must be from the outer boundaries of the Section.

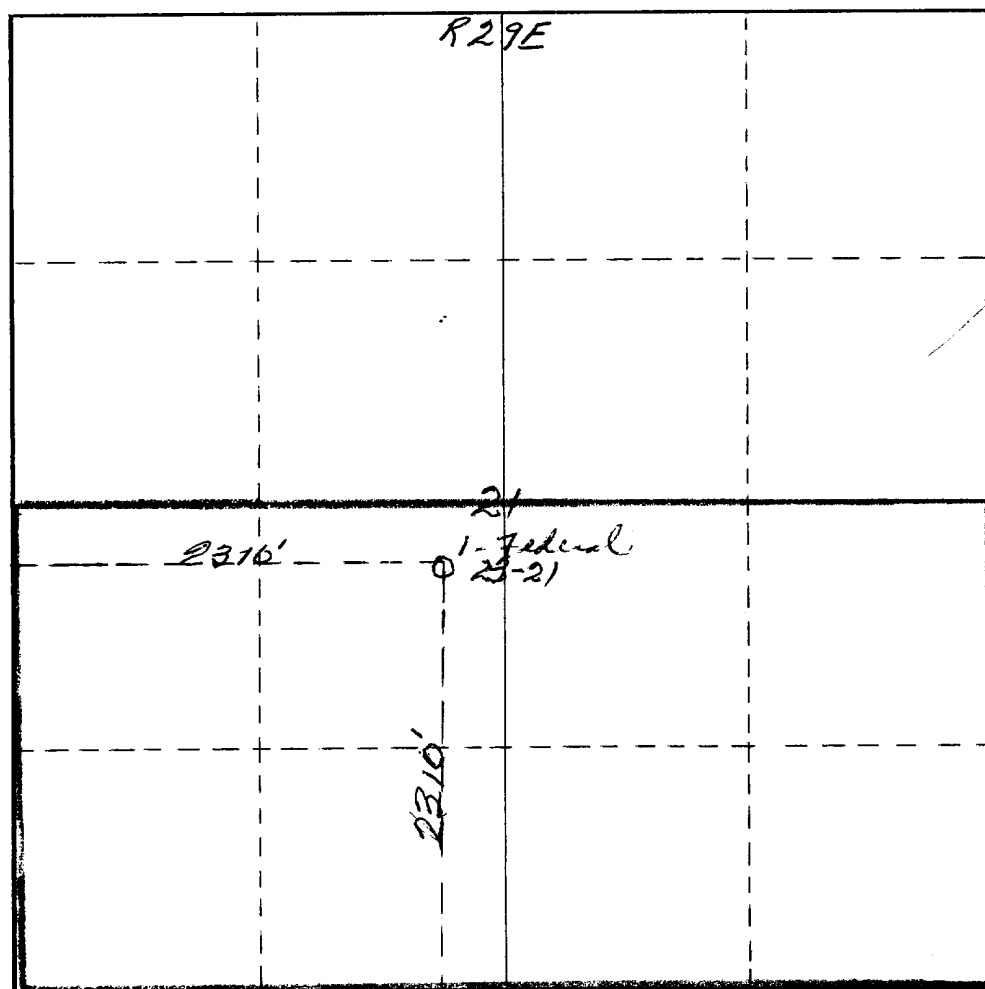
Operator <i>Jack Grynberg &amp; Associates</i>			Lease <i>Federal "A"</i>		Well No. <i>23-21</i>
Unit Letter <i>K</i>	Section <i>21</i>	Township <i>15 South</i>	Range <i>29 East</i>	County <i>Chaves</i>	
Actual Footage Location of Well: <i>2310</i> feet from the <i>South</i> line and <i>2310</i> feet from the <i>West</i> line					
Ground Level Elev. <i>3804</i>	Producing Formation <i>Queen</i>		Pool <i>Unit Queen</i>	Dedicated Acreage: <i>4001.320</i> Acres	

1. Outline the acreage dedicated to the subject well by colored pencil or hachure marks on the plat below.
2. If more than one lease is dedicated to the well, outline each and identify the ownership thereof (both as to working interest and royalty).
3. If more than one lease of different ownership is dedicated to the well, have the interests of all owners been consolidated by communitization, unitization, force-pooling, etc?

☐ Yes ☐ No If answer is "yes," type of consolidation \_\_\_\_\_

If answer is "no," list the owners and tract descriptions which have actually been consolidated. (Use reverse side of this form if necessary.) \_\_\_\_\_

No allowable will be assigned to the well until all interests have been consolidated (by communitization, unitization, forced-pooling, or otherwise) or until a non-standard unit, eliminating such interests, has been approved by the Commission.



CERTIFICATION

I hereby certify that the information contained herein is true and complete to the best of my knowledge and belief.

Name  
*Jack M. Grynberg*  
Position  
*Reg. Professional Engineer*  
Company  
*Mineral Mgmt.*  
Date  
*1-28-74*

I hereby certify that the well location shown on this plat was plotted from field notes of actual surveys made by me or under my supervision, and that the same is true and correct to the best of my knowledge and belief.

Date Surveyed  
*January 26th 1974*  
Registered Professional Engineer and/or Land Surveyor  
*James H. Brown*  
Certificate No.  
*542*

Jack J. Grynberg  
Federal #23-21, Round Tank Queen  
Chaves County, New Mexico

LESSEE'S DEVELOPMENT PLAN FOR SURFACE USE

(For U. S. Geological Survey)

ITEM 1: EXISTING ROADS AND LOCATION OF MAIN HIGHWAY EXIT

The main highway exit is located approximately 22 miles east of Artesia, New Mexico on Highway 82. From this point a road leads north to the Round Tank area. Existing roads will be used where appropriate and only when approved by all parties concerned.

ITEM 2: PLANNED ACCESS ROADS

We plan to grade and maintain an access road leading on to the location. This road will be intended to support only the necessary vehicular traffic needed to support and conduct drilling operations.

ITEM 3: LOCATION OF WELL

2310' FWL 2310' FSL  
NESW Sec 21 T 15 S - R 29 E, Chaves County, New Mexico

**RECEIVED**  
JAN 28 1974  
U. S. GEOLOGICAL SURVEY  
ARTESIA, NEW MEXICO

ITEM 4: LATERAL ROADS TO WELL LOCATION

Existing lateral roads will be used only when and where approved by the BLM. Use of these roads will be restricted to the routes discussed during on-site inspection of the proposed project.

ITEM 5: LOCATION OF TANK BATTERIES AND FLOW LINES - Tank battery, if required, will be constructed on the drilling location as approved by all parties concerned before ~~No tank battery will be required.~~ Flow lines, if any, will follow installation right-of-way approved by Bureau of Land Management at a later date.

ITEM 6: LOCATION AND TYPE OF WATER SUPPLY

To be determined. This information will follow.

ITEM 7: WASTE DISPOSAL

Adequate deep burn pits for ordinary combustible trash, including protected and enclosed sumps for oil and other toxic wastes, if any. Burning of trash to be kept at a minimum.

ITEM 8: LOCATION OF CAMPS

None planned.

ITEM 9: LOCATION OF AIRSTRIPS

ITEM 10: LOCATION AND RIG LAYOUT

This information will follow when specific rig information is available.

ITEM 11: SURFACE RESTORATION

Location will be restored to original physical contour, replanted and/or reseeded to original type vegetation to prevent erosion.

ITEM 12: MISCELLANEOUS INFORMATION PERTINENT TO ENVIRONMENTAL IMPACT

All areas of pits, sumps, and other excavations will be fenced and flagged during and after operations until such time as they can be back-filled, levelled and replanted. Vehicular traffic will be restricted only to the approved access routes and used only when necessary.

**RECEIVED**  
JAN 28 1974  
U. S. GEOLOGICAL SURVEY  
ARTESIA, N. M.

OPERATORS DRILLING PLAN

(For U.S. Geological Survey)

1. Surface Casing

8-5/8" 24# 260' K-55 new

2. Casingheads, Flanges & Spools

10" 2000 psi WP 8-5/8" csg. head

10" 2000 psi WP csg spool

2000 psi WP flanges, valves, and flow tees

3. Intermediate Casing

None

4. Blowout Preventors

10" 900' 2000 psi Double Hyd

Necessary fill, kill, and choke lines to insure complete control and safety.

5. Auxiliary Equipment

- a. Kelly Cock
- b. Gas detector
- c. Stabbing Valve
- d. Additional items as needed

6. Maximum Expected Pressures

860 psi at TD  
\_\_\_\_\_ at \_\_\_\_\_

7. Drilling Fluid Type

Water base

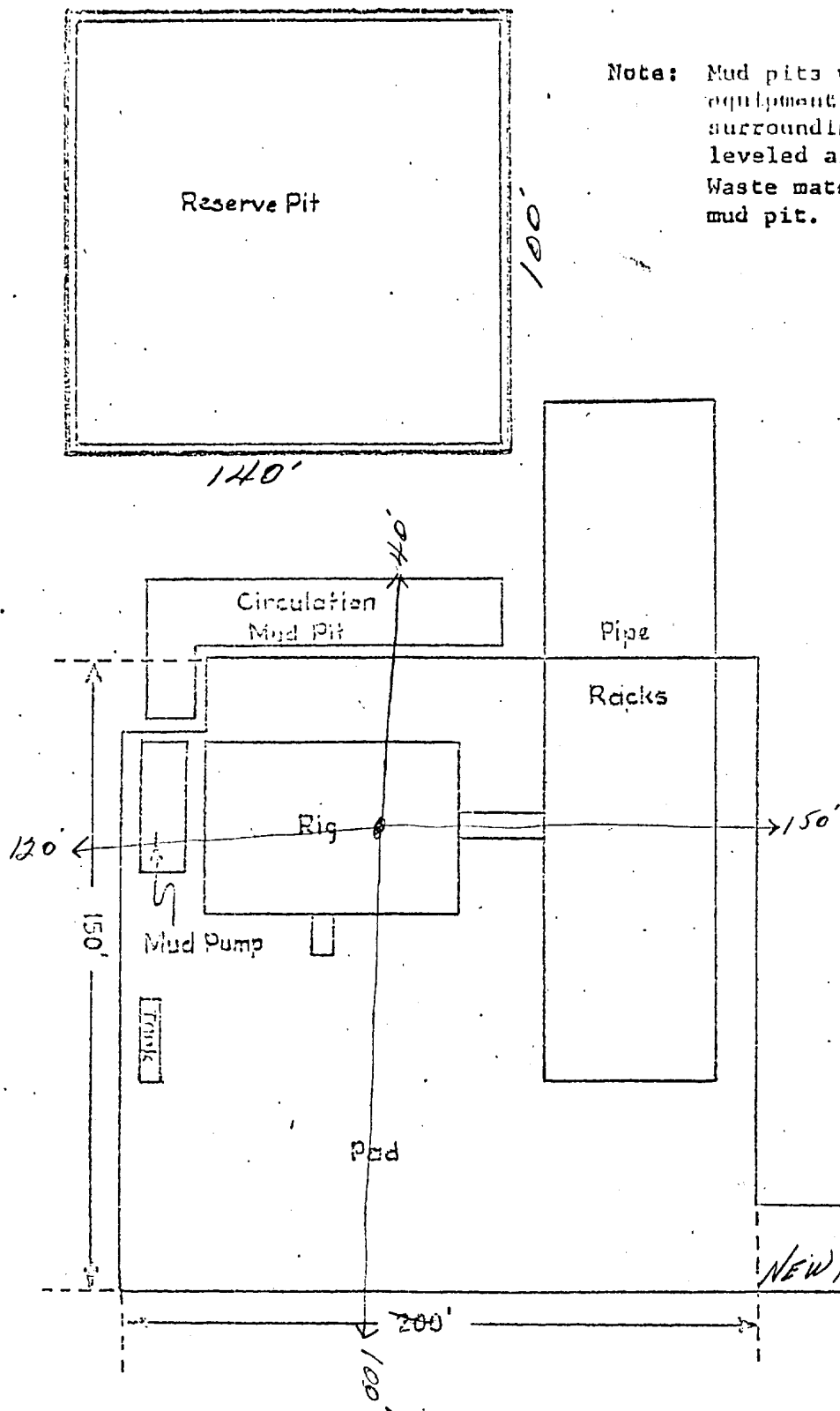
**RECEIVED**  
JAN 28 1974  
U. S. GEOLOGICAL SURVEY  
ARTESIA, NEW MEXICO

RECEIVED  
MAY 19 1964  
U.S. AIR FORCE  
OFFICE OF THE  
JOINT CHIEFS OF STAFF

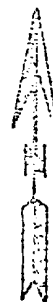
Schematic  
(Not Scaled)

~~Shelf, Unit Wells No. 110~~

N

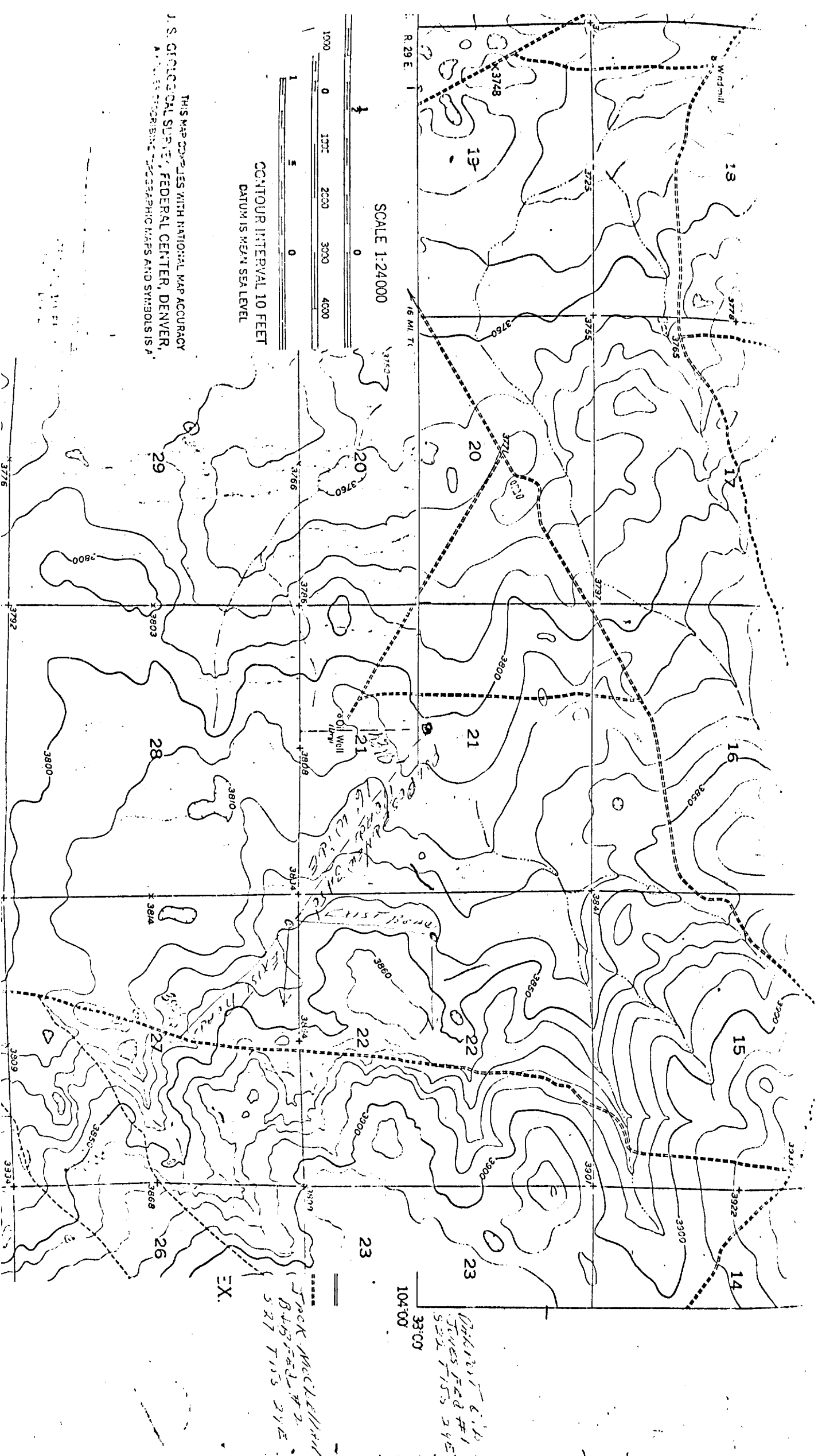


Note: Mud pits will be filled. Drilling equipment removed and surface surrounding the pad cleaned up and leveled after the well is completed. Waste material to be buried in the mud pit.



RECEIVED  
JAN 23 1974  
U. S. GEOLOGICAL SURVEY  
ARTESIA, NEW MEXICO

S





JERRY BUTTS

MANAGER

T. C. STROMBERG  
PRESIDENT

## THE ARTESIA LUMBER COMPANY

P. O. DRAWER 1325

Artesia, New Mexico 88210

January 26, 1974

Mr. Cecil Gritz  
Jack Grynberg & Associates  
1050 17th Street Suite 1950  
Denver, Colorado 80202

Dear Mr. Gritz:

I am submitting the following recommendations for a drilling mud program for your proposed Queen well Sec.21-15s-29e, Chaves County, New Mexico.

**SURFACE HOLE:** 0-300' Casing, 10 3/4" @ 300' Drill this interval with Gel-Lime slurry having sufficient viscosity to clean hole for casing.

**PRODUCTION HOLE:** 300'-1800' (appr.) 5 1/2" Casing @ TD Drill this hole with Brine, due to Salt section @ approx. 400', to within 100' of pay. At this depth I suggest mudding up with salt gel to have viscosity sufficient to clean hole. Addition of Starch may be desired if the operator wants some filtration control.

Note: If hole conditions warrant, drilling with brine is most economical; however should the hole get bad, I recommend mudding up as the hole demands.

Mr. Gritz, I believe that this well can be drilled with a minimum cost for mud if we have no trouble. I estimate mud cost to be :

SURFACE	Gel	40 sx	\$129.20
	Lime	5 sx	7.75
PRODUCTION HOLE	Salt Gel	60 sx	277.20
TOTAL COST-----			\$404.15

Thank you for considering Artesia Lumber Company. I am looking forward to working with you.

Respectfully,



Jerry D. Butts

