

UNITED STATES
DEPARTMENT OF THE INTERIOR
GEOLOGICAL SURVEY

APPLICATION FOR PERMIT TO DRILL, DEEPEN, OR PLUG BACK

1a. TYPE OF WORK

DRILL ☒DEEPEN ☐PLUG BACK ☐

b. TYPE OF WELL

OIL

WELL ☒

GAS

WELL ☐

OTHER

SINGLE

ZONE ☐

MULTIPLE

ZONE ☐

2. NAME OF OPERATOR

McClellan Oil Corporation

3. ADDRESS OF OPERATOR

P. O. Box 848, Roswell, New Mexico 88201

4. LOCATION OF WELL (Report location clearly and in accordance with any State requirements.)

At surface

At proposed prod. zone 660 FNL & 660 FWL

14. DISTANCE IN MILES AND DIRECTION FROM NEAREST TOWN OR POST OFFICE*

20 miles North of Loco Hills

15. DISTANCE FROM PROPOSED*

LOCATION TO NEAREST

PROPERTY OR LEASE LINE, FT.

(Also to nearest drlg. unit line, if any)

18. DISTANCE FROM PROPOSED LOCATION*

TO NEAREST WELL, DRILLING, COMPLETED,

OR APPLIED FOR, ON THIS LEASE, FT.

16. NO. OF ACRES IN LEASE

850

17. NO. OF ACRES ASSIGNED

TO THIS WELL

40

19. PROPOSED DEPTH

1900'

20. ROTARY OR CABLE TOOLS

Cable Tools

21. ELEVATIONS (Show whether DF, RT, GR, etc.)

3716.9 G. L.

22. APPROX. DATE WORK WILL START*

2/25/74

23.

PROPOSED CASING AND CEMENTING PROGRAM

SIZE OF HOLE	SIZE OF CASING	WEIGHT PER FOOT	SETTING DEPTH	QUANTITY OF CEMENT
10-1/4"	8-5/8"	20 lb.	350	*Set
8"	5-1/2"	15-1/2 lb.	1900	100 sx

Will drill to approximately 1900' to test the Queen Sand. If production is indicated, will run casing and attempt completion.

Cortez Drilling Company, Roswell, New Mexico will be the drilling contractor.

* If no water is encountered will not cement casing. If production is obtained, will cement 8-5/8" csg. with 2" tubing.

IN ABOVE SPACE DESCRIBE PROPOSED PROGRAM: If proposal is to deepen or plug back, give data on present productive zone and proposed productive zone. If proposal is to drill or deepen directionally, give pertinent data on subsurface locations and measured and true vertical depths. Give blowout preventer program, if any.

24.

SIGNED

TITLE President

DATE 2/13/74

(This space for Federal or State office use)

PERMIT NO.

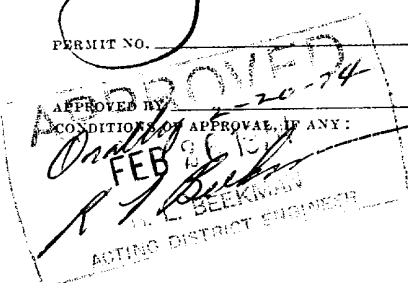
APPROVAL OPERATIONS

THIS APPROVAL IS RESCINDED IF
ARE NOT COMMENCED WITHIN 3 MONTHS.
EXPIRES MAY 26 1974

DATE

*See Instructions On Reverse Side

RECEIVED
FEB 14 1974
U. S. GEOLOGICAL SURVEY
ARTESIA, NEW MEXICO



NEW MEXICO OIL CONSERVATION COMMISSION
WELL LOCATION AND ACREAGE DEDICATION PLAT

Form C-102
Supersedes C-128
Effective 1-1-65

All distances must be from the outer boundaries of the Section

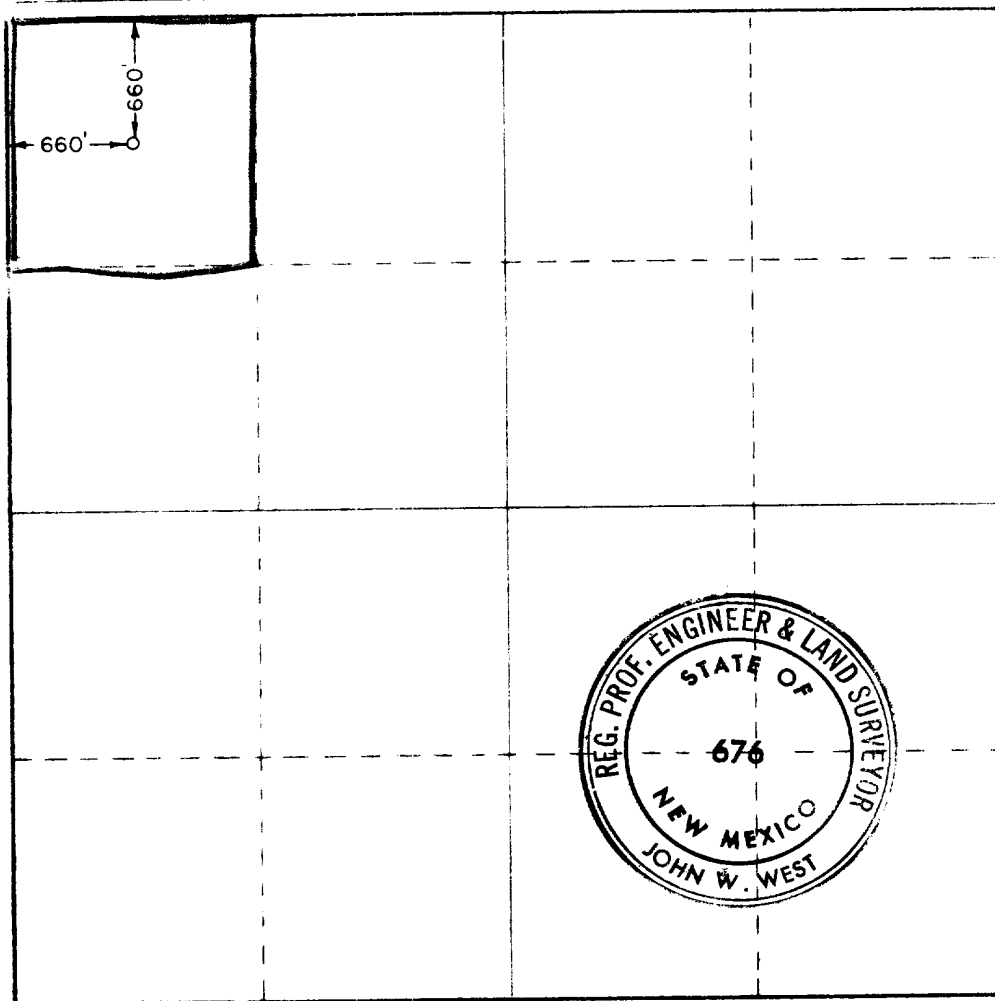
Operator McCLELLAN OIL CORPORATION		Lease MARK FEDERAL		Well No. 12
Unit Letter D	Section 5	Township 15 SOUTH	Range 29 EAST	County CHAVES
Actual Footage Location of Well: 660 feet from the NORTH line and 660 feet from the WEST line				
Ground Level Elev. 3716.9	Producing Formation Queen Sand	Pool Wildcat	Dedicated Acreage: 40 Acres	

1. Outline the acreage dedicated to the subject well by colored pencil or hatchure marks on the plat below.
2. If more than one lease is dedicated to the well, outline each and identify the ownership thereof (both as to working interest and royalty).
3. If more than one lease of different ownership is dedicated to the well, have the interests of all owners been consolidated by communitization, unitization, force-pooling, etc?

☐ Yes ☐ No If answer is "yes," type of consolidation _____

If answer is "no," list the owners and tract descriptions which have actually been consolidated. (Use reverse side of this form if necessary.) _____

No allowable will be assigned to the well until all interests have been consolidated (by communitization, unitization, forced-pooling, or otherwise) or until a non-standard unit, eliminating such interests, has been approved by the Commission.



CERTIFICATION

I hereby certify that the information contained herein is true and complete to the best of my knowledge and belief.

John J. McClellan
President

McClellan Oil Corporation

February 13, 1974

Date

RECEIVED
FEB 14 1974

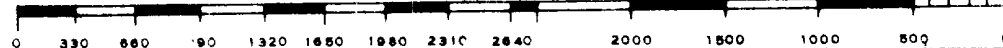
I hereby certify that the information shown on this plat was plotted from field notes of actual survey made by me or under my supervision, and that the same is true and correct to the best of my knowledge and belief.

Date Surveyed

FEBRUARY 7, 1974

Registered Professional Engineer
and/or Land Surveyor

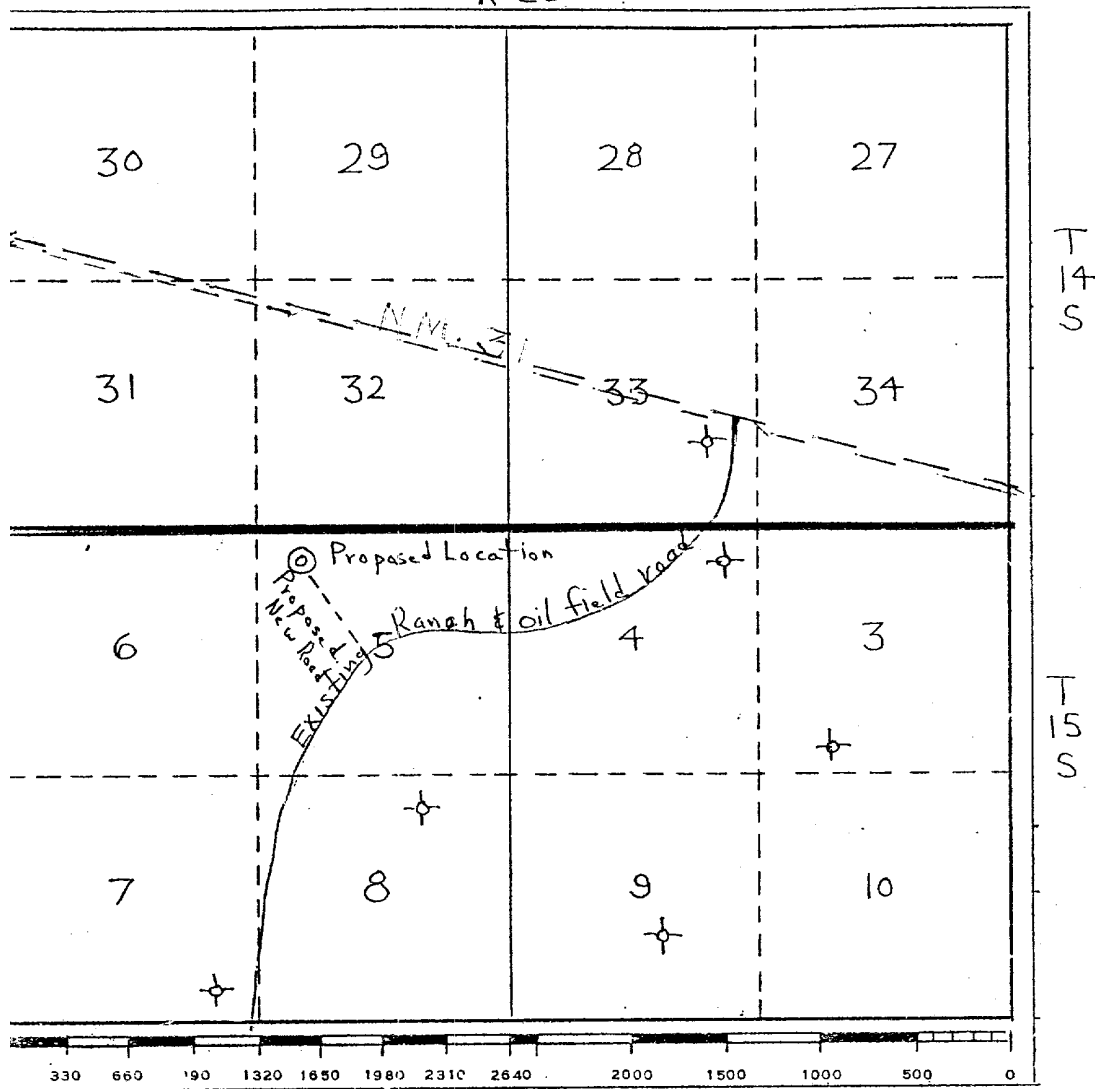
John W. West
Certificate No. **676**



JME

COLELLAN OIL CORPORATION
Box 848
ROSWELL, NEW MEXICO 88201

R-29-E



RECEIVED

FEB 14 1974

U. S. GEOLOGICAL SURVEY
ARTESIA, NEW MEXICO

Propose to use existing roads, oilfield and ranch, and to construct approximately 1900' of new road to location. No water exists in this area and will have to be trucked in to location. Combustible material will be burned, noncombustible material will be buried with pit filling. After completion or abandonment, the pit will be filled, the location cleaned, and the area restored, as much as possible, to it's original state.

