

30-005-60303

UNITED STATES
DEPARTMENT OF THE INTERIOR

GEOLOGICAL SURVEY

APPLICATION FOR PERMIT TO DRILL, DEEPEN, OR PLUG BACK

1a. TYPE OF WORK

DRILL ☒DEEPEN ☐PLUG BACK ☐

b. TYPE OF WELL

OIL
WELL ☒GAS
WELL ☐

OTHER

SINGLE
ZONE ☒MULTIPLE
ZONE ☐

2. NAME OF OPERATOR

Yates Petroleum Corporation ✓

3. ADDRESS OF OPERATOR

207 South 4th Street - Artesia, NM 88210

4. LOCATION OF WELL (Report location clearly and in accordance with any State requirements.)*

At surface

1980' FNL & 330' FWL of Sec. 27-15S-29E

At proposed prod. zone

14. DISTANCE IN MILES AND DIRECTION FROM NEAREST TOWN OR POST OFFICE*

13 miles NW of Loco Hills, New Mexico

15. DISTANCE FROM PROPOSED*

LOCATION TO NEAREST
PROPERTY OR LEASE LINE, FT.
(Also to nearest drlg. unit line, if any)

330

16. NO. OF ACRES IN LEASE

80

17. NO. OF ACRES ASSIGNED
TO THIS WELL

40

18. DISTANCE FROM PROPOSED LOCATION*
TO NEAREST WELL, DRILLING, COMPLETED,
OR APPLIED FOR, ON THIS LEASE, FT.

19. PROPOSED DEPTH

Approx. 1850'

20. ROTARY OR CABLE TOOLS

Cable Tools

21. ELEVATIONS (Show whether DF, RT, GR, etc.)

3809' GR

22. APPROX. DATE WORK WILL START*

April 9, 1974

23.

PROPOSED CASING AND CEMENTING PROGRAM

SIZE OF HOLE	SIZE OF CASING	WEIGHT PER FOOT	SETTING DEPTH	QUANTITY OF CEMENT
11"	8-5/8"	24#	260'	150 sx
8"	5½ or 4½"	15.5 or 9.5#	1850'	150 sx or 200 sx

Propose to drill Queen test. 8-5/8" casing will be set in top of salt section and cemented to surface. If commercial will run 5½ or 4½" casing and cemented with 600 feet of cement above pay. Well will be acidized and sand frac'd as needed.

Mud Program: Cable tool hole, will mud up as expedient if needed.

BOP Program: Flow tee, nipple and valve to be installed prior to drilling into Queen formation

RECEIVED

APR 3 - 1974

IN ABOVE SPACE DESCRIBE PROPOSED PROGRAM: If proposal is to deepen or plug back, give data on present productive zone and proposed new productive zone. If proposal is to drill or deepen directionally, give pertinent data on location, depth and measured and true vertical depths. Give blowout preventer program, if any.

24.

SIGNED

Eddie L. Meloy

TITLE

Engineer

DATE 3-21-74

(This space for Federal or State office use)

PERMIT NO.

APPROVAL DATE

APPROVED BY
APR 1 - 1974
CONDITIONS OF APPROVAL, IF ANY:
J. L. BEERMAN

DATE

THIS APPROVAL IS RESCINDED IF OPERATIONS
ARE NOT COMMENCED WITHIN 3 MONTHS.
EXPIRES JUL 1 - 1974
*See Instructions On Reverse Side

NEW MEXICO OIL CONSERVATION COMMISSION
WELL LOCATION AND ACREAGE DEDICATION PLAT

Form C-102
Supersedes C-128
Effective 1-1-65

All distances must be from the outer boundaries of the Section.

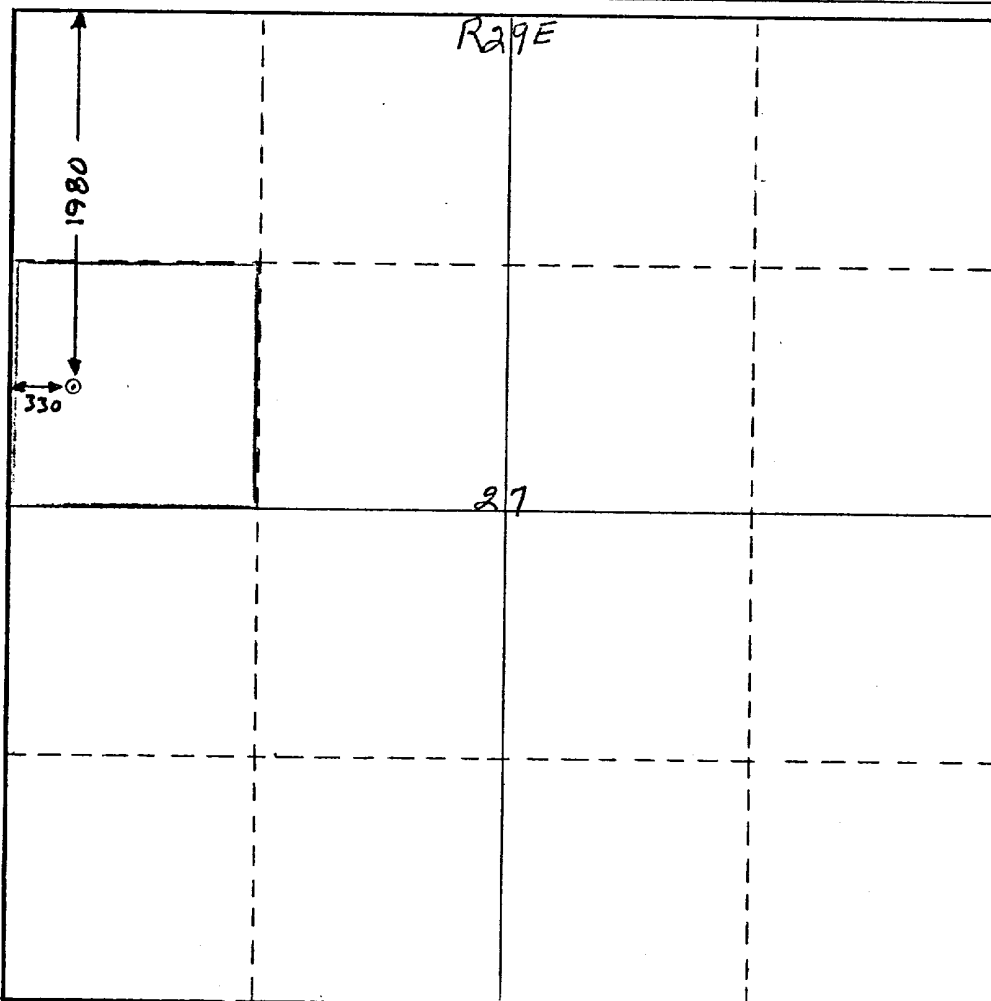
Operator Yates Petroleum Corporation			Lease Federal "DH"		Well No. 1
Unit Letter E	Section 27	Township 15S	Range 29E	County Chaves	
Actual Elevation of Well 1980 feet from the North line and 330 feet from the West line					
Ground Level Elev. 3809'	Producing Formation Queen		Pool Lucky Lake South Queen		Dedicated Acreage: 40 Acres

1. Outline the acreage dedicated to the subject well by colored pencil or hachure marks on the plat below.
2. If more than one lease is dedicated to the well, outline each and identify the ownership thereof (both as to working interest and royalty).
3. If more than one lease of different ownership is dedicated to the well, have the interests of all owners been consolidated by communitization, unitization, force-pooling, etc?

☐ Yes ☐ No If answer is "yes," type of consolidation _____

If answer is "no," list the owners and tract descriptions which have actually been consolidated. (Use reverse side of this form if necessary.) _____

No allowable will be assigned to the well until all interests have been consolidated (by communitization, unitization, forced-pooling, or otherwise) or until a non-standard unit, eliminating such interests, has been approved by the Commission.



CERTIFICATION

I hereby certify that the information contained herein is true and complete to the best of my knowledge and belief.

Name
Eddie M. Mahfood
Position
Engineer
Company
Yates Pet. Corp.

Date
3-20-74

I hereby certify that the well location shown on this plat was made by me or under my supervision, and that the same is true to the best of my knowledge and belief.

Date Surveyed
March 20th 1974
Registered Professional Engineer
and/or Land Surveyor

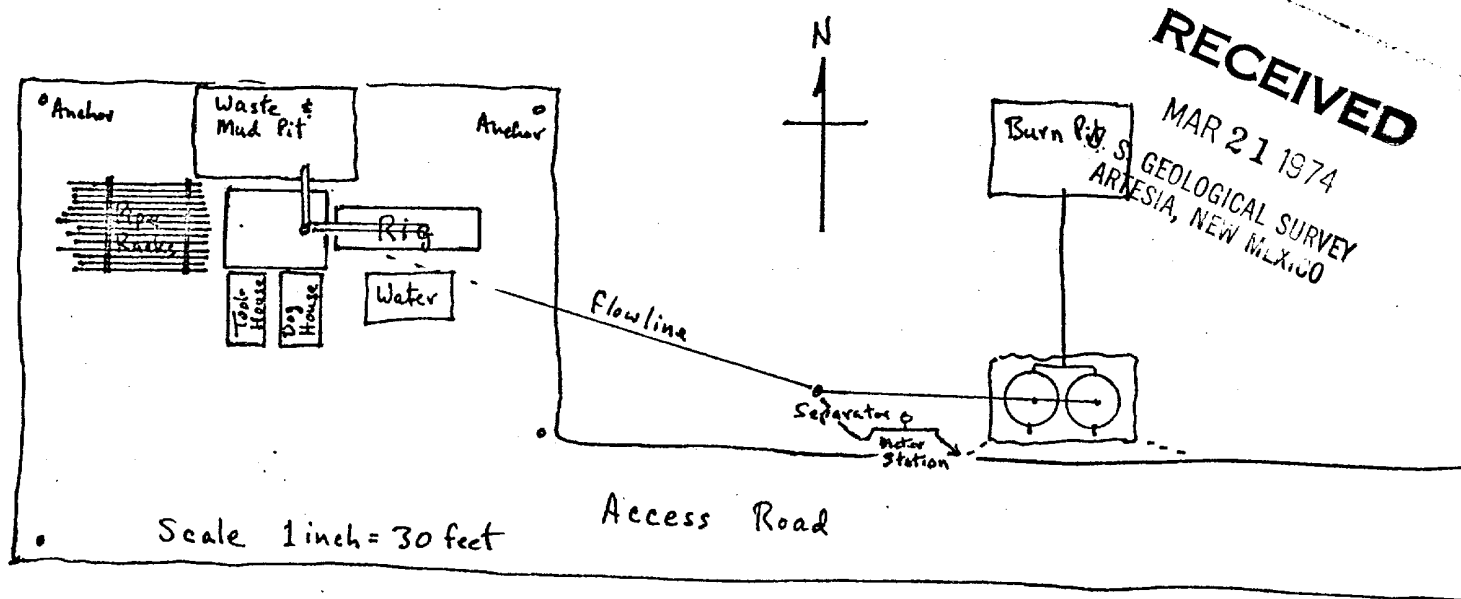
Certificate No.

542

0 330 660 990 1320 1650 1980 2310 2640 2970 3300 3630 3960 4290 4620 4950 5280 5610 5940 6270 6600

Development plan for surface use to accompany, "Applications to Drill Onshore Oil, Gas, or Geothermal Steam Wells on Public Domain and acquired Federal Lands:"

1. Existing roads. See attached Topo Map - County maintained roads
2. Planned access roads. See attached Topo Map - To blade road west from existing road, approx. 1 foot cut from sandstone high to fill location
3. Location of wells. See attached Topo Map. South stepout to Lucky Lake So. (Queen) Pool Chaves County.
4. Lateral roads to wells locations. First well on lease, existing roads to be utilized.
5. Location of tank batteries and flowlines. See attached Topo Map.
6. Locations and types of water supply. Fresh water trucked from Loco Hills.
7. Methods for handling waste disposal. Engine oil, cuttings, mud & trash disposal of in waste pit - See attached Map.
8. Location of camps. NA
9. Location of airstrips. NA
10. Location layout to include position of the rig, mud tanks, reserve pits, burn pits, pipe racks, etc. See sketch below.
11. Plans for restoration of the surface. Waste pit will be dried & leveled and surface restored near to original. Burn pit & tank batt. built if
12. Any other information which the Approving Official producer, fenced considers essential to his assessment of the impact on the environment. Rolling terrain, sandstone & redbeds; good drainage thru interspersed sand-drifts with some desert grass, greasewood, thistle and cacti. A minimum disturbance coming off of bluff.



SUBMITTED BY
YATES PETROLEUM CORPORATION

Eddie M. Mahfood
Eddie M. Mahfood

