

UNITED STATES  
DEPARTMENT OF THE INTERIOR  
GEOLOGICAL SURVEY(Other instr. as on  
reverse)

30-005-6030.5

## APPLICATION FOR PERMIT TO DRILL, DEEPEN, OR PLUG BACK

## 1a. TYPE OF WORK

DRILL ☒DEEPEN ☐PLUG BACK ☐

## b. TYPE OF WELL

OIL ☒GAS ☐

OTHER

SINGLE ☐MULTIPLE ☐

## 2. NAME OF OPERATOR

McCLELLAN OIL CORPORATION ✓

## 3. ADDRESS OF OPERATOR

POST OFFICE Box 848, ROSWELL, NEW MEXICO 88201

## 4. LOCATION OF WELL (Report location clearly and in accordance with any State requirement.)

At surface

990' FSL &amp; 1650' FEL

At proposed prod. zone

MAY 21 1974

## 14. DISTANCE IN MILES AND DIRECTION FROM NEAREST TOWN OR POST OFFICE\*

18 MILES NORTH OF LOCO HILLS

O. C. C.

## 15. DISTANCE FROM PROPOSED\*

LOCATION TO NEAREST  
PROPERTY OR LEASE LINE, FT.  
(Also to nearest drlg. unit line, if any)

990'

## 16. NO. OF ACRES BASED ON OFFICE

285.38

NO. OF ACRES ASSIGNED  
TO THIS WELL

40

## 18. DISTANCE FROM PROPOSED LOCATION\*

TO NEAREST WELL, DRILLING, COMPLETED,  
OR APPLIED FOR, ON THIS LEASE, FT.

660'

## 19. PROPOSED DEPTH

2050'

## 20. ROTARY OR CABLE TOOLS

CABLE TOOLS

## 21. ELEVATIONS (Show whether DF, RT, GR, etc.)

## 22. APPROX. DATE WORK WILL START\*

MAY 15, 1974

## 23.

## PROPOSED CASING AND CEMENTING PROGRAM

SIZE OF HOLE	SIZE OF CASING	WEIGHT PER FOOT	SETTING DEPTH	QUANTITY OF CEMENT
*12"	8-5/8"	20#	425'	100 SX (CIRC)*
8"	5-1/2"	12#	2050'	100 SX

PROPOSE TO DRILL TO 2050' TO TEST THE QUEEN SAND. IF PRODUCTION IS

INDICATED, WILL RUN 5 1/2" CASING AND ATTEMPT COMPLETION.

CORTEZ DRILLING COMPANY WILL BE THE CONTRACTOR.

\*THIS CASING WILL NOT BE RUN IF WATER IS NOT ENCOUNTERED. IF WATER IS ENCOUNTERED AND PRODUCTION SUBSEQUENTLY ACHIEVED, THIS CASING WILL BE RUN AND CEMENT CIRCULATED PRIOR TO COMPLETION ATTEMPT.

IN ABOVE SPACE DESCRIBE PROPOSED PROGRAM: If proposal is to deepen or plug back, give data on present productive zone and proposed new productive zone. If proposal is to drill or deepen directionally, give pertinent data on subsurface locations and measured and true vertical depths. Give blowout preventer program, if any.

## 24.

SIGNED

Jack L. McClellan

TITLE

UNIT OPERATOR

DATE

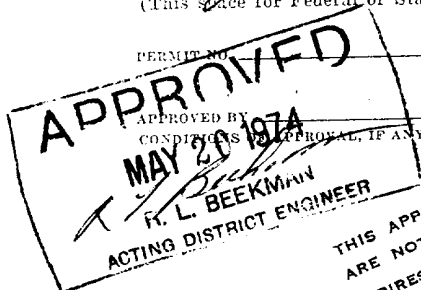
MAY 7, 1974

(This space for Federal or State office use)

PERMIT NO.

APPROVAL DATE

DATE



THIS APPROVAL IS VALID IF OPERATIONS  
ARE NOT COMMENCED WITHIN 3 MONTHS.  
EXPIRES AUG 20 1974

\*See Instructions On Reverse Side

NEW MEXICO OIL CONSERVATION COMMISSION  
WELL LOCATION AND ACREAGE DEDICATION PLAT

Form C-102  
Supersedes C-128  
Effective 1-1-65

All distances must be from the outer boundaries of the Section.

Operator <b>McCLELLAN OIL CORPORATION</b>			Lease <b>SULIMAR QUEEN UNIT TRACT 2</b>		Well No. <b>6</b>
Unit Letter <b>O</b>	Section <b>13</b>	Township <b>15 SOUTH</b>	Range <b>29 EAST</b>	County <b>CHAVES</b>	
Actual Footage Location of Well: <b>990</b> feet from the <b>SOUTH</b> line and <b>1650</b> feet from the <b>EAST</b> line					
Ground Level Elev. <b>990</b>	Producing Formation <b>SULIMAR Queen &amp; J</b>		Pool <b>Sulimar QUEEN</b>		Dedicated Acreage <b>SW<math>\frac{1}{4}</math>, SE<math>\frac{1}{4}</math> 40 Acres</b>

1. Outline the acreage dedicated to the subject well by colored pencil or hatchure marks on the plat below.
2. If more than one lease is dedicated to the well, outline each and identify the ownership thereof (both as to working interest and royalty).
3. If more than one lease of different ownership is dedicated to the well, have the interests of all owners been consolidated by communitization, unitization, force-pooling, etc?

**RECEIVED**

**MAY 13 1974**

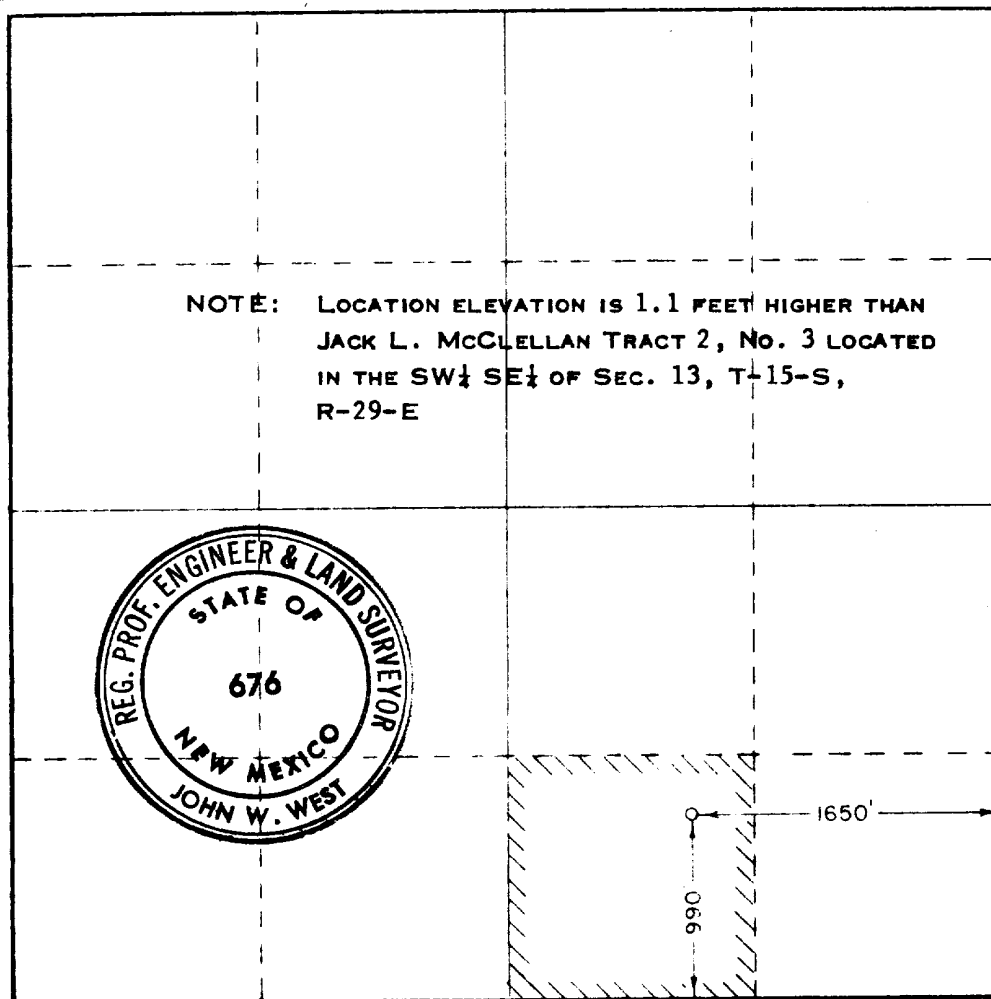
☐ Yes ☐ No If answer is "yes," type of consolidation \_\_\_\_\_

If answer is "no," list the owners and tract descriptions which have actually been consolidated. (Use this form if necessary.) \_\_\_\_\_

No allowable will be assigned to the well until all interests have been consolidated (by communitization, unitization, forced-pooling, or otherwise) or until a non-standard unit, eliminating such interests, has been approved by the Commission.

**O. C. C.**

**ARTESIAL OFFICE**



**CERTIFICATION**

I hereby certify that the information contained herein is true and complete to the best of my knowledge and belief.

Name **John W. West**

Position **AGENT**

Company **McCLELLAN OIL CORP.**

Date **MAY 9, 1974**

I hereby certify that the well location shown on this plat was placed from field notes of actual surveys made by me or under my supervision, and that the same is true and correct to the best of my knowledge and belief.

**RECEIVED**  
**MAY 13 1974**  
**U.S. GEOLOGICAL SURVEY**  
**ARTESIAL, NEW MEXICO**

Date Surveyed **MAY 8, 1974**

Registered Professional Engineer and/or Land Surveyor

**John W. West**

Certificate No. **676**

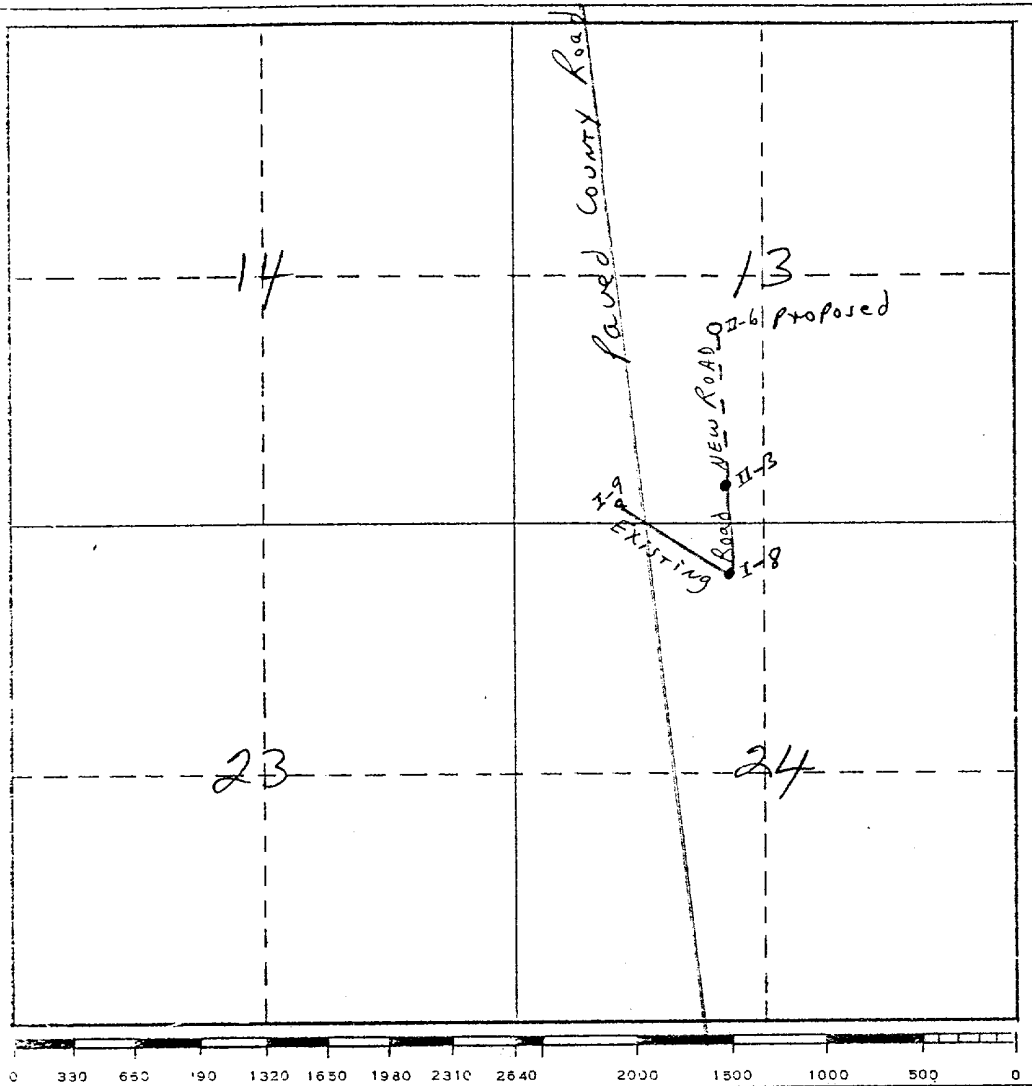
0 330 660 990 1320 1650 1980 2310 2640 2970 3300 3630 3960 4290 4620 4950 5280 5610 5940 6270 6600 6930 7260 7590 7920 8250 8580 8910 9240 9570 9900

JMC

MCLELLAN OIL CORPORATION  
Box 848  
ROSWELL, NEW MEXICO 88201

SULIMAR QUEEN UNIT

TRACT 11-6



**RECEIVED**  
MAY - 8 1974  
U. S. GEOLOGICAL SURVEY  
ARTESIA, NEW MEXICO

PROPOSE TO USE EXISTING ROADS, COUNTY AND OIL FIELD, AND TO CONSTRUCT APPROXIMATELY 660' OF NEW ROAD TO THE LOCATION. NO WATER EXISTS IN THIS AREA AND WILL HAVE TO BE TRUCKED IN TO LOCATION. COMBUSTIBLE MATERIAL WILL BE BURNED, NONCOMBUSTIBLE MATERIAL WILL BE BURIED WITH PIT FILLING.

AFTER COMPLETION OR ABANDONMENT, THE PIT WILL BE FILLED, THE LOCATION CLEANED, AND THE AREA RESTORED, AS MUCH AS POSSIBLE, TO ITS ORIGINAL STATE.

