

UNITED STATES  
DEPARTMENT OF THE INTERIOR  
GEOLOGICAL SURVEYCopy 605 F  
30-005-60312

## APPLICATION FOR PERMIT TO DRILL, DEEPEN, OR PLUG BACK

## 1a. TYPE OF WORK

DRILL ☒DEEPEN ☐PLUG BACK ☐

## b. TYPE OF WELL

OIL  
WELL ☒GAS  
WELL ☐OTHER ☐SINGLE  
ZONE ☐MULTIPLE  
ZONE ☐

## 2. NAME OF OPERATOR

McCLELLAN OIL CORPORATION

## 3. ADDRESS OF OPERATOR

P. O. Box 848, Roswell, New Mexico 88201

## 4. LOCATION OF WELL (Report location clearly and in accordance with any State requirements.)

At surface

660' FSL &amp; 1980' FEL

At proposed prod. zone

## 14. DISTANCE IN MILES AND DIRECTION FROM NEAREST TOWN OR POST OFFICE\*

20 MILES NORTH OF LOCO HILLS

## 15. DISTANCE FROM PROPOSED\*

LOCATION TO NEAREST  
PROPERTY OR LEASE LINE, FT.  
(Also to nearest drlg. unit line, if any)

660'

## 16. NO. OF ACRES IN LEASE

280

17. NO. OF ACRES ASSIGNED  
TO THIS WELL

40

18. DISTANCE FROM PROPOSED LOCATION\*  
TO NEAREST WELL, DRILLING, COMPLETED,  
OR APPLIED FOR, ON THIS LEASE, FT.

## 19. PROPOSED DEPTH

1750'

## 20. ROTARY OR CABLE TOOLS

CABLE TOOLS

## 21. ELEVATIONS (Show whether DF, RT, GR, etc.)

## 22. APPROX. DATE WORK WILL START\*

JUNE 14, 1974

## 23.

## PROPOSED CASING AND CEMENTING PROGRAM

SIZE OF HOLE	SIZE OF CASING	WEIGHT PER FOOT	SETTING DEPTH	QUANTITY OF CEMENT
12"	10-3/4"	28#	30'	1 1/2 YARDS READY MIX-CIRC.
*12"	8-5/8"	24#	250'	100 SX (CIRC)*
8"	5-1/2"	15 1/2#	1750'	100 SX

PROPOSE TO DRILL TO 1750' TO TEST THE QUEEN SAND. IF PRODUCTION IS  
INDICATED, WILL RUN 5 1/2" CASING AND ATTEMPT COMPLETION.

CORTEZ DRILLING COMPANY WILL BE THE CONTRACTOR.

\*THIS CASING WILL NOT BE RUN IF WATER IS NOT ENCOUNTERED. IF NO WATER  
IS ENCOUNTERED AND PRODUCTION SUBSEQUENTLY ACHIEVED, THIS CASING WILL  
BE RUN AND CEMENT CIRCULATED PRIOR TO COMPLETION ATTEMPT.

IN ABOVE SPACE DESCRIBE PROPOSED PROGRAM: If proposal is to deepen or plug back, give data on present productive zone and proposed new productive zone. If proposal is to drill or deepen directionally, give pertinent data on subsurface locations and measured and true vertical depths. Give blowout preventer program, if any.

## 24.

SIGNED

Jack L. McClellan

TITLE

OPERATOR

DATE

JUNE 14, 1974

(This space for Federal or State office use)

PERMIT NO.

APPROVAL DATE

JUN 18 1974

DISTRICT ENGINEER

APPROVED BY

TITLE

DATE

CONDITIONS OF APPROVAL, IF ANY:

\*See Instructions On Reverse Side

**NEW MEXICO OIL CONSERVATION COMMISSION  
WELL LOCATION AND ACREAGE DEDICATION PLAT**

Form C-102  
Supersedes C-128  
Effective 1-1-65

All distances must be from the outer boundaries of the Section

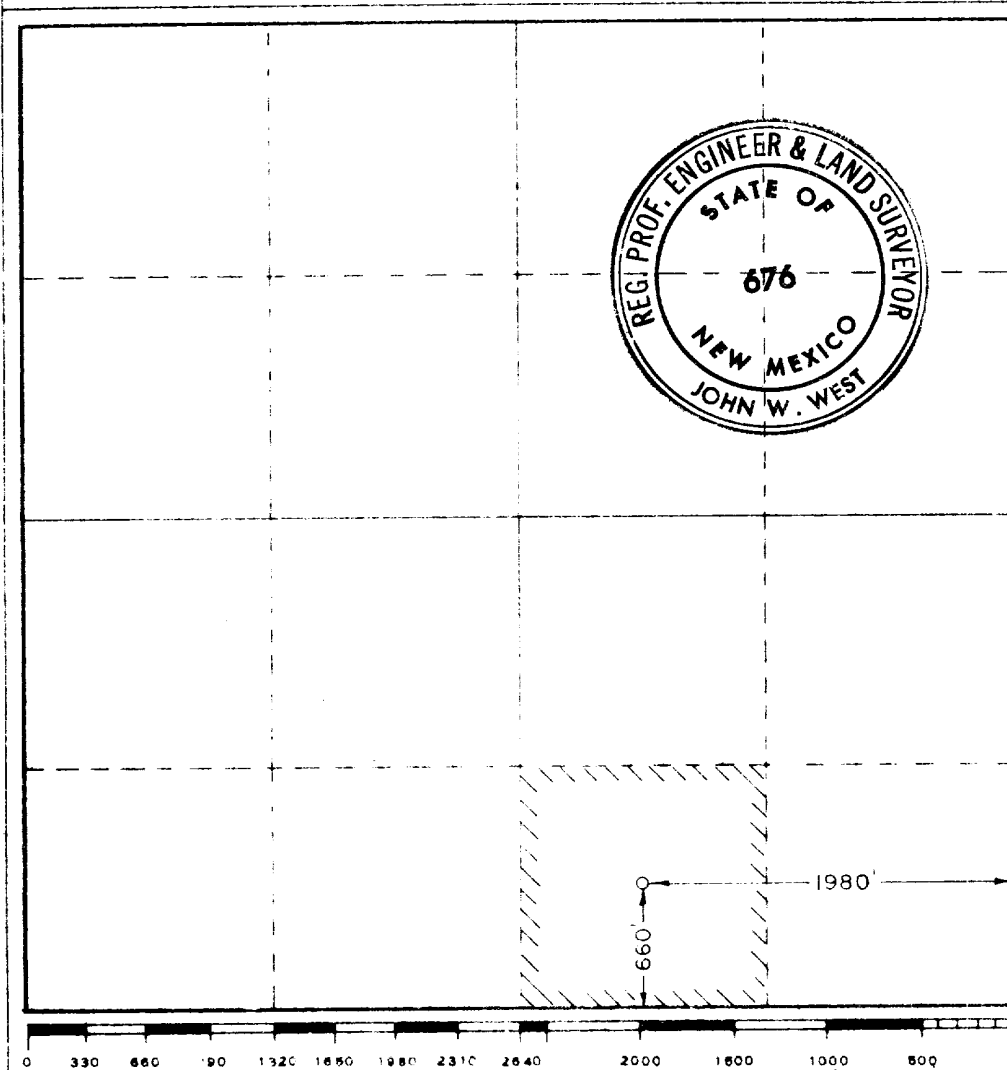
Operator <b>McCLELLAN OIL CORPORATION</b>			Lease <b>PEPPER FEDERAL</b>		Well No. <b>2</b>
Unit Letter <b>O</b>	Section <b>8</b>	Township <b>15 SOUTH</b>	Range <b>29 EAST</b>	County <b>CHAVES</b>	
Actual Footage Location of Well: <b>660</b> feet from the <b>SOUTH</b> line and <b>1980</b> feet from the <b>EAST</b> line					
Ground Level Elev. <b>3793.5</b>	Producing Formation <b>QUEEN</b>		Pool <b>WILDCAT</b>	Dedicated Acreage: <b>SW 1/4 SE 1/4 40</b> Acres	

1. Outline the acreage dedicated to the subject well by colored pencil or hatchure marks on the plat below.
2. If more than one lease is dedicated to the well, outline each and identify the ownership thereof (both as to working interest and royalty).
3. If more than one lease of different ownership is dedicated to the well, have the interests of all owners been consolidated by communitization, unitization, force-pooling, etc?

☐ Yes    ☐ No    If answer is "yes," type of consolidation \_\_\_\_\_

If answer is "no," list the owners and tract descriptions which have actually been consolidated. (Use reverse side of this form if necessary.) \_\_\_\_\_

No allowable will be assigned to the well until all interests have been consolidated (by communitization, unitization, forced-pooling, or otherwise) or until a non-standard unit, eliminating such interests, has been approved by the Commission.



**CERTIFICATION**

I hereby certify that the information contained herein is true and complete to the best of my knowledge and belief.

Name John W. West  
 Position AGENT  
 Company McCLELLAN OIL CORP.  
 Date JUNE 14, 1974

I hereby certify that the well location shown on this plat was plotted from field notes of actual surveys made by me or under my supervision, and that the same is true and correct to the best of my knowledge and belief.

Date Surveyed JUNE 14, 1974  
 Registered Professional Engineer and/or Land Surveyor  
John W. West  
 Certificate No. 676

**RECEIVED**

JUN 17 1977  
U. S. GEOLOGICAL SURVEY  
ARTS & RESEARCH

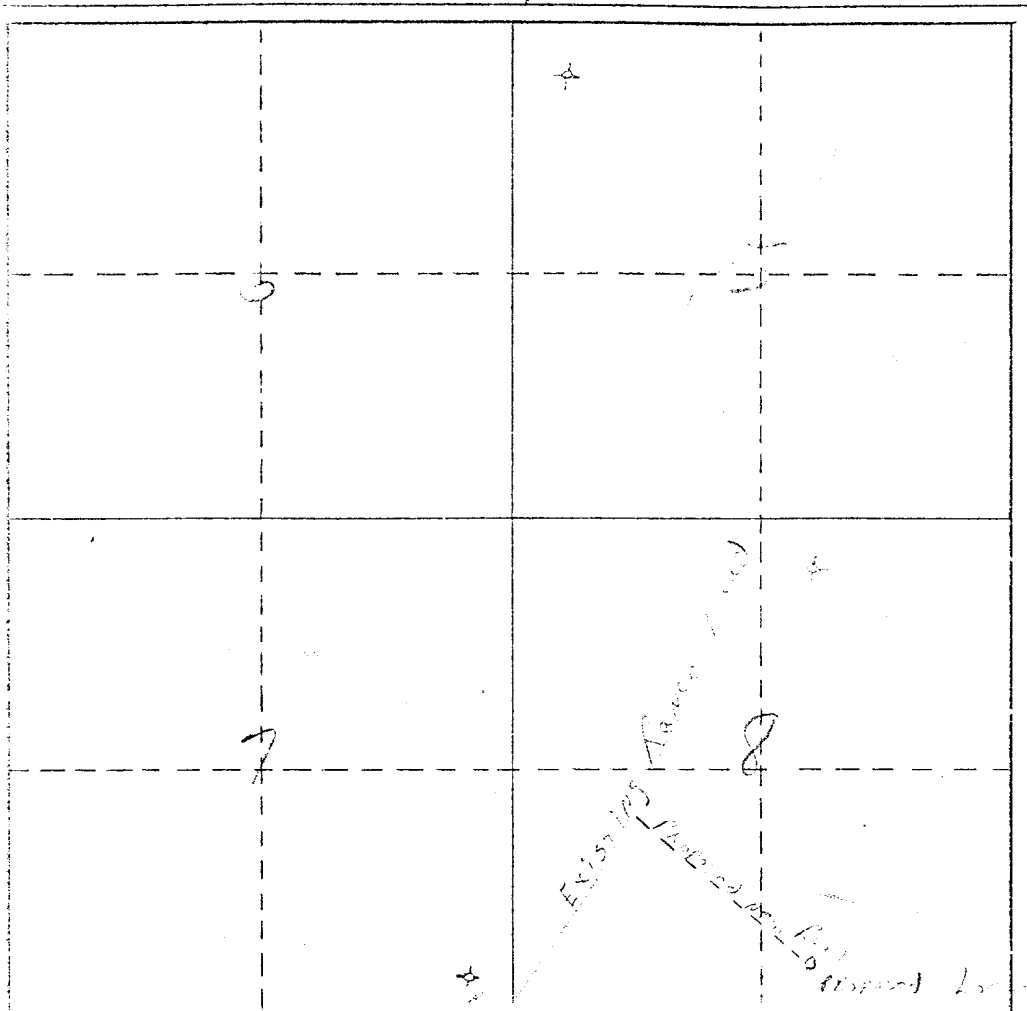
JME

COLELLAN OIL CORPORATION  
Box 848  
ROSWELL, NEW MEXICO 88201

PEPPER FEDERAL No. 2  
660' FSL & 1980' FEL  
SECTION 8-T15S-R30E  
CHAVES COUNTY, N. M.

Highway 31

29-E.



15-S

RECEIVED  
JUN 14 1974  
U.S. GEOLOGICAL SURVEY  
ARTESIA, NEW MEXICO

PROPOSE TO USE EXISTING ROADS, OILFIELD AND RANCH, AND TO CONSTRUCT APPROXIMATELY 1300' OF NEW ROAD TO LOCATION. NO WATER EXISTS IN THIS AREA AND WILL HAVE TO BE TRUCKED IN TO LOCATION. COMBUSTIBLE MATERIAL WILL BE BURNED, NONCOMBUSTIBLE MATERIAL WILL BE BURIED WITH PIT FILLING.

AFTER COMPLETION OR ABANDONMENT, THE PIT WILL BE FILLED, THE LOCATION CLEANED, AND THE AREA RESTORED, AS MUCH AS POSSIBLE, TO IT'S ORIGINAL STATE.

