

UNITED STATES
DEPARTMENT OF THE INTERIOR
GEOLOGICAL SURVEY

30-005-60362

APPLICATION FOR PERMIT TO DRILL, DEEPEN, OR PLUG BACK

1a. TYPE OF WORK

DRILL ☒DEEPEN ☐PLUG BACK ☐

b. TYPE OF WELL

OIL
WELL ☒GAS
WELL ☒

OTHER

SINGLE
ZONE ☐MULTIPLE
ZONE ☐

2. NAME OF OPERATOR

McClellan Oil Corporation

3. ADDRESS OF OPERATOR

Box 848, Roswell, New Mexico 88201

4. LOCATION OF WELL (Report location clearly and in accordance with any State requirements.*)

At surface

At proposed prod. zone 1980' FNL & 660' FEL

14. DISTANCE IN MILES AND DIRECTION FROM NEAREST TOWN OR POST OFFICE*

20 miles North of Loco Hills, New Mexico

15. DISTANCE FROM PROPOSED*

LOCATION TO NEAREST
PROPERTY OR LEASE LINE, FT.
(Also to nearest drlg. unit line, if any)

660'

16. NO. OF ACRES IN LEASE

480

17. NO. OF ACRES ASSIGNED
TO THIS WELL

40

18. DISTANCE FROM PROPOSED LOCATION*

TO NEAREST WELL, DRILLING, COMPLETED,
OR APPLIED FOR, ON THIS LEASE, FT.

2 miles east

19. PROPOSED DEPTH

9900'

20. ROTARY OR CABLE TOOLS

Rotary

21. ELEVATIONS (Show whether DF, RT, GR, etc.)

3737.2 GL

22. APPROX. DATE WORK WILL START*

November 20, 1975

23.

PROPOSED CASING AND CEMENTING PROGRAM

SIZE OF HOLE	SIZE OF CASING	WEIGHT PER FOOT	SETTING DEPTH	QUANTITY OF CEMENT
17 1/2"	12-3/4"		350'	300 SX Circ.
11"	8-5/4"	24 lb.	2600'	200 SX
7-7/8"	5 1/2"	15 1/2 lb. 18 lb.	9900'	300 SX

Propose to drill to top of Miss. formation and test any and all shows of oil or gas encountered in that interval.

RECEIVED

OCT 27 1975

O.C.C.
ARTESIA, OFFICE

RECEIVED

OCT - 6 1975

U.S. GEOLOGICAL SURVEY
ARTESIA, NEW MEXICO

IN ABOVE SPACE DESCRIBE PROPOSED PROGRAM: If proposal is to deepen or plug back, give data on present productive zone and proposed new productive zone. If proposal is to drill or deepen directionally, give pertinent data on subsurface locations and measured and true vertical depths. Give blowout preventer program, if any.

24. SIGNED James M. Cella TITLE Operator DATE October 1, 1975

(This space for Federal or State office use)

PERMIT NO.

DO NOT TO ATTACHED DEEP WELL CONTROL
REQUIREMENTS DATED JUN 1 1973

APPROVED BY

CONDITIONS OF APPROVAL IF ANY:

OCT 27 1975
J. L. BEEKMAN
ACTING DISTRICT ENGINEERTHIS APPROVAL IS RESCINDED IF OPERATIONS
ARE NOT COMMENCED WITHIN 3 MONTHS.
EXPIRES JAN 24 1976

See Instructions On Reverse Side

If completed is a
Perm Gas well,
will have to be
rededicated for
320 ac.

NEW MEXICO OIL CONSERVATION COMMISSION
WELL LOCATION AND ACREAGE DEDICATION PLAT

Form C-102
Supersedes C-128
Effective 1-1-65

All distances must be from the outer boundaries of the Section.

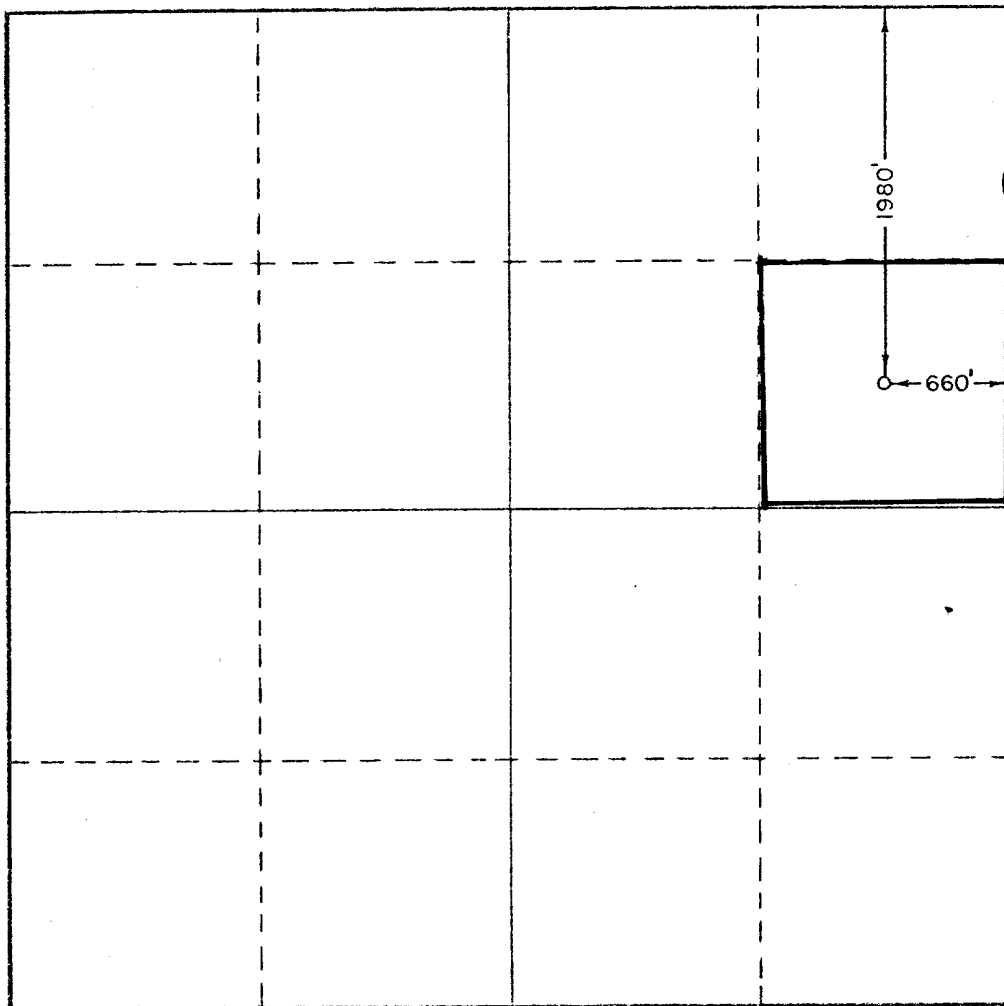
Operator McClellan Oil Corporation			Lease Copper Federal		Well No. 1
Unit Letter H	Section 7	Township 15 South	Range 29 East	County Chaves	
Actual Footage Location of Well: 1980 feet from the North line and 660 feet from the East line					
Ground Level Elev. 3737.2	Producing Formation Wildcat Penn		Pool Wildcat		Dedicated Acreage: 40 Acres

1. Outline the acreage dedicated to the subject well by colored pencil or hachure marks on the plat below.
2. If more than one lease is dedicated to the well, outline each and identify the ownership thereof (both as to working interest and royalty).
3. If more than one lease of different ownership is dedicated to the well, have the interests of all owners been consolidated by communitization, unitization, force-pooling, etc?

☐ Yes ☐ No If answer is "yes," type of consolidation _____

If answer is "no," list the owners and tract descriptions which have actually been consolidated. (Use reverse side of this form if necessary.) _____

No allowable will be assigned to the well until all interests have been consolidated (by communitization, unitization, forced-pooling, or otherwise) or until a non-standard unit, eliminating such interests, has been approved by the Commission.



CERTIFICATION

I hereby certify that the information contained herein is true and complete to the best of my knowledge and belief.

Jack L. McClellan
Name
Jack L. McClellan
Position
President
Company
McClellan Oil Corporation
Date
October 3, 1975

RECEIVED
OCT 6 1975
I hereby certify that the well location shown on this plat was obtained from field notes of geological surveys made by me or under my supervision, and that the same is true and correct to the best of my knowledge and belief.

Date Surveyed
October 2, 1975
Registered Professional Engineer and Land Surveyor
676
NEW MEXICO
Certification
W. W. WEST
676



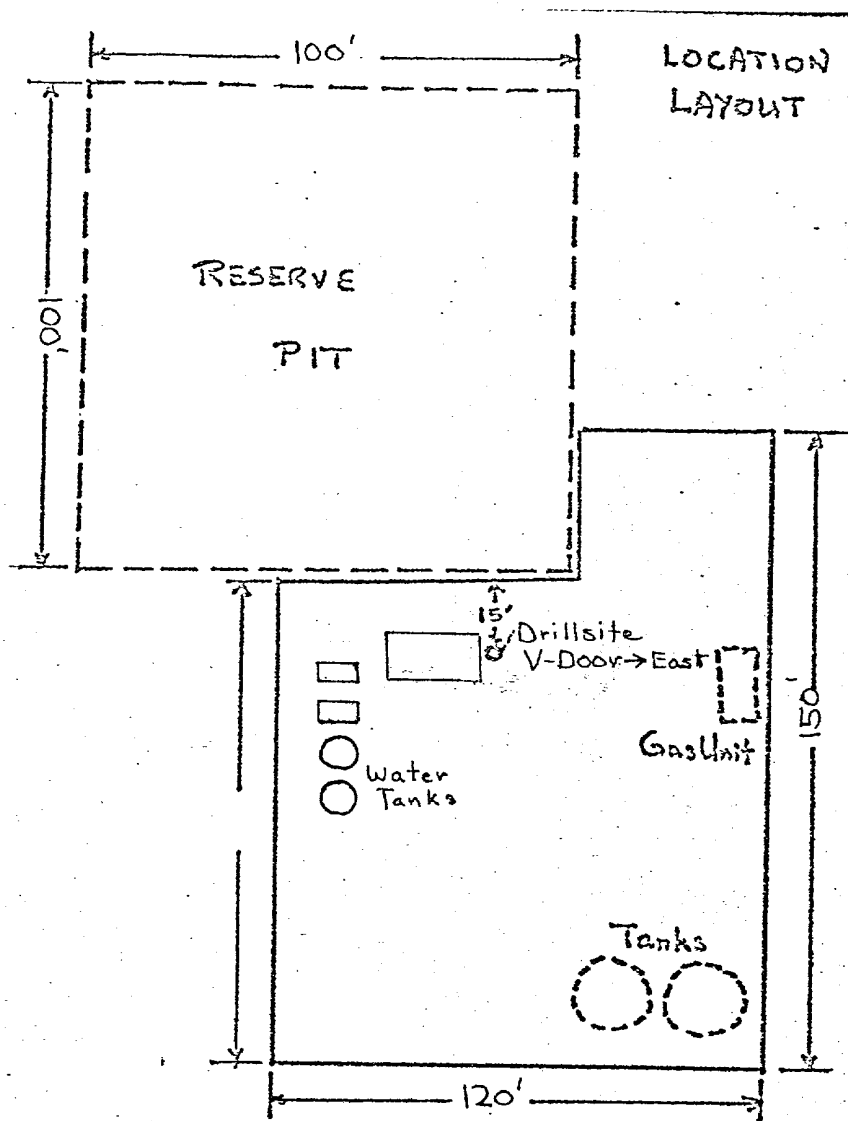
McClellan Oil Corporation

Re: McClellan Oil Corporation
Copper Federal No. 1
1980' FNL 660' FEL
Section 7-T15S-R29E
Chaves County, New Mexico

The following is a Plan of Development for Surface Use required to drill the proposed well attached to this application:

1. State Highway 31 is approximately $2\frac{1}{4}$ miles North of the main County Road bisecting Sections 22-14S-29E and Sections 5 and 8-15S-29E.
2. The proposed road will be the only road into the proposed drillsite.
3. It is possible that other roads will be necessary to the South and West if this test is successful.
4. The production, if achieved, will be pumped into a tank battery located South of the test.
5. Drilling water will have to be trucked in as there is no source of fresh water in this area.
6. After completion of drilling operations all waste will be buried in a separate pit or hauled away.
7. Any produced brine water will be removed by truck in order to prevent contamination of any possible fresh water bearing sands in this area.
8. Casinghead gas, if any, will probably be taken by Phillips Gas Company who is taking gas in Eddy County immediately West of the proposed location.
9. Application for connection will be made immediately upon completion.
10. An attached development plat indicates location layout, rig plan, etc.
11. In the event a dry hole is achieved, all pits will be filled and the location restored, as near as possible, to its original condition.
12. If production is achieved, pad and roads will remain in effect however pits will be filled and restored, as near as possible, to their original condition.
13. A blowout preventer - 10", 900 Series rotary head, 10" 900 Series hydraulic double with pipe and blank rams and adequate choke manifold, will be utilized.

McCLELLAN OIL CORPORATION
 Dos Papalotes Unit
 Chaves County, New Mexico
 Proposed Location Layout



MUD PROGRAM

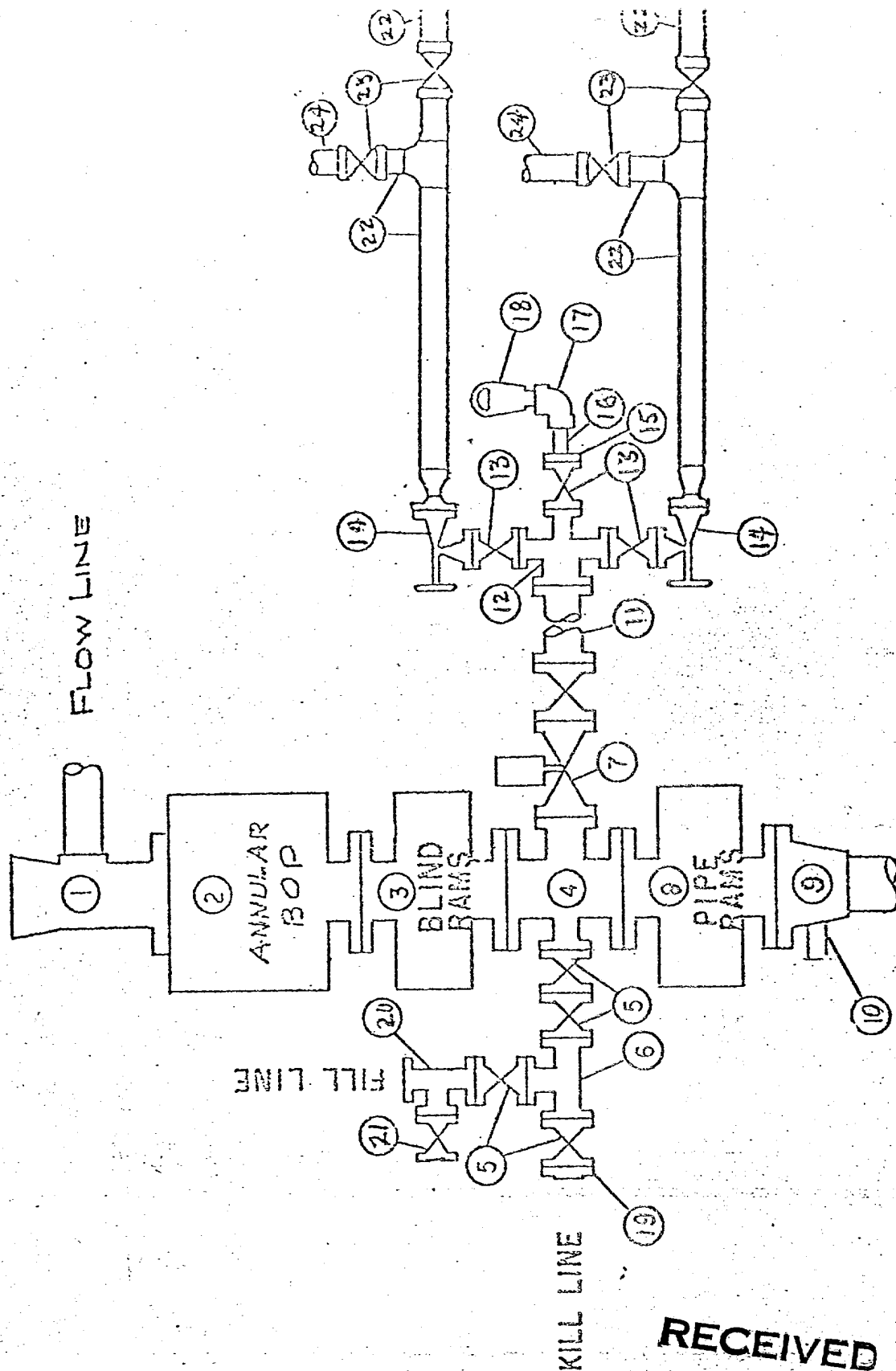
- | | |
|-------------|--|
| 0- 5200' | Clear water and native mud unless lost circulation is encountered on surface hole. If circulation is lost then dry drill to 320' and run surface casing. Then use clear water and native mud from 320' to 5200' or top of Abo. |
| 5200'-8000' | Fresh water mud system. Mud wt. 8.5#-9.04#. Vis. 34-36. WL 100. |
| 8000'-9900' | Chemical mud system. Mud wt. 9.0#-9.5#. Visc. 36-46. WL 10. |

RECEIVED

OCT - 8 1975

U.S. GEOLOGICAL SURVEY
 ARTESIA, NEW MEXICO

BLOWOUT PREVENTER SPECIFICATION



RECEIVED

OCT - 8 1975

U. S. GEOLOGICAL SURVEY
ARTESIA, NEW MEXICO

EQUIPMENT DESCRIPTION

All equipment should be at least 3,000 psi WP or higher unless otherwise specified.

1. Bell nipple.
2. Hydril bag type preventer
3. Ram type pressure operated blowout preventer with blind rams.
4. Flanged spool with one 3-inch and one 2-inch (minimum) outlet.
5. 2-inch (minimum) flanged plug or gate valve.
6. 2-inch by 2-inch by 2-inch (minimum) flanged tee.
7. 3-inch gate valve.
8. Ram type pressure operated blowout preventer with pipe rams.
9. Flanged type casing head with one side outlet.
10. 2-inch threaded (or flanged) plug or gate valve.
Flanged on 5000# WP, threaded on 3000# WP or less.
11. 3-inch flanged spacer spool.
12. 3-inch by 2-inch by 2-inch by 2-inch flanged cross.
13. 2-inch flanged plug or gate valve.
14. 2-inch flanged adjustable choke.
15. 2-inch threaded flange.
16. 2-inch XXH nipple.
17. 2-inch forged steel 90° Ell.
18. Cameron (or equal) threaded pressure gage.
19. Threaded flange.
20. 2-inch flanged tee.
21. 2-inch flanged plug or gate valve.
22. 2½-inch pipe, 300' to pit, anchored.
23. 2½-inch SE valve.
24. 2½-inch line to steel pit or separator.

NOTES:

1. Items 3, 4 and 8 may be replaced with double ram type preventer with side outlets between the rams.
2. The two valves next to the stack on the fill and kill line to be closed unless drill string is being pulled.
3. Kill line is for emergency use only. This connection shall not be used for filling.
4. Replacement pipe rams and blind rams shall be on location at all times.
5. Only type U, LSW and QRC ram type preventers with secondary seals are acceptable for 5000 psi WP and higher BOP stacks.
6. Type E ram-type BOP's with factory modified side outlets may be used on 3000 psi or lower WP BOP stacks.

T-29-E

BM
x 3771

24

19

20

Camp

3675

3744

3812

25

30

29

BM
3861

T-15

GERMAN

3686

3737

3758

Pile of
Dirt

36

31

32

3763

T.
McClan

3713

3790

T-15-S

1

6

5

x 3774

3674

3689

McClan

3735

3755

3781

McClan

12

7

8

3808

Proposed New Road

2400'

McClan