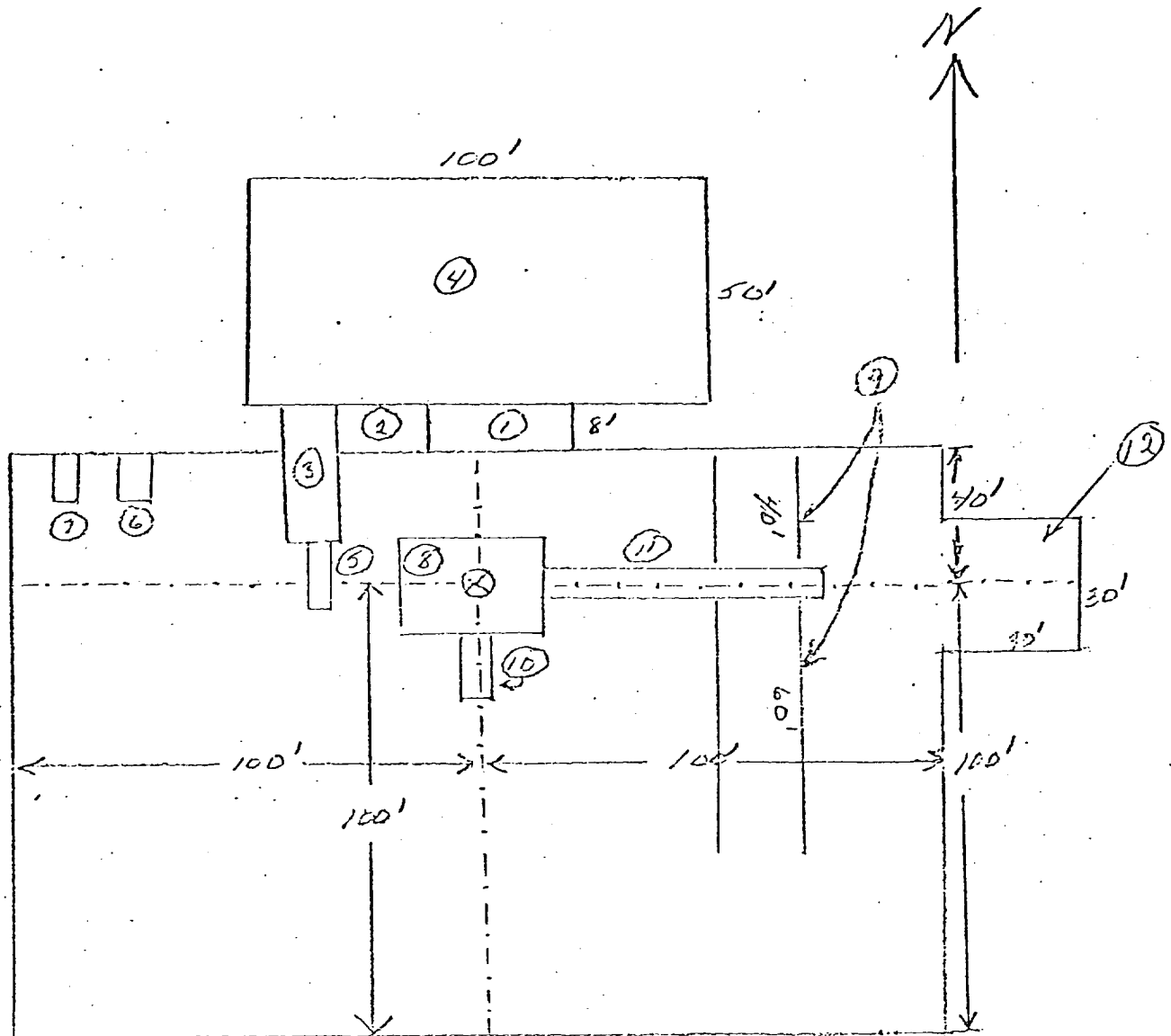


WEK DRILLING CO., INC.
RIG #1 LOCATION & MUD PIT SPECS.



- | | |
|--------------------------|----------------|
| ① Shale Pit 30' x 8' | ⑥ Water Tank |
| ② Mud Pit 20' x 8' | ⑦ Fuel Tank |
| ③ Suction Pit 30' x 8' | ⑧ Rig |
| ④ Reserve Pit 100' x 50' | ⑨ Pipe Racks |
| ⑤ Pump | ⑩ Dog House |
| | ⑪ Cat Walk 60' |
| | ⑫ Stinger |

Schaeffer Type E 10" Series 900 Hydraulic BOP. The waste and debris from this well will be disposed of in a reserve pit and covered up.