

DISTRICT I
1625 N. French Dr., Hobbs, NM 88240

State of New Mexico
Energy, Minerals and Natural Resources Department

Form C-101
Revised March 17, 1999
Instructions on back
Submit to appropriate District Office
State Lease - 6 Copies
Fee Lease - 5 Copies

DISTRICT II
811 South First, Artesia, NM 88210

OIL CONSERVATION DIVISION
PO BOX 2088
Santa Fe, NM 87504-2088

DISTRICT III
1000 Rio Brazos Rd., Aztec, NM 87410

DISTRICT IV
2040 South Pacheco, Santa Fe, NM 87501

☐ AMENDED REPORT

APPLICATION FOR PERMIT TO DRILL, RE-ENTER, DEEPEN, PLUGBACK, OR ADD A ZONE

¹ Operator Name and Address Yates Petroleum Corporation 105 South Fourth Street Artesia, New Mexico 88210		² OGRID Number 025575
		³ API Number 30- 005-60541
⁴ Property Code 28768	⁵ Property Name Buckhorn "AYU" State Com	⁶ Well No. 1

⁷ Surface Location

UL or lot no.	Section	Township	Range	Lot Idn	Feet from the	North/South Line	Feet from the	East/West Line	County
O	18	19S	20E		990	South	1980	East	Chaves

⁸ Proposed Bottom Hole Location If Different From Surface

UL or lot no.	Section	Township	Range	Lot Idn	Feet from the	North/South Line	Feet from the	East/West Line	County
⁹ Proposed Pool 1					¹⁰ Proposed Pool 2				

¹¹ Work Type Code E	¹² Well Type Code G	¹³ Cable/Rotary R	¹⁴ Lease Type Code S	¹⁵ Ground Level Elevation 4724.2'
¹⁶ Multiple No	¹⁷ Proposed Depth 6,936'	¹⁸ Formation Montoya	¹⁹ Contractor Not Determined	²⁰ Spud Date ASAP

²¹ Proposed Casing and Cement Program

Hole Size	Casing Size	Casing weight/feet	Setting Depth	Sacks of Cement	Estimated TOC
17 1/2"	13 3/8	48#	174'-in place	225 sx	Surface w/readymix
11"	8 5/8"	24#	1,760'-inplace	2120 sx	Surface
7 7/8"	4 1/2"	11.60#	3785'-6207'in pla	280 sx	TOC-5400'
7 7/8"	4 1/2"	11.60#	0-3785'-tie-in	400 sx	TOC-1500' +/-
3 7/8"	2 7/8" liner	6.5#	5700'-6936'	100 sx	TOC-5700'

²² Describe the proposed program. If this application is to DEEPEN or PLUG BACK give the data on the present productive zone and proposed new productive zone. Describe the blowout prevention program, if any. Use additional sheets if necessary.

See Attached Sheet



²³ I hereby certify that the information given above is true and complete to the best of my knowledge and belief.

Signature:

Pat Perez

Printed name:

Pat Perez

Title:

Regulatory Agent

Date:

7-31-2001

Phone:

(505) 748-1471

Approved by:

OIL CONSERVATION DIVISION
ORIGINAL SIGNED BY TIM W. GUM
DISTRICT II SUPERVISOR

Title:

Approval Date:

AUG 10 2001

Expiration Date:

AUG 10 2002

Conditions of Approval

Attached ☐

YATES PETROLEUM CORPORATION

Buckhorn "AYU" State Com #1 Re-entry

990' FSL & 1980' FEL

Section 18-T19S-R20E

Chaves County, New Mexico

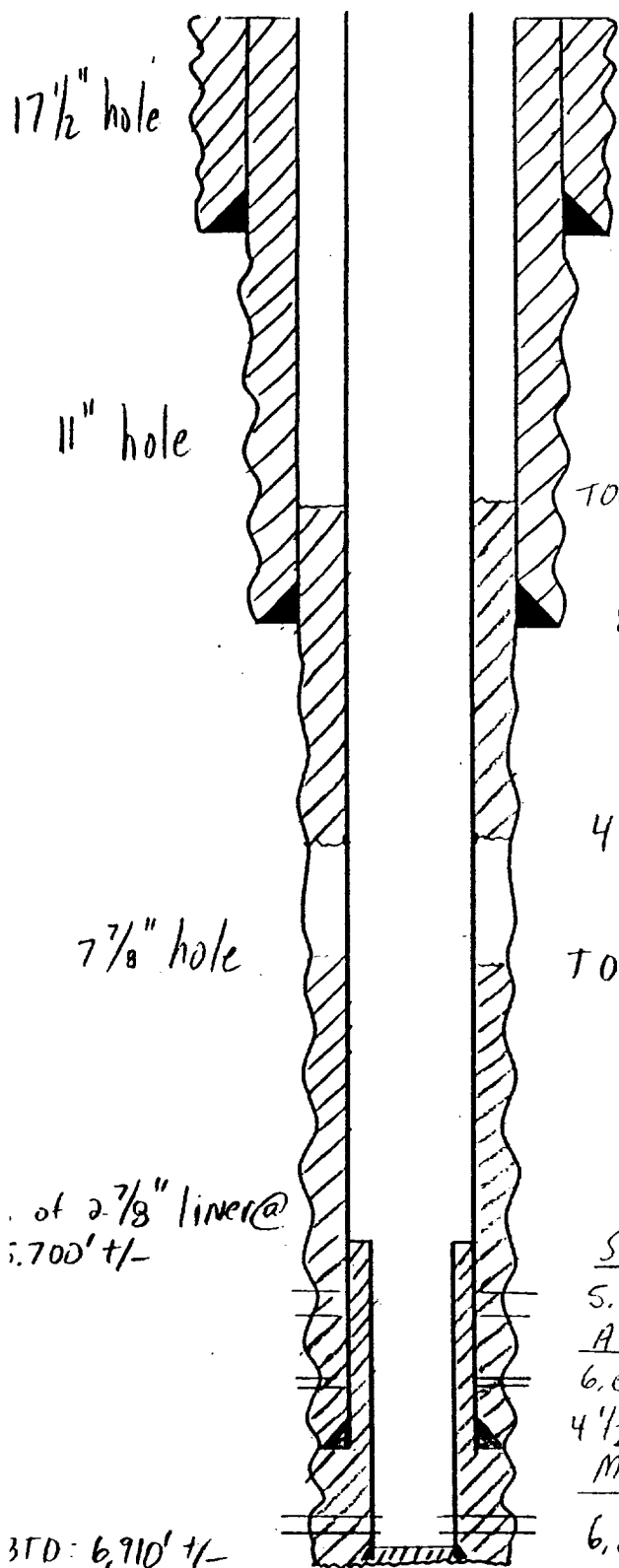
Lease #VA-2181

Drilling Plans: Yates Petroleum Corporation plans to re-enter this well bore that was originally drilled by Phoenix Resources Company as their Buckhorn Canyon #1 and plugged it 1/8/87. A pulling unit and a reverse unit will be used to drill out the cement plugs in the 8 5/8" casing and the 7 7/8" open hole to the top of the 4 1/2" casing stub at 3,785'. The 4 1/2" casing will be repaired at 3785' all the plugs in the 4 1/2" casing will be cleaned out to 6,207'. Then the 7 7/8" open hole below the casing will be cleaned out to the original TD of 6,936'. A 2 7/8" liner will be set at TD with the top of the liner being 5700'. The liner will be cemented with enough cement to bring the top of the cement to about 5700' (top of the liner). The mud program to be used will be 9.2-9.5 ppg brine water with a 55-70 cp viscosity. A 3,000# BOPE will be installed on the 9 5/8" casing.

The well will be completed using a pulling unit. The well will be completed and tested in the Montoya zone in the interval from 6,843" to 6.904'.

WELLNAME: Buckhorn Canyon #1 FIELD: Wildcat
 LOCATION: 990' FSL & 1980' FEL, Sec 18, T19S, R20E, CHAVES
 L: 4,724' ZERO: _____ AGL: _____ KB: _____
 PUD DATE: _____ COMPLETION DATE: _____
 COMMENTS: P+H 1/8/87

CASING PROGRAM	
SIZE/WT/GR/CONN	DEPTH SET
13 3/8", 48.0 #/FT, H-40, STK	174'
8 5/8", 24.0 #/FT, J-55, STK	1,760'
4 1/2", 11.60 #/FT, K-55, N-80 LTK	6,207'



13 3/8" @ 174' CMTD w/ 225 SACKS, CMT did not circulate, filled annulus w/ 4 YARDS ready mix

After

TOC: 1,500' +/-

8 5/8" @ 1,760' CMTD w/ 1,200 SACKS, TOC - 980', 1" w/ 920 SACKS to surface

4 1/2" repaired @ 3,785', CMTD w/ 400 +/- SACKS

TOC: 5400' temp survey

out of 2 7/8" liner @ 6,700' +/-

STRAWN

5,796' - 5,913', 19 holes, shot 3/11/79 & 3/16/79

Atoka

6,054' - 6,058' & 6,070' - 6,073' 4 holes shot 3/9/79

4 1/2" @ 6,207' CMTD w/ 280 SACKS

Montoya

6,843' - 6,904' w/ 2 jspt

3FD: 6,910' +/-

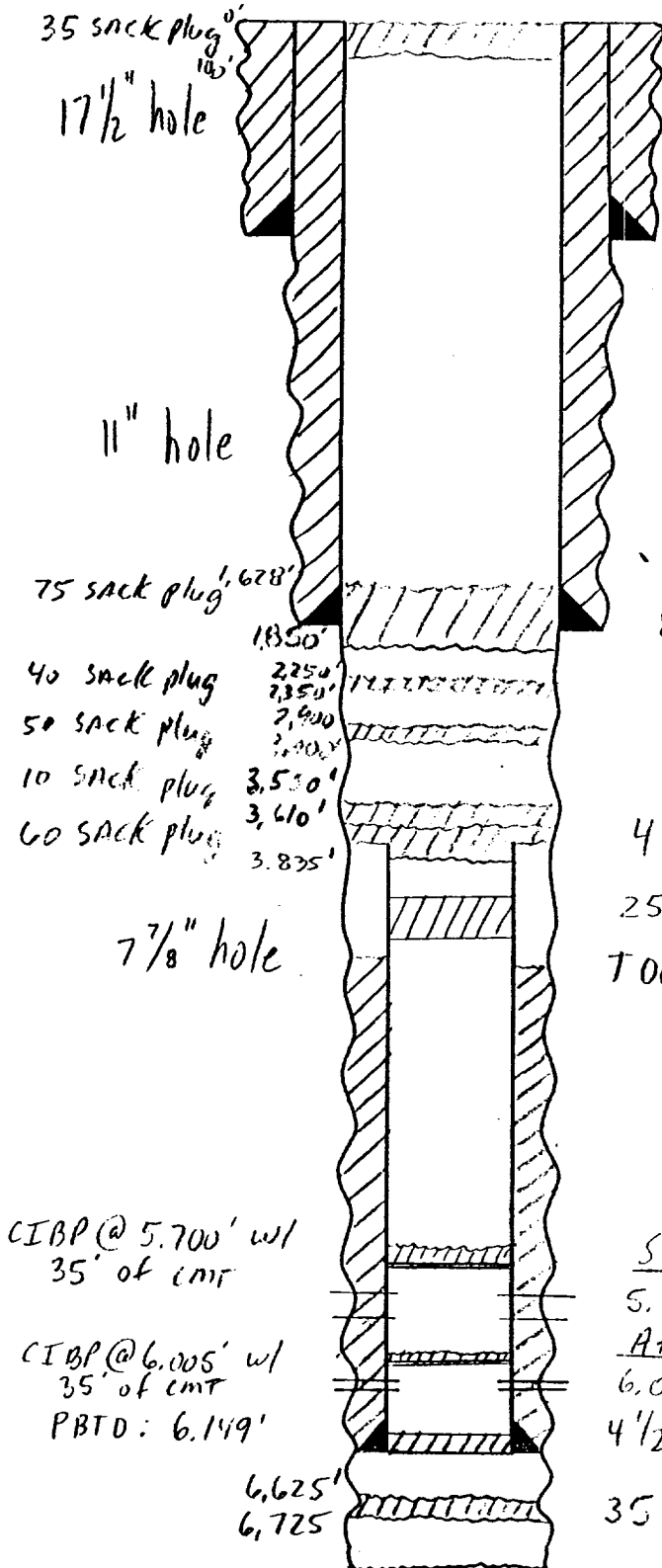
TD: 10,211'

- SKETCH NOT TO SCALE -

DATE: 4/12/01 JWP

WELLNAME: Buckhorn Canyon #1 FIELD: Wildcat
 LOCATION: 990' FSL & 1980' FEL, Sec 18, T19S, R20E, Chaves
 GL: 4,724' ZERO: _____ AGL: _____ KB: _____
 SPUD DATE: _____ COMPLETION DATE: _____
 COMMENTS: P&H 1/8/87

CASING PROGRAM	
SIZE/WT/GR/CONN	DEPTH SET
13 3/8", 48.0 #/ft, H-40, STC	174'
8 5/8", 24.0 #/ft, J-55, STC	1,760'
4 1/2", 11.60 #/ft, K-55, N-80 LTC	6,207'



13 3/8" @ 174' CMTD w/ 225 SACKS, CMT did not circulate, filled annulus w/ 4 YARDS ready mix, before

8 5/8" @ 1,760' CMTD w/ 1,200 SACKS, TOC - 980', 1" w/ 920 SACKS to SURFACE

4 1/2" cut at 3,785'

25 sack plug fl 4,615' - 5,000'
 TOC: 5400' temp survey

CIBP @ 5,700' w/ 35' of CMT

CIBP @ 6,005' w/ 35' of CMT
 PBD: 6,149'

Strawn

5,796' - 5,913', 19 holes, shot 3/11/79 & 3/16/79

AtoKa

6,054' - 6,058' & 6,070' - 6,073' 4 holes shot 3/9/79

4 1/2" @ 6,207' CMTD w/ 280 SACKS

35 sack plug

TD 6,936'

- SKETCH NOT TO SCALE -

DATE: 4/12/01 JUP

DISTRICT IV
2040 South Pacheco, Santa Fe, NM 87506

Energy, Minerals and Natural Resources Department

Fee Loans - 3 Copies

Santa Fe, New Mexico 87504-2088

☐ **AMENDED REPORT**

API Number 30-005-60541	Pool Code	Pool Name
Property Code	Property Name Buckhorn "AYU" State Com	Well Number 1
OGED No. 025575	Operator Name Yates Petroleum Corporation	Elevation 4724.2'

UL or lot No.	Section	Township	Range	Lot Idn	Feet from the	North/South line	Feet from the	East/West line	County
0	18	19S	20E		990	South	1980	East	Chaves

UL or lot No.	Section	Township	Range	Lot Idn	Feet from the	North/South line	Feet from the	East/West line	County
Dedicated Acres 320	Joint or Infill	Consolidation Code		Order No.					

	<p>OPERATOR CERTIFICATION</p> <p>I hereby certify the information contained herein is true and complete to the best of my knowledge and belief.</p> <p><u>Pat Perez</u> Signature</p> <p><u>Pat Perez</u> Printed Name</p> <p><u>Regulatory Agent</u> Title</p> <p><u>7-31-2001</u> Date</p> <hr/> <p>SURVEYOR CERTIFICATION</p> <p>I hereby certify that the well location shown on this plat was plotted from field notes of actual surveys made by me or under my supervision, and that the same is true and correct to the best of my belief.</p> <p>Referr to original plat</p> <p>Date Surveyed _____</p> <p>Signature & Seal of Professional Surveyor _____</p> <hr/> <p>Certificate No. Herschel L. Jones RLS 3640</p> <p align="center">GENERAL SURVEYING COMPANY</p>
--	-------------------------------------------------------------------------------------------------------------------------------------------------------------------------------------------------------------------------------------------------------------------------------------------------------------------------------------------------------------------------------------------------------------------------------------------------------------------------------------------------------------------------------------------------------------------------------------------------------------------------------------------------------------------------------------------------------------------------------------------------------------------------------------------------------------------------

NEW MEXICO OIL CONSERVATION COMMISSION
WELL LOCATION AND ACREAGE DEDICATION PLAT

Form C-1
Superseded C-128
Effective 1-1-68

All distances must be from the outer boundaries of the Section

Phoenix Resources			Lease Buckhorn Canyon		Well No. 1
Section 18	Township 19 South	Range 20 East	County Chaves		
Acreage Location of Well:					
990	feet from the South line and	1980	feet from the East line		
4724.2	Producing Formation Morrow	Well Wildcat	Dedicated Acreage:		320

- 1 Outline the acreage dedicated to the subject well by colored pencil or hatchure marks on the plat below.
- 2 If more than one lease is dedicated to the well, outline each and identify the ownership thereof (both as to working interest and royalty).
- 3 If more than one lease of different ownership is dedicated to the well, have the interests of all owners been consolidated by communitization, unitization, force-pooling, etc?

☐ Yes ☒ No If answer is "yes," type of consolidation To be communitized if productive

If answer is "no," list the owners and tract descriptions which have actually been consolidated (Use reverse side of this form if necessary.)

No allowable will be assigned to the well until all interests have been consolidated (by communitization, unitization, forced-pooling, or otherwise) or until a non-standard unit, eliminating such interests, has been approved by the Commission.

CERTIFICATION

I hereby certify that the information contained herein is true and complete to the best of my knowledge and belief

John W. West
Signature

Agent

Company

Phoenix Resources Co.

Date

January 3, 1979

I hereby certify that the well location shown on this plat was plotted from field notes of actual surveys made by me or under my supervision and that the same is true and correct to the best of my knowledge and belief

Date Surveyed

Dec. 29, 1978

Registered Professional Engineer and Land Surveyor

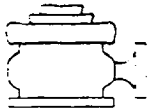
John W. West
Signature

Certificate No. John W. West

676

Ronald J. Eidson 3239

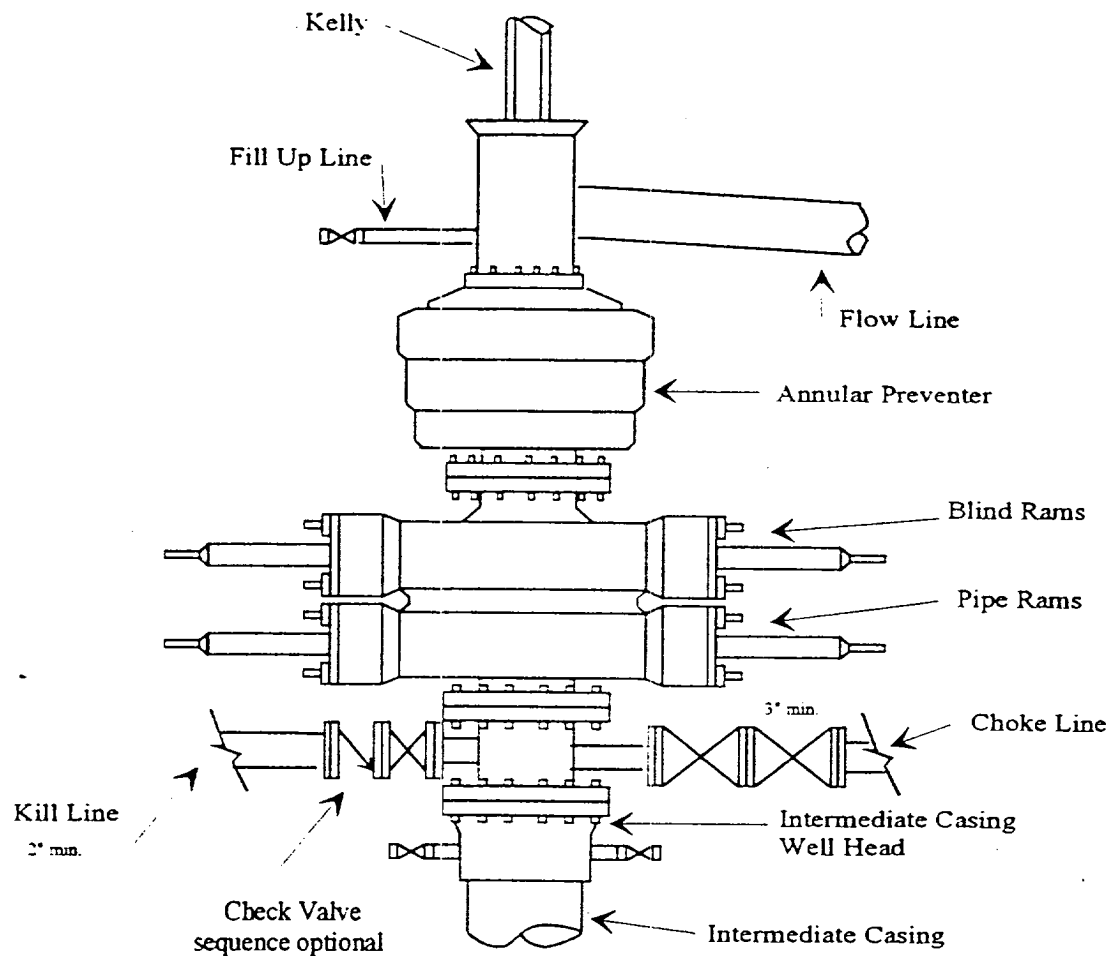
330 660 990 1320 1650 1980 2310 2640 2970 3300 3630 3960 4290 4620 4950 5280 5610 5940 6270 6600



Yates Petroleum Corporation

BOP-3

Typical 3,000 psi Pressure System Schematic Annular with Double Ram Preventer Stack



Typical 3,000 psi choke manifold assembly with at least these minimum features

